



VELVET

Milliken™



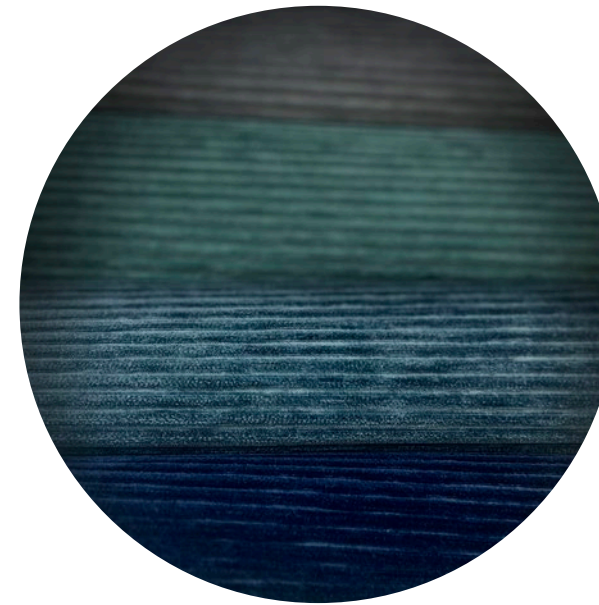
Velvet

Indulge your senses in the ultimate plushness with our irresistible Velvet collection, comprising two captivating designs: Crushed Velvet and Velvet Stripe. This luxurious and sophisticated collection is carefully crafted to elevate any space, emanating a fusion of timeless elegance, alluring textures, and a vibrant colour palette that effortlessly complements your desired ambience.

The Crushed Velvet design captures the attention with its intriguing and lavish texture, creating an illusion of depth and an indulgent tactile experience.

Meanwhile, the Velvet Stripe design offers a refined aesthetic, showcasing an elegant pattern of subtle stripes that exude sophistication.

Both designs are meticulously curated to offer a 12-colour tonal palette, providing a wide range of options from soft neutral gradients and mélanges for those seeking delicate and refined aesthetics, to vibrant and bold hues that evoke drama and flair.



“

Experience the epitome of sumptuous luxury as you step onto our Velvet collection. With its ability to transform any space into a haven of opulence and sophistication, it invites you to immerse yourself in sheer indulgence.

”

Two patterns to discover.

Crushed Velvet

Be captivated by the allure of the Crushed Velvet design, featuring a mesmerizing, irregular pattern of nap that creates a sense of depth and dimension to your flooring. The interplay of light and shadow adds a visually intriguing element that adds a touch of opulence.

Crushed Velvet in Matt Silver (CV6-154) and Midnight Magic (CV249-107) | Ashlar (Vertical) Installation

Left to Right: Velvet Stripe in Matt Silver (VS6-154) and Majestic Mauve (VS181-38) | Herringbone Installation

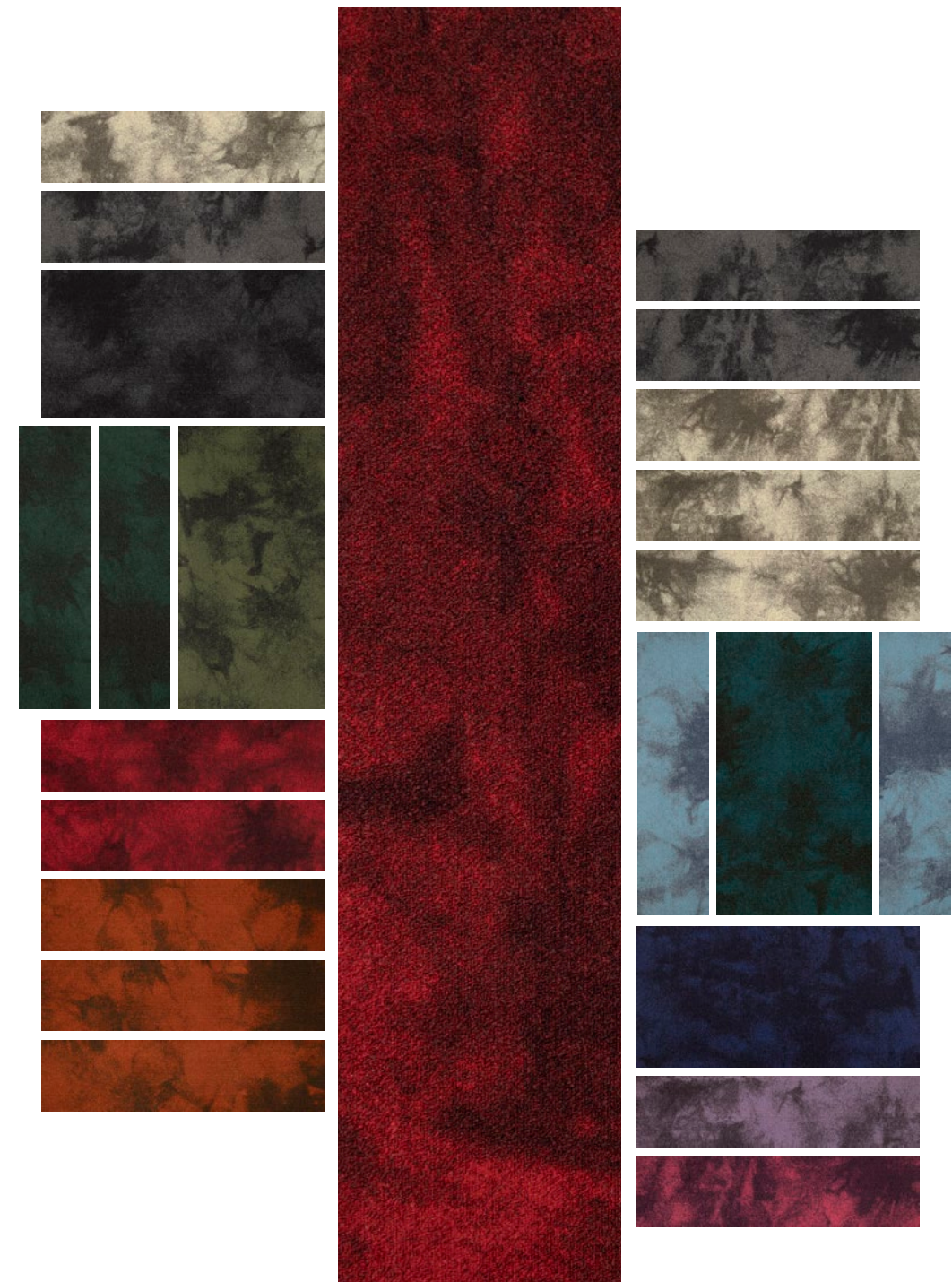
Velvet Stripe

Velvet Stripe offers a refined and classic look with its subtle tone-on-tone stripe pattern. The delicate stripes traverse the carpet tiles, adding a touch of intricacy and style to any interior.



Crushed Velvet

Available in twelve colours across two coordinating patterns. For those seeking a flooring option with a unique luster and eye-catching texture, the Crushed Velvet design is a perfect choice.





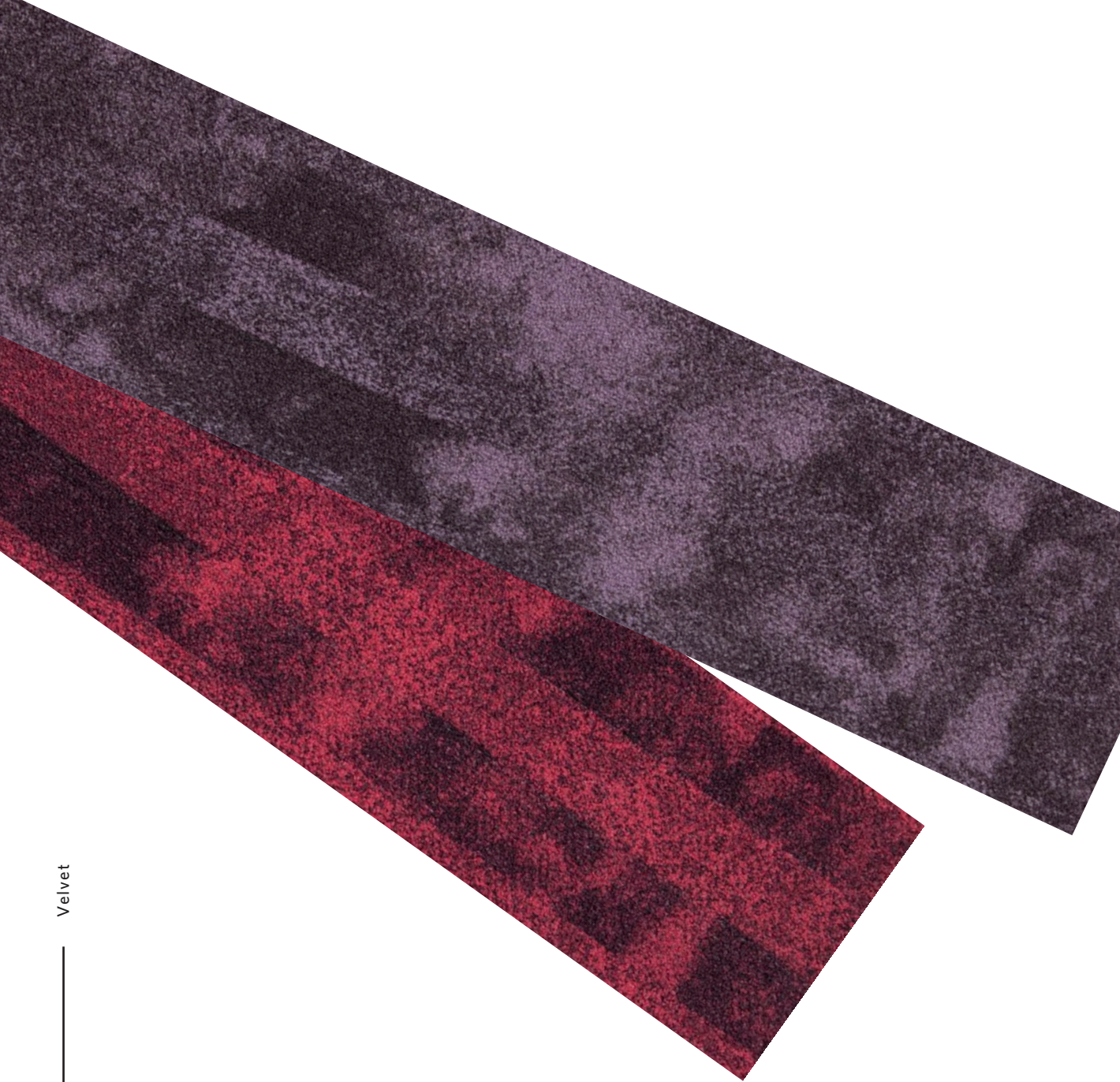
Crushed Velvet in Smoke Green | CV45-23 | Ashlar (Vertical) Installation



Top: Crushed Velvet in Tangerine | CV33-98 | Herringbone Installation
Bottom: Crushed Velvet in Matt Silver (CV6-154) and Sovereign Shadow (CV154-27) | Ashlar (Vertical) Installation



Top to Bottom: Crushed Velvet in Midnight Magic (CV249-107) and Matt Silver (CV6-154) | Ashlar (Vertical) Installation



Velvet Stripe

Whether you prefer a more traditional or contemporary aesthetic, Velvet Stripe effortlessly complements Crushed Velvet and various design schemes.



Velvet Stripe in Aqua Crystal | VS159-126 | Herringbone Installation



Velvet Stripe in Emerald | VS274-46 | Ashlar (Vertical) Installation



Velvet Stripe in Porcelain Silk | VS217-259 | Herringbone Installation



Left to Right: Velvet Stripe in Matt Silver (VS6-154),
Porcelain Silk (VS217-259) and Sovereign Shadow (VS154-27) | Ashlar (Vertical) Installation



CREATING A BETTER WORLD

Milliken supports the Property Industry Foundation

Milliken is a proud partner of the Property Industry Foundation, an organisation devoted to alleviating the problem of youth homelessness. The Foundation builds homes for homeless youth and provides ongoing support for homes where young people can rebuild their lives.

Homelessness is one of the most severe forms of disadvantage and social exclusion that any young person can experience. Youth homelessness affects 44,000 young Australians every night and understanding the scale of this issue, we were compelled to get involved and help in the great work the foundation is doing.

The Velvet collection is part of the 'Product Pathway'. The 'Product Pathway' is a unique fundraising model created by Milliken for the Property Industry Foundation where a contribution from every dollar of sales is donated to the foundation to build homes for homeless youth. The aim of the product pathway is to provide a regular and sustainable fundraising stream and with your help, we can keep assisting the Property Industry Foundation in tackling the issue of youth homelessness.

The Foundation's mission is to make a tangible difference to the serious and persistent problem of youth homelessness by partnering with respected charities to build safe environments and support charity managed initiatives focused on education, employment and well-being.



www.pif.com.au

Milliken™

www.millikenfloors.com.au

Colourway

Crushed Velvet

Velvet Stripe



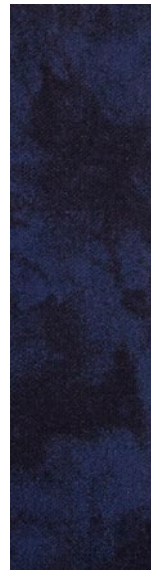
CV154-27
SOVEREIGN
SHADOW



CV6-154
MATT SILVER



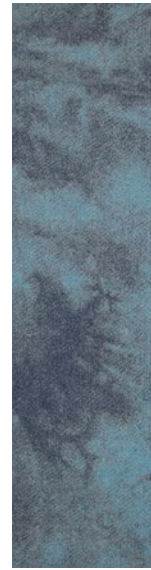
CV217-259
PORCELAIN
SILK-BEIGE



CV249-107
MIDNIGHT
MAGIC



CV229-133
TOURMALINE



CV159-126
AQUA
CRYSTAL



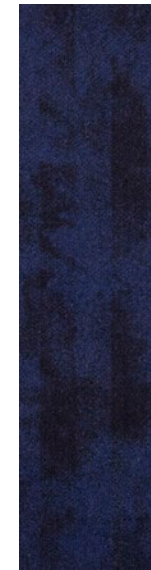
VS154-27
SOVEREIGN
SHADOW



VS6-154
MATT SILVER



VS217-259
PORCELAIN
SILK-BEIGE



VS249-107
MIDNIGHT
MAGIC



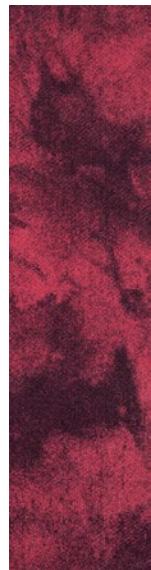
VS229-133
TOURMALINE



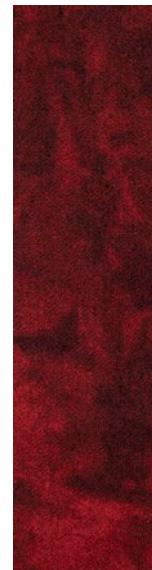
VS159-126
AQUA
CRYSTAL



CV181-38
MAJESTIC
MAUVE



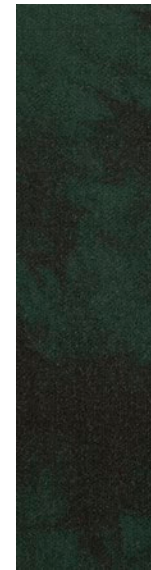
CV168-82
RASPBERRY
ROUGE



CV169-60
GARNET



CV33-98
TANGERINE



CV274-46
EMERALD



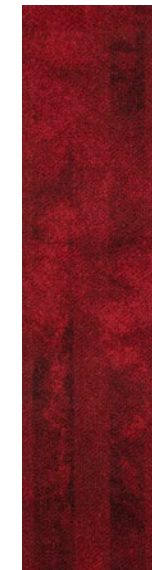
CV45-23
SMOKE GREEN



VS181-38
MAJESTIC
MAUVE



VS168-82
RASPBERRY
ROUGE



VS169-60
GARNET



VS33-98
TANGERINE



VS274-46
EMERALD



VS45-23
SMOKE GREEN



**BOUNDLESS
POSSIBILITIES
AT YOUR FEET.**

WWW.MILLIKENFLOORS.COM.AU



 **CONCEPT**

 **DESIGN**

 **REFINE**

 **PRODUCE**

Milliken[™]



Milliken

COUTURE

 **CONCEPT**

Begin your custom carpet journey with your own design or simply recolour an existing Milliken pattern.

 **DESIGN**

Collaborate with our design team to create flowing patterns, complex effects or evolving colour palettes.

 **REFINE**

Fine tune your preferred design to ensure it meets all the design, technical and quality requirements for your project, then receive a full size sample for review.

 **PRODUCE**

Our innovative Millitron[®] manufacturing technology guarantees quick production and despatch within 3 weeks of order placement.

Mood boards created around a family of grey Milliken coordinating colours.

Mood boards and creativity go hand in hand. With 12 colourways in each design, it's easy to be inspired to coordinate with other Milliken Collections.

For our full range of Milliken collections visit: millikenfloors.com.au



1. Circular Relationships | Fossil Point CRF180-13-215 Albatross

2. Metro Park Stone | Arts Avenue ASA153 Logan

3. Arctic Survey | Shackleton SHK119-27 Black Ice

4. Metro Park Stone | Porcelain POR48 Cream

5. Metro Park Wood | Beech BEH21-121 Grove

6. Colour Connect | Linx LNX21 Linen Weave

7. Mixed Formations: Made of Wood Gunnison | GUN251-219-217 Cream

8. Whale Song | Beluga BEL108-204 | Briny

9. Whale Song | Beluga BEL209-152 Ice Cap

10. Colour Connect | Linx LNX152 Tin Lid

11. Colour Connect | Skor SKO5 Charred Rock

12. Velvet | Crushed Velvet CV154-27 Sovereign Shadow

13. Comfortable Concrete | Laid Bare LDB154-180 Powder

14. Beyond Chroma | Chroma CMA108 Anchor

15. Mixed Formations: Made of Stone Dust Crystals | DSC250 Dusk

16. Mixed Formations: Made of Stone Dust Crystals | DSC220 Shell

17. Whale Song | Humpback HUM119-106 Maritime

18. Velvet | Crushed Velvet CV6-154 Matt Silver

19. Metro Park Stone | Tangible TGB6 Dawn

20. Mixed Formations: Made of Stone Pure Slab | PSL217 Taupe

21. Arctic Survey | Isotherm IST108-13 Avalanche

22. Karona 3 | Eclipse ECL133 Solar

23. Mixed Formations: Made of Stone Close Fragments | CLF13-209 Silver

24. Mixed Formations: Made of Stone Close Fragments | CLF209-215 Beige

Mood boards created around a family of blue Milliken coordinating colours.

Mood boards and creativity go hand in hand. With 12 colourways in each design, it's easy to be inspired to coordinate with other Milliken Collections.

For our full range of Milliken collections visit: millikenfloors.com.au

- | | | | |
|--|--|--|--|
| 1. Colour Connect Skor
SKO140-159 Sea Wash | 7. Velvet Crushed Velvet
CV6-154 Matt Silver | 13. Metro Park Wood Beech
BEH21-121 Grove | 19. Metro Park Wood Golden Oak
GOK22 Amber |
| 2. Colour Connect Skor
SKO159 Bower Blue | 8. Velvet Crushed Velvet
CV154-27 Sovereign Shadow | 14. Metro Park Stone Porcelain
POR48 Cream | 20. Ripple
RIP13-144 Pebble |
| 3. Colour Connect Linx
LNX140-126 Tropics Blue | 9. Karona 3 Eclipse
ECL125 Winter Storm | 15. Metro Park Wood Charter Oak
COK144 Smoke | 21. Beyond Chroma Chroma
CMA196-198 Peacock |
| 4. Distinct Forms Cement
CEM79-152 Symmetry Grey | 10. City Nights City Nights
CNI159-182 Steel | 16. Karona 3 Eclipse
ECL123 Freeze | 22. Metro Park Wood Eucalyptus Saligna
ECS114 Wombat |
| 5. Mixed Formations: Made of Stone
Pure Slab PSL250 Cloud | 11. Beyond Chroma Chroma
CMA157 Sea Blue | 17. Velvet Velvet Stripe
VS217-256 Porcelain Silk | 23. Colour Compositions
CCM125 Calcite |
| 6. Metro Park Stone Tangible
TGB250 Twilight | 12. Metro Park Wood Eucalyptus Saligna
ECS122 Koala | 18. Beyond Chroma Chroma
CMA161 Teal | 24. Comfortable Concrete Urban Poetry
UPY154-180-140 Powder Sky |



Mood boards created around a family of green Milliken coordinating colours.

Mood boards and creativity go hand in hand. With 12 colourways in each design, it's easy to be inspired to coordinate with other Milliken Collections.

For our full range of Milliken collections visit: millikenfloors.com.au

- | | | | |
|--|--|--|--|
| 1. Beyond Chroma Chroma
CMA162-101 Peppermint | 7. Colour Connect Skor
SKO5 Charred Rock | 13. Velvet Velvet Stripe
VS45-23 Smoke Green | 19. Comfortable Concrete Urban Drama
UDR133-13-202 Slate Parrot |
| 2. Beyond Chroma Chroma
CMA173 Mink | 8. Beyond Chroma Chroma
CMA230-125 Herbal | 14. Velvet Crushed Velvet
CV45-23 Smoke Green | 20. Metro Park Wood Kokutan
KKT121 Bokken |
| 3. Velvet Crushed Velvet
CV274-46 Emerald | 9. Metro Park Stone Arts Avenue
ASA209 Fairmount | 15. Metro Park Stone Chalkboard
CKB5 Meta | 21. Metro Park Wood Hickory
HCR22-20 Parchment |
| 4. Beyond Chroma Chroma
CMA174 Carbon | 10. Metro Park Stone Arts Avenue
ASA180 Boathouse | 16. Circular Relationships Fossil Point
CRF154-133-215 Oyster | 22. Metro Park Stone Polished Concrete
PLC67 Polish |
| 5. Colour Compositions
CCM152 Micro | 11. Metro Park Stone Arts Avenue
ASA153 Logan | 17. Velvet Crushed Velvet
CV6-154 Matt Silver | 23. Colour Compositions
CCM6 Intrusion |
| 6. Colour Connect Linx
LNX103 Jade Lake | 12. Circular Relationships Rock Grain
CRR180-13-215 Albatross | 18. Ripple
RIP13-144 Pebble | 24. Ripple
RIP100-94 River Bed |



Mood boards created around a family of red Milliken coordinating colours.

Mood boards and creativity go hand in hand. With 12 colourways in each design, it's easy to be inspired to coordinate with other Milliken Collections.

For our full range of Milliken collections visit: millikenfloors.com.au

- | | | | |
|--|--|--|--|
| 1. Velvet Velvet Stripe
VS168-82 Raspberry Rouge | 7. Beyond Chroma Chroma
CMA33 Sapphire | 13. Ripple
RIP13-6 Current | 19. Metro Park Wood Heritage
HTG208 Pride |
| 2. Velvet Velvet Stripe
VS154-27 Sovereign Shadow | 8. Ripple
RIP100-94 River Bed | 14. Colour Compositions
CCM151 Salvation | 20. Velvet Crushed Velvet
CV33-98 Tangerine |
| 3. Colour Connect Linx
LNX181 Pale Plum | 9. Mixed Formations: Made of Wood
Gunnison GUN251-219-217 Cream | 15. Beyond Chroma Chroma
CMA253 Rhinestone | 21. Metro Park Wood Golden Oak
GOK22 Amber |
| 4. Beyond Chroma Chroma
CMA168 Scarlet | 10. Mixed Formations: Made of Wood
Golden Oak GDK211 Tan | 16. Metro Park Stone Polished Concrete
PLC144 Scoring | 22. Metro Park Wood Heritage
HTG218 Honor |
| 5. Beyond Chroma Chroma
CMA169 Garnet | 11. Karona 3 Lunar
LUN133-109 Flame | 17. Velvet Velvet Stripe
VS181-38 Majestic Mauve | 23. Metro Park Wood Eucalyptus Saligna
ECS122 Koala |
| 6. Live Circuit Current
CUR218 Amp | 12. Colour Connect Skor
SKO149 Lavender Spread | 18. Velvet Velvet Stripe
VS169-60 Garnet | 24. Colour Compositions
CCM109 Garnet |



It takes humans to protect humanity.

Make changes to end climate change.
Design a better future.

M/PACT™
CARBON NEUTRAL PROGRAM

CLIMATE CHANGE IS ONE OF THE GREATEST THREATS FACING HUMANITY, AND WE ARE ALL RESPONSIBLE.

That's why Milliken Floor Covering launched the **M/PACT™** carbon neutral program. Today, our carpet, LVT and entrance flooring tiles are carbon neutral everywhere in the world.

M/PACT carbon neutral products offset the raw materials and manufacturing carbon footprint* by using 3rd party Verified Carbon Standard Credits that support renewable energy and carbon reduction technologies to help fight climate change. When you choose M/PACT products, you can be sure your choice is carbon neutral.

SCAN TO LEARN MORE ABOUT OUR CARBON NEUTRAL PROGRAM
M/PACT™

M/PACT™
CARBON NEUTRAL PROGRAM

Investment

Today we invest through renewable energy credits, verified carbon offsets, and installing solar power at our Sydney manufacturing facility. We also continue to invest in more efficient manufacturing technologies and in local supply chains.

Materials

We believe material health is essential to enable circularity. The use of materials that don't contain harmful chemicals provides a critical pathway to end-of-life product recycling. Our carpet, LVT and entrance flooring tiles are recyclable.

Dematerialisation

We continue to support the advancement of a circular economy - one that uses less new raw materials and creates less waste. For example, we have created a portfolio of carpet tiles that use less raw material, reducing embodied carbon. We will continue to challenge ourselves and our supply chains to extend innovation in new technologies for dematerialisation.

Manufacturing

We leverage our global manufacturing and local supply chains to minimise carbon emissions. More efficient manufacturing and distribution not only reduces our global carbon footprint, it also has a direct positive impact on the communities we call home.

Wellness

Climate change directly impacts human health and wellness. Pollution. Natural disasters. Droughts. As a founding member of the Well Living Lab and a Well Portfolio Member, we aspire to design products that enhance well-being and quality of life of indoor spaces.

We will continue to do more to lower our carbon footprint.

The M/PACT™ program is long-term, because the fight to stop climate change will be a long one. As a global manufacturing company, we set 2025 goals that align with the United Nations Sustainable Development Goals. We push ourselves to meet our targets on Planet, Product, and People, including a 25% reduction in indexed greenhouse emissions by 2025. These 2025 goals are a benchmark for us to achieve more, faster. We encourage you to specify our carbon neutral products for all of your projects to ensure the climate change journey continues.

Together, we can make a positive **M/PACT™** on the world for generations.

* As calculated and verified scope A1-3 GWP through a ISO14025/ISO14040 compliant LCA and published in third party EPDs.

Milliken

Milliken



Self-sanitising Carpet

Integrated Infection Control



MGUARD+ treatment kills 99% of the SARS-CoV-2 virus within 2 hours of contact with Milliken PrintWorks™ carpet tiles.

MGUARD+ treatment kills 99% of *S. aureus*, *E. coli*, *K. pneumoniae* in 24 hours as per AATCC 174-2.

Duration of protection varies with use.

Powered by HealthGuard®.

Only available in Australia and New Zealand.

Declare.



WellBAC®

Milliken WellBAC® open cell foam cushion provides superior durability, appearance retention and cushioning.



Up to 24% greater underfoot comfort for enhanced ergonomics whilst standing.



Up to 50% improved acoustics for quieter, more productive spaces.



Industry leading moisture management with non-reactive backings to enhance the installation process.



3rd party Verified Red-List Free products for occupant and installer well-being.



Enhanced Indoor Air Quality (Low VOC) for improved occupant and installer well-being.

FACE FABRIC

Patterns and structures made up of nylon yarns with our state of the art tufting technology.

PRIMARY BACKING

The face yarn is tufted through a high quality non-woven textile. The structure of the textile holds the yarn in place acting as the primary backing.

PRECOAT

The precoat layer locks the tufted yarns in the primary backing to ensure good tuft bind strength between the yarns and the backing.

FIBERGLASS

A high quality fiberglass layer is embedded in the polyolefin compound to ensure dimensional stability of the tile.

SECONDARY BACKING

Proprietary Polyolefin compound layer formulated by Milliken R&D scientists to create a durable and stable tile. Our formulation does not contain PVC or plasticizers.

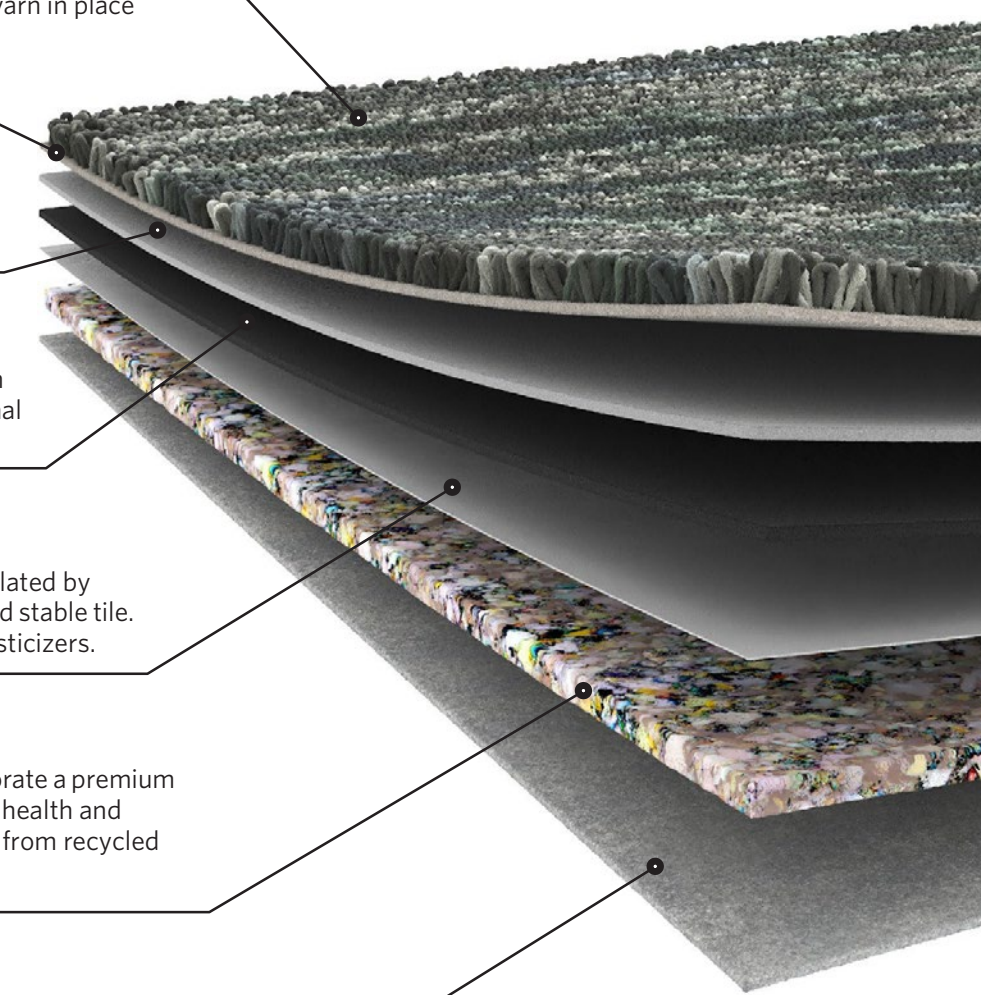
PREMIUM CUSHION

WellBAC® Comfort and Comfort Plus incorporate a premium cushion layer, designed to provide additional health and wellness benefits. Milliken's cushion is made from recycled polyurethane foam.

FELT BACK

A protective non-woven textile layer provides a breathable non-reactive finish. It enhances health and wellness.

Milliken's standard cushion backing system — offering enhanced underfoot comfort, acoustic and wear performance.





VELVET

Crushed Velvet | Velvet Stripe

SPECIFICATION



When you choose M/PACT™ products, you can be sure your choice is carbon neutral. M/PACT™ carbon neutral products offset the raw materials and manufacturing carbon footprint* by using 3rd party Verified Carbon Standard Credits that support renewable energy and carbon reduction technologies to help fight climate change. *as calculated and verified through a ISO14025/ISO14040 compliant LCA and published in third party EPD.

Standard Backing

Cushion Backing
WellBAC® Comfort (PVC FREE) (Non-Reactive Cushion Backing)

Acoustic Value

Noise Reduction Coefficient - NRC ≥ 0.25
Impact Sound Pressure Level - Ln,w ≤ 47dB

Concrete Slab Moisture Mitigation

Site-Related Solutions (SRS). Milliken Cushion backed tile + Non-Reactive Standard adhesive means installation 60 days after a new concrete pour, fully warranted no moisture testing required. Refer millikenfloors.com.au

Antiviral | Antibacterial

MGUARD+ Antiviral and Antibacterial Treatment. Further information refer to millikenfloors.com.au

Construction	Tufted, Textured Loop	Lightfastness (AATCC 16E)	≥ 4.0 at 80 Hours
Tile Size	25cm x 1m	Static Electricity	≤ 3.5KV
Yarn Type	Milliken Certified 100% Nylon	(AATCC-134) 20% R.H., 70°F	
Stain Resist Soil Release	StainSmart®	Indoor Air Quality	≤ 0.5mg/m³ (GLP0793)
Dye Method	PrintWorks™	CRI Green Label Plus™	
Gauge	1/10	VOC	Pass (ISO 10580:2010)
Stitches Per Inch	14.4	ACCS Grading	CMD 2*, REHD15*, Suitable for stairs
Tufts	144/in² (2,230/100cm²)	Environmental	ECS Grading - Level 4 (Certificate No. 20145) Declare - 3rd Party Verified RED LIST FREE Cradle to Cradle - Silver Carbon Neutral Environmental Product Declaration (EPD) Health Product Declaration (HPD)
Recyclable	100%		
Nominal Total Thickness	8.4mm		
Nominal Pile Thickness	2.8mm		
Nominal Total Weight	90.3 oz/yd² (3,062 g/m²)		
Flammability (Radiant Panel Test)	CHF/CRF = 6.3kW/m², Smoke value = 136%.min		

Recommended Installation Method(s)

Ashlar (Vertical) | Herringbone

Recommended Area of Use

Commercial Extra Heavy Duty

Warranties

15-year Wear Warranty
15-year Dimensional Stability Warranty
15-year Anti-Static Warranty
15-year Castor Chair Wear Warranty



Alliance
Founding
Member



Milliken

Velvet Stripe in Sovereign Shadow (VS154-27)
and Raspberry Rouge (VS168-82)
Ashlar (Vertical) Installation

Australia:
Toll Free: 1800 668 372
New Zealand:
Toll Free: 0800 668 372
www.millikenfloors.com.au
(Australia & New Zealand)

This WellBAC® cushion-back carpet tile product is covered by one or more patents, published applications and/or patents pending. Specifications are subject to normal manufacturing tolerances and may be changed without prior notice. Copies of actual test results are available upon request.