

**OUT OF THE SHADOWS**

Shadowbox / Silhouette / Splice

Milliken™



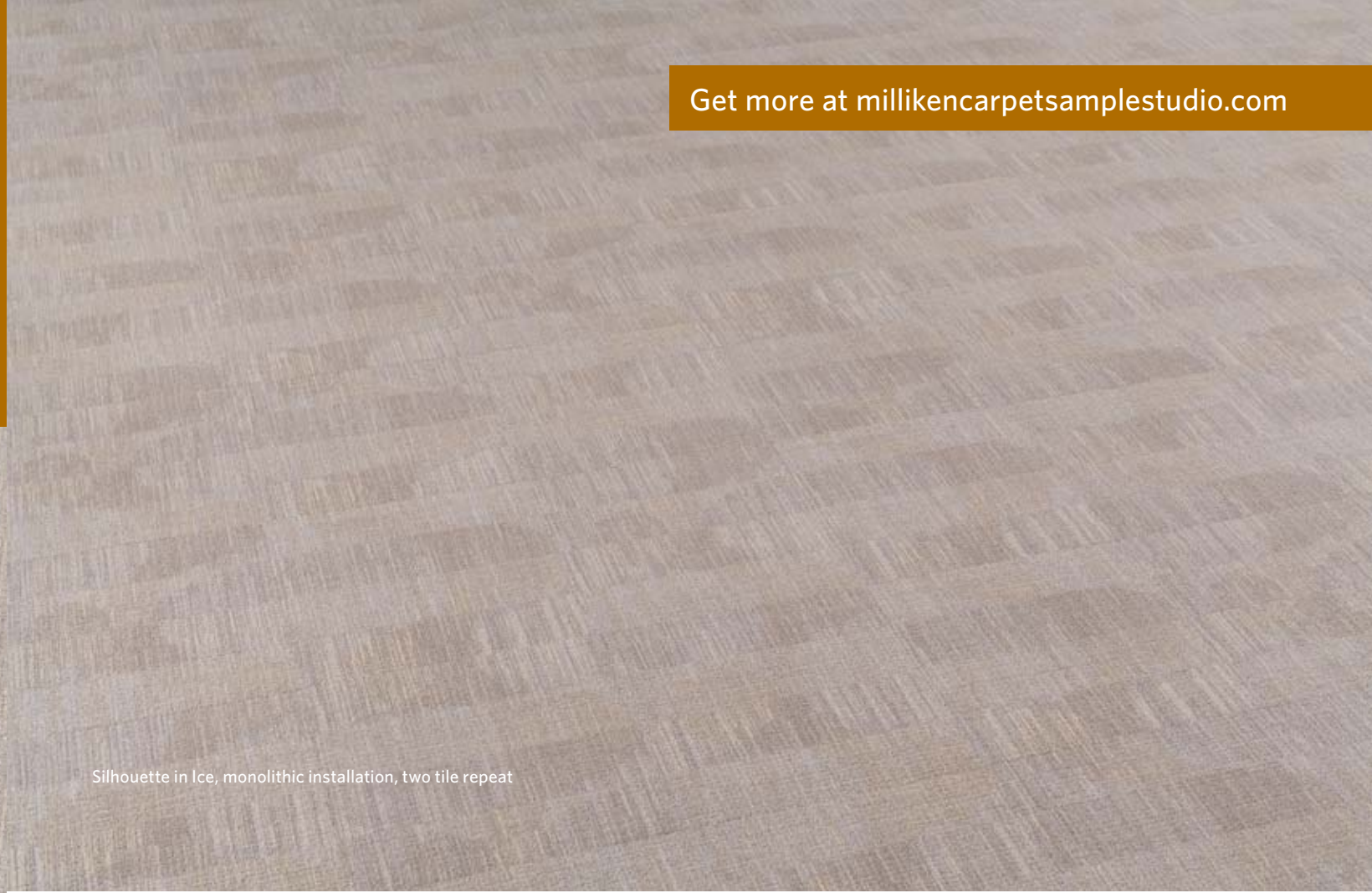
**INSPIRED. INSPIRING.**

In the space of a moment's reflection, one has the chance to see below the surface—to discover new depths, untold stories, and underlying inflections. Out of the Shadows gives us a chance to reflect, to look more closely—if just for a second—and see the once-hidden stories rise from their depths.

Get more at [millikencarpetsamplestudio.com](http://millikencarpetsamplestudio.com)



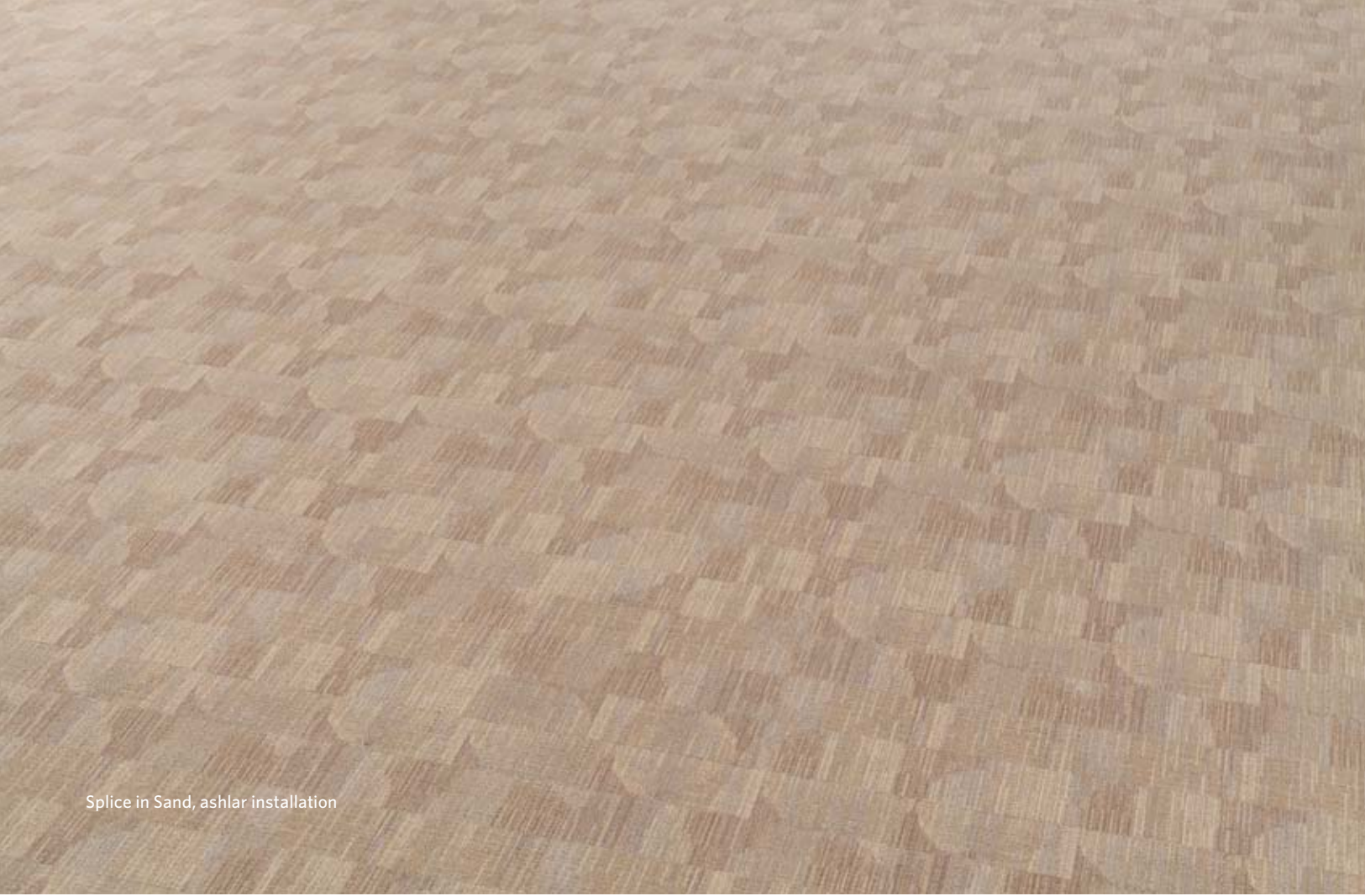
Shadowbox in Ice, ashlar installation



Silhouette in Ice, monolithic installation, two tile repeat



Splice in Ice, ashlar installation



Splice in Sand, ashlar installation



Silhouette in Sand, ashlar installation



Shadowbox in sand, ashlar installation. Silhouette in sand, monolithic installation, two tile repeat.

Shadowbox in Atomic, ashlar installation

Silhouette in Atomic, monolithic installation, two tile repeat

Splice in Atomic, ashlar installation

Silhouette in School Bus, ashlar installation

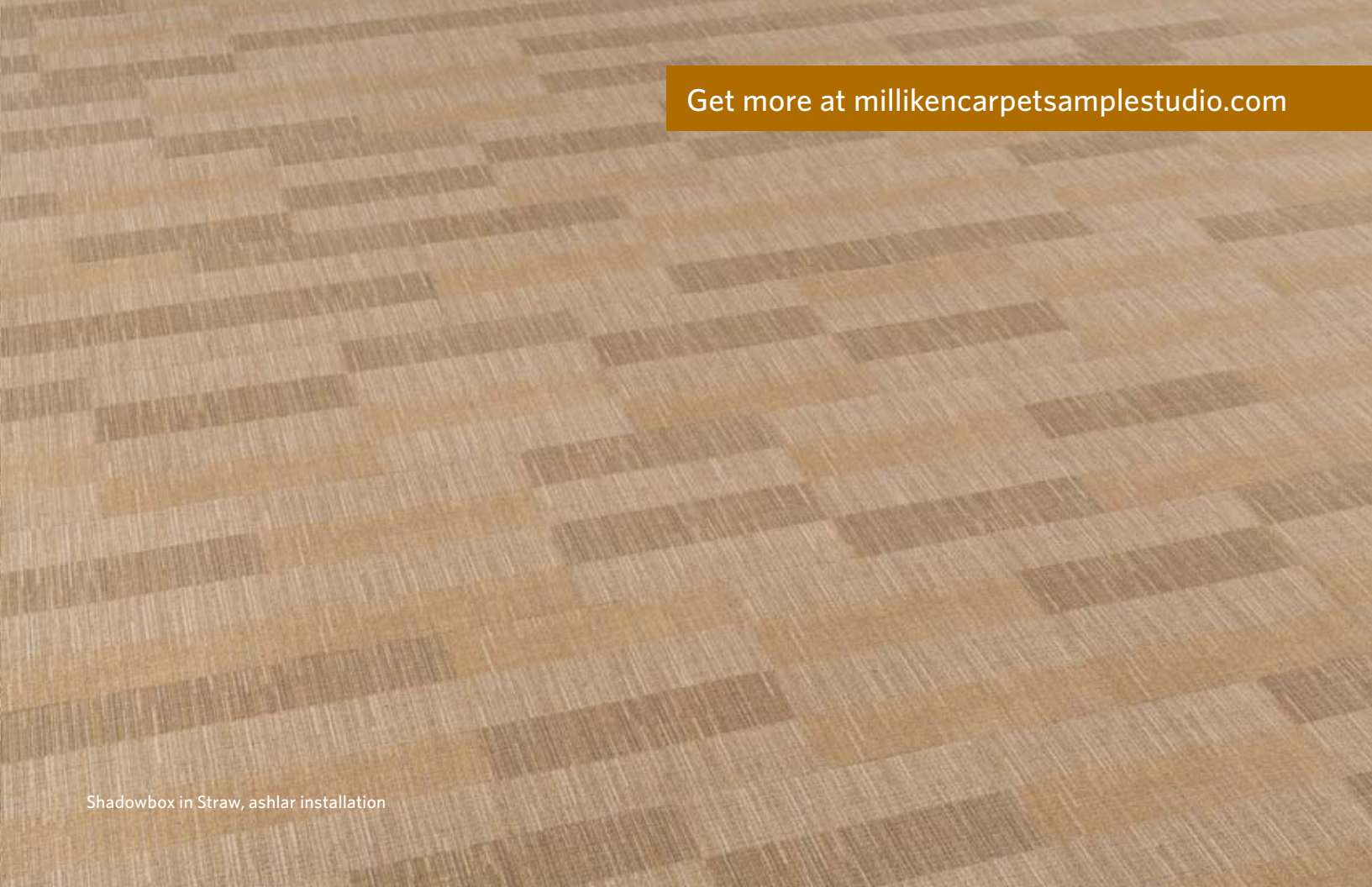


Shadowbox in School Bus, ashlar installation

Silhouette in School Bus, monolithic installation, two tile repeat. Splice, ashlar installation in School Bus.



Splice in Straw, ashlar installation



Shadowbox in Straw, ashlar installation



Silhouette in Straw, monolithic installation, two tile repeat

Silhouette in Nocturne, ashlar installation



Shadowbox in Nocturne, ashlar installation

Splice and Shadowbox in Nocturne, ashlar installation

## OUT OF THE SHADOWS

The Out of the Shadows Collection explores the interplay of light and shadow to create monochromatic textures that gradate softly from light to dark striking a perfect balance of linear and organic forms. Shadowbox offers a non-directional linear with its detailed vertical slivers that shift horizontally to create larger scale subtle gradations. Silhouette is the statement piece of the collection with its larger ogee motif offering a softer edge and a larger scale organic that can be random or precise in its installation. Splice lives up to its name; it splices the elements from Shadowbox with the larger organic Silhouette pattern to offer a medium scale coordinate with subtle organic movement.



Shadowbox in Nocturne, ashlar installation

Get more at [millikencarpetsamplestudio.com](http://millikencarpetsamplestudio.com)

ALL COLORS SHOWN IN SHADOWBOX



**SB101 SAND**  
(Silhouette SL201, Splice SP301)



**SB102 SHROOM**  
(Silhouette SL202, Splice SP302)



**SB103 RAY**  
(Silhouette SL203, Splice SP303)



**SB104 NEW WAVE PINK**  
(Silhouette SL204, Splice SP304)



**SB105 SCHOOL BUS**  
(Silhouette SL205, Splice SP305)



**SB106 FLAME**  
(Silhouette SL206, Splice SP306)



**SB107 ICE**  
(Silhouette SL207, Splice SP307)



**SB108 CADET**  
(Silhouette SL208, Splice SP308)



**SB109 SLEEP**  
(Silhouette SL209, Splice SP309)



**SB110 LAGOON**  
(Silhouette SL210, Splice SP310)



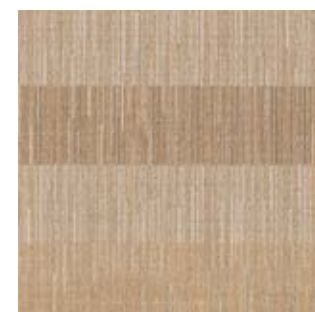
**SB111 SKY**  
(Silhouette SL211, Splice SP311)



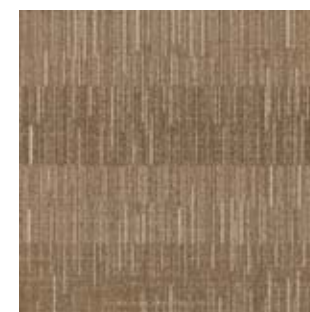
**SB112 NOCTURNE**  
(Silhouette SL212, Splice SP312)



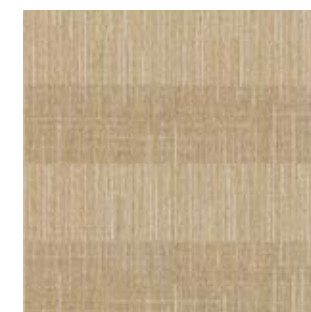
**SB113 SPROUT**  
(Silhouette SL213, Splice SP313)



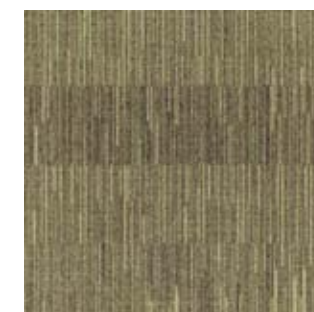
**SB114 STRAW**  
(Silhouette SL214, Splice SP314)



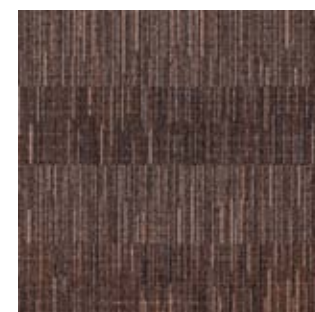
**SB115 MOSS**  
(Silhouette SL215, Splice SP315)



**SB116 ATOMIC**  
(Silhouette SL216, Splice SP316)



**SB117 BLACK FOREST**  
(Silhouette SL217, Splice SP317)

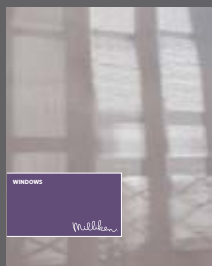


**SB118 GROUND HOG DAY**  
(Silhouette SL218, Splice SP318)



# OUT OF THE SHADOWS

Have you seen our other collections? Visit us online today.



Windows



Monuments & Shrines



Sound and Fury



Southern Analog



## Construction

Tufted, textured loop

## Tile sizes

50cm. x 50cm. (19.7 X 19.7 In.)

## Yarn type

Milliken-certified WearOn® nylon type 6,6

## Stain repel / stain resist / soil release

StainSmart®

## Tufted face weight

19 oz./Sq.Yd. (644.2 G./Sq.M.)

## Pile height

0.11 In. (2.79 mm.) Average

## Average density

6,218

## Standard backing

PVC-Free Underscore™ ES cushion

This cushion-back carpet tile product is covered by one or more patents, published applications and/or patents pending. Specifications are subject to normal manufacturing tolerances and may be changed without prior notice.

## Recommended installation methods



ASHLAR  
All patterns



MONOLITHIC  
Silhouette only



Gold of Platinum Certified  
NSF-ANSI 140-2007a  
International Carpet Association



**Growing greener for over 100 years.**  
Visit [milliken.com](http://milliken.com) for more information.