

# WATER YULUDARLA



Yildaan



Guluuna



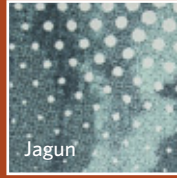
Mayala



Guunu



Bindarray



Jagun



Milliken<sup>™</sup>  
Ontera<sup>™</sup>





## DESIGN INSPIRATION

Milliken-Ontera's collaboration with Saltwater Freshwater Arts Alliance and the National Aboriginal Design Agency, has resulted in the development of the "Water Yuludarla" commercial carpet collection.

"Water Yuludarla" is a contemporary interpretation, based on the artwork of Gumbaynggirr Artist, Brentyn Lugnan.

Inspired by the many elements of Brentyn's original artwork, each of the six designs in the collection signify a connection to both the land and people of the Urunga region – past, current and future. The designs and colourways in the "Water Yuludarla" collection are envisioned for use across multiple market segments and spaces.



Water Yuludarla in Cool Colourway | 6 x 4 TL (24 tiles)  
Also available: 8 x 12 TL (96 tiles)



Artist | Brentyn Lugnan

## IN BRENTYN'S WORDS

*Giinagay (Hello)*

*My name is Brentyn Lugnan. I am a Gumbaynggirr artist, from Urunga on the Mid-North Coast of New South Wales, Australia. I have been engaged by the National Aboriginal Design Agency to create an artwork to serve as the design inspiration for Ontera to develop a commercial carpet collection to highlight contemporary Aboriginal design.*

*The artwork that I have created is titled "Water Yuludarla" (Water Dreaming).*

*It describes my family, and my connection to my country. Currently my artwork is inspired by being back on my home country of Urunga and the Bellinger Valley, which is where my family is traditionally from. The name Urunga is derived from the Gumbaynggirr word Yurruun.ga referencing "long white sands" which represents the long sand spit from Urunga Island where the Bellinger and Kalang Rivers meet.*

*My artworks are almost reclamation of traditional Gumbaynggirr art. Unfortunately, much has been lost over the years due in many ways to the Red Rock massacres of the 1880's and government intervention in our history – which included outlawing of spoken language and traditional and cultural practices. What I and other Goori artists from this region have endeavoured to do over recent years, is come up with a new and contemporary Gumbaynggirr style as a way of representing our country which gives a sense of identity and uniqueness.*

*The Gumbaynggirr people are saltwater freshwater people. My intention for "Water Yuludarla" - and nearly all my artwork - is to represent these aspects in some way.*

*In this artwork, you can see the river flowing through the middle and along the edges of the river are representations of people; my ancestors and all the people who came before us who were sustained and nourished by the river and everything it had to offer. In the middle you see my family symbol branching out to smaller family units. This shows that our Spirit comes from our connection to country, and this extends to our families. So as the family grows and spreads out we still take a piece of home with us. It's all about our connection to country, and how this is integral to Aboriginal people, their culture and their lives. The use of circles and dots has a high spiritual significance in this region as they were mainly used for body ornamentation, Corroboree and initiation. I use them to highlight how sacred the land is to us, and has been for so long.*

*In "Water Yuludarla" there is layer upon layer of connection to country.*

*Yarri yarrang (Bye)*









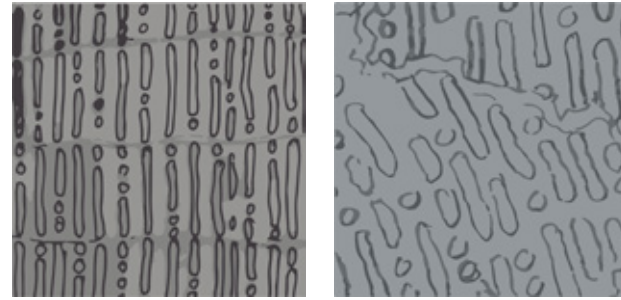
# GUUNU (LIFE)

## DESIGN INSPIRATION

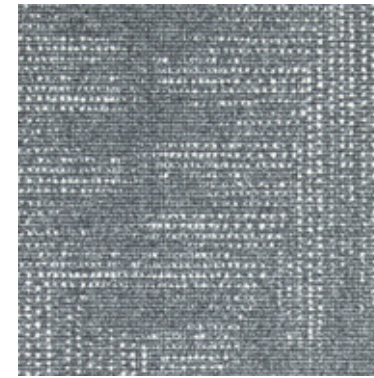
Inspired by the land and the natural environment of the Northern Regions of NSW, the design combines the land boundary elements which has been layered into the background.

The dot elements incorporated into the foreground of the collection can be found in Brentyn's artwork "Water Yuludarla".

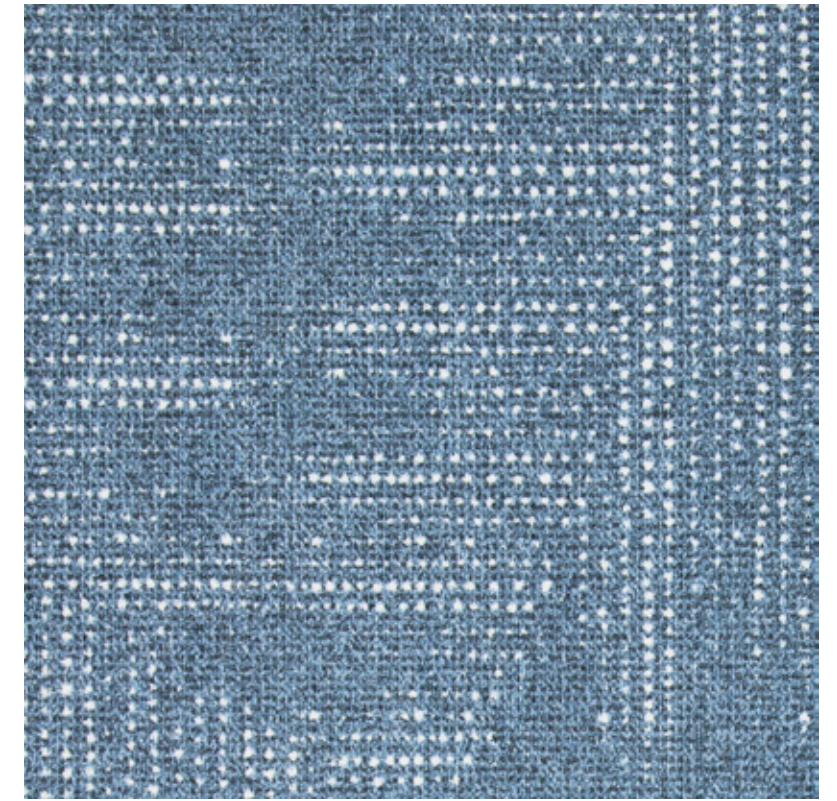
Guunu is a traditional take on the 'dot paintings' recognised to many across the globe as Aboriginal artwork.



Guunu in Stream | GUU140-100



Guunu in Charcoal | GUU6-133



Guunu in Oceanic | GUU73-180

## Guunu

Supplied in a multi-tile pattern.



*Recommended combinations: Guunu (Life) Stream and Charcoal can be applied to installs to complement the Oceanic palette.*



Guunu in Oceanic, Brick (Horizontal) Installation | GUU73-180



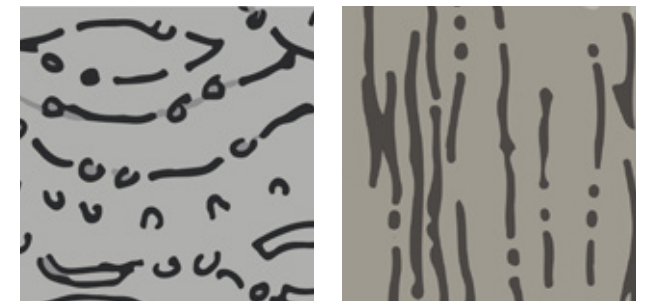


## YILDAAN (DREAMING TRACK)

### DESIGN INSPIRATION

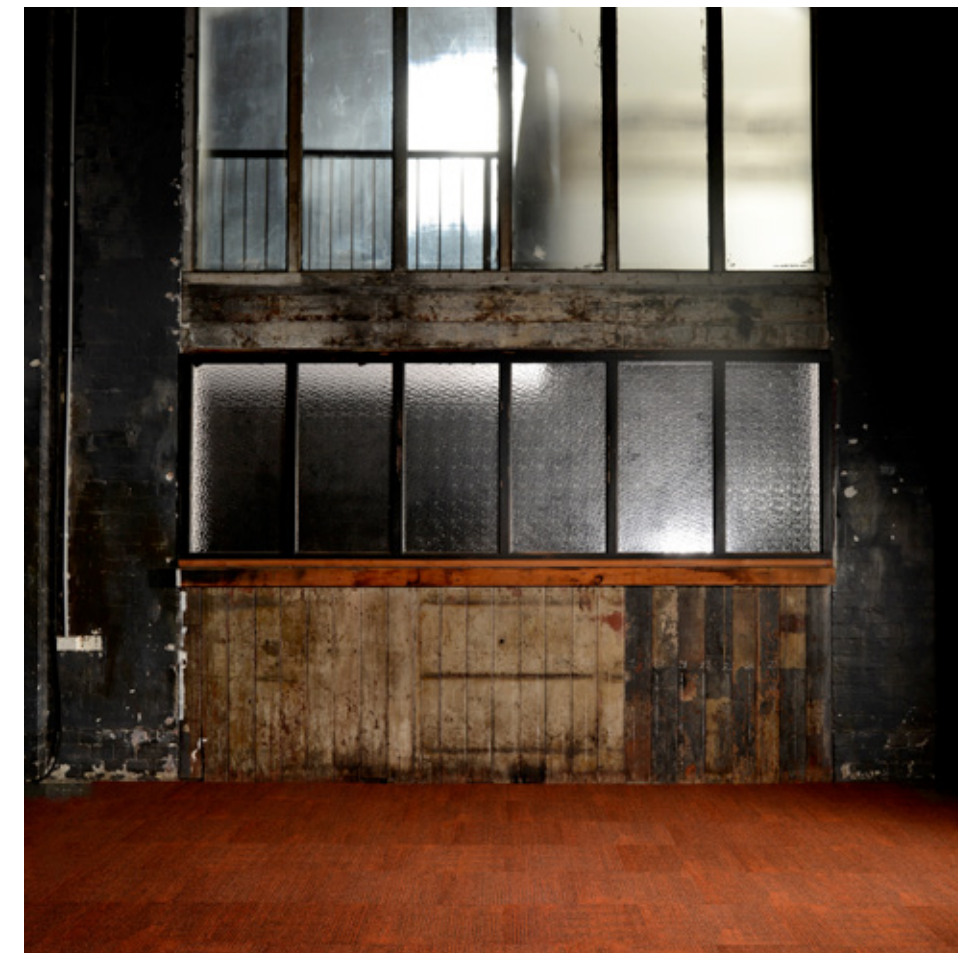
Inspired by photography of the Northern Regions of NSW, the design captures an aerial perspective, showcasing the land textures and water marks which are incorporated into the design.

Yildaan is the reverse to the Guunu design. Both designs can be installed together creating a balancing effect from light to dark tones with the dot elements.



### Yildaan

Supplied in a multi-tile pattern.

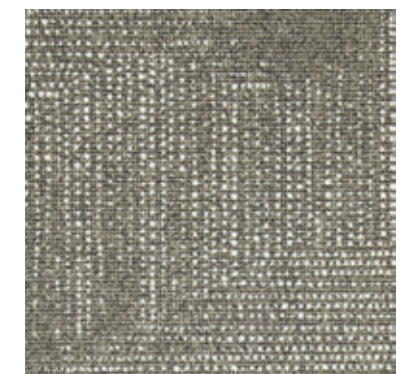


Yildaan in Ochre | YIL33-59

*Recommended combinations:  
Yildaan (Dreaming Track) Blush and  
Guunu (Life) Bark can be applied to installs  
to complement the Ochre palette.*



Yildaan in Blush | YIL146-100



Guunu in Bark | GUU94-59

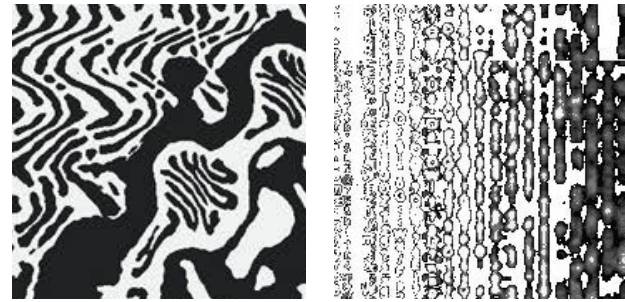


# BINDARRAY (RIVER)

## DESIGN INSPIRATION

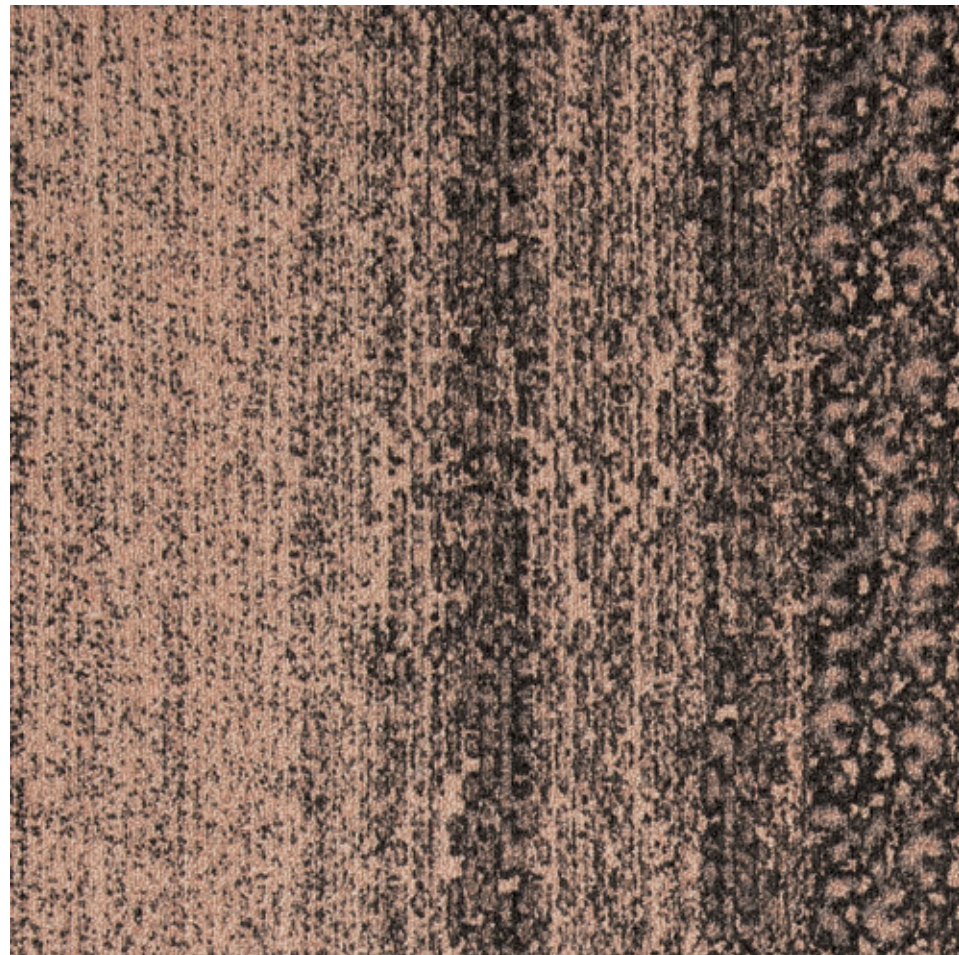
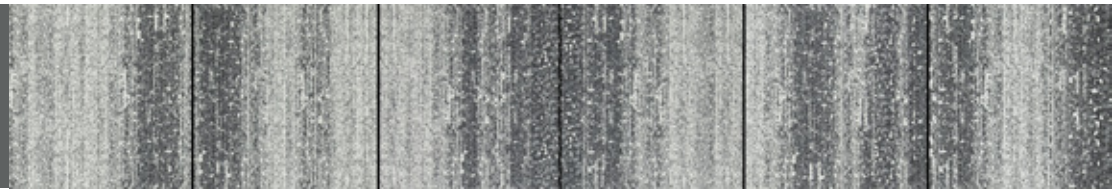
This design captures the textural elements of the river bank and the symbolic connection between people, water and land. It is inspired by the river in the centre of Brentyn's artwork "Water Yuludarla".

Additional inspirational imagery to accompany the Bindarray design captures still shots of the movement of the sand connecting to the water's edge and the effect it displays.



## Bindarray

Supplied in a multi-tile pattern.



Bindarray in Blush | BIN146-100

Recommended combinations:  
Mayala (Moving) Blush and Yildaan (Dreaming Track) Blush can be applied to installs to complement the Bindarray design.



Mayala in Blush | MAY146-100



Yildaan in Blush | YIL146-100



Bindarray in Blush, Brick (Horizontal) Installation | BIN146-100



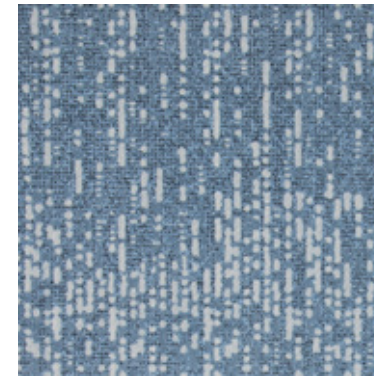
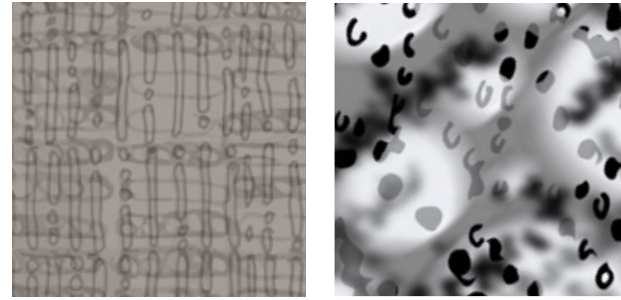
# GULUUNA (RAIN)

## DESIGN INSPIRATION

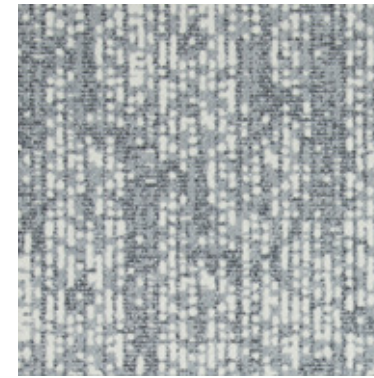
The effect of rain falling gently on the river was the inspiration for this design.

The combination of rain and sunlight reflections, captures the movement and essence of the landscape.

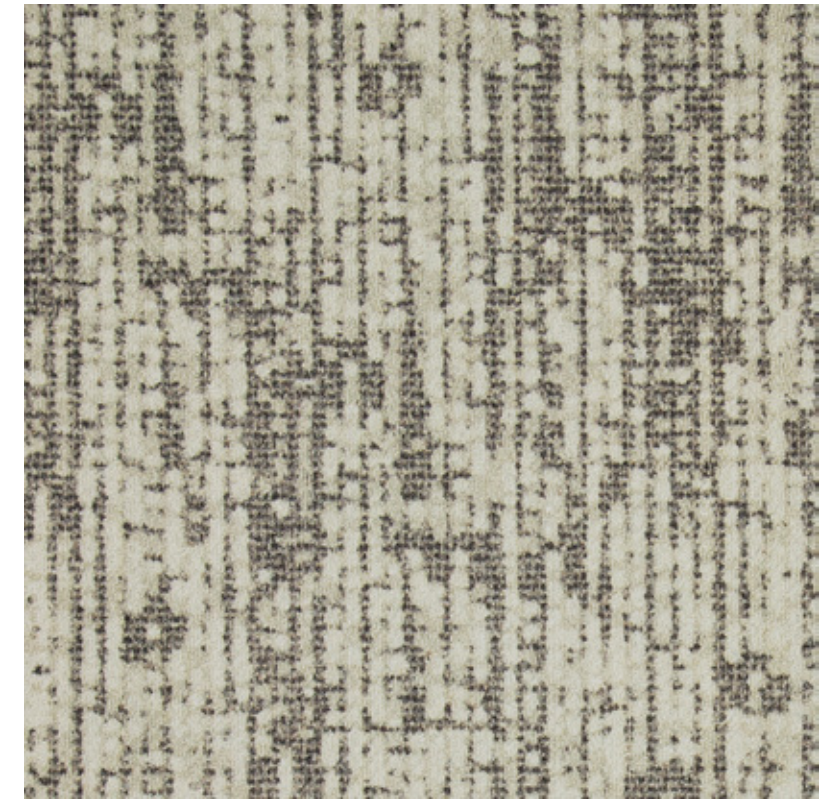
Guluuna is a technological and contemporary look at water with a soft ambience.



Guluuna in Oceanic | GUL73-180



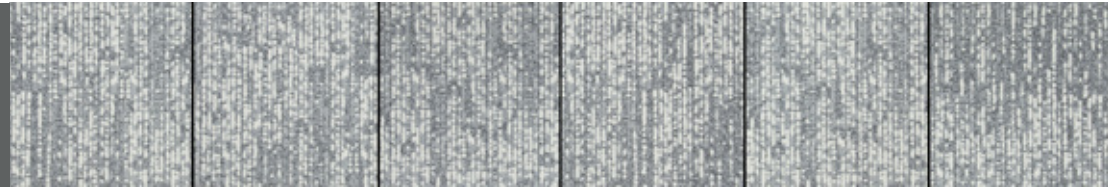
Guluuna in Ash | GUL145-27



Guluuna in Bark | GUL94-59

## Guluuna

Supplied in a multi-tile pattern.



*Recommended combinations: Guluuna (Rain) Oceanic and Ash can be applied to installs to complement the Bark palette.*



Guluuna in Bark, Brick (Horizontal) Installation | GUL94-59





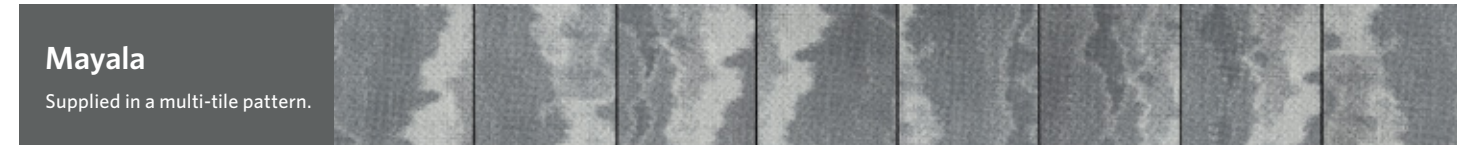
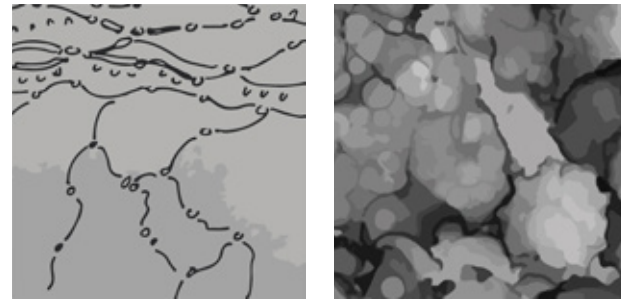


# MAYALA (MOVING)

## DESIGN INSPIRATION

This design captures the natural wind-worn rock formations of the cracked earth from an aerial perspective.

Organic movement of land and water are blended elements within this design creating an abstract and contemporary look.

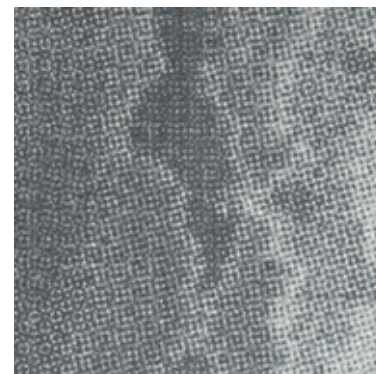


Mayala in Fern and Charcoal, Brick (Horizontal) Installation | MAY141-180 (Fern) & MAY6-133 (Charcoal)

*Recommended combinations:  
Mayala (Moving) Bark and Ash can  
be applied or interchanged to installs to  
complement the Charcoal and Fern palette.*



Mayala in Bark | MAY94-59



Mayala in Ash | MAY145-27



Mayala in Fern and Charcoal, Brick (Horizontal) Installation | MAY141-180 (Fern) & MAY6-133 (Charcoal)

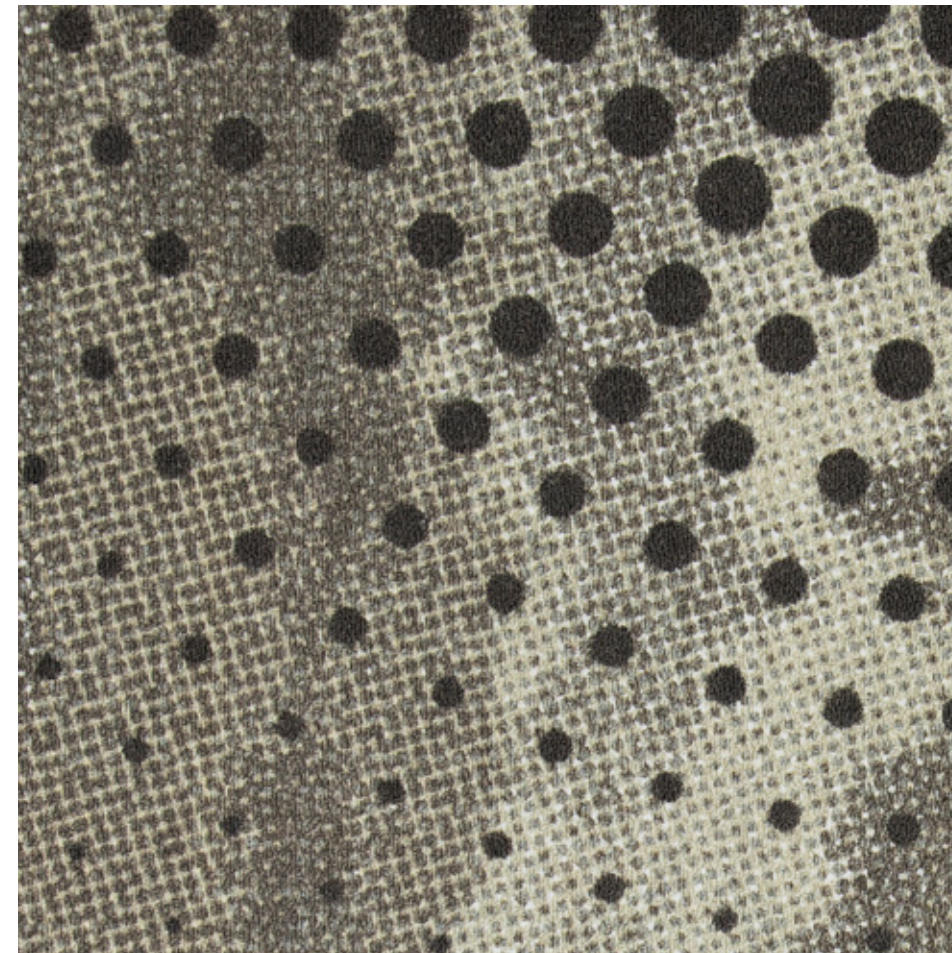
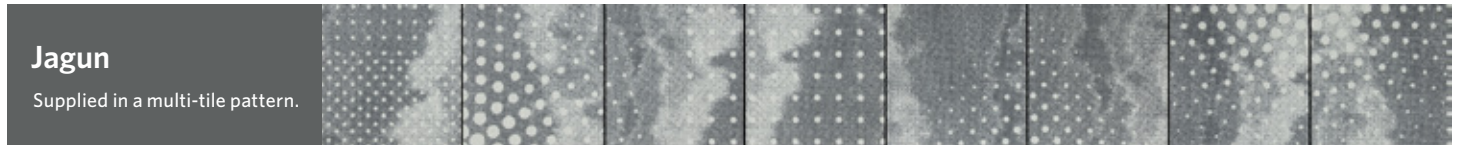
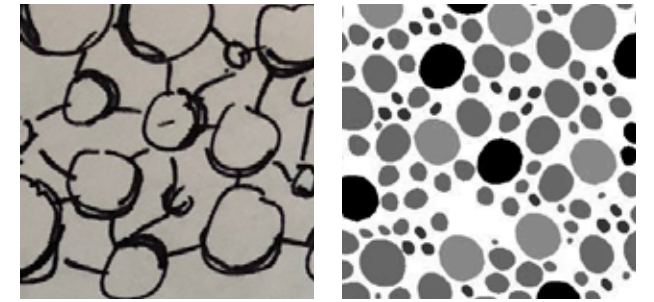




## JAGUN (BIRTHPLACE)

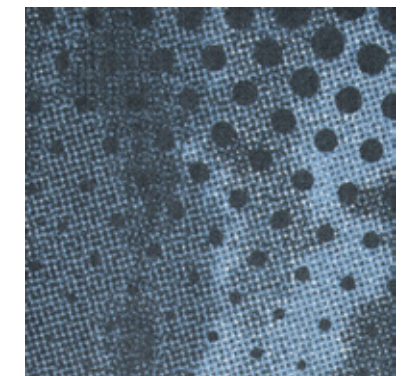
### DESIGN INSPIRATION

This is a layered pattern capturing elements of the Mayala (Moving) design in the background, while incorporating the dot elements from Brentyn's artwork in the foreground.

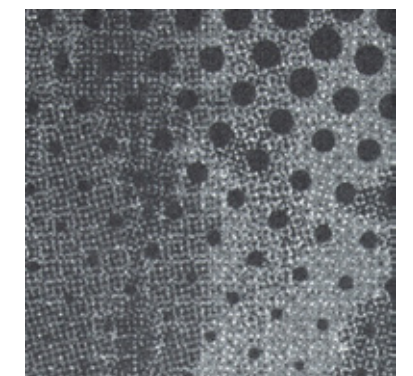


Jagun in Bark | JAG94-59

*Recommended combinations:  
Jagun (Birthplace) Oceanic and Charcoal can be applied to installs to complement the Bark palette.*



Jagun in Oceanic | JAG73-180



Jagun in Charcoal | JAG6-133



# WATER YULUDARLA FEATURED ARTWORK TILE FORMAT

The featured artwork tile format was re-created from Brentyn Lugnan's original "Water Yuludarla" artwork and can be placed in impactful interior spaces, complemented with other "Water Yuludarla" designs.

Standard sizes include:  
6 x 4 TL (24 tiles) and 8 x 12 TL (96 tiles) | Monolithic Installation  
Custom sizes are available by request.

For defined layout methods please visit [ontera.com.au](http://ontera.com.au)



National Aboriginal Design Agency - a social enterprise run by Saltwater Freshwater Arts Alliance.

### We Acknowledge

Milliken-Ontera would like to acknowledge Aboriginal and Torres Strait Islander peoples as Australia's First People and Traditional Custodians. We value their cultures, identities, and continuing connection to country, waters, kin and community.

Milliken-Ontera pay our respects to Elders past and present and are committed to making a positive contribution to the wellbeing of Aboriginal and Torres Strait Islander people, by providing products and a work environment that are welcoming, safe, culturally appropriate and inclusive.



Water Yuludarla | Cool Colourway  
Available in 6 x 4 TL (24 tiles) | 8 x 12 TL (96 tiles)



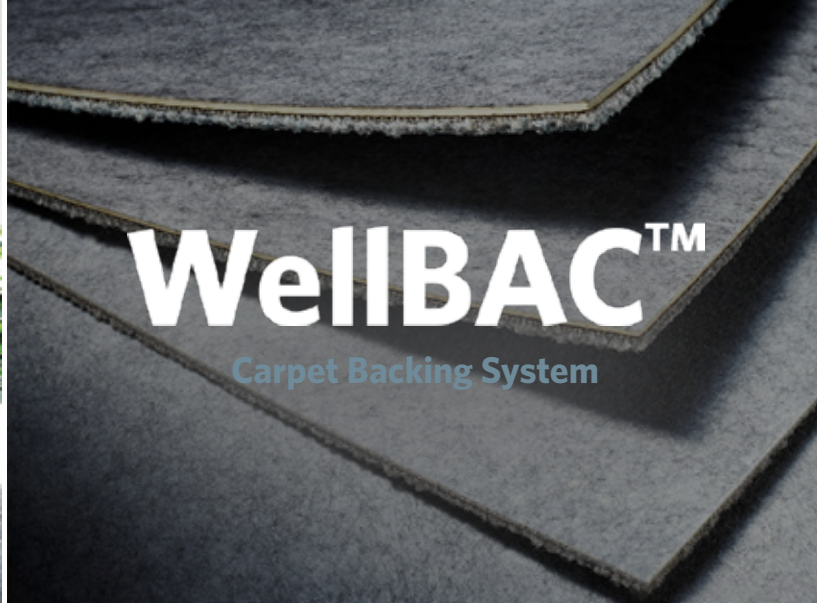
Water Yuludarla | Warm Colourway  
Available in 6 x 4 TL (24 tiles) | 8 x 12 TL (96 tiles)





Water Yuludarla in Warm Colourway | 8 x 12 TL (96 tiles)  
Also available: 6 x 4 TL (24 tiles)





## COLOURWAY

### Yildaan (Dreaming Track)



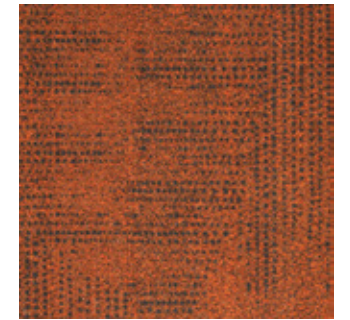
YIL145-27 ASH



YIL140-100 STREAM



YIL146-100 BLUSH



YIL33-59 OCHRE



YIL6-133 CHARCOAL



YIL73-180 OCEANIC



YIL94-59 BARK

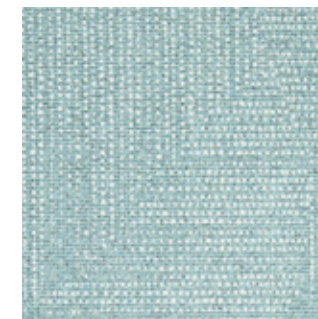


YIL141-180 FERN

### Guunu (Life)



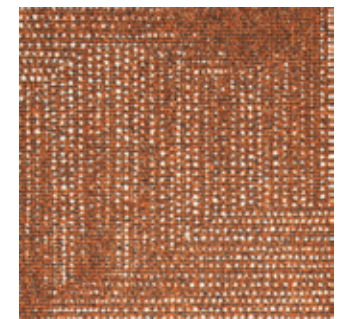
GUU145-27 ASH



GUU140-100 STREAM



GUU146-100 BLUSH



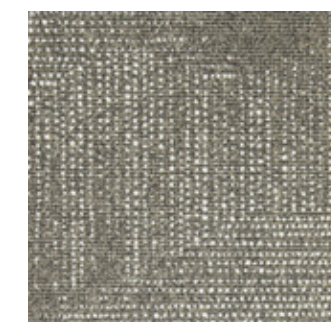
GUU33-59 OCHRE



GUU6-133 CHARCOAL



GUU73-180 OCEANIC



GUU94-59 BARK



GUU141-180 FERN

## Design for Good

The Milliken-Ontera culture is driven by the concept of "Doing Good".

Doing Good transcends into multiple areas of our business – it's about doing good for our staff, our customers and the communities we live in. It's about ensuring the products we produce can do good for their final purpose by delivering the best possible outcome for our customers and occupants of interiors spaces.

Milliken-Ontera is doing good environmentally with our 'Landfill Diversion' program and is a Founding Member of the 'WELL Living Lab'.



**Good for Health & Wellbeing**



**Good for the Environment**



**Good for Productivity**

## WELLBAC™

Milliken-Ontera is doing good for Health and Wellbeing with our WellBAC™ backing system.

WellBAC™ is Milliken-Ontera's family of carpet tile backings - all sustainably engineered for comfort, performance and ease of installation – effectively enhancing the wellbeing of building occupants and the professional flooring contractor.

### The WellBAC™ range delivers:



Industry leading moisture management with non-reactive backings – to enhance the installation process.



Up to 24% greater underfoot comfort for enhanced ergonomics while standing.



Up to 50% improved acoustics for quieter, more productive spaces.



3rd party verified Red List Free products for occupant and installer wellbeing.



Enhanced Indoor Air quality (Low VOC) for improved occupant and installer wellbeing.

## Indigenous Engagement

Milliken-Ontera is doing good with our Indigenous Engagement Program by actively supporting Indigenous communities.

### Our program includes:

Provision of carpet for indigenous communities and projects

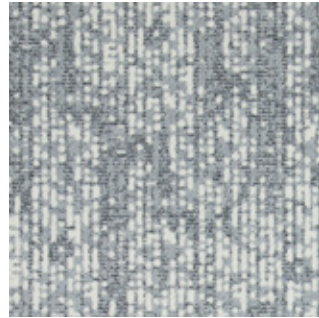
Training on carpet installation

Promotion of indigenous design

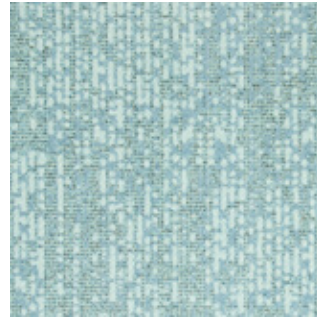


# COLOURWAY

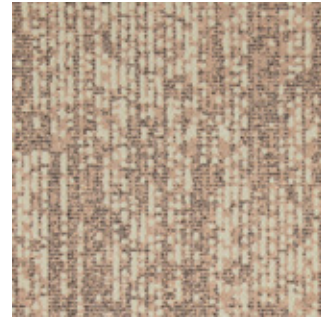
## Guluuna (Rain)



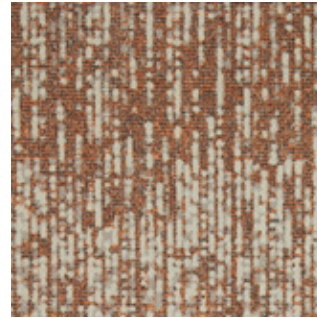
GUL145-27 ASH



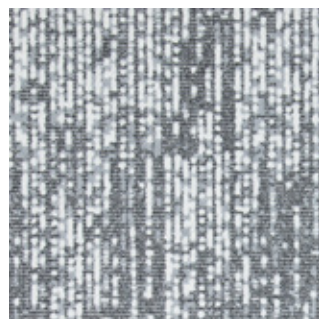
GUL140-100 STREAM



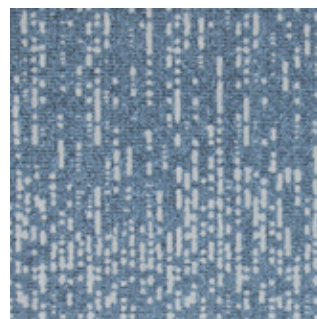
GUL146-100 BLUSH



GUL33-59 OCHRE



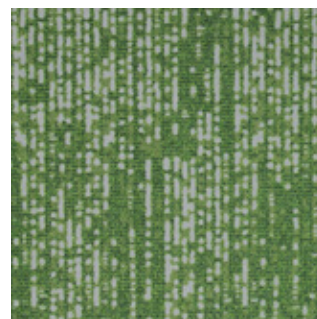
GUL6-133 CHARCOAL



GUL73-180 OCEANIC

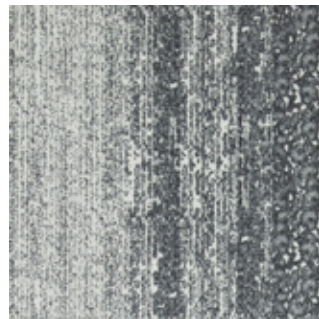


GUL94-59 BARK

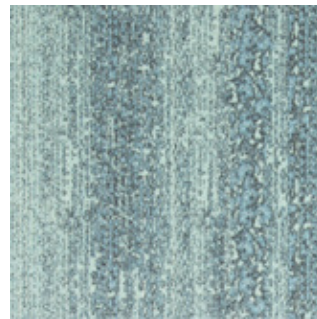


GUL141-180 FERN

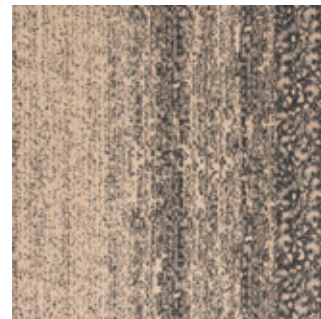
## Bindarray (River)



BIN145-27 ASH



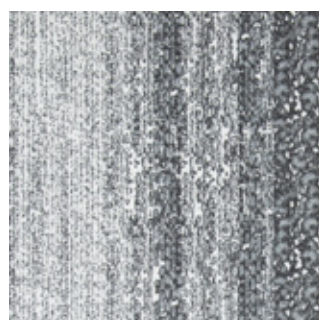
BIN140-100 STREAM



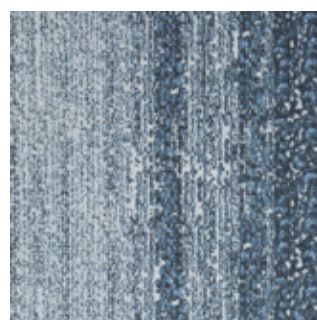
BIN146-100 BLUSH



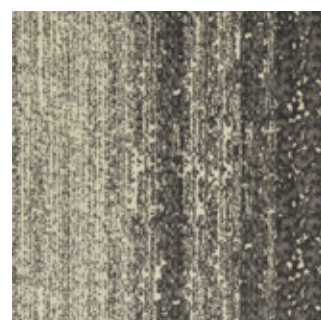
BIN33-59 OCHRE



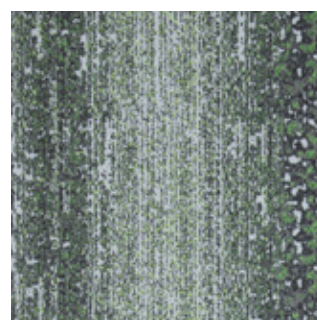
BIN6-133 CHARCOAL



BIN73-180 OCEANIC



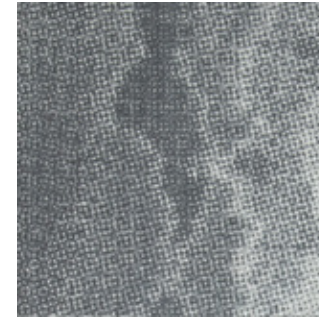
BIN94-59 BARK



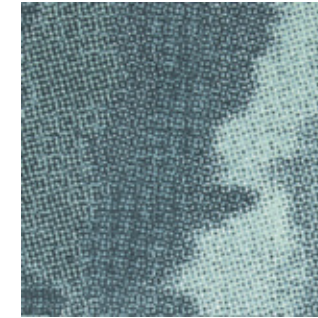
BIN141-180 FERN

# COLOURWAY

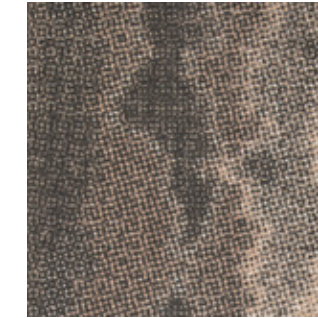
## Mayala (Moving)



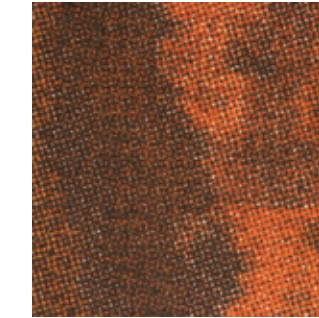
MAY145-27 ASH



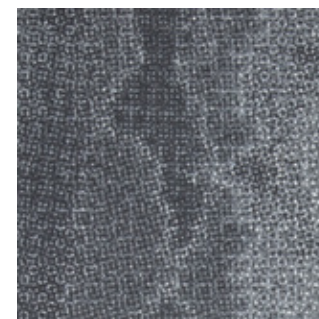
MAY140-100 STREAM



MAY146-100 BLUSH



MAY33-59 OCHRE



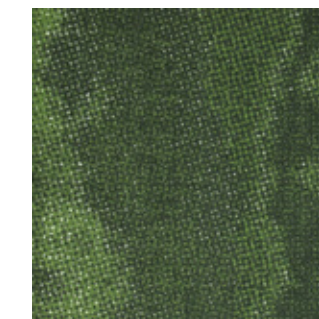
MAY6-133 CHARCOAL



MAY73-180 OCEANIC

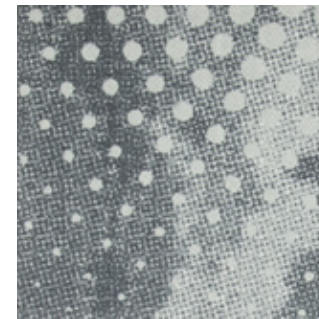


MAY94-59 BARK

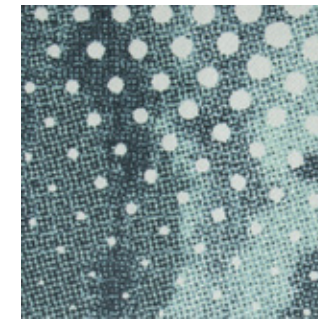


MAY141-180 FERN

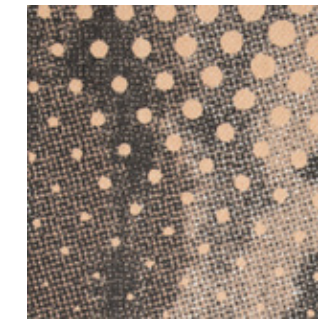
## Jagun (Birthplace)



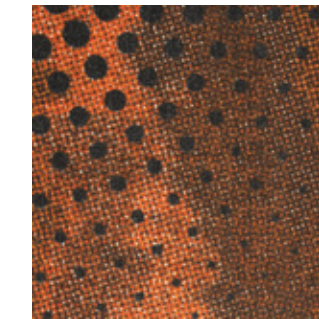
JAG145-27 ASH



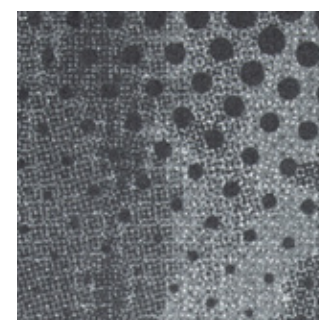
JAG140-100 STREAM



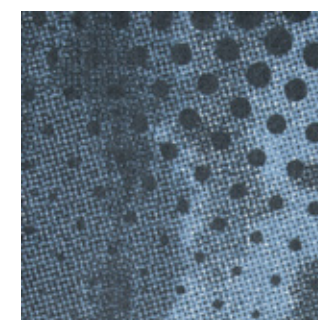
JAG146-100 BLUSH



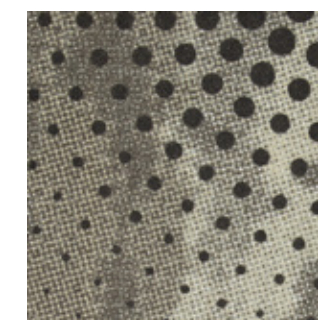
JAG33-59 OCHRE



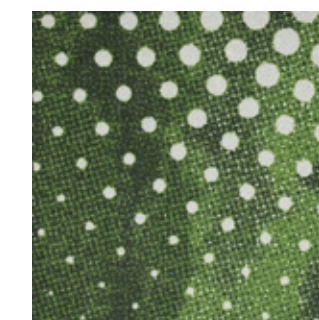
JAG6-133 CHARCOAL



JAG73-180 OCEANIC



JAG94-59 BARK



JAG141-180 FERN

Colour Statement: Representation of product colours may vary from colours as seen in this brochure due to lighting conditions and printing settings. Please contact your sales representative to obtain carpet samples to view the accuracy of the colours.



# WATER YULUDARLA

## SPECIFICATION

### Construction

Tufted, Textured Loop

### Tile Size

50 cm x 50 cm

### Yarn Type

Milliken Certified Wear-On®  
Nylon Type 6,6

### Stain Repel | Stain Resist | Soil Release

Stain Smart®

### Antimicrobial

AlphaSan® AF Built-In Protection

### Dye Method

Millitron® Dye Injection

### Tufts

144/in<sup>2</sup> (2,230 / 100cm<sup>2</sup>)

### Gauge

1/10

### Stitches Per Inch

14.4

### Standard Backing

WellBAC™ Comfort (PVC-Free)  
(non-reactive cushion backing)

### Nominal Total Thickness

7.5 mm

### Nominal Total Weight

103 oz/yd<sup>2</sup> (3,500 g/m<sup>2</sup>)

### Recyclable

100%

### VOC

Pass (ISO 10580:2010)

### Recommended Maintenance

Refer to Milliken-Ontera Care & Maintenance guide Millicare® Care plan available in some regions.

### Environmental

Declare 3<sup>rd</sup> Party Verified RED LIST FREE

### Acoustic Rating

NRC ≥0.25 (Exceeds standard acoustic requirements of the Carpet Institute)  
Ln,w ≤47 dB (Well below the BCA limit of 62dB)

### Recommended Area of Use

Commercial Extra Heavy duty

### Exclusive: Site-Related Solutions (SRS)

Milliken-Ontera Cushion backed tile + non-reactive standard adhesive means install 60 days after new concrete pour, fully warranted no testing required. Refer millikenontera.com.au

### Warranty

15-Year Waer Warranty  
15-Year Dimensional Stability warranty  
15-Year Anti-static Warranty  
15-Year Castor Chair wear Warranty

### Installation Method



Brick  
(Horizontal)



Alliance  
Founding  
Member



Declare.



NATIONAL  
ABORIGINAL  
DESIGN AGENCY

### Australia

Toll Free: 1800 668372

### New Zealand

Toll Free: 0800 668372

This WellBAC™ cushion-back carpet tile product is covered by one or more patents, published applications and/ or patents pending. Specifications are subject to normal manufacturing tolerances and may be changed without prior notice. Copies of actual test results are available upon request.



Growing greener for over 100 years.  
Visit [milliken.com](http://milliken.com) for more information.