

A photograph of a grey stone wall with a wooden geometric pattern and a red triangle. The wooden pattern consists of several light-colored wood planks arranged in a complex, interlocking geometric design. A single, solid red triangle is placed on the stone wall to the left of the wooden pattern. The overall composition is modern and architectural.

# OBEX

## Entrance Flooring Solutions

Providing the finishing touch to your building

Milliken™



## MILLIKEN ENTRANCE FLOORING SOLUTIONS

As part of the Milliken Floor Covering Division, Milliken OBEX operates as a global provider of entrance flooring solutions and textile matting systems for circulation areas in public or commercial buildings. We have manufacturing facilities in the UK, USA, and China - supported by a local team of sales and customer service associates who are dedicated to promoting products that do good for the world and create a better living environment.

We offer a large choice of products, presented in this catalogue, to ensure the best possible floor protection against dirt and moisture coming from foot and wheeled traffic. These products are created with respect to the Environment and coordinated in design and colour to provide the perfect balance between function and aesthetics.

## MILLIKEN AND COMPANY

By combining science with design and insight, Milliken tackles the issues and concerns of today. Every day, our community of innovators is invigorated by the challenge of finding creative ways to enhance peoples' lives and make the world around us easier, safer, more sustainable and more beautiful.

Milliken has long led the way for "knowledge-based" investment and innovation, and has accumulated more than 5,000 patents worldwide - since our founding in 1865. With 39 manufacturing facilities located in the U.S., U.K., Belgium, France and China, and with other sales and service operations throughout the Americas, Europe and Asia, Milliken's nearly 7,000 associates work to create entirely new customer experiences, build for the future and create products that do good for the world.



Global headquarters in Spartanburg, South Carolina - the world's largest textile research and development facility

### OUR VALUES

At Milliken, we've always believed prosperity and responsibility must coexist - and we conduct business with a higher purpose and a longer-term view. As such, we are guided by three values: Ethics, Excellence and Leadership. These are the purpose of our play.

### BEYOND ETHICS TO DOING GOOD

While we hold ourselves accountable to the highest ethical standards, we derive our greatest satisfaction from creating innovations that help solve the world's problems, adding value to peoples' lives, improving health and safety, and making this world sustainable.

### BEYOND EXCELLENCE TO CREATING NEW EXPERIENCES

We create the highest quality products and services because our customers deserve no less. While we take pride in demonstrating excellence in everything we do, we find even deeper gratification in creating products that completely change the customer's experience.

### BEYOND LEADERSHIP TO BUILDING FOR THE FUTURE

Following our founders' long-term view, we recognize that for our customers and our company to be economically sustainable, our innovations must enable us both to win in the market and to reinvest for the future.



In 2015, Milliken™ celebrated its 150th anniversary



MILLIKEN HAS BEEN RECOGNISED AS ONE OF THE **WORLD'S MOST ETHICAL COMPANIES** BY ETHISPHERE™ MAGAZINE EVERY YEAR SINCE THE FIRST LIST IN 2007





## FULLY INTEGRATED MANUFACTURING



With fully integrated manufacturing in the UK including tufting, dye injection technology and backing lines, Milliken OBEX provides regional support to its European customers and long term partners.

Staying at the forefront of innovation, Milliken OBEX offers a large choice of high quality entrance flooring solutions to ensure the best possible floor protection against dust, dirt and moisture.

Committed to delivering products and services that do good for the world while respecting the planet and its resources, Milliken creates a better environment for people to enjoy their working, shopping or traveling experience in a clean and safe place.



**Operational excellence secures the present  
Innovation excellence secures the future**

*Roger Milliken 1915 - 2010*



## THE NEED FOR ENTRANCE FLOORING

In commercial and public buildings, property owners and facility managers face the daily challenge of trying to keep their facilities clean and safe, as well as optimising their maintenance budget.

### DID YOU KNOW THAT.....

- 70% to 90% of the soil which enters a facility is "walked in" through the front door(s), and can amount to 24 pounds per 1,000 people when no matting is installed. *"Worldwide Cleaning Association"*
- 40% of any cleaning budget is used to clean floors. *"Carpet & Floor Covering Review"*
- Indoor air is found to be between two and five times more polluted than outside air, yet most people spend 60% to 90% of their time indoors. *"Environmental Protection Agency and American Lung Association"*
- Plaintiffs win 51% of premise liability claims for slips and falls. *"Jury Verdict Research"*

### THE OBEX SOLUTION.....

Installing the OBEX entrance flooring solution, with the right maintenance program, will lengthen the lifetime and retain the appearance of the interior flooring products.

#### SAVING ON

- floor maintenance
- insurance for claims and liabilities
- cleaning frequency
- premature floorcovering replacement

#### CREATING THE RIGHT FIRST IMPRESSION

- you do not get a second chance to make a first impression!

## THE ARCHITECTS VOICE

According to the AIA, a minimum of 7.5m of entrance flooring products must be installed to address 100% of the problem caused by dirt and moisture entering a building. This can go up to 12m in extreme traffic areas such as airports.

### Mat Length vs. Percentage of Dirt and Moisture Caught

1.5m = 33% of Soil and Moisture captured

3.0m = 52%

6.0m = 86%

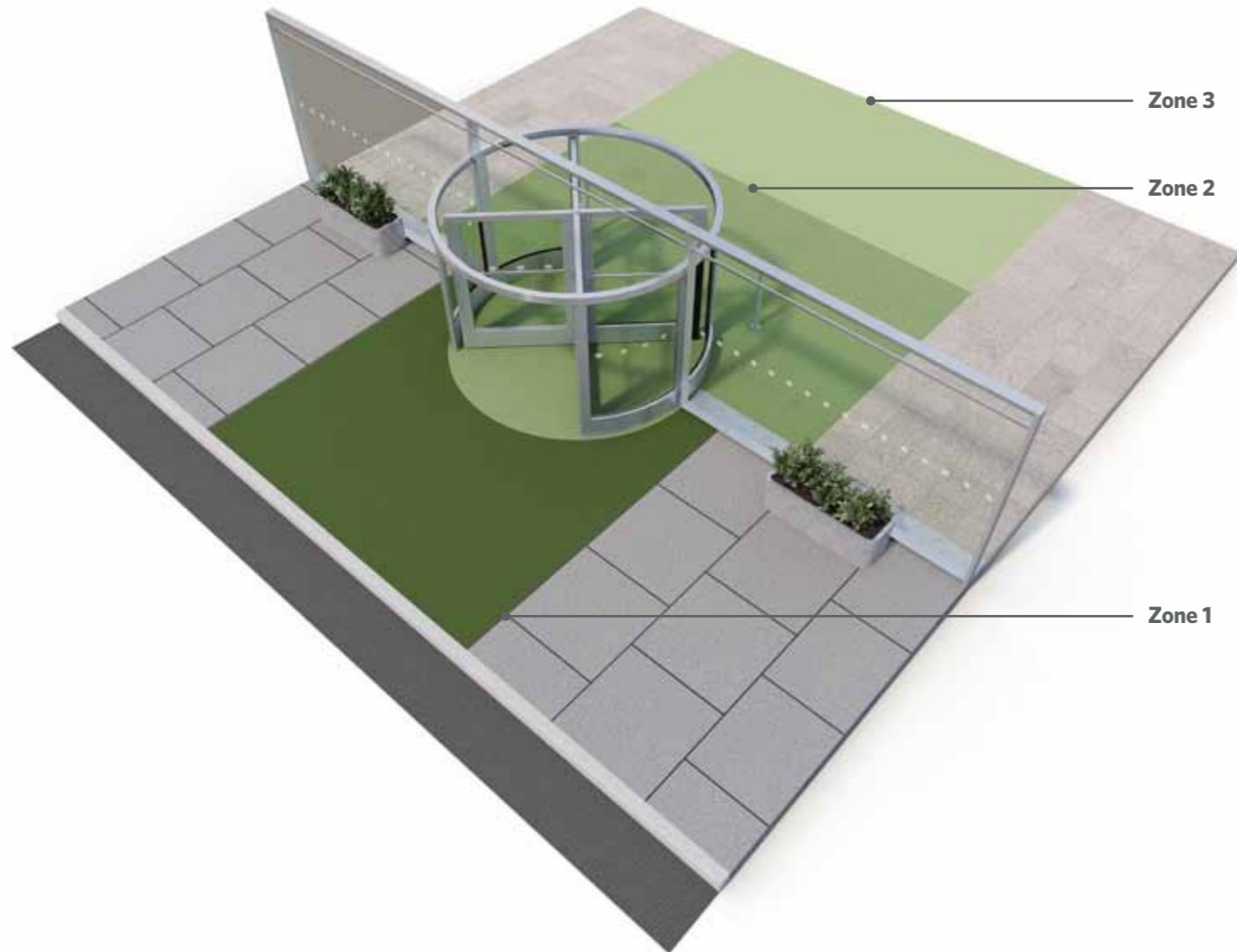
7.5m = 100%

**Source:**  
American Institute  
of Architects (AIA)

## OBEX

The OBEX product range offers highly effective and comprehensive entrance solutions. It has been designed as a three zone barrier system to prevent dirt and moisture from entering a building. Available in co-ordinated colours and patterns, OBEX entrance products are engineered to increase the functionality of a building's entrance without compromising on design or aesthetic. Simple and easy to work with, OBEX offers entrance systems which can be recessed or surface-mounted, including exterior and interior applications.

## THE OBEX PRODUCT COLLECTION PROVIDES A COMPLETE 3 ZONE CONCEPT SOLUTION



**ZONE 1 OUTDOORS:** The area just before the building access -requires a product with scraping action to remove grit and heavy dirt particles, including snow or sand.  
**Milliken Product Solution:** Prior and/or Tergo modular scraper system.

**ZONE 2 INDOORS:** The primary area just inside the building where a product with dual action - scraping and moisture retention - should be installed to defend against dirt and moisture. This area often features a recessed mat well.  
**Milliken Product Solution:** Tergo and/or Forma - a modular scraper and textile duo system or fitted roll goods.

**ZONE 3 INDOORS:** The secondary area inside the building after Zone 2. A textile product for moisture retention is the preferred solution. Also applicable to circulation areas other than entrances.  
**Milliken Product Solution:** Quadrus - a modular tile with duo scraper textile - or fitted roll goods or mats.

**SPECIAL USAGE:** For areas with specific needs such as brand image promotion, anti-fatigue, wet areas, communication or messages, etc. **Colour Symphony HD** logo mats and standard mats are a perfect option for this application.

## CONTENTS

### OBEX Modular Entrance Flooring Solutions (Zones 1, 2 & 3)

PRIOR	P10
TERGO	P11
FORMA	P12-13
QUADRUS	P14-15

### OBEX Textile Roll Goods (Zones 2 & 3)

FORIS	P18-19
REGIA DUO	P20
REGIA	P21
ANSA	P22
VIA	P23

### Textile Mats (Zones 1, 2 & 3)

HEAVY DUTY SCRAPER	P26
CERO PLUS	P27
FORIS PATTERN MATS	P28-29
WOM ORIGINAL	P30
WOM PLUS	P31
WOM UNICOLOUR	P31
COLOUR SYMPHONY HD	P32-33
MATVERTISER	P33

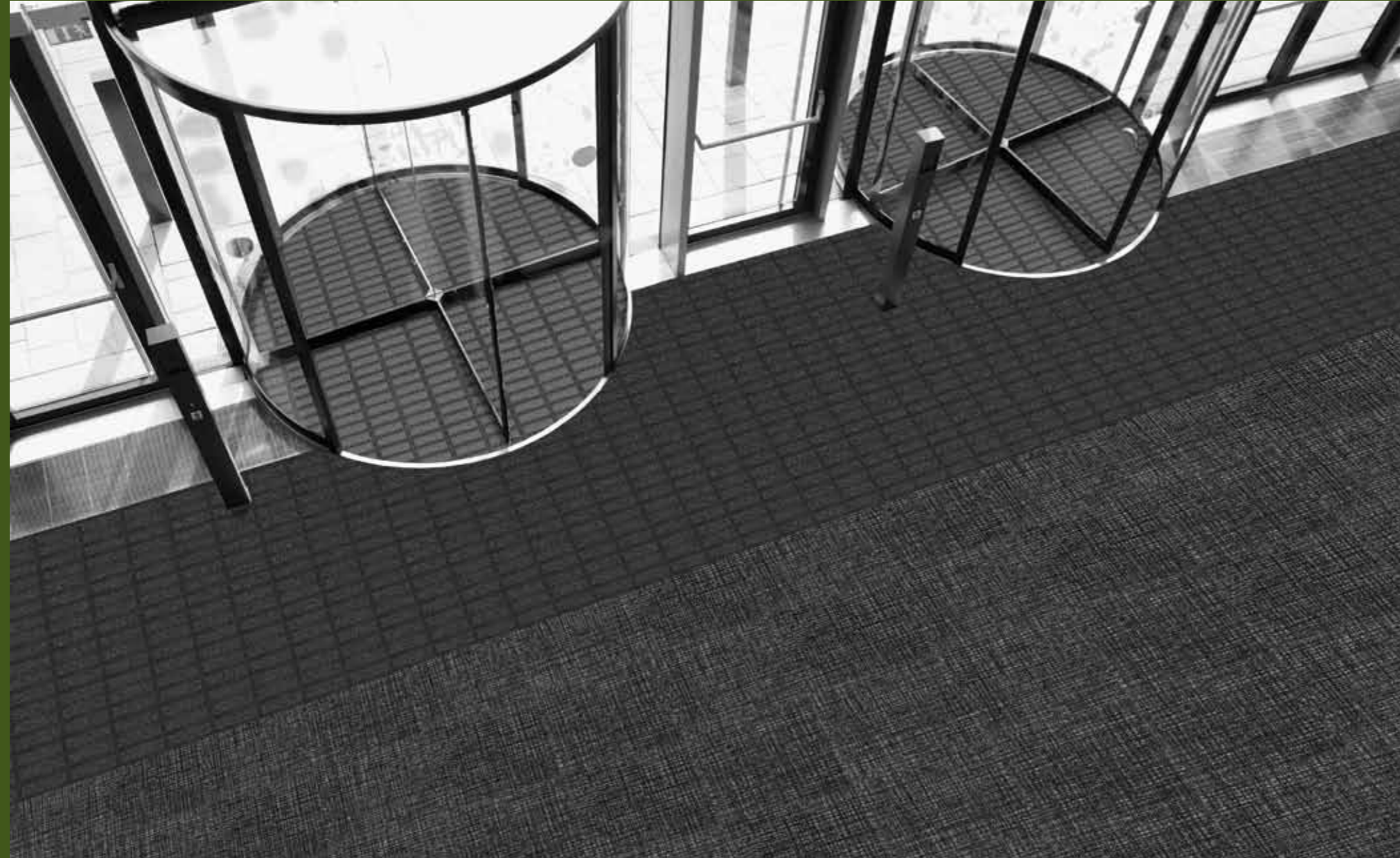
### Rubber Mats (Special Usage)

COMFORT	P36
ULTRAFLOW	P37

### Accessories and Technical Information

PERFORMANCE	P40
INSTALLATION	P41
EDGING SYSTEMS	P42
CLEANING	P43
TECHNICAL SPECIFICATIONS	P44-50





# OBEX MODULAR ENTRANCE FLOORING SOLUTIONS

## SECTION CONTENTS

PRIOR	P10
TERGO	P11
FORMA	P12-13
QUADRUS	P14-15





## PRIOR - ZONE 1



**Prior** is a flexible multi-purpose modular flooring product with a structure that incorporates resilient scrapers to remove particulate dirt. For outdoor applications, the open construction of **Prior 16** is recommended for drainage.



**Prior** can also be installed together with **Tergo** or **Forma** in recessed mat wells, or surface mounted with edging system. Installing **Prior** tiles outside traffic areas can minimise the total cost of the installation as well as creating a unique design feature.



PRIOR 11mm CLOSED



PRIOR 16mm CLOSED



PRIOR 16mm OPEN



## TERGO - ZONE 1 & 2



**Tergo** modular tiles are manufactured with heavy duty textile inserts made of 100% polyamide monofilaments for a superior brushing action.



**Tergo** works as a first line of defence and can be combined with **Forma** tiles for a complete entrance flooring solution. **Tergo** can be installed in sheltered outdoor areas, surface mounted or fitted in mat wells.



TERGO 11mm CLOSED



TERGO 16mm CLOSED



TERGO 16mm OPEN





## FORMA - ZONE 2



March/April 2015 Edition  
Architect and Builder Magazine  
South Africa **ZONE 2**

The combination of the patented Milliken duo scraper textile with the OBEX modular tile carrier produces a revolutionary matting system which is unequalled in performance and unique in aesthetics : **Forma**.



The textile in **Forma** is constructed with two types of polyamide 6.6 high quality fibres:

- The multi filaments capture moisture instantly when people walk on the textile.
- The mono filaments work as tough scrapers against dirt particles carried by shoes.



FORMA 11mm CLOSED



FORMA 16mm CLOSED



FORMA 16mm OPEN



## FORMA - ZONE 2

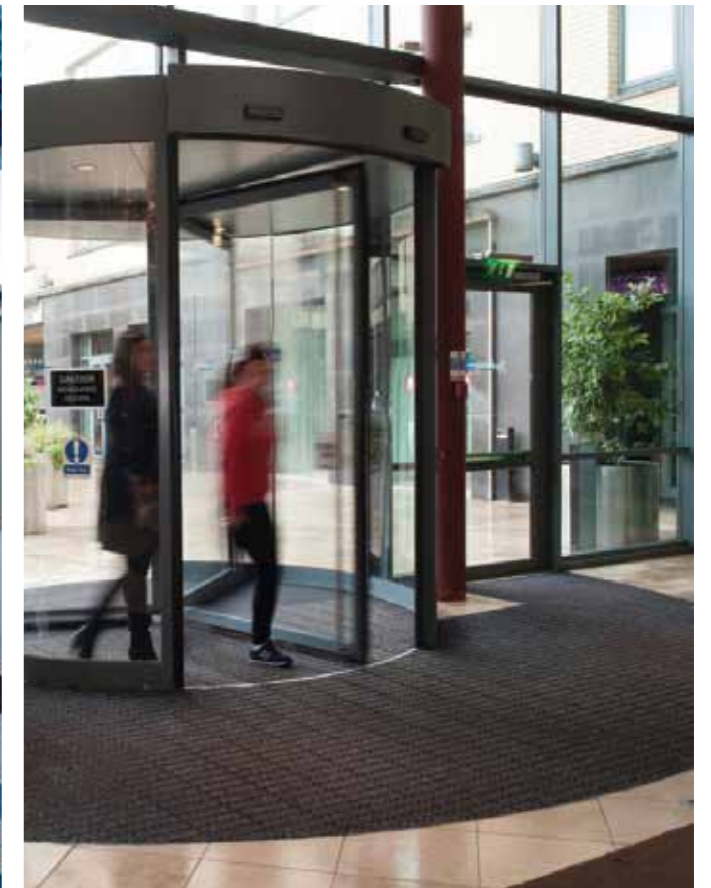


**ZONE 2**

**Forma** is suitable for a wide variety of applications, from office buildings to high traffic areas such as airports and shopping centres. Combining **Tergo** and **Forma** tiles together on the same installation further increases performance on dry dirt pick up by 50%. This offers best market performance for function and durability.



Modular tiles to suit any design and shape options







## QUADRUS - ZONE 2 & 3



**Quadrus** is a modular entrance tile system that creates a stunning first impression in a space that must also deal with an active world and create a barrier against the elements. Designed to provide a superior combination of performance and aesthetics, the ECONYL® dual-fibre polyamide yarn and open textile construction will stop dirt and moisture at the door, while allowing easy removal during maintenance.

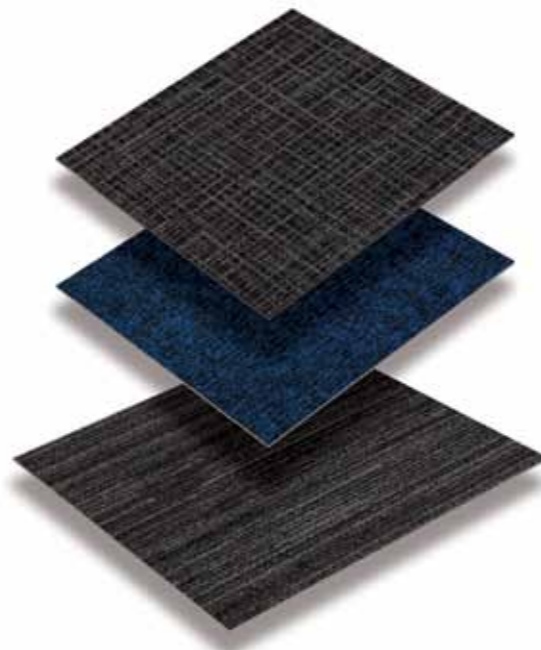
**Quadrus** is offered in three contemporary designs, Galaxy, Comet and Star, available in a range of colours to create the perfect balance of design and function.

### QUADRUS TEXTILE IS SPECIALLY DESIGNED TO PROVIDE SUPERIOR PRODUCT PERFORMANCE

**Quadrus** modular tiles are offered with Comfort Plus® as standard, the environmentally friendly cushion backing that delivers superior comfort, sound absorption, and durability.

**Quadrus** is also available with TractionBack®, an innovative high-friction backing system that is faster and more cost efficient to install, and environmentally superior to wet adhesives.

Daily vacuuming is recommended to maintain product performance. As needed, periodic hot water extraction is recommended to restore appearance and function.



## QUADRUS - ZONE 2 & 3



**Quadrus** in zone 2 installed with Tergo

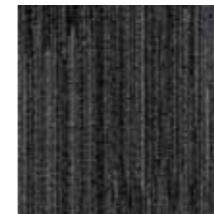


**Quadrus** in zone 2 - juxtaposed with hard floor

### Comet

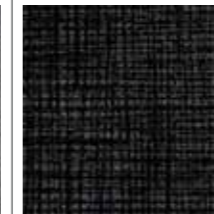


CMT27 Jupiter

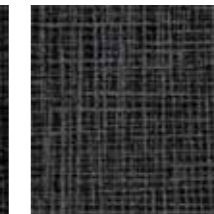


CMT118-27 Moon

### Star

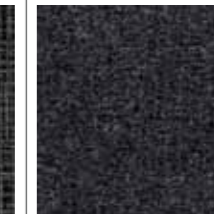


SAR27 Jupiter

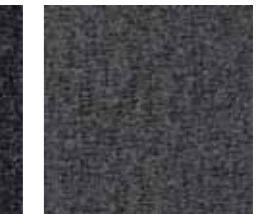


SAR118-27 Moon

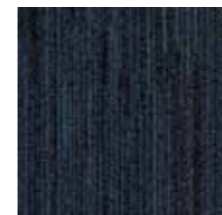
### Galaxy



GXY27 Jupiter



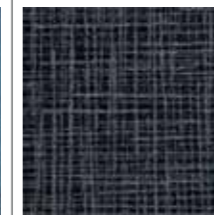
GXY7722 Diamond



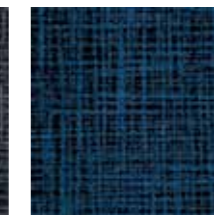
CMT73 Uranus



CMT183 Neptune



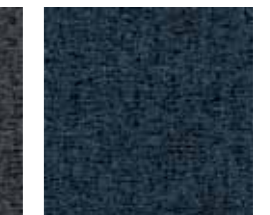
SAR73 Uranus



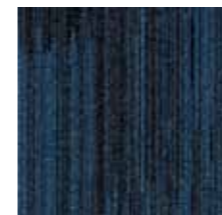
SAR183 Neptune



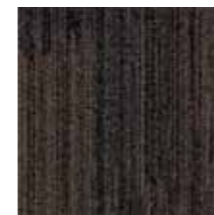
GXY73 Uranus



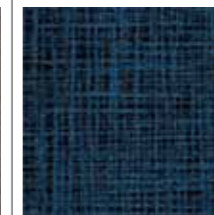
GXY123 Earth



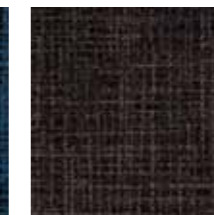
CMT123 Earth



CMT96 Mercury



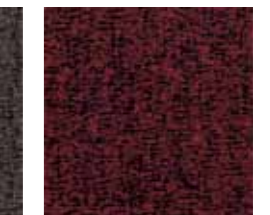
SAR123 Earth



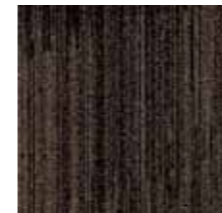
SAR96 Mercury



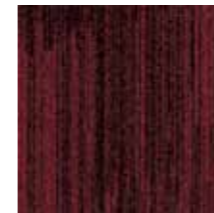
GXY114 Venus



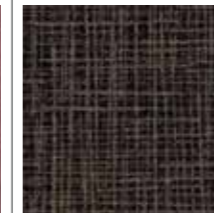
GXY169 Mars



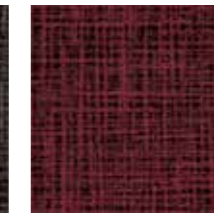
CMT114 Venus



CMT169 Mars

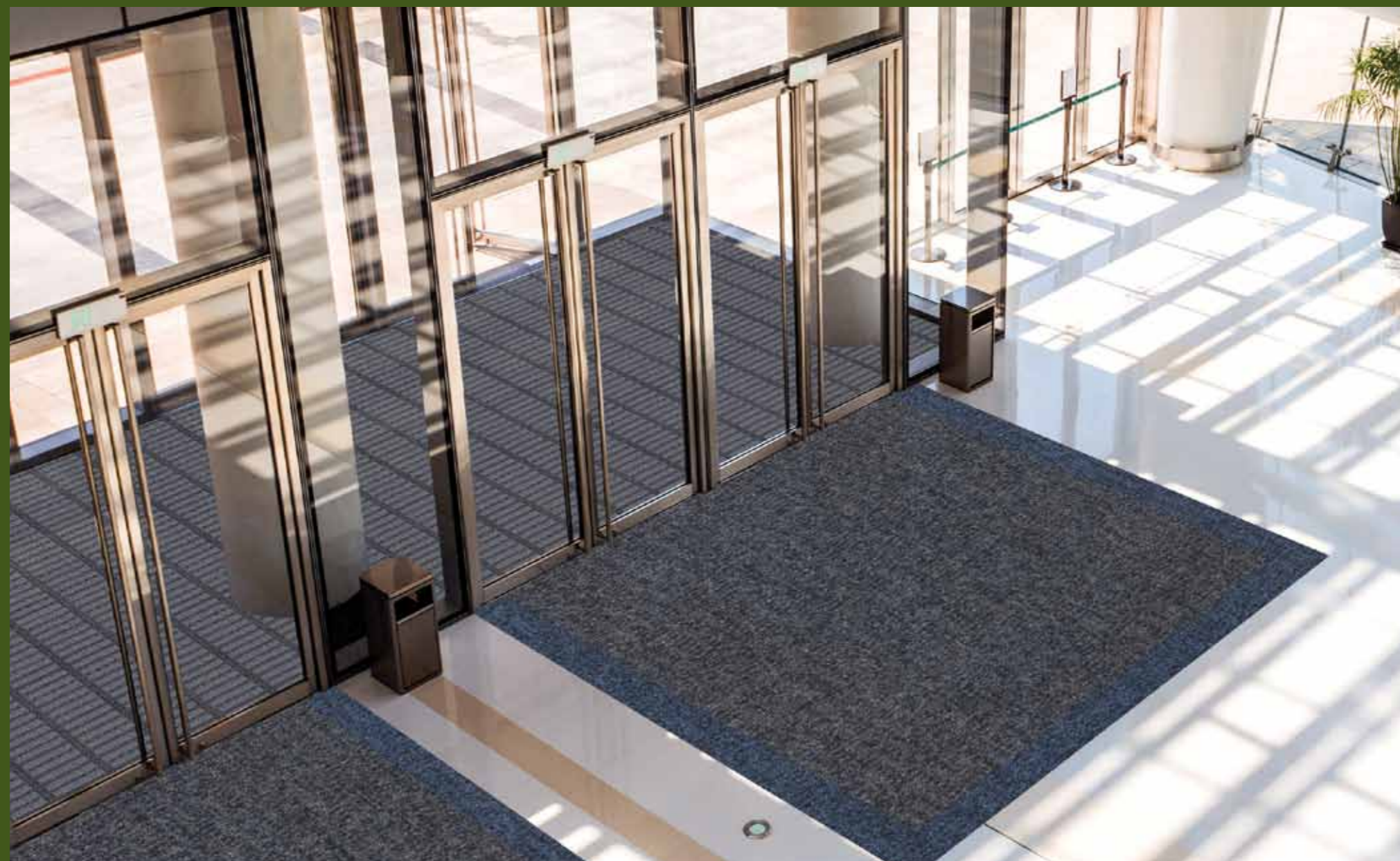


SAR114 Venus



SAR169 Mars





# OBEX TEXTILE ROLL GOODS

## SECTION CONTENTS

FORIS	P18-19
REGIA DUO	P20
REGIA	P21
ANSA	P22
VIA	P23





## FORIS - ZONE 2 & 3



### SUSTAINABLE PERFORMANCE

The unsurpassed functionality of **Foris** is a result of the Milliken expertise in constructing textiles to achieve best market performance.

**Foris** combines two types of high resilience polyamide fibres: mono-filaments for the brushing action and multi-filaments for the absorption effect, twisted together and heat set before the tufting process begins. The open tufting construction provides room for dirt storage, whilst allowing easy dirt release during maintenance.

This unique textile is manufactured with ECONYL® fibres which are 100% regenerated polyamide sourced from post-industrial and post-consumer waste, making **Foris** a sustainable solution with commitment to respecting the environment.

### DESIGN AND COLOURS

**Foris** is offered in a choice of contemporary patterns and in a large range of colours for perfect coordination with the interior design of both commercial and public buildings.

### BACKING OPTIONS

**Foris** rolls come with a high quality impervious vinyl backing, which is easy to install when fitted wall to wall or simple to cut to the desired length to produce runners.

Rubber backed mats in standard or special sizes are also available for a superior solution as free standing products on the floor, with a choice of smooth finish for hard floors or Gripper® backing for carpeted or structured floors. These mats are fully washable.

See pages 28-29 for Foris Pattern Mats



## FORIS - ZONE 2 & 3



### Galaxy



GXY7711 Jupiter GXY7712 Moon GXY7713 Uranus GXY7714 Neptune GXY7715 Earth GXY7716 Mercury



GXY7717 Venus GXY7718 Mars GXY7719 Emerald GXY7720 Ruby GXY7721 Amethyst GXY7722 Diamond

### Star



SAR7711 Jupiter SAR7712 Moon SAR7713 Uranus SAR7715 Earth SAR7716 Mercury SAR7718 Mars

**ECONYL®**  
Made with 100% Regenerated Nylon





## REGIA DUO - ZONE 2



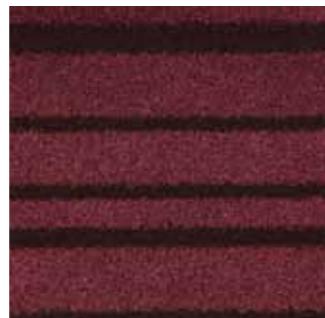
The **Regia** and **Regia Duo** product concept is designed to work as a comprehensive matting solution for combined applications in entrances and circulation areas, with a unique duo scraper textile made of 100% regenerated ECONYL® polyamide fibres, fully colour coordinated.



7811 Mouse Grey



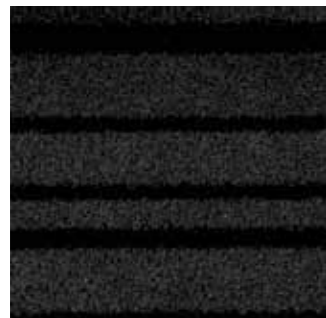
7831 Chestnut Brown



7851 Carmine Red

**Regia Duo** offers superior performance as a primary barrier, catching dirt and moisture thanks to a specially tufted pattern with rows of high twist and heat set polyamide dual fibres, combined with rows of monofilament yarns for heavy scraping effect on shoe soles.

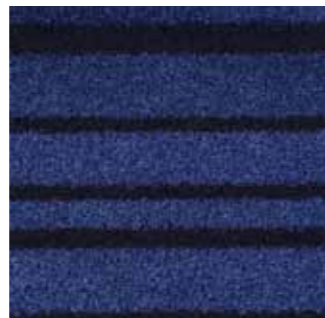
As a highly functional textile matting, it can be the preferred choice when a limited area is available in the building entrance.



7801 Tar Anthracite



7821 Cocoa Brown



7841 Sapphire Blue



## REGIA - ZONE 2 & 3



**Regia** textile is manufactured with high twist and heat set dual fibres (combined mono and multi filaments from BCF polyamide ECONYL® yarns) tufted in an open construction to allow optimum functionality at collecting dirt and moisture and releasing that content during maintenance.



7810 Mouse Grey



7830 Chestnut Brown



7850 Carmine Red



7800 Tar Anthracite



7820 Cocoa Brown



7840 Sapphire Blue





## ANSA - ZONE 2 & 3



The **Ansa** product line is designed to work as a high performance matting solution for applications in entrances and circulation areas, with a unique loop pile textile construction made of ECONYL® polyamide fibres.

### UNIQUE TEXTILE CONSTRUCTION

**Ansa** offers superior functionality as a primary barrier (zone 2) and/or secondary matting (zone 3) in catching dirt and moisture thanks to a specially tufted loop textile pattern made of 100% regenerated polyamide dual fibres. The first type of yarn is a high denier multi-filament designed to capture moisture from footfalls (and wheeled traffic in shopping centres or airports).



7560 Concrete Grey



7550 Conker Brown



7590 Cherry Red

The second type of yarn is a strong mono-filament that acts as a scraper for capturing dirt particles. This yarn combination provides optimum functionality for collecting dirt and moisture and the textile construction facilitates soil release during maintenance

### INNOVATIVE BACKING TECHNOLOGY

The backing is 100% PVC free, made of impervious foamed polyurethane for lighter weight construction and sustainable performance.



7540 Charcoal Black



7580 Cannon Greyish Blue



7570 Azure Blue



## VIA - ZONE 2 & 3



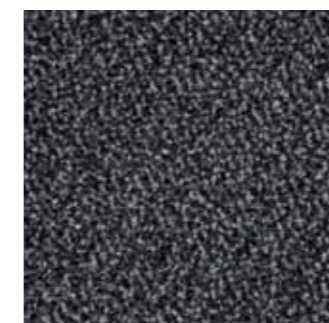
The **Via** product line has been specially designed with a highly functional textile construction to absorb moisture and also scrape dirt with its BCF polyamide dual fibres.

**Via** is offered in rolls with a phthalate free backing. Rolls can be cut and fitted in entrances or circulation areas.

The wear resistance is classified as 33 which makes the product suitable for high traffic areas and heavy commercial use.



7201 Carbon Black



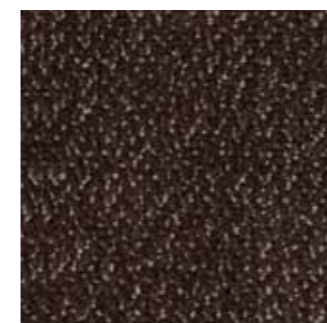
7202 Graphite Grey



7203 Slate Grey



7208 Ruby Red



7207 Chocolate Brown



7206 Coffee Brown



7205 Midnight Blue



7204 Navy Blue





## TEXTILE MATS

### SECTION CONTENTS

HEAVY DUTY SCRAPER	P26
CERO PLUS	P27
FORIS PATTERN MATS	P28-29
WOM ORIGINAL	P30
WOM PLUS	P31
WOM UNICOLOUR	P31
COLOUR SYMPHONY HD	P32-33
MATVERTISER	P33



## TEXTILE MATS - RUBBER BACKING OPTIONS

All our textile mats are manufactured with a high quality rubber backing, with a flat back option for great stability on hard floors and a Gripper® backing solution specially designed for carpeted floors.

For areas with high footfall and wheeled traffic, such as food stores, shopping centres and airports, the Megahold™ backing featuring moulded suction cups is a recommended choice for improved stability.

There is also a 3mm rubber thickness available for specific applications such as fitting in mat wells or size applications where Megahold™ standard sizes are not suitable.

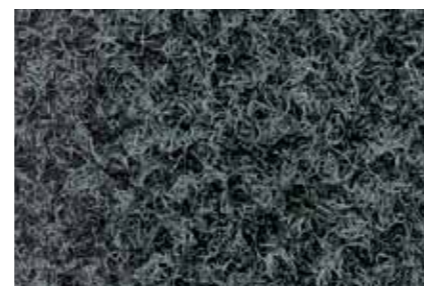


## HEAVY DUTY SCRAPER - SOLUTION DYED TEXTILE SCRAPER MATS FOR OUTDOORS



Manufactured specifically for heavy duty and outdoor applications, the **Heavy Duty Scraper** mat acts as a tough first line of defence in all weather conditions. Its hard wearing construction - made of strong solution dyed mono filament yarns - removes excessive dirt and moisture, such as heavy deposits of mud, snow, sand and grit. This unique textile provides a stiff scraping action to capture the heavy dirt particles which the deep pile traps and conceals.

The Solution Dyed Nylon fibres are UV resistant, meaning that they are extremely colourfast - even when regularly exposed to strong sunlight. Rigorous tests simulating the worst possible weather conditions have confirmed the extraordinary durability of this unique product. The mats are available in a functional dark grey colour.



## CERO PLUS - SOLUTION DYED TEXTILE SCRAPER MATS



Loose laid mat on carpeted floor - Gripper® backing recommended

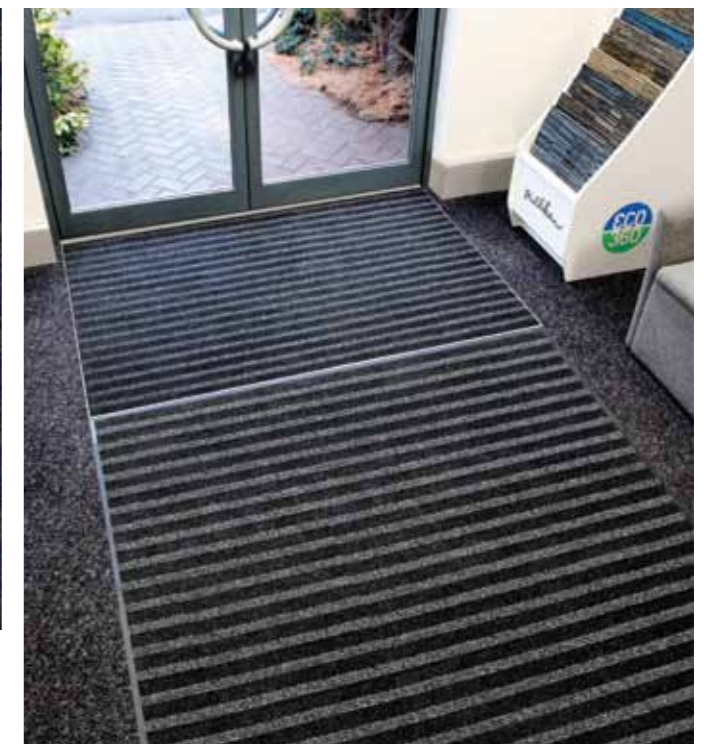
ZONE 2

The **Cero Plus** range consists of textile mats tufted from successive rows of ECONYL® solution dyed polyamide fibres.

The monofilament fibres work as tough scrapers, combined with a high twist and heat set bicolour multifilament yarn which is designed for dirt and moisture absorption. The mats are available in a functional dark grey and blue colour.

Its unique pile construction, combined with a long-lasting vinyl or rubber backing offers superior performance in terms of function and long-term appearance retention. The audible presence of the monofilament scrapers encourages people to wipe their feet over the mat, which further increases the functionality of the product.

Also available in rolls. Available in Grey and Blue options





## FORIS PATTERN MATS - ZONE 2 & 3



**Foris** rubber backed pattern mats are available in the 'Cubic' pattern, as well as the 'Star' and 'Galaxy' patterns (see page 19). These fully washable mats can be ordered in standard or special sizes with a choice of smooth backing for hard floors or Gripper® for applications on structured floors such as carpet for optimal stability. They feature long lasting rubber borders. The high performance ECONYL® textile makes **Foris** a sustainable solution with commitment to respecting the environment.

### Cubic



Cubic Black 7750



Cubic Grey 7760



Cubic Blue 7770



Cubic Brown 7780

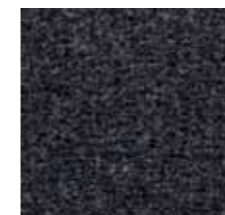


Cubic Red 7790

## FORIS PATTERN MATS - ZONE 2 & 3



### Galaxy



GXY7711 Jupiter



GXY7712 Moon



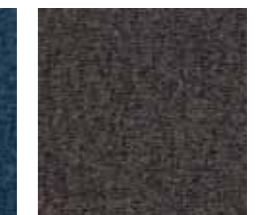
GXY7713 Uranus



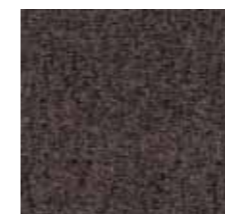
GXY7714 Neptune



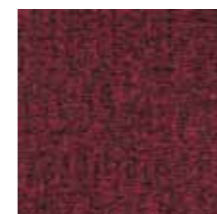
GXY7715 Earth



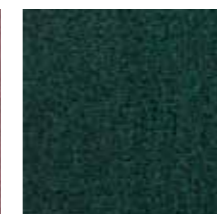
GXY7716 Mercury



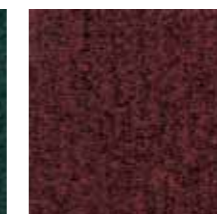
GXY7717 Venus



GXY7718 Mars



GXY7719 Emerald



GXY7720 Ruby



GXY7721 Amethyst



GXY7722 Diamond

### Star



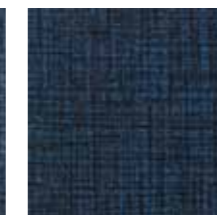
SAR7711 Jupiter



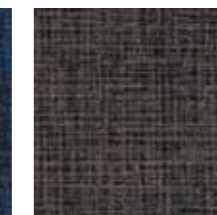
SAR7712 Moon



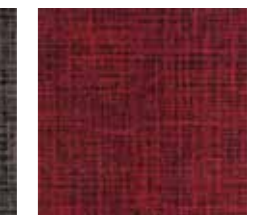
SAR7713 Uranus



SAR7715 Earth



SAR7716 Mercury



SAR7718 Mars

**ECONYL®**  
Made with 100% Regenerated Nylon



## WOM ORIGINAL - SOLUTION DYED TEXTILE MATS



The **WOM Original** range consists of textile mats tufted from a high twist and heat set bi-colour nylon yarn, and comes in 10 contemporary colours to fit all interior design styles. WOM Mats are specially designed to pick up dirt and moisture in heavy traffic areas and buildings where a high level of cleanliness is critical.

### COLOUR RANGE

Textile mats tufted from a high twist bi-colour nylon yarn.



## WOM PLUS - SOLUTION DYED TEXTILE MATS



### COLOUR RANGE

Textile mats tufted using three colours of high twist nylon yarn.



The **WOM Plus** range consists of textile mats made of high twist and heat set nylon yarns. Constructed using swinging needle tuft method to achieve its luxurious look, it comes in 12 contemporary colours to fit all interior design styles.

## WOM UNICOLOUR - SOLUTION DYED TEXTILE MATS



### COLOUR RANGE

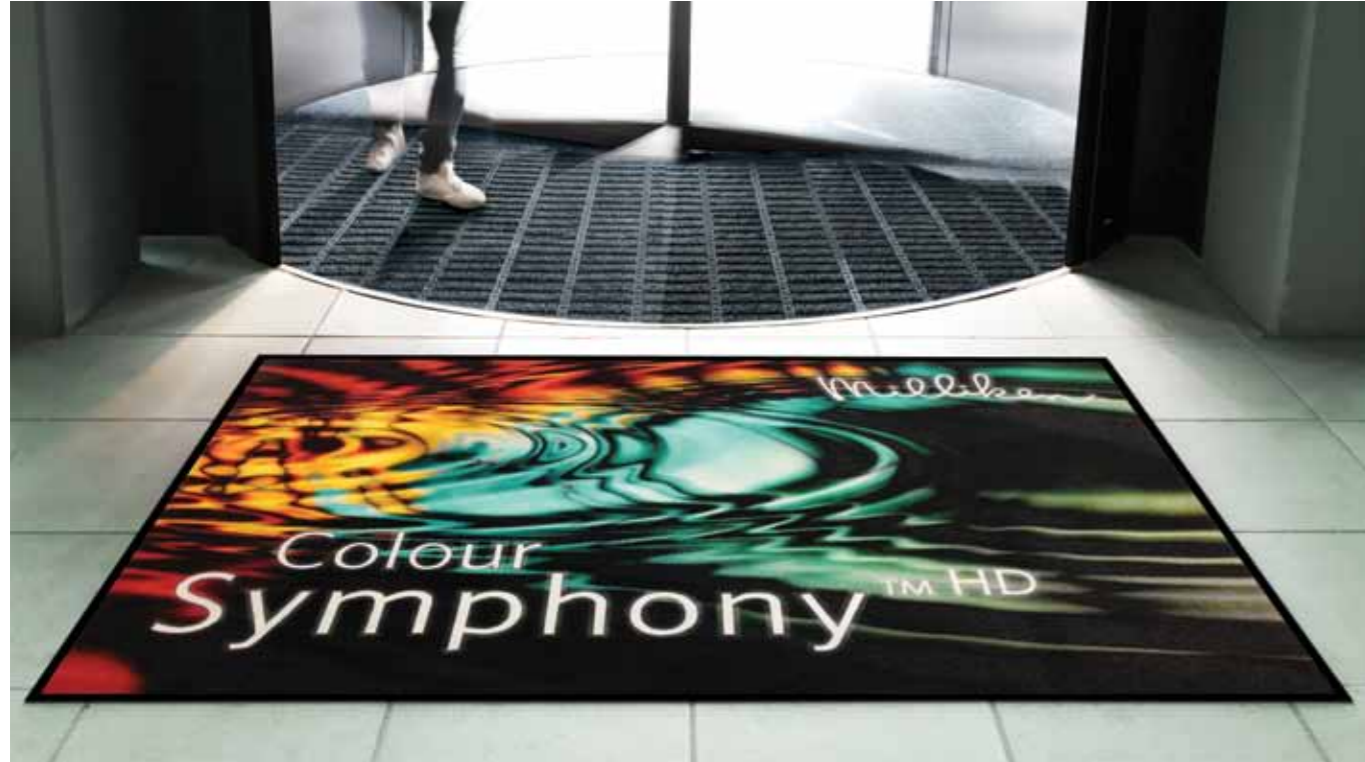
Choose from our most popular solution dyed nylon colours.



The **WOM Unicolour** range consists of textile mats made of high twist and heat set unicoloured nylon yarns. Tufted in a luxurious construction, it is available in 10 contemporary vibrant colours to fit all interior design styles.



## COLOUR SYMPHONY HD

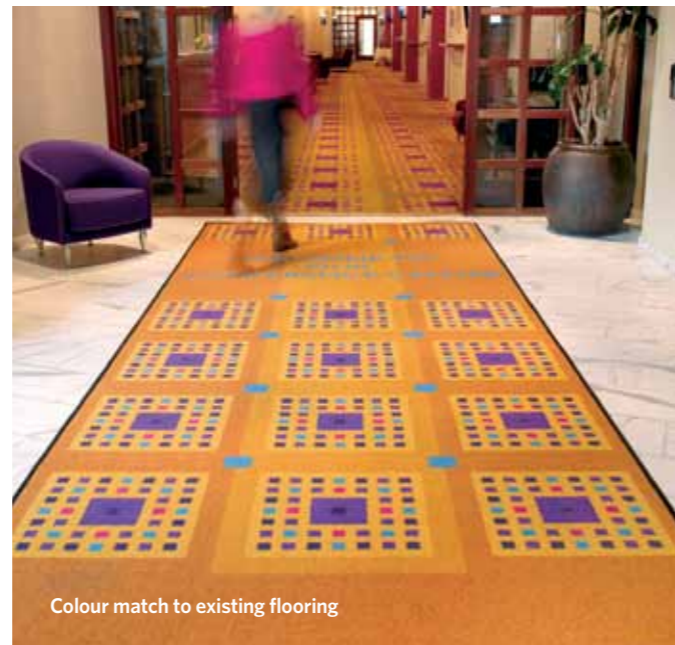


### LOGOMATS BEYOND YOUR IMAGINATION Corporate Image, Branding, Advertising and Functionality

Representing the most advanced dye injection technology available, Milliken's **Colour Symphony HD** logo mat system allows us to create high performance mats featuring beautiful patterns, photo-realistic images and logos.

#### COLOUR SYMPHONY HD OFFERS:

- A palette of 150 standard colours – to create even the most complex photo-realistic and logo designs as well as rich and saturated solid shades.
- Higher definition, clearer text and more realistic effects – **Colour Symphony HD** operates at 76 dots per inch allowing us to achieve greater clarity of design, finer text definition, shadowing, shading and 3D effects.



Colour match to existing flooring

## COLOUR SYMPHONY HD



### MATVERTISER

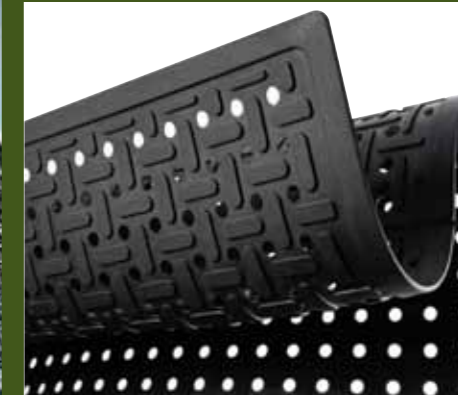
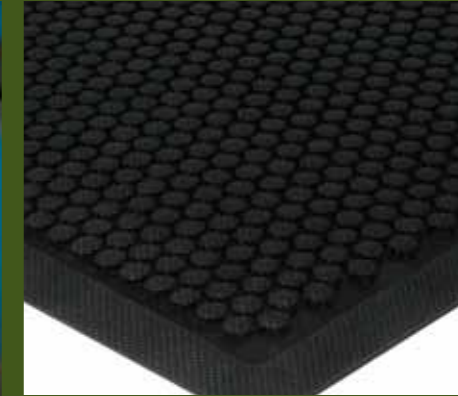


Matvertiser is a perfect solution for logo mats as well as message and advertising mats designed to promote a brand or an event.

They feature a high definition design clarity and colourful solutions to answer a very diversified market demand.

The tufted polyamide textile is great at wear resistance and functionality, and the rubber backing provides excellent floor stability in any indoor environment (Gripper® backing option available).





## RUBBER MATS

### SECTION CONTENTS

COMFORT	P36
ULTRAFLOW	P37



## COMFORT - ANTI-FATIGUE CONCEPT



Employees standing up all day in areas like check-out stations, service counters, assembly lines or behind bars need physical support to keep motivation and energy.

The Milliken anti-fatigue mat concept is specially designed for safety, comfort and protection in areas where people stand for prolonged periods.

Manufactured from premium quality nitrile rubber, **Comfort** mats are water resistant, resilient to impact and easy to clean on site by hosing or through industrial laundry process. They also resist oil and solvents, while reducing noise at work. These mats offer unique cushion and ergonomic properties and the patented rubber construction of **Comfort** mats has been tested and approved by the American Podiatric Medical Association (APMA).



### COMFORT MAT BENEFITS

- Smart trade off between support and thickness
- APMA approved
- Reduces leg fatigue and noise
- Anti-static properties
- Impervious to chemicals and oil based products
- Industrially washable in a laundry or hosed down on site



## ULTRAFLOW - WET AREA MATTING



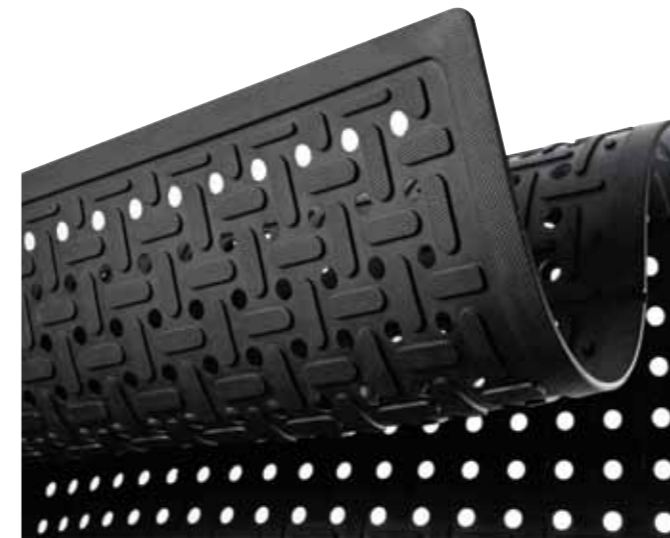
The **UltraFlow** mat will provide comfort to your feet, legs, and back. Specially designed for use in wet areas. The durable surface texture and design helps to prevent slipping, while the studded pattern on the bottom permits drainage and air circulation.

### DURABLE AND SAFE

**UltraFlow** is easy to clean with a pressure hose and is durable enough to withstand industrial laundry systems without damage. The durable construction of the UltraFlow mat will provide cushioning, comfort and safety for years to come.

### DEVELOPED FOR PERFORMANCE

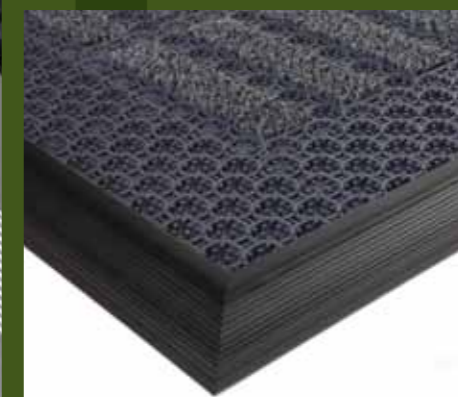
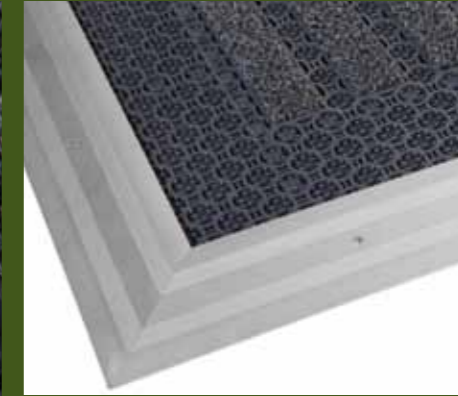
The **UltraFlow** mat was developed to provide premium performance in kitchens, bars, freezers and food processing areas - to name just a few. The mat is produced using a patented nitrile rubber construction with anti-bacterial properties, which provides a unique flow through design. It is oil and solvent resistant.



The open product structure provides remarkable drainage properties.







# OBEX ACCESSORIES AND TECHNICAL INFORMATION

## SECTION CONTENTS

PERFORMANCE	P40
INSTALLATION	P41
EDGING SYSTEMS	P42
CLEANING	P43
TECHNICAL SPECIFICATIONS	P44-50

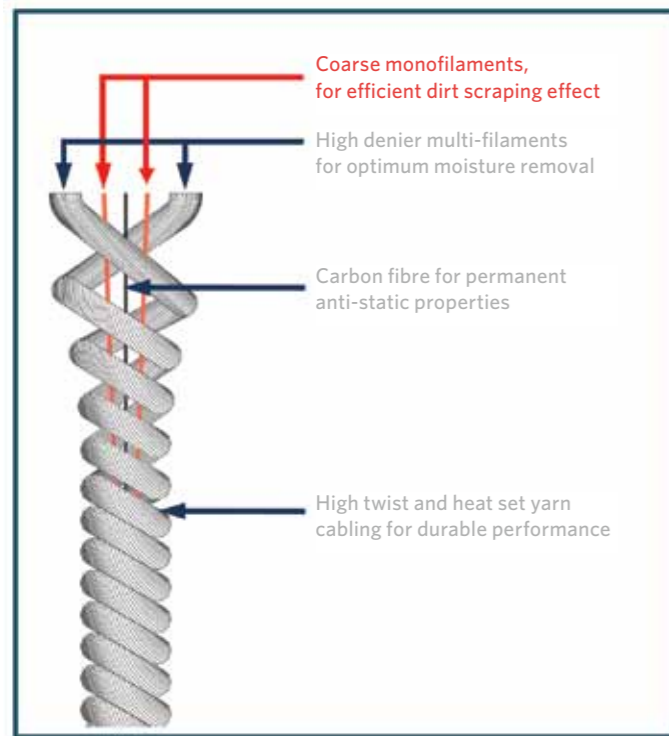


## PERFORMANCE

Why does OBEX textile offer the best market performance in catching and hiding dirt and moisture?

1. Polyamide dual fibres are twisted and heat set in a tight combination to offer the best compression and abrasion resistance against foot and wheeled traffic.
2. The most appropriate tufting technique is chosen to create an open textile construction

## POLYAMIDE YARN CONSTRUCTION

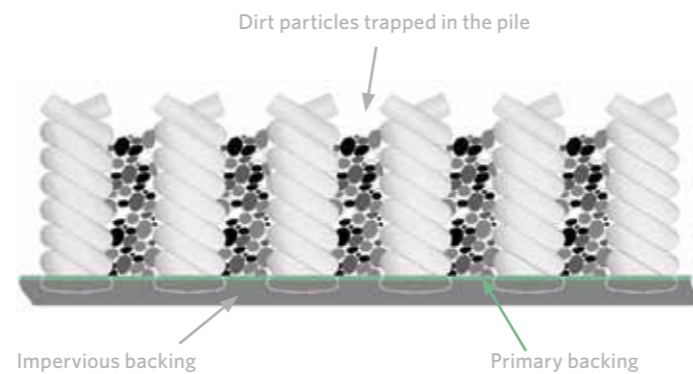


## OPEN TEXTILE CONSTRUCTION

The open textile construction will trap soil and moisture, while allowing easy release during maintenance.

The dual fibre ECONYL® polyamide yarn is extremely durable with proper maintenance.

The high quality impervious backing will block soil and moisture in the textile layer for easy removal.



## INSTALLATION



Tergo pre-assembled in 6 tile units



Quick to assemble with a hammer



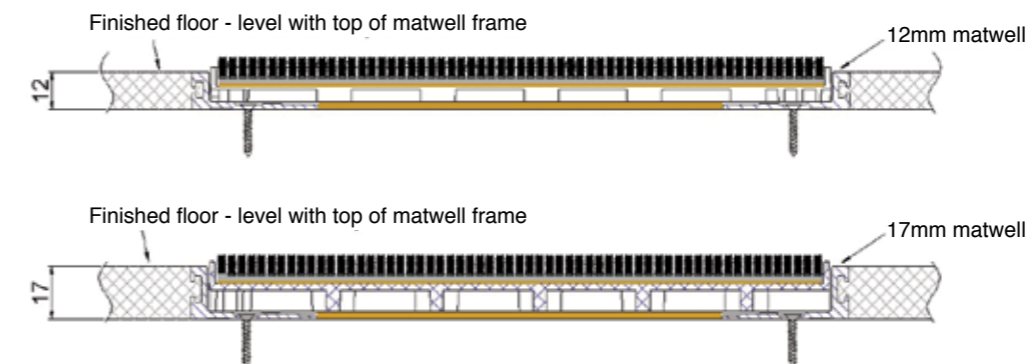
Easy to cut



Finished Installation

## INSTALLATION OPTIONS

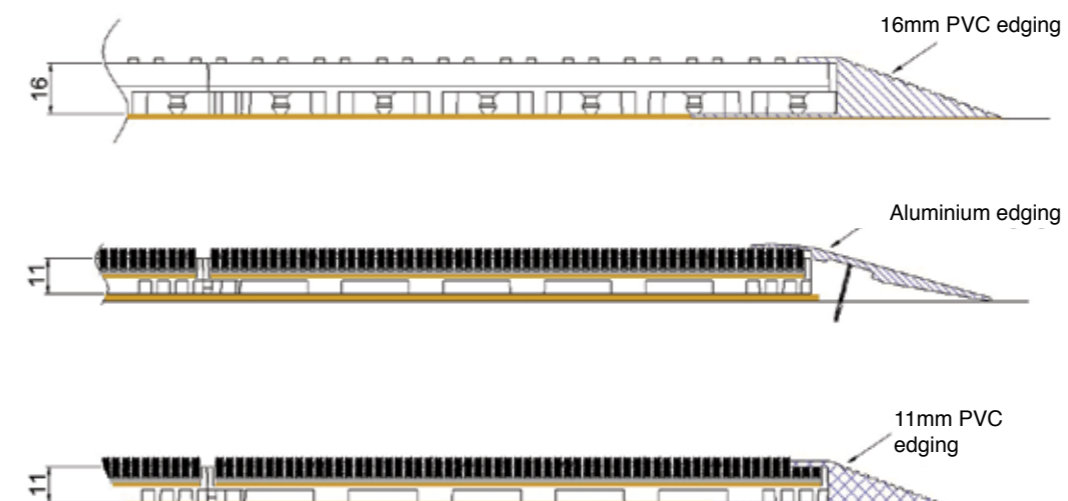
### Installation in matwells or recessed areas



Indoor installation:  
Forma or Tergo 11mm  
Closed Recessed  
in a 12mm matwell.

Indoor installation:  
Forma or Tergo 16mm  
Closed Recessed  
in 17mm matwell.

### Surface-mounted installation with edging system



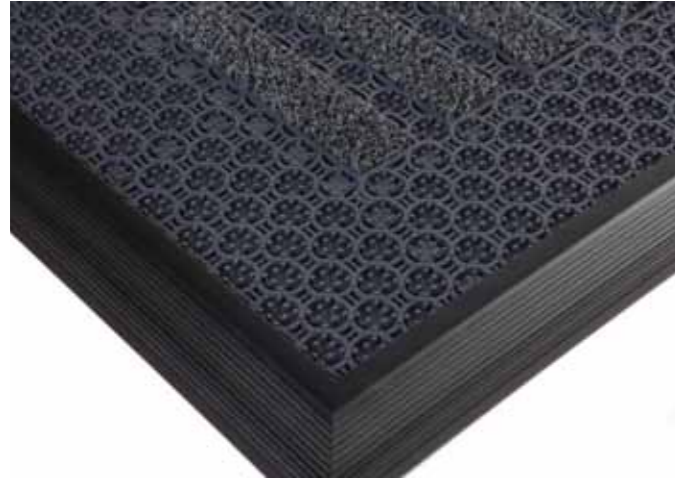
Outdoor installation:  
Prior or Tergo 16mm  
Open - Surface mounted  
with PVC edging.

Indoor installation:  
Forma or Tergo 11mm  
Closed - Surface mounted  
with Aluminium edging.

Indoor installation:  
Forma or Tergo 11mm  
Closed - Surface mounted  
with PVC edging.



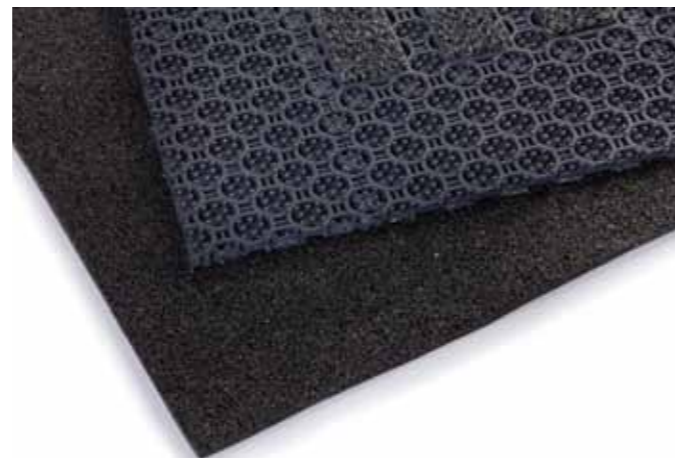
## EDGING SYSTEMS



**PVC EDGING** Available in 11mm and 16mm thickness and 2 metre lengths



**ALUMINIUM EDGING** Available in 11mm thickness and 2.7 metre lengths



**ECOFLEX UNDERLAY** Easy to use for matwell depth compensation

## CLEANING

Daily vacuuming and periodic deep cleaning with hot water extraction is recommended. Deep cleaning should be performed when soiling pattern becomes visible.



BEFORE

AFTER



Water extraction cleaner



Add clean water



And detergent



Water mixed with detergent penetrates the textile to catch soiling and is immediately extracted, leaving minimum moisture that will quickly dry out. The dirt is collected in the machine tank.



**OBEX Accessories and Technical Information**

PRODUCT INFORMATION	PRIOR 11C	PRIOR 16	PRIOR 16C
Product construction	Modular Scraper Tile	Modular Scraper Tile	Modular Scraper Tile
Product material	UV resistant PVC	UV resistant PVC	UV resistant PVC
Product structure	Closed	Open	Closed
Total thickness	11mm	16mm	16mm
Total weight	6,470g/m <sup>2</sup> (+/-5%)	8,180g/m <sup>2</sup> (+/-5%)	10,790g/m <sup>2</sup> (+/-5%)
Flammability	Low radius of effect (BS 4790)	Low radius of effect (BS 4790)	Low radius of effect (BS 4790)
Wear resistance	Pass at 22,000 cycles	Pass at 66,000 cycles	Pass at 66,000 cycles
Temperature resistance	from -30°C to +50°C	from -30°C to +50°C	from -30°C to +50°C
Tile size in mm	Nominal 200 x 200mm - Usable 195 x 195mm when installed		

PRODUCT INFORMATION	TERGO 11C	TERGO 16	TERGO 16C
Product construction	Modular Scraper Tile	Modular Scraper Tile	Modular Scraper Tile
Product material	Modular tile with tufted cut pile textile inserts manufactured with twisted and heat set polyamide monofilaments, bonded in UV resistant PVC tile carrier		
Product structure	Closed	Open	Closed
Total thickness	11mm	16mm	16mm
Total weight	7,970g/m <sup>2</sup> (+/-5%)	10,280g/m <sup>2</sup> (+/-5%)	11,600g/m <sup>2</sup> (+/-5%)
Textile construction	100% ECONYL® regenerated solution dyed polyamide twisted and heat set monofilament		
Pile height	13mm	13mm	13mm
Total fabric weight	1,020g/m <sup>2</sup>	1,020g/m <sup>2</sup>	1,020g/m <sup>2</sup>
Flammability	Low radius of effect (BS 4790)	Low radius of effect (BS 4790)	Low radius of effect (BS 4790)
Tile size in mm	Nominal 200 x 200mm - Usable 195 x 195mm when installed		

PRODUCT INFORMATION	FORMA 11C	FORMA 16	FORMA 16C
Product construction	Modular Scraper Tile	Modular Scraper Tile	Modular Scraper Tile
Product material	Modular tile with tufted cut pile textile inserts manufactured with twisted and heat set dual polyamide 6,6 fibres, bonded in UV resistant PVC tile carrier		
Product structure	Closed	Open	Closed
Total thickness	11mm	16mm	16mm
Total weight	7,990g/m <sup>2</sup> (+/-5%)	10,310g/m <sup>2</sup> (+/-5%)	11,630g/m <sup>2</sup> (+/-5%)
Textile construction	100% polyamide BCF, twisted and heat set multi and monofilament dual fibres		
Pile height	6.75mm	6.75mm	6.75mm
Total fabric weight	1,075g/m <sup>2</sup>	1,075g/m <sup>2</sup>	1,075g/m <sup>2</sup>
Flammability	Low radius of effect (BS 4790)	Low radius of effect (BS 4790)	Low radius of effect (BS 4790)
Wear resistance	Pass at 22,000 cycles	Pass at 66,000 cycles	Pass at 66,000 cycles
Tile size in mm	Nominal 200 x 200mm - Usable 195 x 195mm when installed		

ADA / BS 8300 / ISO 21542 Compliant	Yes
LEED® Point Contributor	Yes
ISO Manufacturing Certification	ISO 9001
ISO Environmental Certification	ISO 14001
Warranty	Please refer to our written warranty

**Please Note:** As each customer's use of our product may be different, information we provide, including without limitation, recommendations, test results, samples, care/labelling/processing instructions or marketing advice, is provided in good faith but without warranty and without accepting any responsibility/liability. Each customer must test and be responsible for its own specific use, further processing, labelling, marketing, etc. All sales are exclusively subject to our standard terms of sales posted at [www.milliken.com/terms](http://www.milliken.com/terms) (all additional/different terms are rejected) unless explicitly agreed otherwise in a signed writing.

**OBEX Accessories and Technical Information**

PRODUCT INFORMATION	QUADRUS
Product construction	Modular textile tile with tufted cut pile manufactured with twisted and heat set polyamide dual fibres
Wear resistance	Class 32 - suitable for high foot traffic
Fire resistance	Cfl-s1
Total thickness	Approx. 12mm
Total weight	4,600g/m <sup>2</sup> (+/-5%)
Yarn composition	100% ECONYL® regenerated polyamide BCF, twisted and heat set dual fibres - multi and monofilaments
Pile height	6.4mm
Total fabric weight	1,100g/m <sup>2</sup>
Backing type	90% recycled open cell polyurethane cushion backing (6mm)
Tile size in cm	45.72cm x 45.72cm

PRODUCT INFORMATION	FORIS ROLLS
Product construction	Tufted cut pile manufactured with twisted and heat set polyamide dual fibres
Wear resistance	Class 32 - suitable for high foot traffic
Fire resistance	Cfl-s1
Total thickness	Approx. 10mm
Total weight	3,530g/m <sup>2</sup> (+/-5%)
Yarn composition	100% ECONYL® regenerated polyamide BCF, twisted and heat set dual fibres - multi and monofilaments
Pile height	7.3mm
Total fabric weight	1,100g/m <sup>2</sup>
Backing type	PVC
Roll sizes in cm	135 x 2500 / 200 x 2500

PRODUCT INFORMATION	REGIA	REGIA DUO
Product construction	Tufted cut pile manufactured with twisted and heat set polyamide dual fibres	Tufted cut pile manufactured with twisted and heat set polyamide dual fibres with alternating rows of monofilament
Wear resistance	Class 33 - suitable for high foot traffic	
Fire resistance	Cfl-s1	Cfl-s1
Total thickness	Approx. 9mm	Approx. 9mm
Total weight	3,550g/m <sup>2</sup> (+/-5%)	3,550g/m <sup>2</sup> (+/-5%)
Yarn composition	100% ECONYL® regenerated BCF solution dyed polyamide twisted and heat set multi and monofilaments	
Pile height	6.4mm	6.3mm
Total fabric weight	1,100g/m <sup>2</sup>	1,100g/m <sup>2</sup>
Backing type	100% Phthalate free PVC	100% Phthalate free PVC

ADA / BS 8300 / ISO 21542 Compliant	Yes
LEED® Point Contributor	Yes
ISO Manufacturing Certification	ISO 9001
ISO Environmental Certification	ISO 14001
Origin	EU
Warranty	Please refer to our written warranty

**Please Note:** As each customer's use of our product may be different, information we provide, including without limitation, recommendations, test results, samples, care/labelling/processing instructions or marketing advice, is provided in good faith but without warranty and without accepting any responsibility/liability. Each customer must test and be responsible for its own specific use, further processing, labelling, marketing, etc. All sales are exclusively subject to our standard terms of sales posted at [www.milliken.com/terms](http://www.milliken.com/terms) (all additional/different terms are rejected) unless explicitly agreed otherwise in a signed writing.



PRODUCT INFORMATION	ANSA
Product construction	Tufted loop pile manufactured with twisted and heat set polyamide dual fibres
Wear resistance	Class 32 - suitable for high foot traffic
Fire resistance	Cfl-s1
Total thickness	Approx. 10mm
Total weight	2,975g/m <sup>2</sup> (+/-5%)
Yarn composition	100% ECONYL® regenerated BCF solution dyed polyamide twisted and heat set multi and monofilaments
Pile height	6.1mm
Total fabric weight	1,000g/m <sup>2</sup>
Roll sizes in cm	135 x 2500 / 200 x 2500

PRODUCT INFORMATION	VIA
Product construction	Tufted cut pile manufactured with polyamide dual fibres
Wear resistance	Class 33 - suitable for high foot traffic
Fire resistance	Cfl-s1
Total thickness	Approx. 9mm
Total weight	3,560g/m <sup>2</sup> (+/-5%)
Yarn composition	100% solution dyed polyamide BCF multi and monofilaments
Pile height	7.0mm
Total fabric weight	1,000g/m <sup>2</sup>
Roll sizes in cm	135 x 2500 / 200 x 2500

ADA / BS 8300 / ISO 21542 Compliant	Yes
LEED® Point Contributor	Yes
ISO Manufacturing Certification	ISO 9001
ISO Environmental Certification	ISO 14001
Origin	EU
Warranty	Please refer to our written warranty

**Please Note:** As each customer's use of our product may be different, information we provide, including without limitation, recommendations, test results, samples, care/labelling/processing instructions or marketing advice, is provided in good faith but without warranty and without accepting any responsibility/liability. Each customer must test and be responsible for its own specific use, further processing, labelling, marketing, etc. All sales are exclusively subject to our standard terms of sales posted at [www.milliken.com/terms](http://www.milliken.com/terms) (all additional/different terms are rejected) unless explicitly agreed otherwise in a signed writing.

PRODUCT INFORMATION	COLOUR SYMPHONY HD LOGO MATS	COLOUR SYMPHONY HD MATS ON 3MM BACKING
Product construction	Tufted cut pile manufactured with twisted and heat set BCF polyamide 6,6 fibres	
Fire resistance	Cfl-s1	Cfl-s1
Total thickness	8mm	9mm
Total weight	2,720g/m <sup>2</sup> (+/-5%)	4,680g/m <sup>2</sup> (+/-5%)
Yarn composition	100% polyamide 6,6 BCF, twisted and heat set multifilaments	
Pile height	8.0mm	8.0mm
Total fabric weight	975g/m <sup>2</sup>	975g/m <sup>2</sup>
Backing type	n-Tec 100% Nitrile rubber	n-Tec 100% Nitrile rubber
Logo mat sizes in cm	85 x 60, 85 x 120, 85 x 150, 85 x 300, 115 x 180, 115 x 200, 115 x 240, 115 x 300, 150 x 200, 150 x 250, 150 x 300, 200 x 200, 200 x 300	

PRODUCT INFORMATION	MATVERTISER
Product construction	Tufted cut pile with polyamide 6,6 fibres
Total thickness	6mm
Total weight	1,910g/m <sup>2</sup> (+/-5%)
Yarn composition	100% polyamide 6,6
Pile height	5.5mm
Total fabric weight	590g/m <sup>2</sup>
Backing type	n-Tec 100% Nitrile rubber
Mat sizes in cm	85 x 60, 85 x 120, 85 x 150, 85 x 300, 115 x 180, 115 x 200, 115 x 240, 115 x 300, 150 x 250, 150 x 300, 200 x 200, 200 x 300

PRODUCT INFORMATION	FORIS MATS
Product construction	Tufted cut pile manufactured with twisted and heat set polyamide dual fibres
Total thickness	8mm
Total weight	3,120g/m <sup>2</sup> (+/-5%)
Yarn composition	100% ECONYL® regenerated polyamide BCF, twisted and heat set dual fibres - multi and monofilaments
Pile height	7.3mm
Total fabric weight	1,100g/m <sup>2</sup>
Backing type	n-Tec 100% Nitrile rubber
Mat sizes in cm	85 x 60, 85 x 120, 85 x 150, 85 x 200, 85 x 300, 115 x 180, 115 x 200, 115 x 240, 115 x 300, 200 x 200, 200 x 300

ADA / BS 8300 / ISO 21542 Compliant	Yes
LEED® Point Contributor	Yes
ISO Manufacturing Certification	ISO 9001
ISO Environmental Certification	ISO 14001
Origin	EU
Warranty	Please refer to our written warranty

**Please Note:** As each customer's use of our product may be different, information we provide, including without limitation, recommendations, test results, samples, care/labelling/processing instructions or marketing advice, is provided in good faith but without warranty and without accepting any responsibility/liability. Each customer must test and be responsible for its own specific use, further processing, labelling, marketing, etc. All sales are exclusively subject to our standard terms of sales posted at [www.milliken.com/terms](http://www.milliken.com/terms) (all additional/different terms are rejected) unless explicitly agreed otherwise in a signed writing.



**OBEX Accessories and Technical Information**

PRODUCT INFORMATION	WOM ORIGINAL
Product construction	Tufted cut pile manufactured with twisted and heat set BCF polyamide 6 fibres
Total thickness	9mm
Total weight	2,500g/m <sup>2</sup> (+/-5%)
Yarn composition	100% ECONYL® regenerated BCF polyamide twisted and heat set multifilaments
Pile height	10mm
Total fabric weight	740g/m <sup>2</sup>
Backing type	n-Tec 100% Nitrile Rubber - also available in 3mm backing

PRODUCT INFORMATION	WOM PLUS
Product construction	Tufted cut pile manufactured with twisted and heat set BCF polyamide 6 fibres
Total thickness	9mm
Total weight	2,500g/m <sup>2</sup> (+/-5%)
Yarn composition	100% ECONYL® regenerated BCF polyamide twisted and heat set multifilaments
Pile height	10mm
Total fabric weight	740g/m <sup>2</sup>
Backing type	n-Tec 100% Nitrile Rubber - also available in 3mm backing

PRODUCT INFORMATION	WOM UNICOLOUR
Product construction	Tufted cut pile manufactured with twisted and heat set BCF polyamide 6 fibres
Total thickness	9mm
Total weight	2,500g/m <sup>2</sup> (+/-5%)
Yarn composition	100% ECONYL® regenerated BCF polyamide twisted and heat set multifilaments
Pile height	10mm
Total fabric weight	740g/m <sup>2</sup>
Backing type	n-Tec 100% Nitrile Rubber - also available in 3mm backing

Sizes available in cm 85 x 60, 85 x 120, 85 x 150, 85 x 200, 85 x 300, 115 x 180, 115 x 200, 115 x 240, 115 x 300, 150 x 200, 150 x 250, 150 x 300, 200 x 200, 200 x 300

ADA / BS 8300 / ISO 21542 Compliant	Yes
LEED® Point Contributor	Yes
ISO Manufacturing Certification	ISO 9001
ISO Environmental Certification	ISO 14001
Origin	EU
Warranty	Please refer to our written warranty

**Please Note:** As each customer's use of our product may be different, information we provide, including without limitation, recommendations, test results, samples, care/labelling/processing instructions or marketing advice, is provided in good faith but without warranty and without accepting any responsibility/liability. Each customer must test and be responsible for its own specific use, further processing, labelling, marketing, etc. All sales are exclusively subject to our standard terms of sales posted at [www.milliken.com/terms](http://www.milliken.com/terms) (all additional/different terms are rejected) unless explicitly agreed otherwise in a signed writing.

**OBEX Accessories and Technical Information**

PRODUCT INFORMATION	CERO PLUS MATS	CERO PLUS ROLLS
Product construction	Tufted cut pile manufactured with twisted and heat set BCF polyamide 6 multifilament and monofilament strips	
Total thickness	8mm	8mm
Total weight	2,970g/m <sup>2</sup> (+/-5%)	3,270g/m <sup>2</sup> (+/-5%)
Yarn composition	100% ECONYL® regenerated BCF solution dyed polyamide, twisted and heat set multi - and monofilaments	
Pile height	9mm	9mm
Total fabric weight	770g/m <sup>2</sup>	770g/m <sup>2</sup>
Backing type	n-Tec 100% Nitrile Rubber	PVC
Sizes available in cm	<b>CERO PLUS MATS</b> 85 x 200, 115 x 200, 150 x 200, 200 x 200	<b>CERO PLUS ROLLS</b> 135 wide x 25m length 200 wide x 25m length

PRODUCT INFORMATION	COMFORT
Product construction	100% foamed nitrile rubber anti-fatigue mat
Total thickness	8.5mm
Total weight	3,100g/m <sup>2</sup> (+/-5%)
Composition	100% Nitrile Rubber
Size and weights (approx.)	84 x 60cm = 1560g, 84 x 297cm = 7730g, 84 x 139cm = 3620g, 119 x 178cm = 6570g

PRODUCT INFORMATION	ULTRAFLOW
Product construction	100% nitrile rubber mat
Total thickness	8mm
Total weight	4,230g/m <sup>2</sup> (+/-5%)
Composition	100% Nitrile Rubber
Size and weights (approx.)	84 x 136cm = 4830g

ADA / BS 8300 / ISO 21542 Compliant	Yes
LEED® Point Contributor	Yes
ISO Manufacturing Certification	ISO 9001
ISO Environmental Certification	ISO 14001
Origin	EU
Warranty	Please refer to our written warranty

**Please Note:** As each customer's use of our product may be different, information we provide, including without limitation, recommendations, test results, samples, care/labelling/processing instructions or marketing advice, is provided in good faith but without warranty and without accepting any responsibility/liability. Each customer must test and be responsible for its own specific use, further processing, labelling, marketing, etc. All sales are exclusively subject to our standard terms of sales posted at [www.milliken.com/terms](http://www.milliken.com/terms) (all additional/different terms are rejected) unless explicitly agreed otherwise in a signed writing.



**PRODUCT INFORMATION**

**HEAVY DUTY SCRAPER**

Product construction	Tufted cut pile manufactured with twisted and heat set BCF polyamide 6 monofilaments
Total thickness	10mm
Total weight	2,820g/m <sup>2</sup> (+/-5%)
Yarn composition	100% ECONYL® regenerated BCF polyamide twisted and heat set monofilaments
Total fabric weight	780g/m <sup>2</sup>
Backing type	n-Tec 100% Nitrile Rubber – also available in 3mm backing
Sizes available in cm	85 x 60, 85 x 120, 85 x 150, 85 x 200, 85 x 300, 115 x 180, 115 x 200, 115 x 240, 115 x 300

**PRODUCT INFORMATION**

**ECOFLEX UNDERLAY**

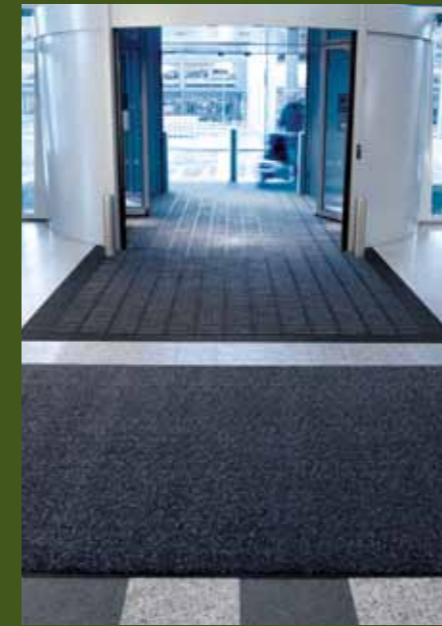
Product construction	Modular underlay manufactured using 100% recycled rubber
Total thickness	5mm
Total weight	2,720g/m <sup>2</sup> (+/-5%)
Tile size	40cm x 60cm

**EDGING OPTIONS**

PVC edging	11mm in 200cm length
PVC edging	16mm in 200cm length
Aluminium edging	11mm in 270cm length
Pre-mitred corner for aluminium edging	

ADA / BS 8300 / ISO 21542 Compliant	Yes
LEED® Point Contributor	Yes
ISO Manufacturing Certification	ISO 9001
ISO Environmental Certification	ISO 14001
Origin	EU
Warranty	Please refer to our written warranty

**Please Note:** As each customer's use of our product may be different, information we provide, including without limitation, recommendations, test results, samples, care/labelling/processing instructions or marketing advice, is provided in good faith but without warranty and without accepting any responsibility/liability. Each customer must test and be responsible for its own specific use, further processing, labelling, marketing, etc. All sales are exclusively subject to our standard terms of sales posted at [www.milliken.com/terms](http://www.milliken.com/terms) (all additional/different terms are rejected) unless explicitly agreed otherwise in a signed writing.





## Studios around the world



Clerkenwell, London



New York



Chicago



Shanghai

### Milliken - Europe, Africa, Middle East

Beech Hill Plant, Gidlow Lane,  
Wigan, WN6 8RN,  
United Kingdom  
T: +44 1942 612999  
F: +44 1942 612499  
Enquiries: matsinfoeurope@milliken.com  
Orders: matsorderseurope@milliken.com  
UK: Freephone: 0800 964 569

### Milliken - Asia, India, Australia, New Zealand

15th Floor, Building 2,  
1535 Hong Mei Road, Xuhui District,  
Shanghai, China 200233  
T: +8621 6145 5555  
F: +8621 6145 5558  
Enquiries & Orders:  
CustomerService.CH@milliken.com

### Milliken - Americas

920 Milliken Road,  
Spartanburg  
South Carolina 29303, USA  
T: 1.800.342.5539  
F: 706.880.5358  
Enquiries & Orders:  
mats.orders@Milliken.com