

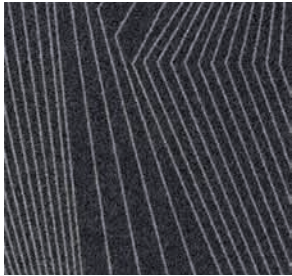
TOPOGRAPHY 2.0

Milliken



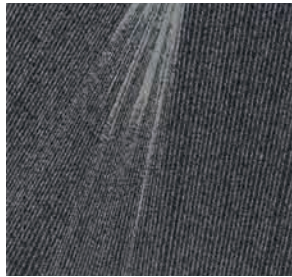
TOPOGRAPHY 2.0

EXPLORER design is the geometric abstraction of the organic contour lines within a topographical map. It is a modern take on an ageless cartographic medium that is both familiar and innovative.

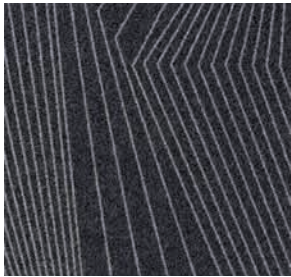


EXP144-119 BORDER

RELIEF design acts as both the antithesis and compliment to Explorer. Greater line density starts to create visual planes while emphasising the geometry and rhythm of Explorer.

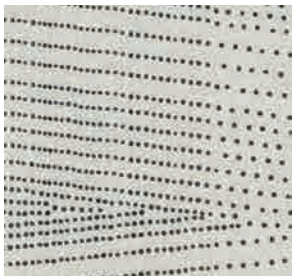


REF144-119 BORDER



EXP144-119 BORDER

NAVIGATOR design is based on a 3-dimensional point field map, Navigator used a series of pixel points to create plane and perspective within a single tile. A combination of tiles create a dynamic terrain comprised of tilting and shifting visual planes.



NAV119-219 BREAK-LINE



CUSTOM AREA TAG

REGIONS design shifts the scale and density of Navigator. What once felt like a textural abstraction of a 3-dimensional plan, now takes on its own unique surface quality.



NAV133-94 PLANS



REG133-94 PLANS



Parliamentary Library, Wellington, New Zealand | Pynenburg & Collins Architects | Photographer: Jason Mann
Explorer In Border (EXP144-119) and Relief in Border (REF144-119) | Monolithic Installation

MAPPING TOOLS

Topography - Explorer



Explorer in Border and Relief in Custom Colourways | Monolithic Installation



Explorer in Plans (EXP133-94) and Terrain (EXP218-145) | Brick (Horizontal) Installation





Explorer in Break-Line Custom Colourway | Monolithic Installation



EXP119-219 BREAK-LINE



CUSTOM WAYFINDING

MAPPING TOOLS

Topography - Relief



Explorer in Border (EXP144-119) and Relief in Border (REF114-119) | Monolithic Installation

Relief in Elevate | REF219-108 | Monolithic Installation



Relief in Break-Line | REF119-219 | Monolithic Installation

MAPPING TOOLS

Topography - Navigator



Navigator in Break-Line Custom Colouway | Monolithic Installation



Navigator in Elevate | NAV219-108 | Monolithic Installation



Left to Right: Navigator in Surfaces (NAV219-13) and Terrain (NAV218-145) | Monolithic Installation

MAPPING TOOLS

Topography - Regions



Navigator in Plans (NAV133-94) and Regions in Plans (REG133-94) | Monolithic Installation



Regions in Surfaces | REG219-131 | Monolithic Installation



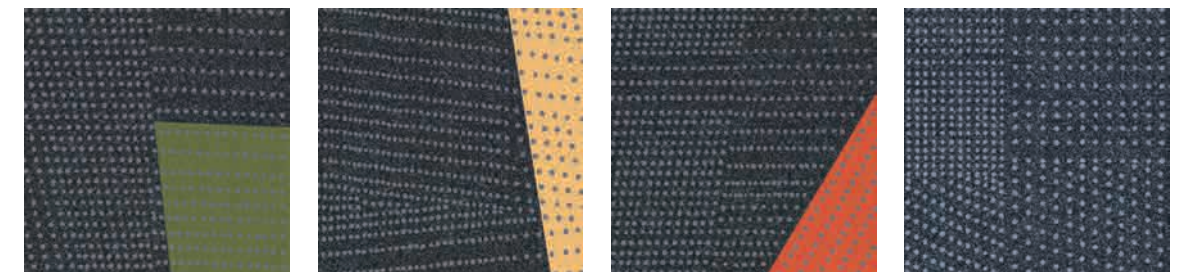
Regions in Break-Line (REG119-219) and Break-Line with Sun | Monolithic Installation



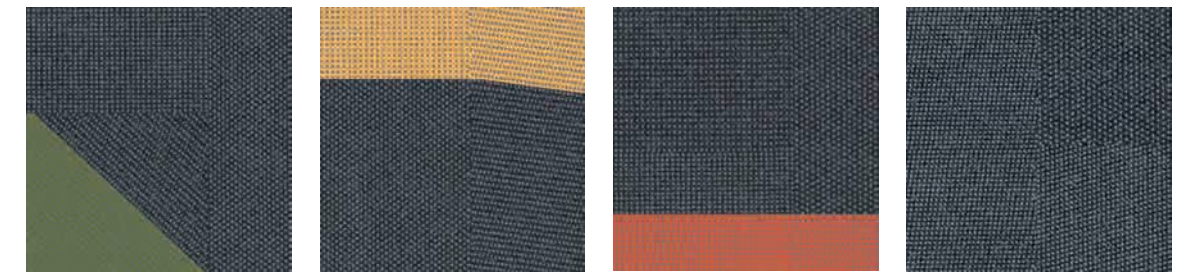
Navigator and Regions in Landform and Landform with Sun, Tangerine and Parrot | Monolithic Installation



Navigator and Regions in Landform and Landform with Sun, Tangerine and Parrot | Monolithic Installation

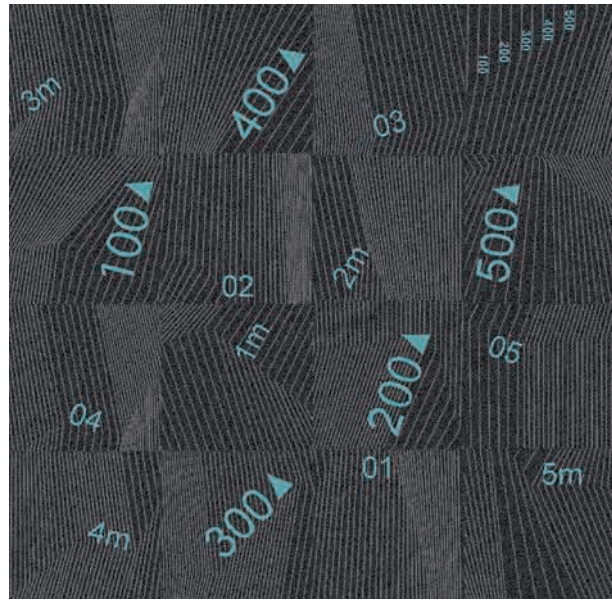


NAVZ202-153-118 LANDFORM WITH PARROT NAVZ231-153-118 LANDFORM WITH SUN NAVZ25-153-118 LANDFORM WITH TANGERINE NAV153-118 LANDFORM



REGZ202-153-118 LANDFORM WITH PARROT REGZ231-153-118 LANDFORM WITH SUN REGZ25-153-118 LANDFORM WITH TANGERINE REG153-118 LANDFORM

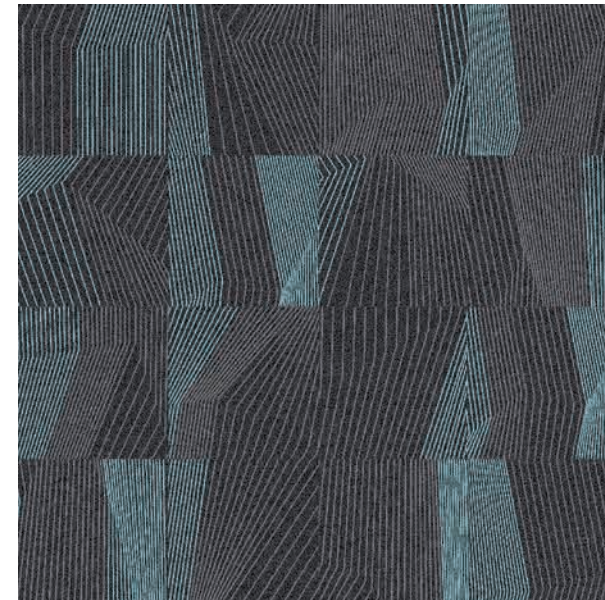
DRAWING TOOLS



Explorer - Navigate (Custom)



Explorer - Area Tag (Custom)

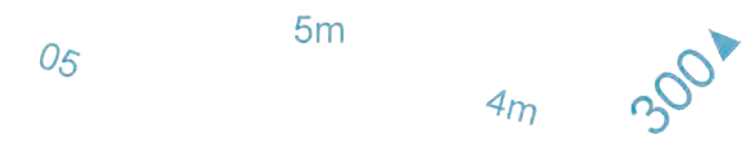


Explorer - Wayfinding



Explorer - Zones

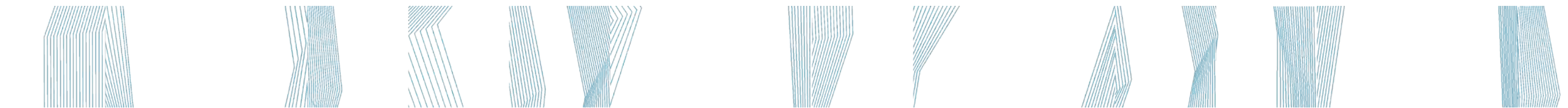
Symbols placement options:



Navigate: Number graphics (Custom)



Area Tag: Symbols (Custom)



Wayfinding: Accent Lines

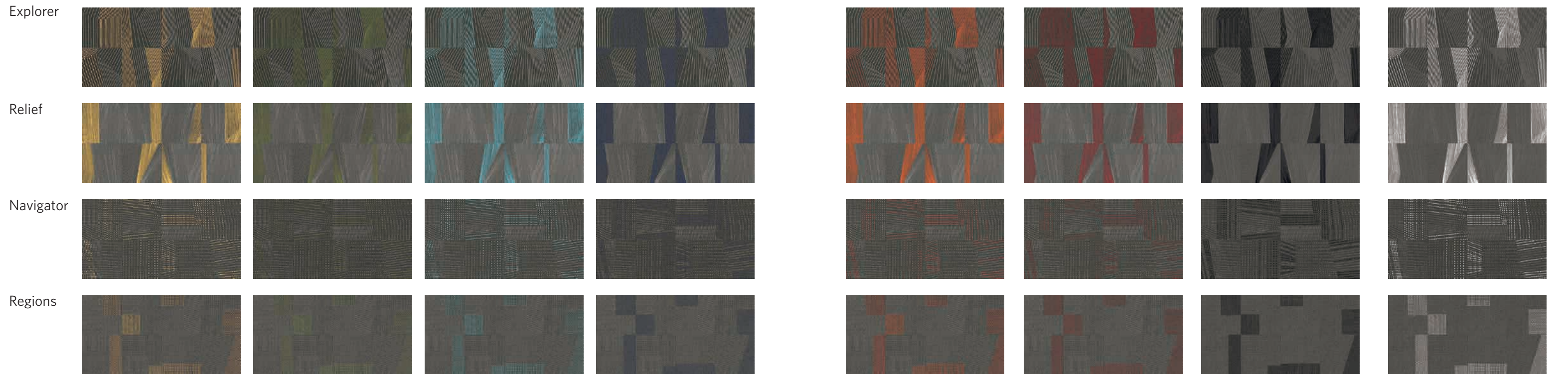


Zones: Accent Blocks

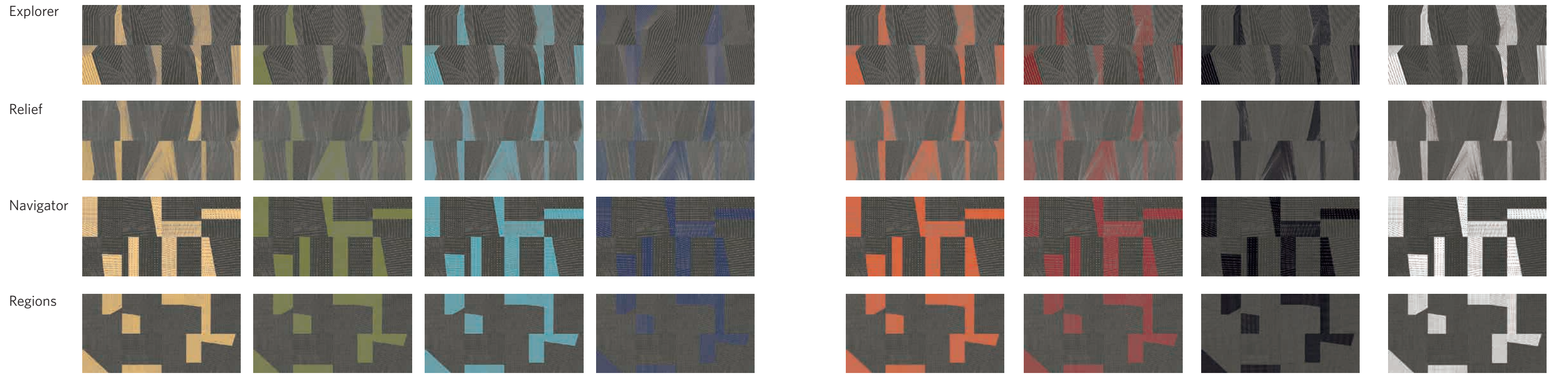
Symbols placement with Accent colour options



Wayfinding

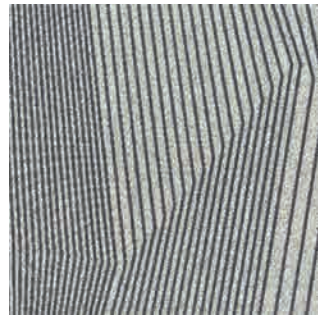


Zones

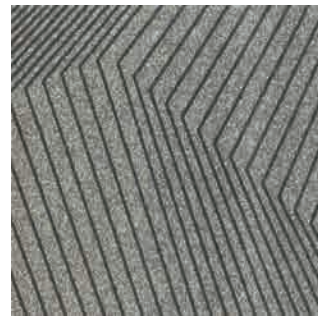


COLOURWAY

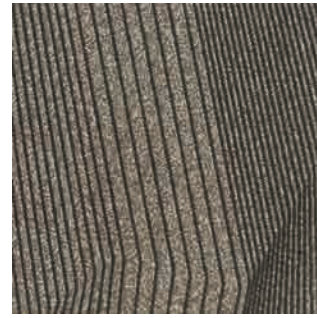
Explorer



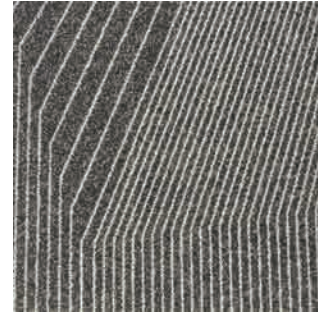
EXP154-218 PROJECTION



EXP119-6 MAPPING



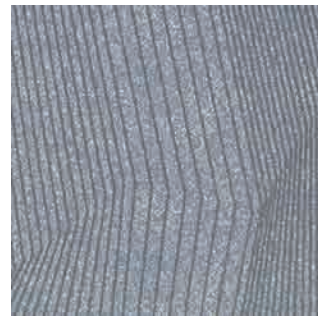
EXP133-94 PLANS



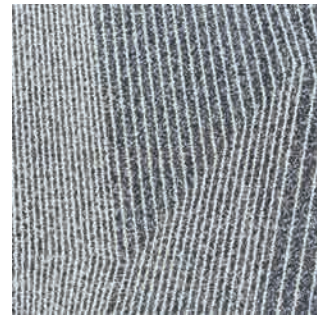
EXP218-145 TERRAIN



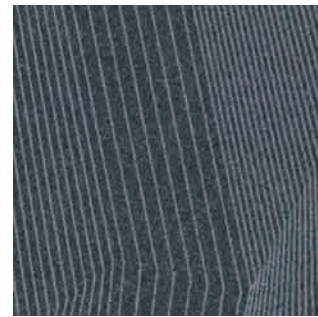
EXP219-108 ELEVATE



EXP13-153 GRID



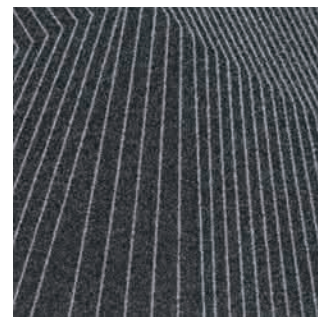
EXP219-13 SURFACES



EXP153-118 LANDFORM

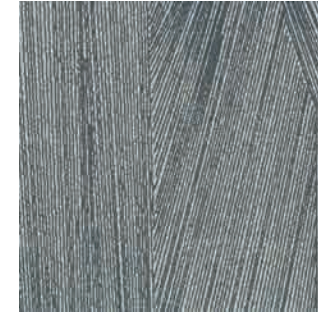


EXP119-219 BREAK-LINE



EXP144-119 BORDER

Relief



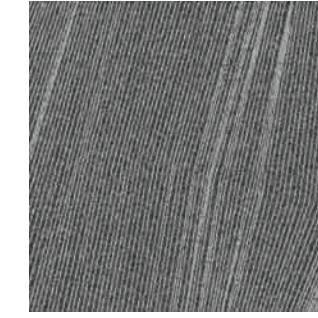
REF154-218 PROJECTION



REF119-6 MAPPING



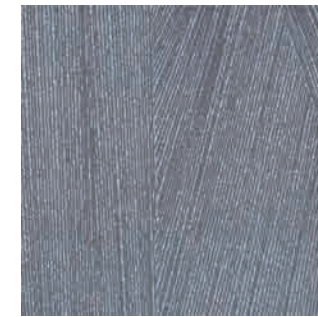
REF133-94 PLANS



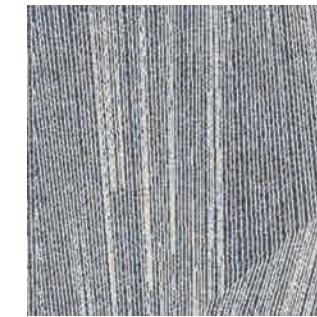
REF218-145 TERRAIN



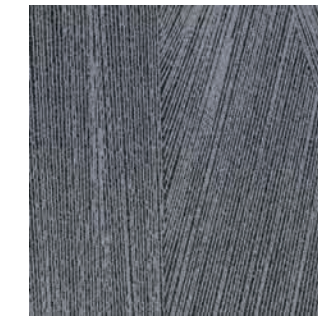
REF219-108 ELEVATE



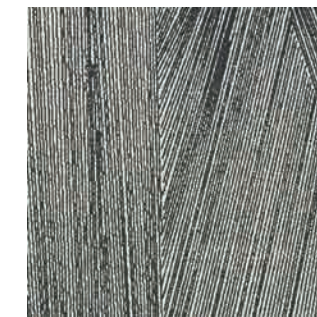
REF13-153 GRID



REF219-13 SURFACES



REF153-118 LANDFORM

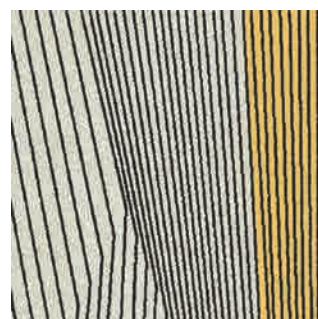


REF119-219 BREAK-LINE

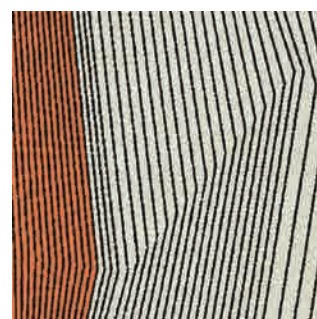


REF144-119 BORDER

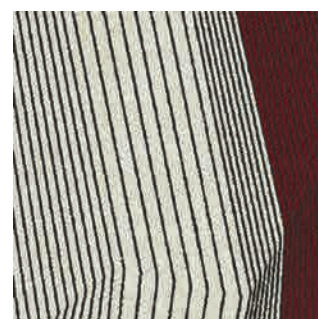
ACCENT EXAMPLES Zones



EXPZ231-119-219
BREAK-LINE WITH SUN



EXPZ25-119-219
BREAK-LINE WITH TANGERINE



EXPZ109-119-219
BREAK-LINE WITH SCARLET



EXPZ202-119-219
BREAK-LINE WITH PARROT

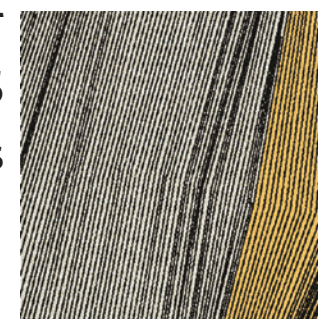


EXPZ140-119-219
BREAK-LINE WITH AZUL

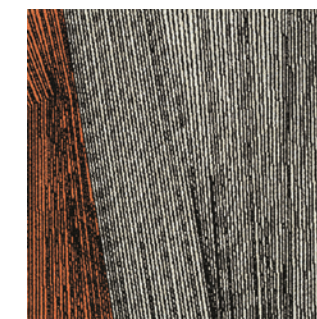


EXPZ19-119-219
BREAK-LINE WITH NAVY

ACCENT EXAMPLES Zones



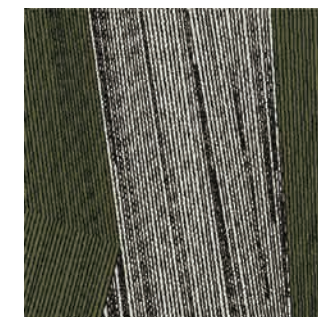
REFZ231-119-219
BREAK-LINE WITH SUN



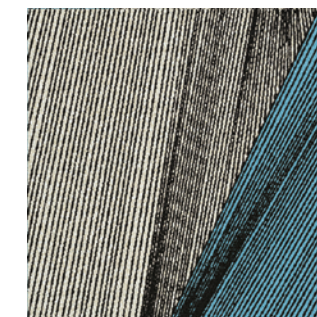
REFZ25-119-219
BREAK-LINE WITH TANGERINE



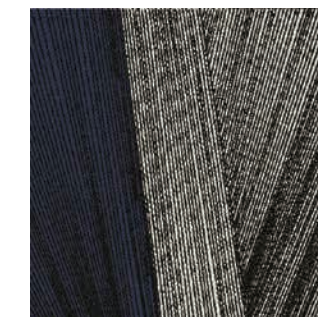
REFZ109-119-219
BREAK-LINE WITH SCARLET



REFZ202-119-219
BREAK-LINE WITH PARROT



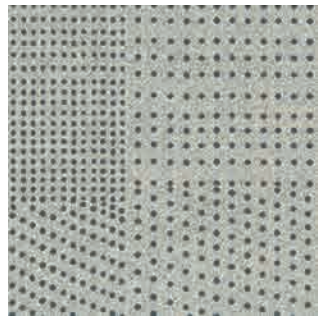
REFZ140-119-219
BREAK-LINE WITH AZUL



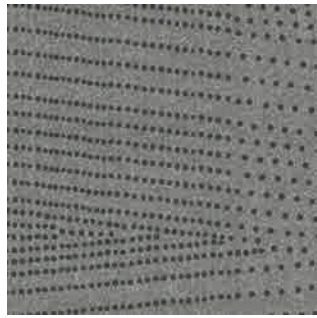
REFZ19-119-219
BREAK-LINE WITH NAVY

COLOURWAY

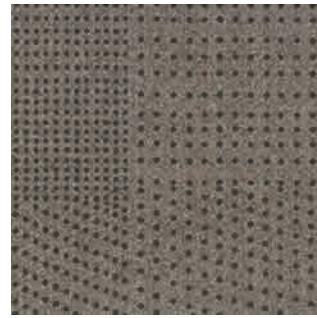
Navigator



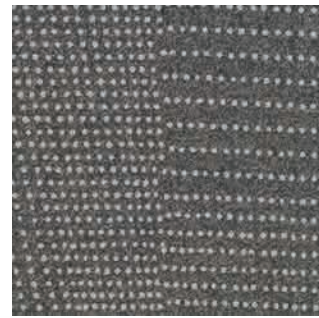
NAV154-218 PROJECTION



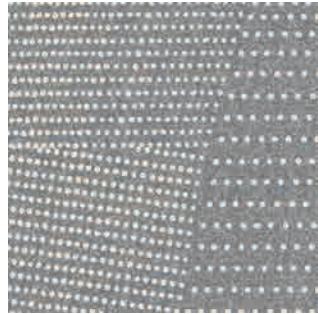
NAV119-6 MAPPING



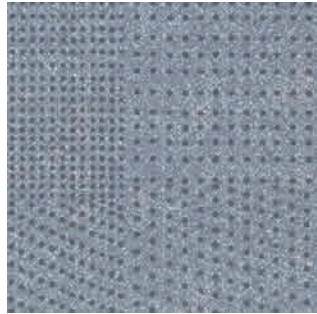
NAV133-94 PLANS



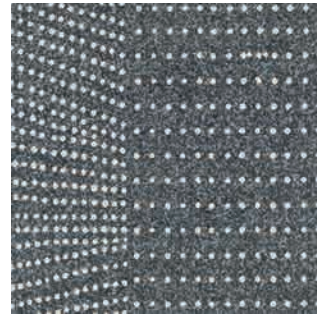
NAV218-145 TERRAIN



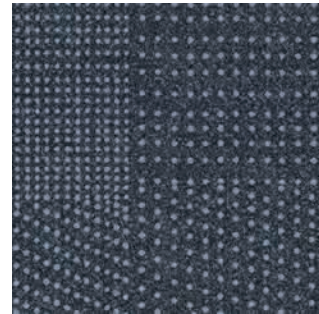
NAV219-108 ELEVATE



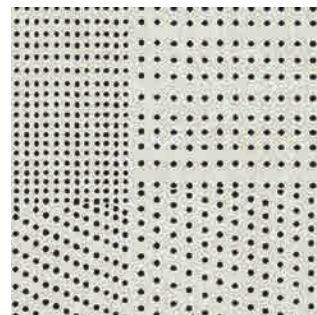
NAV13-153 GRID



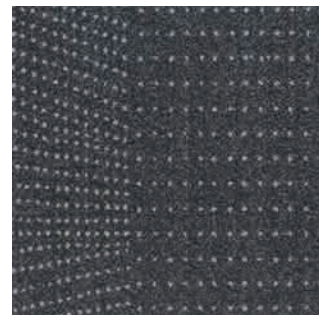
NAV219-13 SURFACES



NAV153-118 LANDFORM



NAV119-219 BREAK-LINE

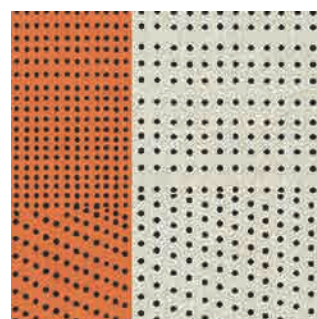


NAV144-119 BORDER

ACCENT EXAMPLES Zones



NAVZ231-119-219
BREAK-LINE WITH SUN



NAVZ25 -119-219
BREAK-LINE WITH TANGERINE



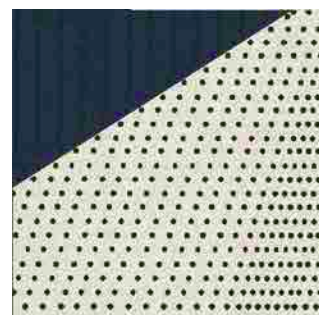
NAVZ109-119-219
BREAK-LINE WITH SCARLET



NAVZ202-119-219
BREAK-LINE WITH PARROT

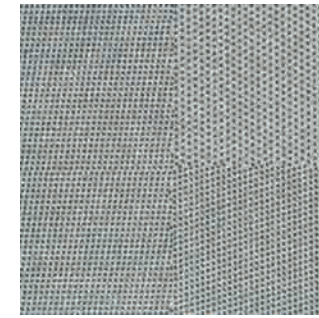


NAVZ140-119-219
BREAK-LINE WITH AZUL

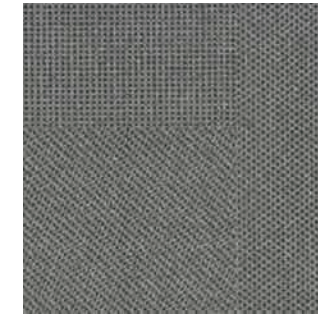


NAVZ19-119-219
BREAK-LINE WITH NAVY

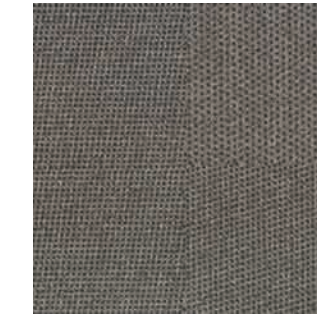
Regions



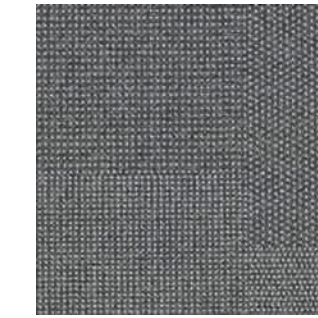
REG154-218 PROJECTION



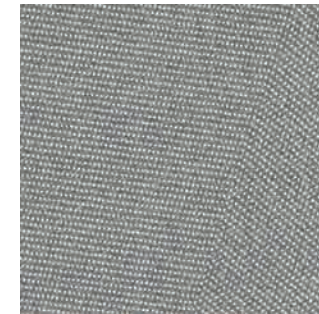
REG119-6 MAPPING



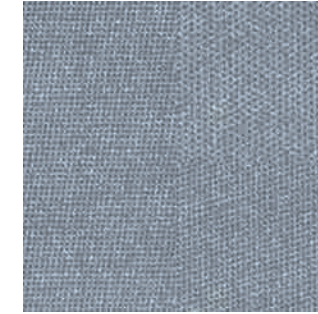
REG133-94 PLANS



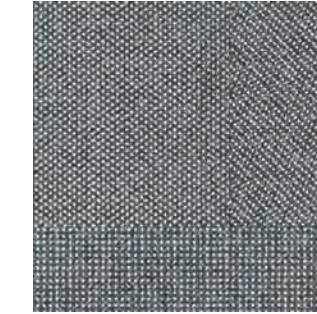
REG218-145 TERRAIN



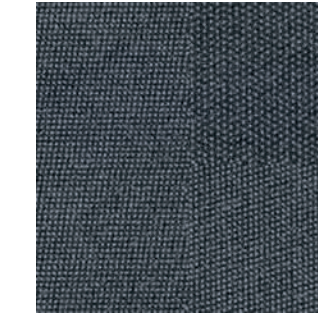
REG219-108 ELEVATE



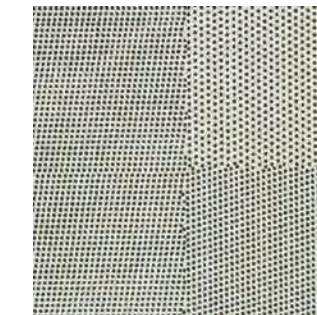
REG13-153 GRID



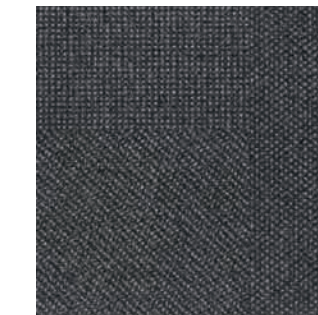
REG219-13 SURFACES



REG153-118 LANDFORM

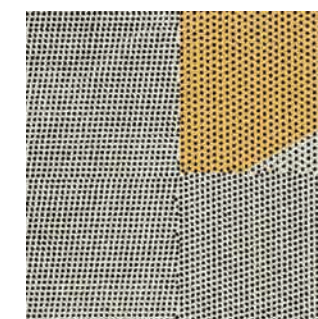


REG119-219 BREAK-LINE

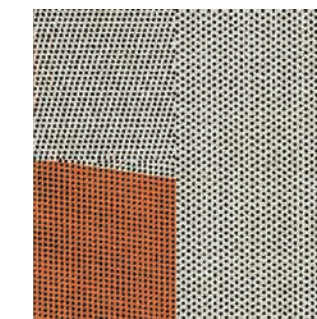


REG144-119 BORDER

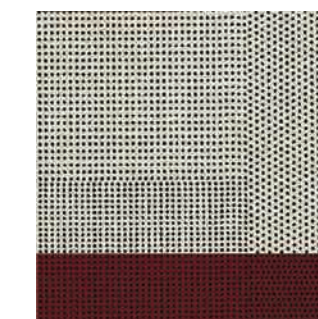
ACCENT EXAMPLES Zones



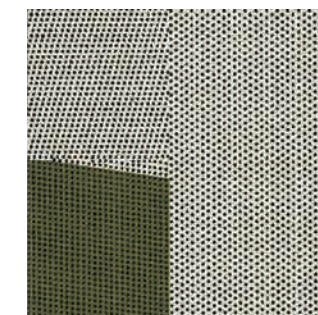
REGZ231-119-219
BREAK-LINE WITH SUN



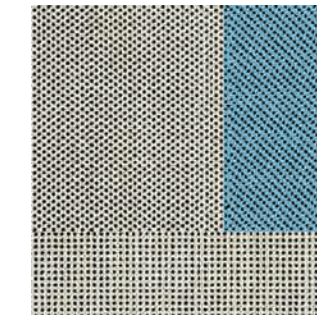
REGZ25 -119-219
BREAK-LINE WITH TANGERINE



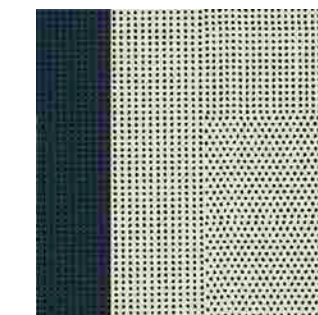
REGZ109-119-219
BREAK-LINE WITH SCARLET



REGZ202-119-219
BREAK-LINE WITH PARROT



REGZ140-119-219
BREAK-LINE WITH AZUL



REGZ19-119-219
BREAK-LINE WITH NAVY

It takes humans to protect humanity.

Make changes to end climate change.

Design a better future.

M/PACT™
CARBON NEUTRAL PROGRAM

CLIMATE CHANGE IS ONE OF THE GREATEST THREATS FACING HUMANITY, AND WE ARE ALL RESPONSIBLE.

That's why Milliken Floor Covering launched the **M/PACT™** carbon neutral program. Today, our carpet, LVT and entrance flooring tiles are carbon neutral everywhere in the world.

M/PACT carbon neutral products offset the raw materials and manufacturing carbon footprint* by using 3rd party Verified Carbon Standard Credits that support renewable energy and carbon reduction technologies to help fight climate change. When you choose M/PACT products, you can be sure your choice is carbon neutral.



SCAN TO LEARN MORE ABOUT OUR CARBON NEUTRAL PROGRAM

M/PACT™

M/PACT™

CARBON NEUTRAL PROGRAM

Investment

Today we invest through renewable energy credits, verified carbon offsets, and installing solar power at our Sydney manufacturing facility. We also continue to invest in more efficient manufacturing technologies and in local supply chains.

Materials

We believe material health is essential to enable circularity. The use of materials that don't contain harmful chemicals provides a critical pathway to end-of-life product recycling. Our carpet, LVT and entrance flooring tiles are recyclable.

Dematerialisation

We continue to support the advancement of a circular economy – one that uses less new raw materials and creates less waste. For example, we have created a portfolio of carpet tiles that use less raw material, reducing embodied carbon. We will continue to challenge ourselves and our supply chains to extend innovation in new technologies for dematerialisation.

Manufacturing

We leverage our global manufacturing and local supply chains to minimise carbon emissions. More efficient manufacturing and distribution not only reduces our global carbon footprint, it also has a direct positive impact on the communities we call home.

Wellness

Climate change directly impacts human health and wellness. Pollution. Natural disasters. Droughts. As a founding member of the Well Living Lab and a Well Portfolio Member, we aspire to design products that enhance well-being and quality of life of indoor spaces.

We will continue to do more to lower our carbon footprint.

The M/PACT™ program is long-term, because the fight to stop climate change will be a long one. As a global manufacturing company, we set 2025 goals that align with the United Nations Sustainable Development Goals. We push ourselves to meet our targets on Planet, Product, and People, including a 25% reduction in indexed greenhouse emissions by 2025. These 2025 goals are a benchmark for us to achieve more, faster. We encourage you to specify our carbon neutral products for all of your projects to ensure the climate change journey continues.

Together, we can make a positive **M/PACT™** on the world for generations.

* As calculated and verified scope A1-3 GWP through a ISO14025/ISO14040 compliant LCA and published in third party EPDs.

Milliken

Milliken



Self-sanitising Carpet

Integrated Infection Control



MGUARD+ treatment kills 99% of the SARS-CoV-2 virus within 2 hours of contact with Milliken PrintWorks™ carpet tiles.

MGUARD+ treatment kills 99% of *S. aureus*, *E. coli*, *K. pneumoniae* in 24 hours as per AATCC 174-2.

Duration of protection varies with use.

Powered by HealthGuard®.

Only available in Australia and New Zealand.

Declare.



WellBAC®

Milliken WellBAC® open cell foam cushion provides superior durability, appearance retention and cushioning.



Up to 24% greater underfoot comfort for enhanced ergonomics whilst standing.



Up to 50% improved acoustics for quieter, more productive spaces.



Industry leading moisture management with non-reactive backings to enhance the installation process.



3rd party Verified Red-List Free products for occupant and installer well-being.



Enhanced Indoor Air Quality (Low VOC) for improved occupant and installer well-being.

FACE FABRIC

Patterns and structures made up of nylon yarns with our state of the art tufting technology.

PRIMARY BACKING

The face yarn is tufted through a high quality non-woven textile. The structure of the textile holds the yarn in place acting as the primary backing.

PRECOAT

The precoat layer locks the tufted yarns in the primary backing to ensure good tuft bind strength between the yarns and the backing.

FIBERGLASS

A high quality fiberglass layer is embedded in the polyolefin compound to ensure dimensional stability of the tile.

SECONDARY BACKING

Proprietary Polyolefin compound layer formulated by Milliken R&D scientists to create a durable and stable tile. Our formulation does not contain PVC or plasticizers.

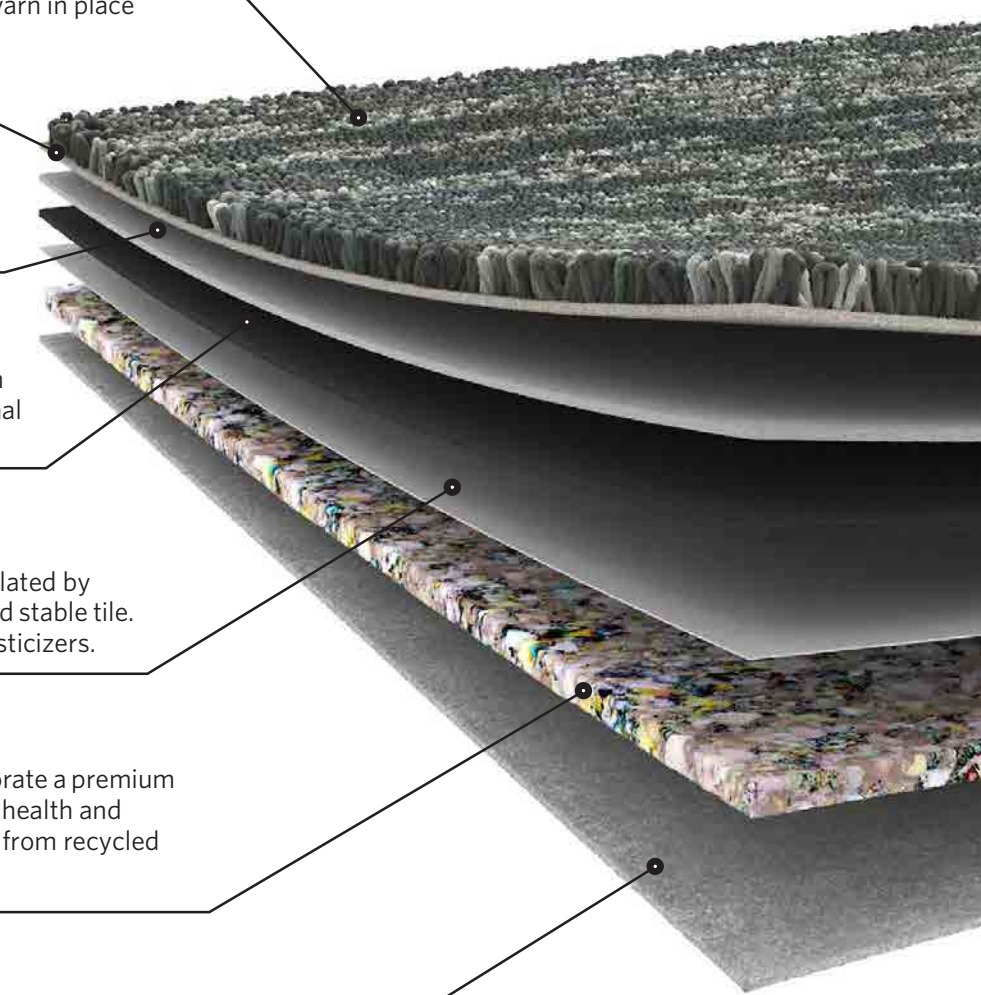
PREMIUM CUSHION

WellBAC® Comfort and Comfort Plus incorporate a premium cushion layer, designed to provide additional health and wellness benefits. Milliken's cushion is made from recycled polyurethane foam.

FELT BACK

A protective non-woven textile layer provides a breathable non-reactive finish. It enhances health and wellness.

Milliken's standard cushion backing system — offering enhanced underfoot comfort, acoustic and wear performance.



SOUTH ZONE

LAB

play pod

QUIET ISLAND ...

100▲

200▲

300▲



TOPOGRAPHY 2.0

Explorer | Relief | Navigator | Regions

SPECIFICATION



When you choose M/PACT™ products, you can be sure your choice is carbon neutral. M/PACT™ carbon neutral products offset the raw materials and manufacturing carbon footprint* by using 3rd party Verified Carbon Standard Credits that support renewable energy and carbon reduction technologies to help fight climate change. *as calculated and verified through a ISO14025/ISO14040 compliant LCA and published in third party EPD.

Standard Backing	Cushion Backing WellBAC® Comfort (PVC FREE) (Non-Reactive Cushion Backing)
Acoustic Value	Noise Reduction Coefficient - NRC ≥ 0.25 Impact Sound Pressure Level - Ln,w ≤ 47dB
Concrete Slab Moisture Mitigation	Site-Related Solutions (SRS). Milliken Cushion backed tile + Non-Reactive Standard adhesive means installation 60 days after a new concrete pour, fully warranted no moisture testing required. Refer millikenfloors.com.au
Antiviral Antibacterial	MGUARD+ Antiviral and Antibacterial Treatment. Further information refer to millikenfloors.com.au

Construction	Tufted, Textured Loop	Lightfastness (AATCC 16E)	≥ 4.0 at 80 Hours
Tile Size	50cm x 50cm	Static Electricity	≤ 3.5KV
Yarn Type	Milliken Certified 100% Nylon	(AATCC-134) 20% R.H., 70°F	
Stain Resist Soil Release	StainSmart®	Indoor Air Quality CRI Green Label Plus™	≤ 0.5mg/m³ (GLP0793)
Dye Method	PrintWorks™	VOC	Pass (ISO 10580:2010)
Gauge	1/10	ACCS Grading	CMD 2*, REHD15*, Suitable for Stairs
Stitches Per Inch	14.4	Environmental	ECS Grading - Level 4 (Certificate No. 20145) Declare - 3rd Party Verified RED LIST FREE Cradle to Cradle - Silver Carbon Neutral Environmental Product Declaration (EPD) Health Product Declaration (HPD)
Tufts	144/in² (2,230/100cm)		
Recyclable	100%		
Nominal Total Thickness	8.4mm		
Nominal Total Weight	90.3 oz/yd² (3,062g/m)		
Nominal Pile Thickness	2.8mm		
Flammability (Radiant Panel Test)	CHF/CRF = 6.3kW/m², Smoke value = 136%.min		

Recommended Installation Method(s)	Monolithic
Recommended Area of Use	Commercial Extra Heavy Duty
Warranties	15-year Wear Warranty 15-year Dimensional Stability Warranty 15-year Anti-Static Warranty 15-year Castor Chair Wear Warranty



Alliance
Founding
Member



Milliken

Australia:
Toll Free: 1800 668 372
New Zealand:
Toll Free: 0800 668 372
www.millikenfloors.com.au
(Australia & New Zealand)

This WellBAC® cushion-back carpet tile product is covered by one or more patents, published applications and/ or patents pending. Specifications are subject to normal manufacturing tolerances and may be changed without prior notice. Copies of actual test results are available upon request.

© 2022 Milliken & Company | Design © Milliken & Company