



LIGHTBOX

Milliken

# LIGHTBOX

Fascinating forms illuminate as they emerge from the shadows and move across the surface, changing colour and switching direction as they catch the light.

Solid colours give way to translucency as patterns deconstruct and simple lines and clean angles merge to become complex and multi layered.

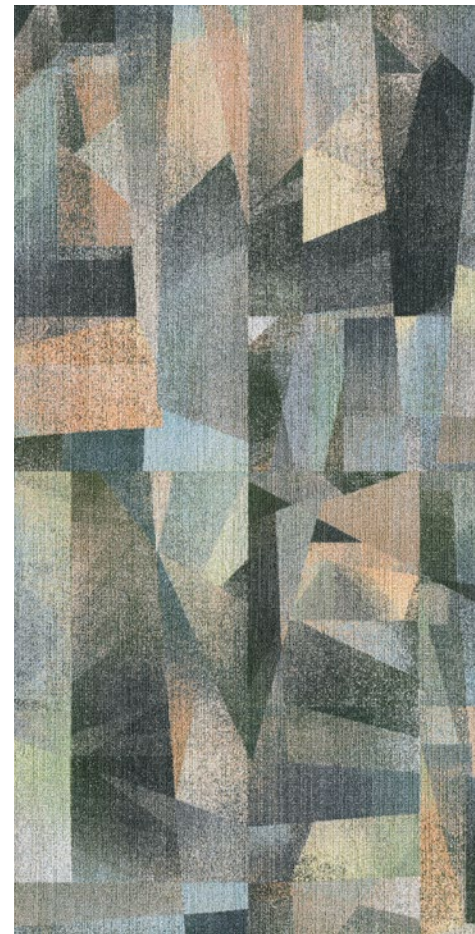
## SLATE / BLUSH



NEUTRAL



TINT



BRIGHT

Each colour represents an 8 plank layout — a 1m x 2m area.



Walkway: Lightbox in Slate/Blush Neutral | LBX144-153-154 | Ashlar (Vertical) Installation  
Circular Inset: Lightbox in Slate/Blush Tint (LBX73-236-154) and  
Slate/Blush Bright (LBX240-154-236) | Ashlar (Vertical) Installation



Left to Right: Lightbox in Sienna / Red Neutral (LBX15-212-153) and Rust / Orange Neutral (LBX128-39-5) | Ashlar (Vertical) Installation



Lightbox in Damson/Purple Neutral (LBX144-250-13) and Damson/Purple Bright (LBX73-137-13) | Ashlar (Vertical) Installation



Left to Right: Lightbox in Pink/Berry Neutral (LBX180-144-153), Pink/Berry Bright (LBX144-168-110) and Damson/Purple Bright (LBX73-137-13) | Ashlar (Vertical) Installation



Lightbox in Slate/Blush Tint | LBX73-236-154 | Ashlar (Vertical) Installation



Lightbox in Damson/Purple Neutral (LBX144-250-13) and Melba/Sorbet Tint (LBX111-221-153) | Ashlar (Vertical) Installation



Lightbox in Sienna/Red Neutral | LBX15-212-153 | Ashlar (Vertical) Installation



# COLOURWAY

## SLATE / BLUSH



LBX144-153-154 NEUTRAL

LBX73-236-154 TINT

LBX240-154-236 BRIGHT

## SMOKE / OLIVE



LBX94-153-39 NEUTRAL

LBX21-153-96 TINT

LBX14-45-28 BRIGHT

## PINK / BERRY

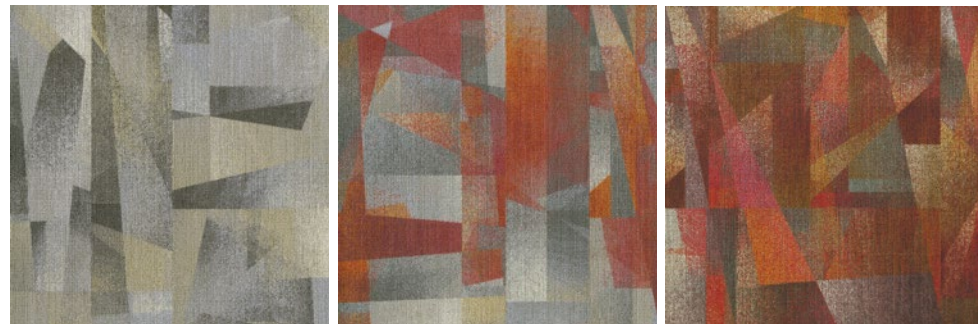


LBX180-144-13 NEUTRAL

LBX68-144-110 TINT

LBX144-168-110 BRIGHT

## SIENNA / RED



LBX15-212-153 NEUTRAL

LBX153-128-110 TINT

LBX128-110-102 BRIGHT

## AQUA / INK

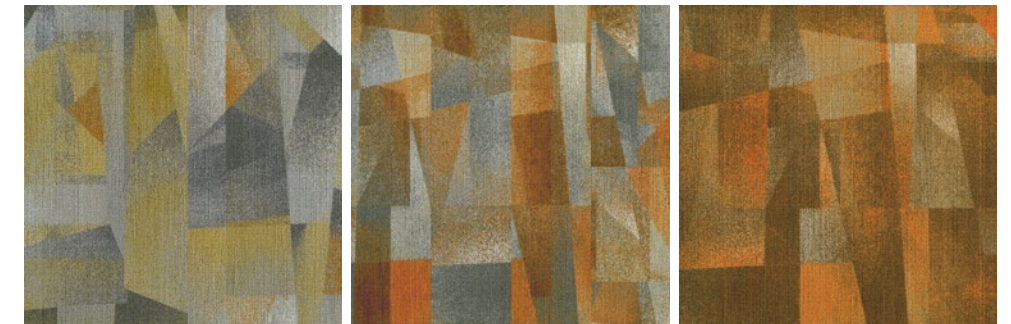


LBX248-48-153 NEUTRAL

LBX153-48-140 TINT

LBX48-13-73 BRIGHT

## RUST / ORANGE

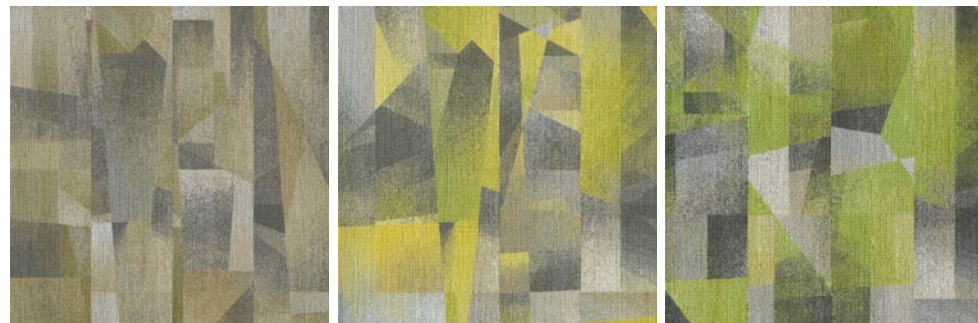


LBX128-39-5 NEUTRAL

LBX144-128-5 TINT

LBX15-98-128 BRIGHT

## CITRUS / GREEN

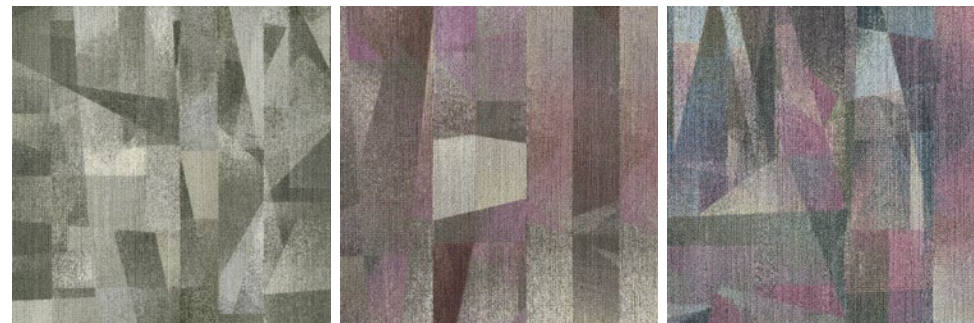


LBX81-48-153 NEUTRAL

LBX103-166-153 TINT

LBX103-153-141 BRIGHT

## DAMSON / PURPLE

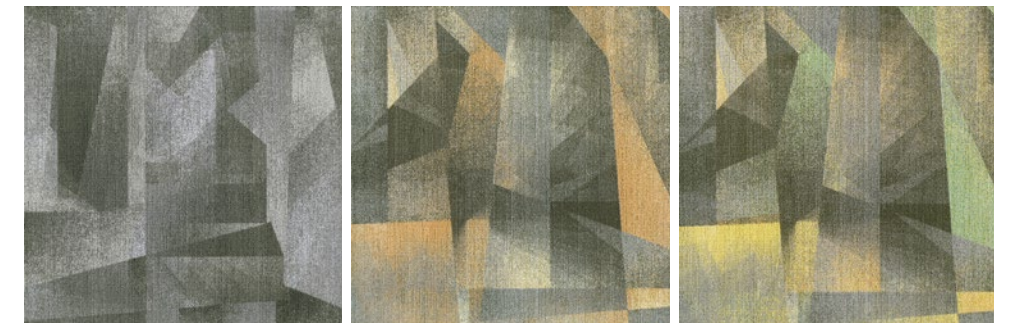


LBX144-250-13 NEUTRAL

LBX110-137-13 TINT

LBX73-137-13 BRIGHT

## MELBA / SORBET



LBX180-153-13 NEUTRAL

LBX111-221-153 TINT

LBX240-111-153 BRIGHT



# It takes humans to protect humanity.

Make changes to end climate change.

Design a better future.

**M/PACT™**  
CARBON NEUTRAL PROGRAM

## CLIMATE CHANGE IS ONE OF THE GREATEST THREATS FACING HUMANITY, AND WE ARE ALL RESPONSIBLE.

That's why Milliken Floor Covering launched the **M/PACT™** carbon neutral program. Today, our carpet, LVT and entrance flooring tiles are carbon neutral everywhere in the world.

M/PACT carbon neutral products offset the raw materials and manufacturing carbon footprint\* by using 3rd party Verified Carbon Standard Credits that support renewable energy and carbon reduction technologies to help fight climate change. When you choose M/PACT products, you can be sure your choice is carbon neutral.



SCAN TO LEARN MORE ABOUT OUR CARBON NEUTRAL PROGRAM

**M/PACT™**

# M/PACT™

CARBON NEUTRAL PROGRAM

### Investment

Today we invest through renewable energy credits, verified carbon offsets, and installing solar power at our Sydney manufacturing facility. We also continue to invest in more efficient manufacturing technologies and in local supply chains.

### Materials

We believe material health is essential to enable circularity. The use of materials that don't contain harmful chemicals provides a critical pathway to end-of-life product recycling. Our carpet, LVT and entrance flooring tiles are recyclable.

### Dematerialisation

We continue to support the advancement of a circular economy - one that uses less new raw materials and creates less waste. For example, we have created a portfolio of carpet tiles that use less raw material, reducing embodied carbon. We will continue to challenge ourselves and our supply chains to extend innovation in new technologies for dematerialisation.

### Manufacturing

We leverage our global manufacturing and local supply chains to minimise carbon emissions. More efficient manufacturing and distribution not only reduces our global carbon footprint, it also has a direct positive impact on the communities we call home.

### Wellness

Climate change directly impacts human health and wellness. Pollution. Natural disasters. Droughts. As a founding member of the Well Living Lab and a Well Portfolio Member, we aspire to design products that enhance well-being and quality of life of indoor spaces.

### We will continue to do more to lower our carbon footprint.

The M/PACT™ program is long-term, because the fight to stop climate change will be a long one. As a global manufacturing company, we set 2025 goals that align with the United Nations Sustainable Development Goals. We push ourselves to meet our targets on Planet, Product, and People, including a 25% reduction in indexed greenhouse emissions by 2025. These 2025 goals are a benchmark for us to achieve more, faster. We encourage you to specify our carbon neutral products for all of your projects to ensure the climate change journey continues.

Together, we can make a positive **M/PACT™** on the world for generations.

\* As calculated and verified scope A1-3 GWP through a ISO14025/ISO14040 compliant LCA and published in third party EPDs.

*Milliken™*

Milliken



## Self-sanitising Carpet

### Integrated Infection Control



MGUARD+ treatment kills 99% of the SARS-CoV-2 virus within 2 hours of contact with Milliken PrintWorks™ carpet tiles.

MGUARD+ treatment kills 99% of *S. aureus*, *E. coli*, *K. pneumoniae* in 24 hours as per AATCC 174-2.

Duration of protection varies with use.

Powered by HealthGuard®.

Only available in Australia and New Zealand.

Declare.



# WellBAC®

Milliken WellBAC® open cell foam cushion provides superior durability, appearance retention and cushioning.



Up to 24% greater underfoot comfort for enhanced ergonomics whilst standing.



Up to 50% improved acoustics for quieter, more productive spaces.



Industry leading moisture management with non-reactive backings to enhance the installation process.



3rd party Verified Red-List Free products for occupant and installer well-being.



Enhanced Indoor Air Quality (Low VOC) for improved occupant and installer well-being.

## FACE FABRIC

Patterns and structures made up of nylon yarns with our state of the art tufting technology.

## PRIMARY BACKING

The face yarn is tufted through a high quality non-woven textile. The structure of the textile holds the yarn in place acting as the primary backing.

## PRECOAT

The precoat layer locks the tufted yarns in the primary backing to ensure good tuft bind strength between the yarns and the backing.

## FIBERGLASS

A high quality fiberglass layer is embedded in the polyolefin compound to ensure dimensional stability of the tile.

## SECONDARY BACKING

Proprietary Polyolefin compound layer formulated by Milliken R&D scientists to create a durable and stable tile. Our formulation does not contain PVC or plasticizers.

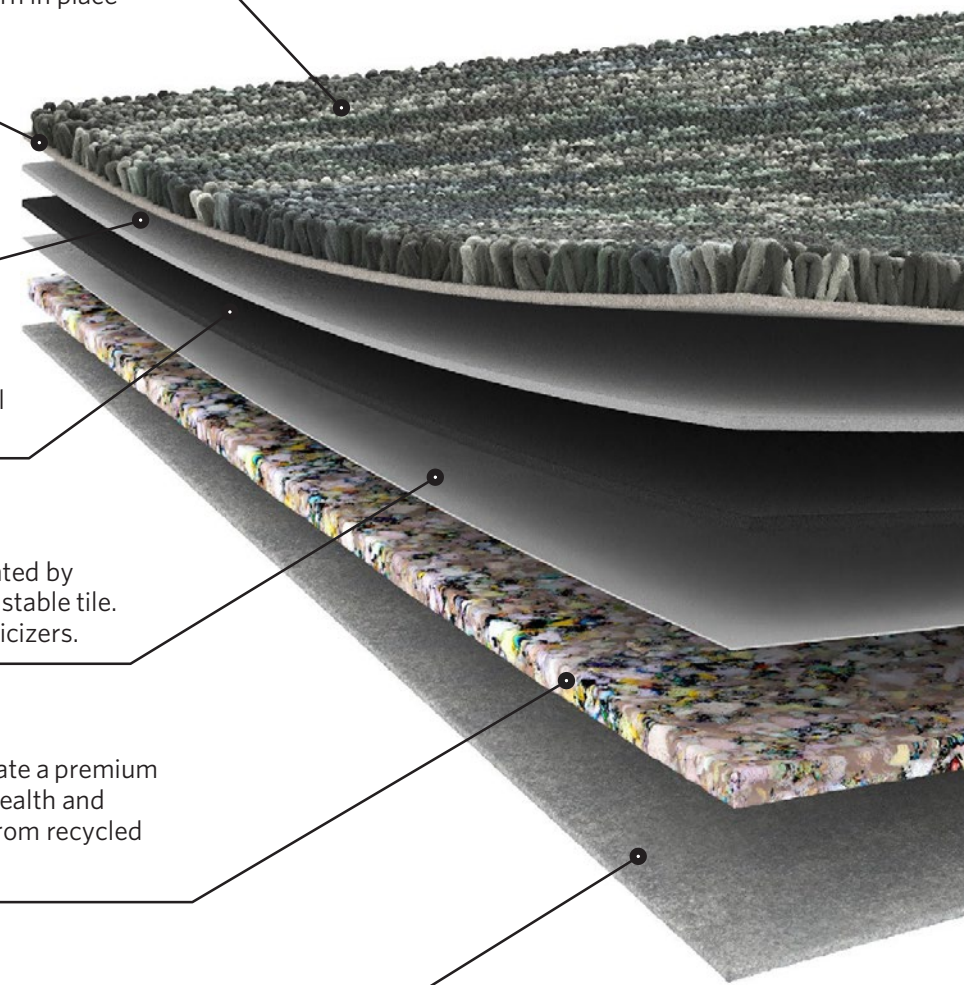
## PREMIUM CUSHION

WellBAC® Comfort and Comfort Plus incorporate a premium cushion layer, designed to provide additional health and wellness benefits. Milliken's cushion is made from recycled polyurethane foam.

## FELT BACK

A protective non-woven textile layer provides a breathable non-reactive finish. It enhances health and wellness.

Milliken's standard cushion backing system — offering enhanced underfoot comfort, acoustic and wear performance.



# LIGHTBOX

## Lightbox

### SPECIFICATION



When you choose M/PACT™ products, you can be sure your choice is carbon neutral. M/PACT™ carbon neutral products offset the raw materials and manufacturing carbon footprint\* by using 3rd party Verified Carbon Standard Credits that support renewable energy and carbon reduction technologies to help fight climate change. \*as calculated and verified through a ISO14025/ISO14040 compliant LCA and published in third party EPD.

<b>Standard Backing</b>	Cushion Backing WellBAC® Comfort (PVC FREE) (Non-Reactive Cushion Backing)
<b>Acoustic Value</b>	Noise Reduction Coefficient - NRC ≥ 0.25 Impact Sound Pressure Level - Ln,w ≤ 47dB
<b>Concrete Slab Moisture Mitigation</b>	Site-Related Solutions (SRS). Milliken Cushion backed tile + Non-Reactive Standard adhesive means installation 60 days after a new concrete pour, fully warranted no moisture testing required. Refer millikenfloors.com.au
<b>Antiviral   Antibacterial</b>	MGUARD+ Antiviral and Antibacterial Treatment. Further information refer to millikenfloors.com.au

<b>Construction</b>	Tufted, Textured Loop	<b>Lightfastness (AATCC16E)</b>	≥ 4.0 at 80 Hours
<b>Tile Size</b>	25cm x 100cm	<b>Static Electricity</b>	≤ 3.5KV
<b>Yarn Type</b>	Milliken Certified 100% Nylon	<b>(AATCC-134) 20% R.H., 70°F</b>	
<b>Stain Resist   Soil Release</b>	StainSmart®	<b>Indoor Air Quality</b>	≤ 0.5mg/m³ (GLP3237)
<b>Dye Method</b>	PrintWorks™	<b>CRI Green Label Plus™</b>	
<b>Gauge</b>	1/12	<b>VOC</b>	Pass (ISO 10580:2010)
<b>Stitches Per Inch</b>	11.6	<b>ACCS Grading</b>	CEHD 4*, REHD2 6*, Suitable for Stairs
<b>Tufts</b>	139/in² (2,126/100cm²)	<b>Environmental</b>	ECS Grading - Level 4 (Certificate No. 20078) Declare - 3rd Party Verified RED LIST FREE Cradle to Cradle - Silver Carbon Neutral Environmental Product Declaration (EPD) Health Product Declaration (HPD)
<b>Total Tile Mass</b>	16 oz/yd² (543g/m²)		
<b>Recyclable</b>	100%		
<b>Nominal Total Thickness</b>	8.2mm		
<b>Nominal Total Weight</b>	94 oz/yd² (3,184g/m²)		
<b>Nominal Pile Thickness</b>	2.1mm		
<b>Flammability (Radiant Panel Test)</b>	CHF/CRF = 5.1kW/m², Smoke value = 240%.min		

<b>Recommended Installation Method(s)</b>	Ashlar (Vertical)
<b>Recommended Area of Use</b>	Commercial Extra Heavy Duty
<b>Warranties</b>	15-year Wear Warranty 15-year Dimensional Stability Warranty 15-year Anti-Static Warranty 15-year Castor Chair Wear Warranty



Alliance  
Founding  
Member



Milliken

Lightbox in Citrus/Green in Bright | LBX103-153-141  
Ashlar (Vertical) Installation

**Australia:**  
Toll Free: 1800 668 372  
**New Zealand:**  
Toll Free: 0800 668 372  
[www.millikenfloors.com.au](http://www.millikenfloors.com.au)  
(Australia & New Zealand)

This WellBAC® cushion-back carpet tile product is covered by one or more patents, published applications and/ or patents pending. Specifications are subject to normal manufacturing tolerances and may be changed without prior notice. Copies of actual test results are available upon request.

© 2022 Milliken & Company | Design © Milliken & Company