

The background of the entire image is a close-up, high-resolution photograph of cork flooring. The cork granules are irregular in shape and size, ranging from small, light-colored pieces to larger, darker brown ones. The overall appearance is a dense, textured surface with a natural, organic feel.

étage®

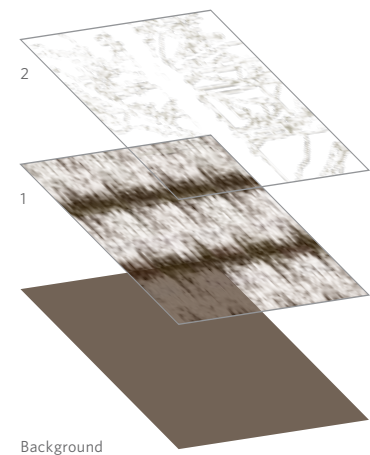
SOLSTICE

Milliken™



## INSPIRED. INSPIRING.

When the sun is lowest on the horizon at the southern solstice, it accentuates the intricate textures of winter and shadowy lines of the barren trees. Our observation is an abstract play of shadow and silhouette, where the tracery of branches and the highlight of exposed texture convey a change of time and the beauty in stillness.



**BROADLOOM RUG / RUNNER**

- 1
- 2
- 6
- 11

Order #: 00283765  
Pattern repeat:  
81.00" W x 121.50" L

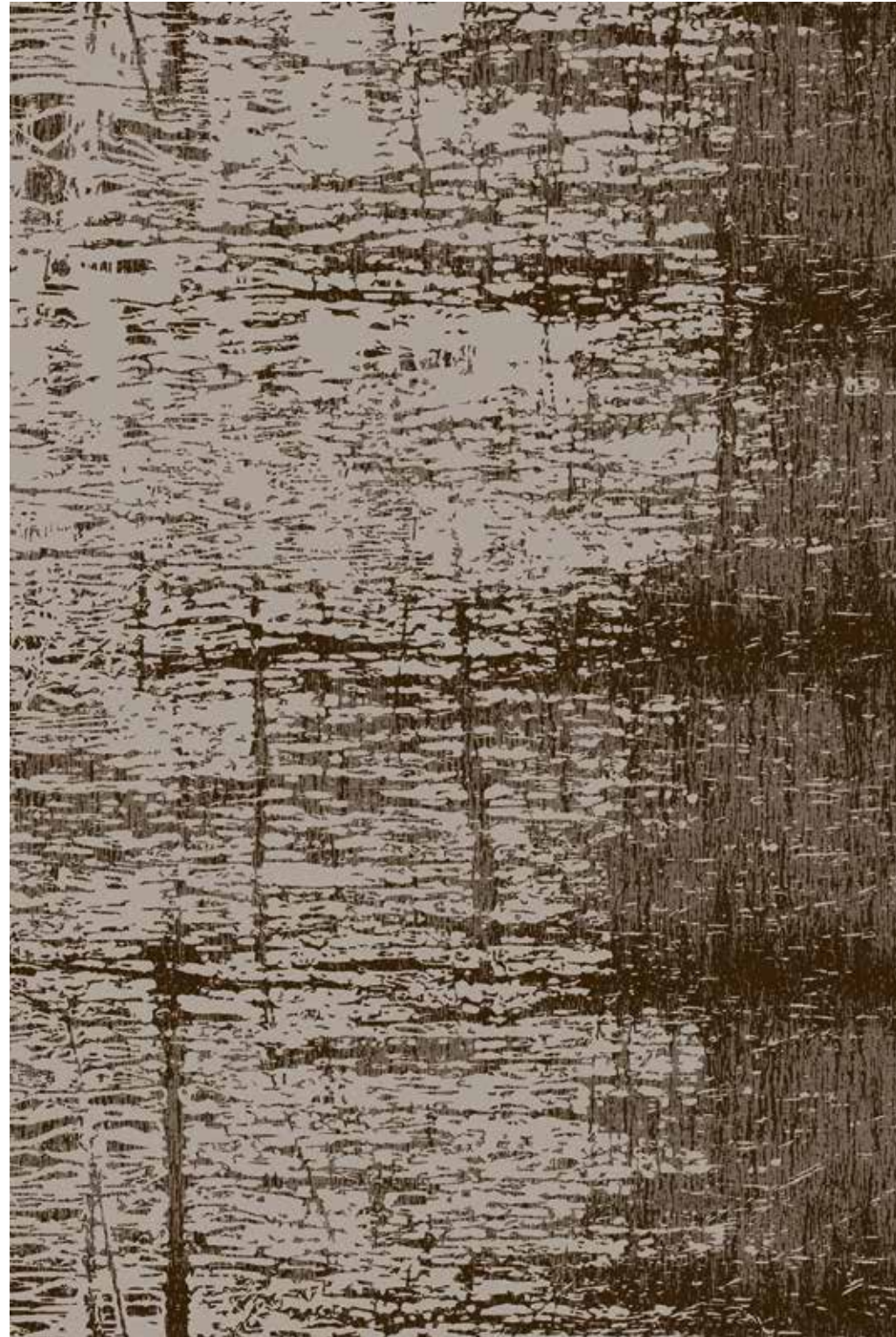
*Single pattern repeat*



**BROADLOOM RUG / RUNNER**

- 1
- 2
- 6
- 11

Order #: 00283765  
Pattern repeat:  
81.00" W x 121.50" L

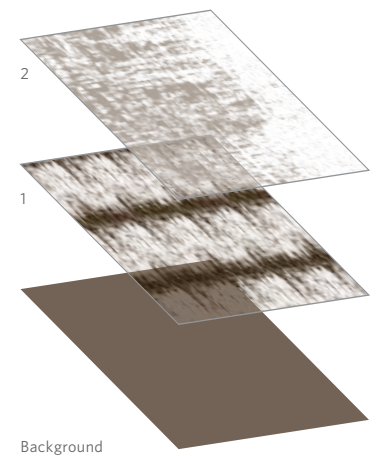


**BROADLOOM RUNNER**

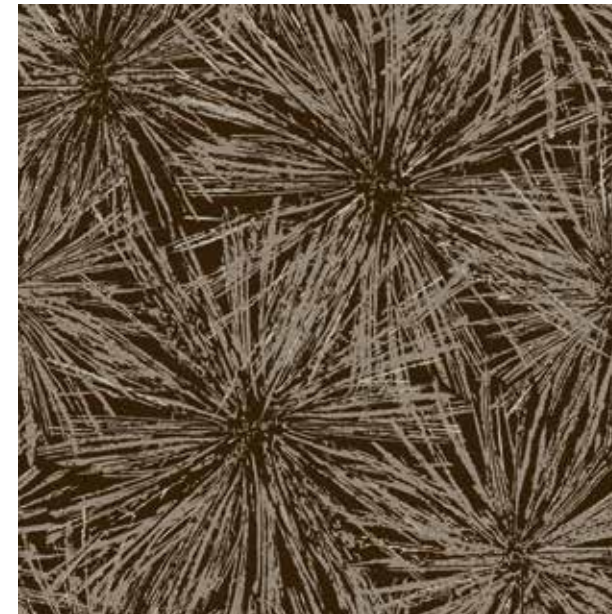
1 2 10

Order #: 00287013  
Pattern repeat:  
81.00" W x 121.50" L

Single pattern repeat



Single pattern repeat



**BROADLOOM LARGE SCALE**

1 6 11

Order #: 00286467  
Pattern repeat:  
81.00" W x 81.00" L

Three pattern repeats shown

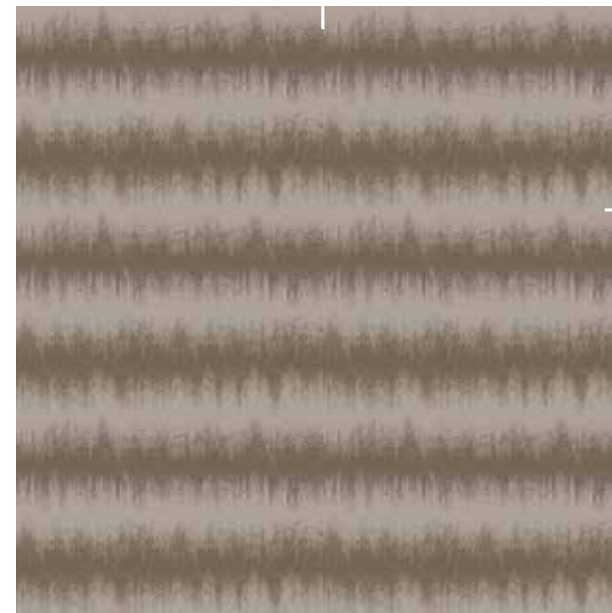


**BROADLOOM MEDIUM**

1 2

Order #: 00283749  
Pattern repeat:  
40.50" W x 60.75" L

Six pattern repeats shown



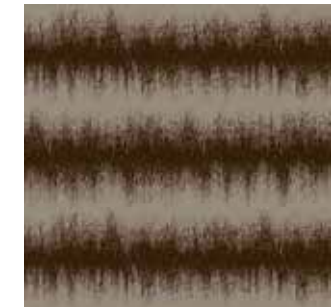
**BROADLOOM SMALL SCALE**

2 6 10

Order #: 00293017  
Pattern repeat:  
40.50" W x 27.00" L

## Bruma

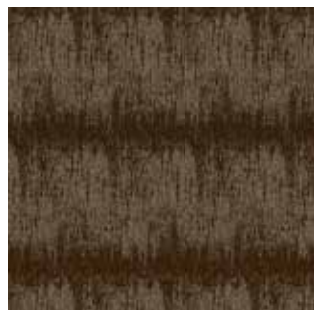
From elevator lobby to the guest room, Bruma offers an exploration of scale and layering as we begin to define the transition from public corridor to private suite. Sketched details of branches accentuate the undercanopy, bark-like texture of the corridor broadloom. This abstraction is further simplified as we transition into the private guest space. Clarity of line and detail of pattern become evident in a modern abstraction of texture in the small scale broadloom.



**BROADLOOM SMALL SCALE**  
Order #: 00293018  
Pattern repeat:  
40.50" W x 27.00" L

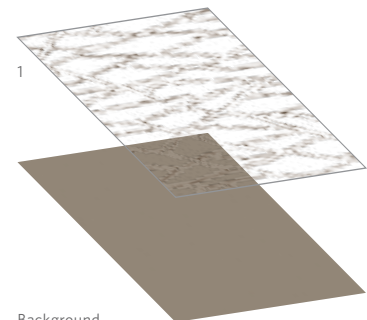
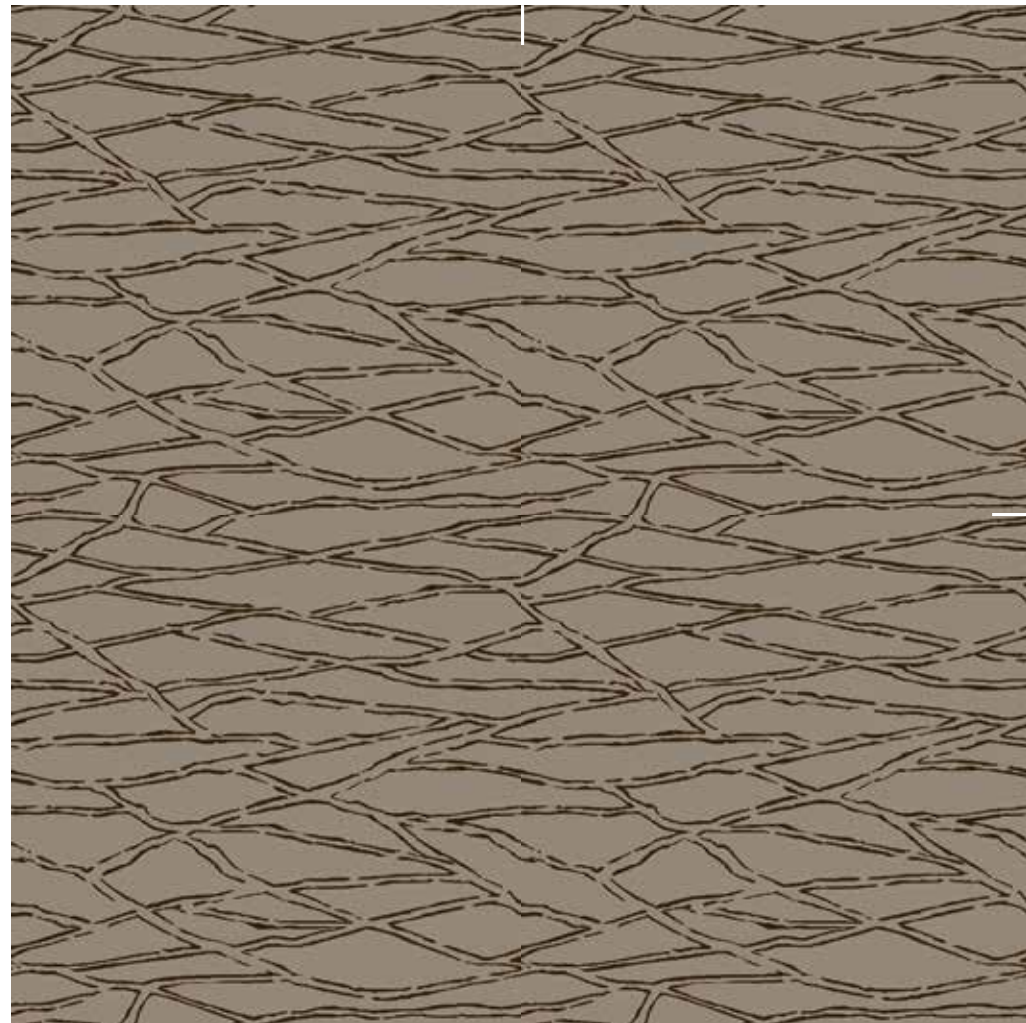


**BROADLOOM RUG / RUNNER**  
Order #: 00283765  
Pattern repeat:  
81.00" W x 121.50" L



**BROADLOOM MEDIUM SCALE**  
Order #: 00283749  
Pattern repeat:  
40.50" W x 60.75" L

**1** E119 - SOLID

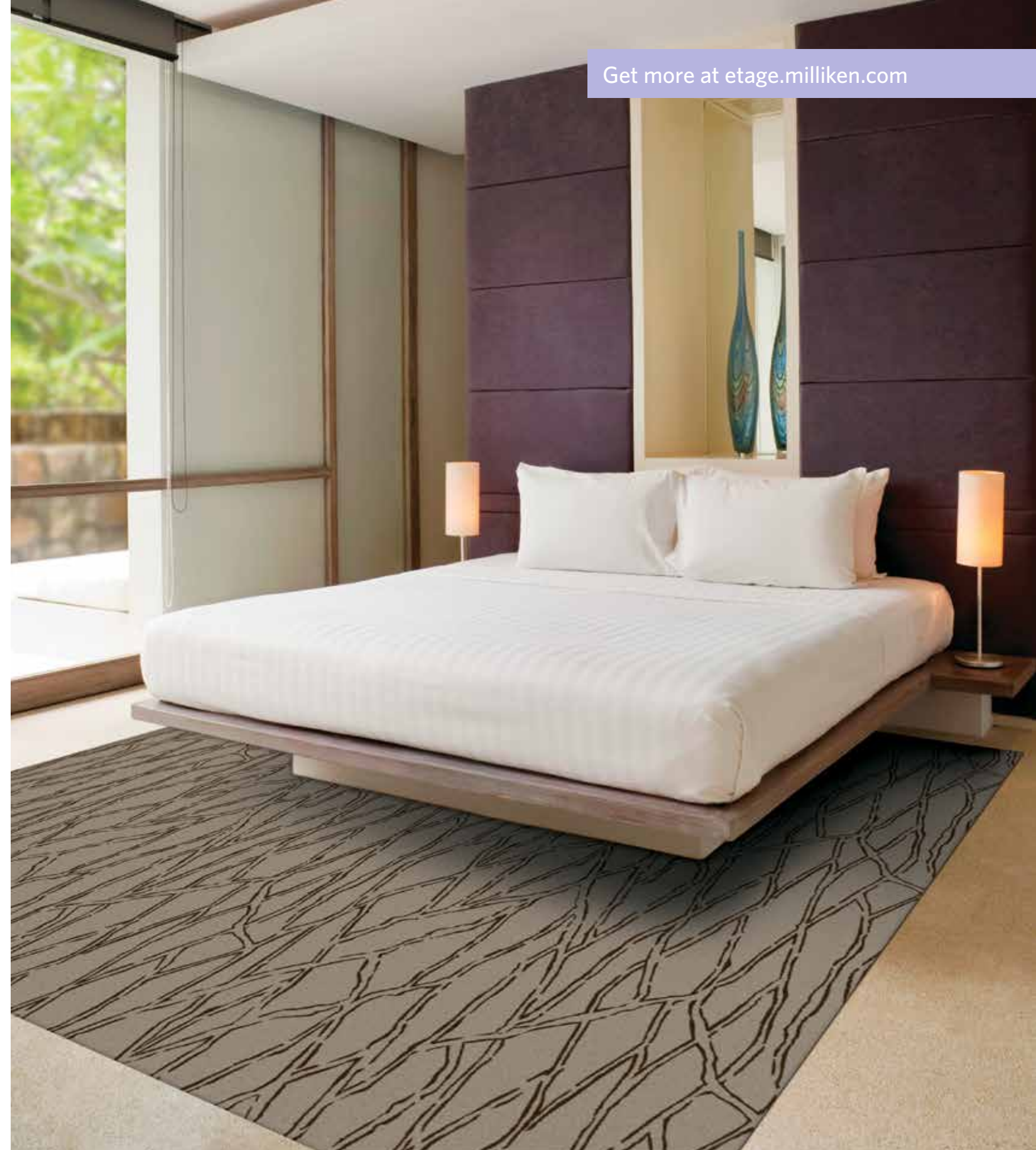


**BROADLOOM MEDIUM SCALE**

**1 6**

Order #: 00288197  
Pattern repeat:  
40.50" W x 40.50" L

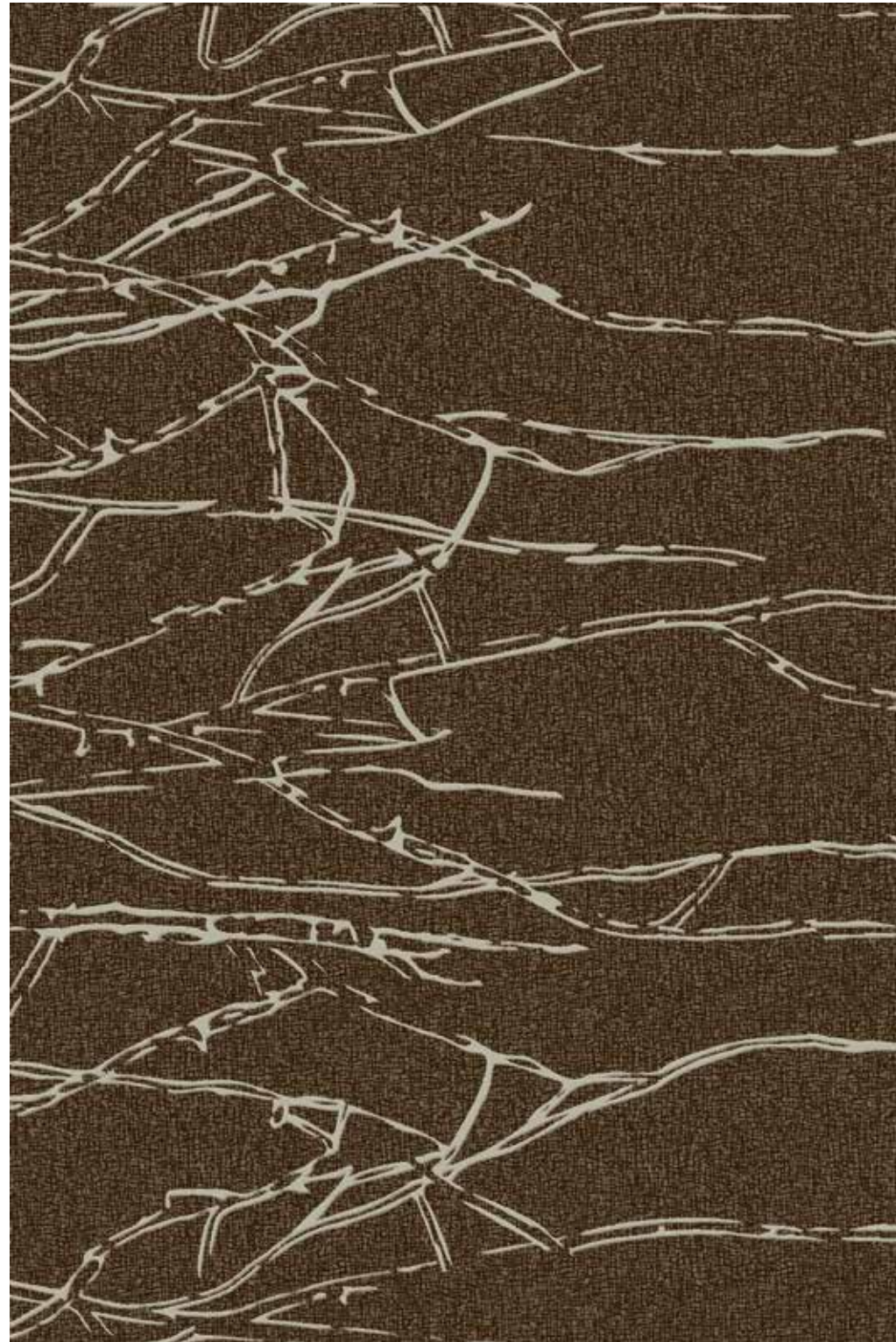
*Four pattern repeats shown*



**BROADLOOM MEDIUM SCALE**

**1 6**

Order #: 00288197  
Pattern repeat:  
40.50" W x 40.50" L

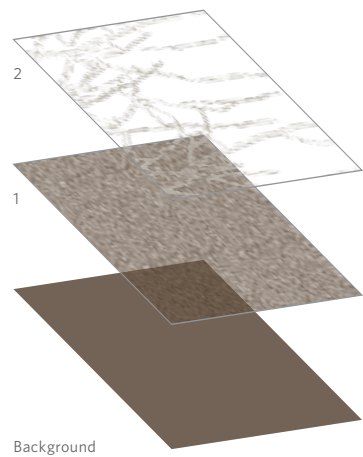


**BROADLOOM RUG / RUNNER**

1 2 6 11

Order #: 00282853  
Pattern repeat:  
81.00" W x 121.50" L

Single pattern repeat



Background

81.00"W x 81.00"L shown



**BROADLOOM SMALL SCALE**

1 2

Order #: 00292558  
No pattern repeat

Single pattern repeat



**BROADLOOM LARGE SCALE**

1 6 11

Order #: 00282856  
Pattern repeat:  
81.00" W x 81.00" L

Single pattern repeat



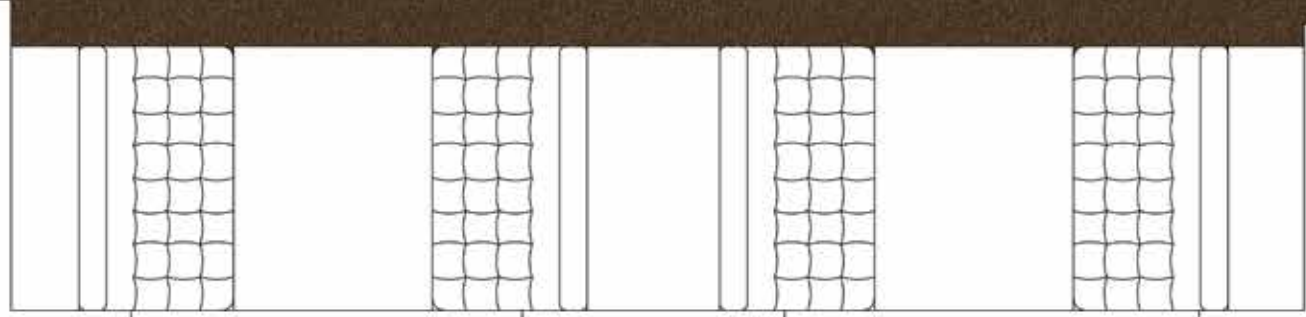
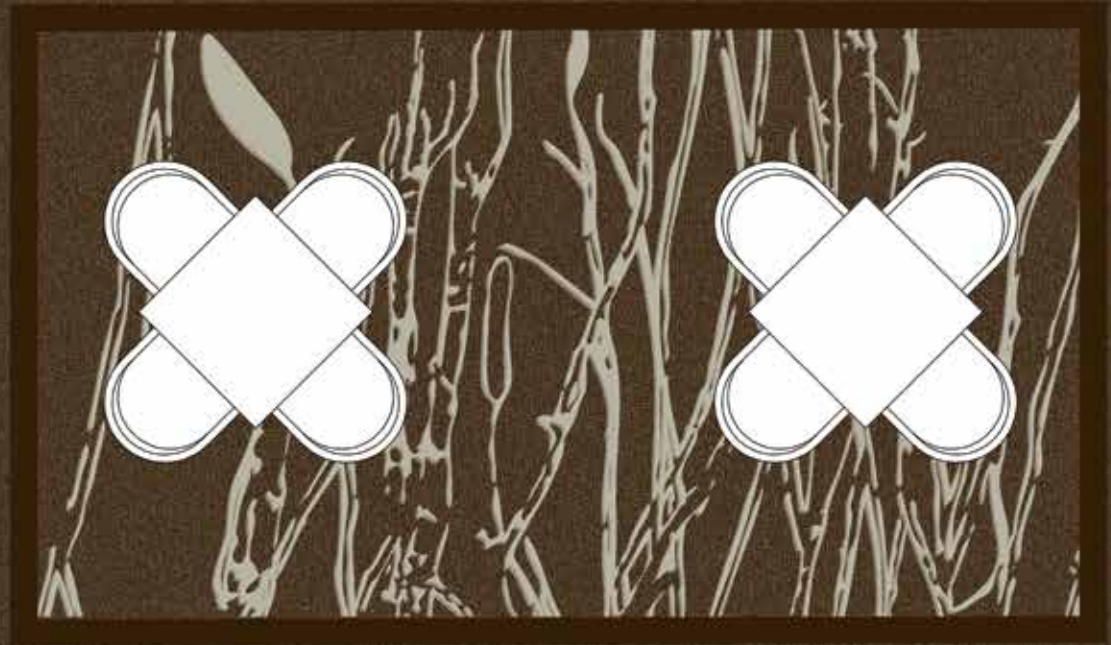
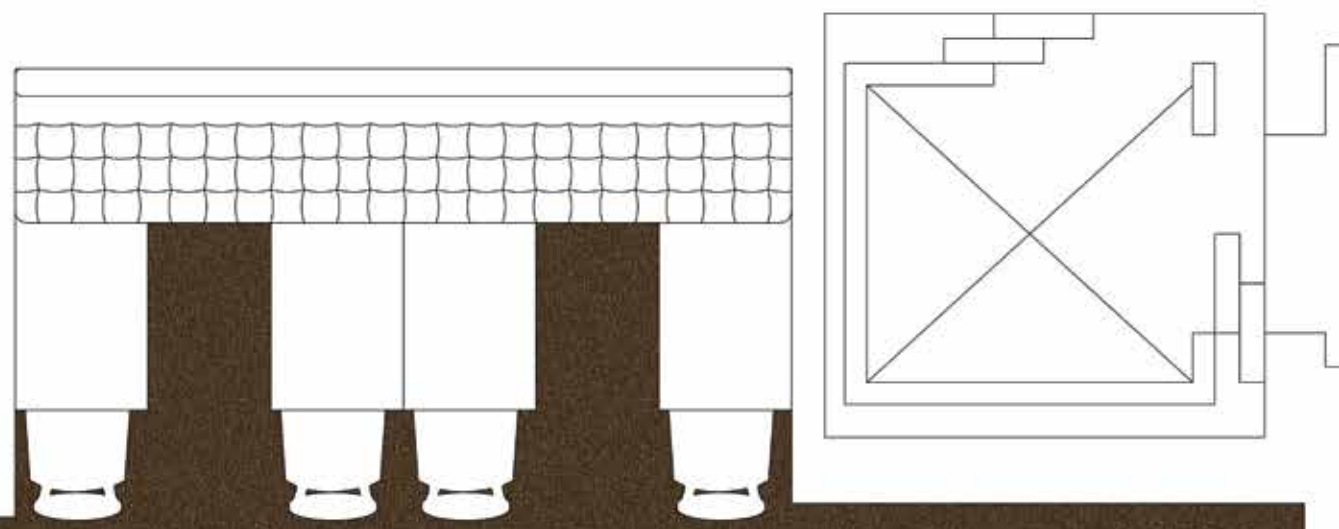
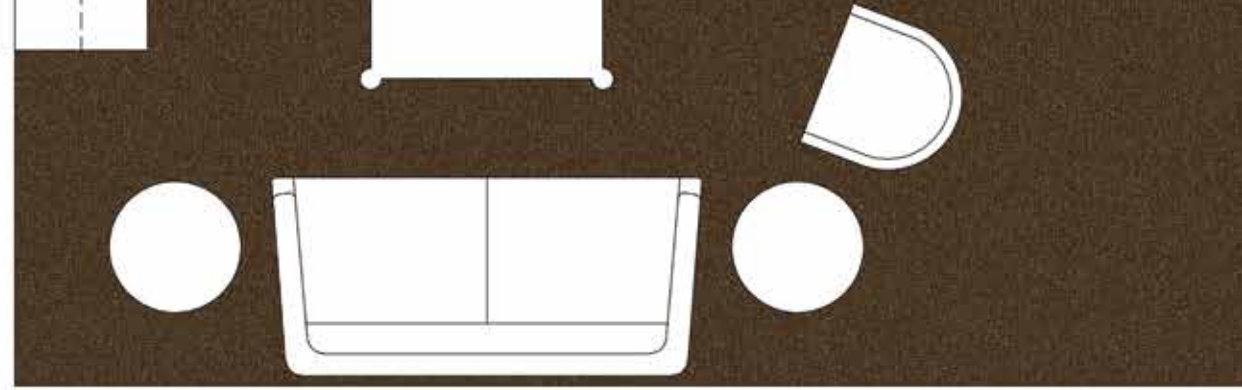
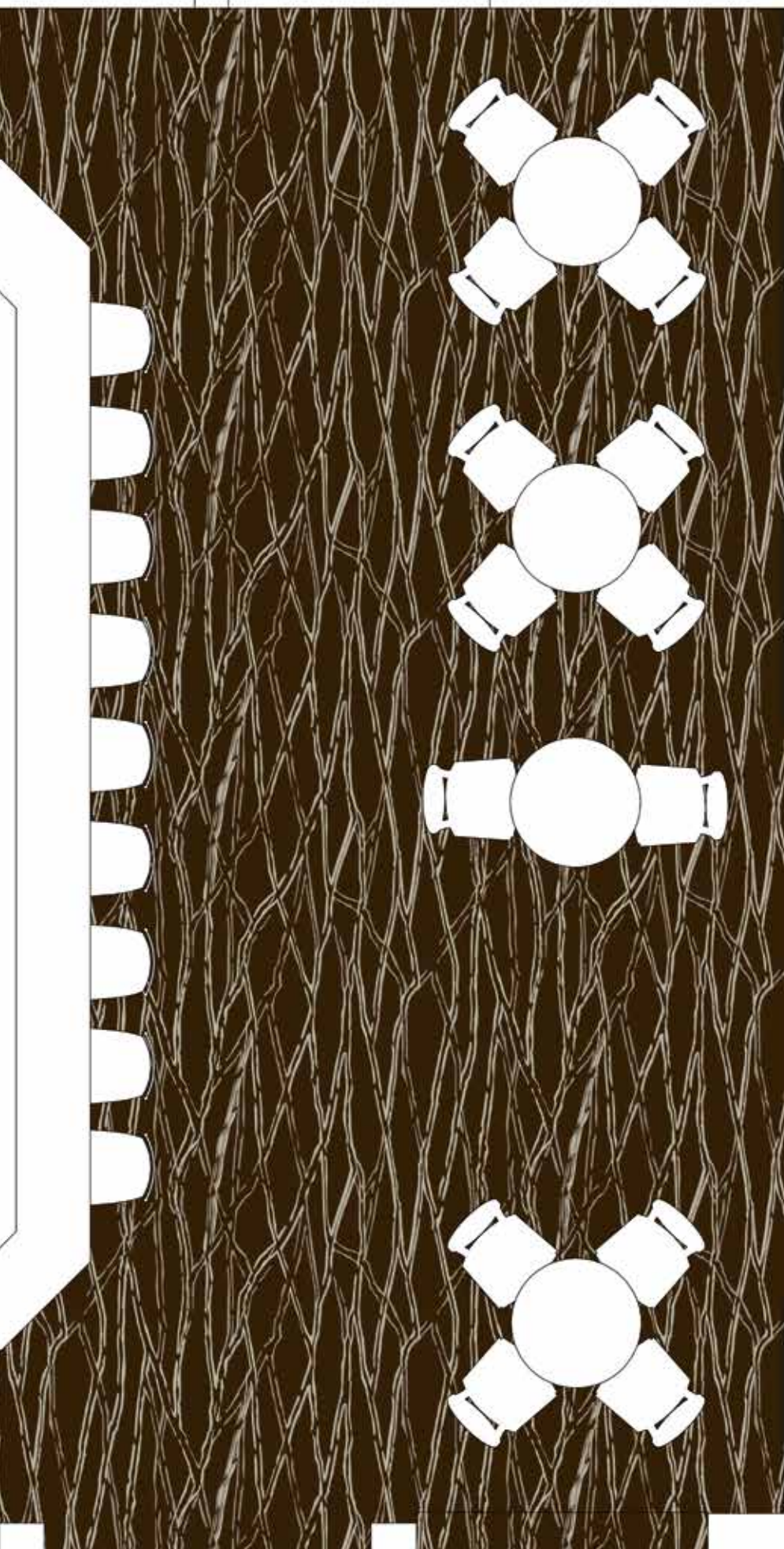
**BROADLOOM RUG**

1 2 6 11

Order #: 00282851  
Pattern repeat:  
81.00" W x 108.00" L

## Soyal

The abstract play of shadow and silhouette define the larger scale patterning in the Soyal grouping. Simplified textures layered with broad-stroke sketches of the overhead tree canopy give a modern choice for public lobby or service area. This installation explores the combination of textures and scale to define bustling common space adjacent to more private conversation areas.



**BROADLOOM LARGE SCALE**  
Order #: 00282856  
Pattern repeat:  
81.00" W x 81.00" L



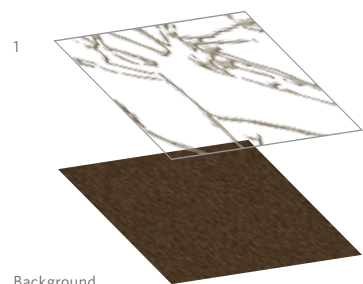
**BROADLOOM SMALL SCALE**  
Order #: 00292558  
No pattern repeat



**BROADLOOM RUG CUSTOM**  
Order #: 00305885  
Pattern repeat:  
116.00" W x 200.00" L

**1** E119 - SOLID





Background

**36" MODULAR TILE - NEUTRAL**



Order #: 00292553  
 Pattern repeat:  
 144.00" W x 36.00" L  
 four tiles

Six tiles shown



**36" MODULAR TILE - BLUE**



Order #: 00292547  
 Pattern repeat:  
 144.00" W x 36.00" L  
 four tiles - random installation

**36" MODULAR TILE - NEUTRAL**



Order #: 00292553  
 Pattern repeat:  
 144.00" W x 36.00" L  
 four tiles - random installation

# Soyal Modular Tile

This 4-tile design on our 36oz or 40oz Grand Plaza modular base provides the ability to create a design floor plan coloration from a standard monolithic pattern. The two-color subtle background of the textured field is layered with large-scale trace of branches allowing for a single accent or a gradation of color across the breadth of the space. Whether tonal neutral or statement accent, this modular pattern is easily customized for brand emphasis or way-finding.

Get more at [etage.milliken.com](http://etage.milliken.com)

Tile 1 shown



36" MODULAR TILE - NEUTRAL



Order #: 00292553  
Pattern repeat:  
144.00" W x 36.00" L  
four tiles

Tile 2 shown



36" MODULAR TILE - YELLOW



Order #: 00292552  
Pattern repeat:  
144.00" W x 36.00" L  
four tiles

Tile 3 shown

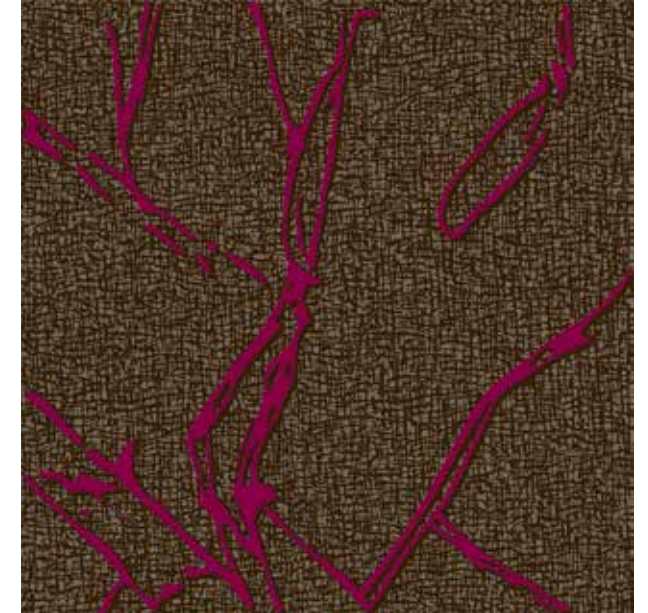


36" MODULAR TILE - ORANGE



Order #: 00292551  
Pattern repeat:  
144.00" W x 36.00" L  
four tiles

Tile 4 shown

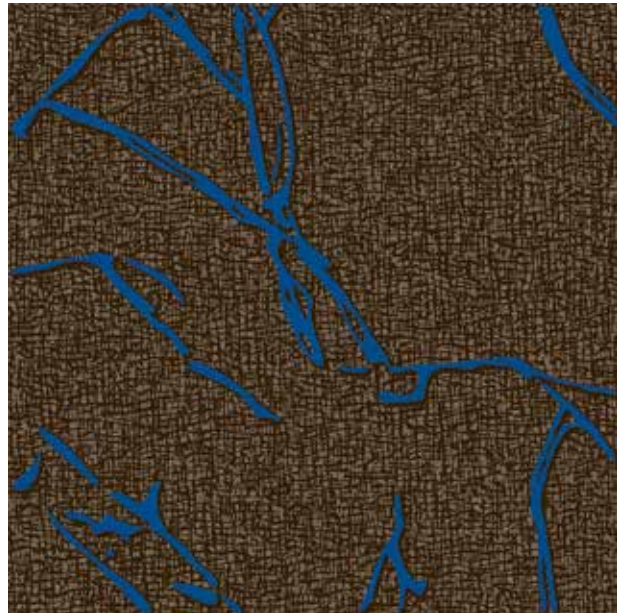


36" MODULAR TILE - FUCHSIA



Order #: 00292546  
Pattern repeat:  
144.00" W x 36.00" L  
four tiles

Tile 3 shown

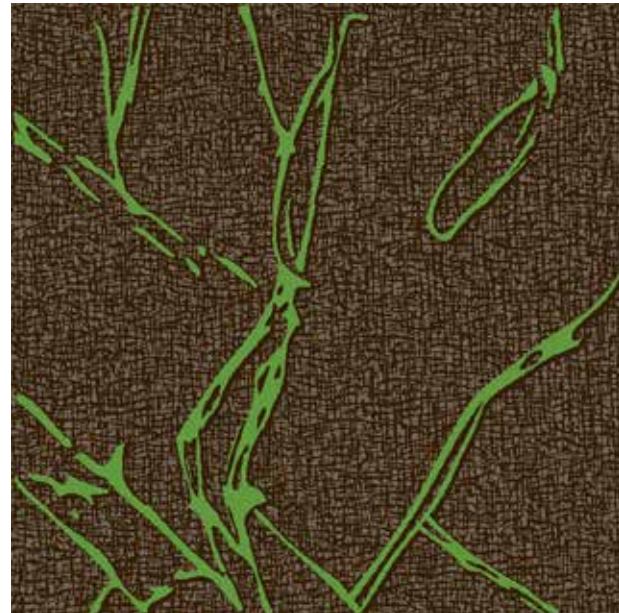


36" MODULAR TILE - BLUE



Order #: 00292547  
Pattern repeat:  
144.00" W x 36.00" L  
four tiles

Tile 4 shown

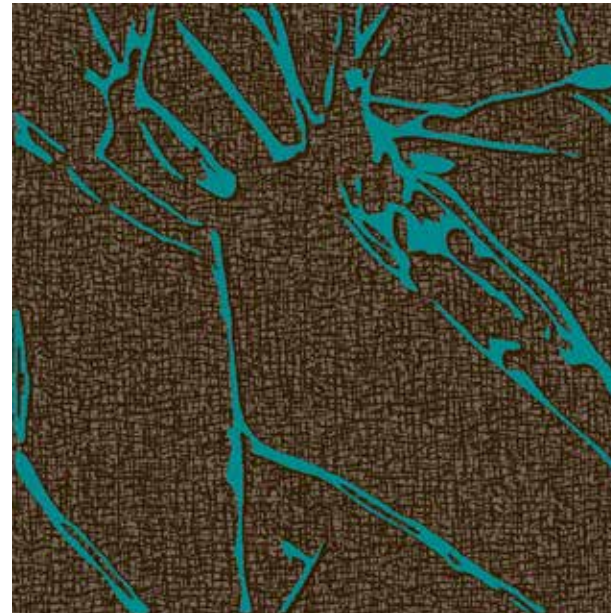


36" MODULAR TILE - GREEN



Order #: 00292549  
Pattern repeat:  
144.00" W x 36.00" L  
four tiles

Tile 1 shown



36" MODULAR TILE - TEAL



Order #: 00292548  
Pattern repeat:  
144.00" W x 36.00" L  
four tiles

36.00"W x 36.00"L shown



36" MODULAR TILE - TEXTURE FIELD

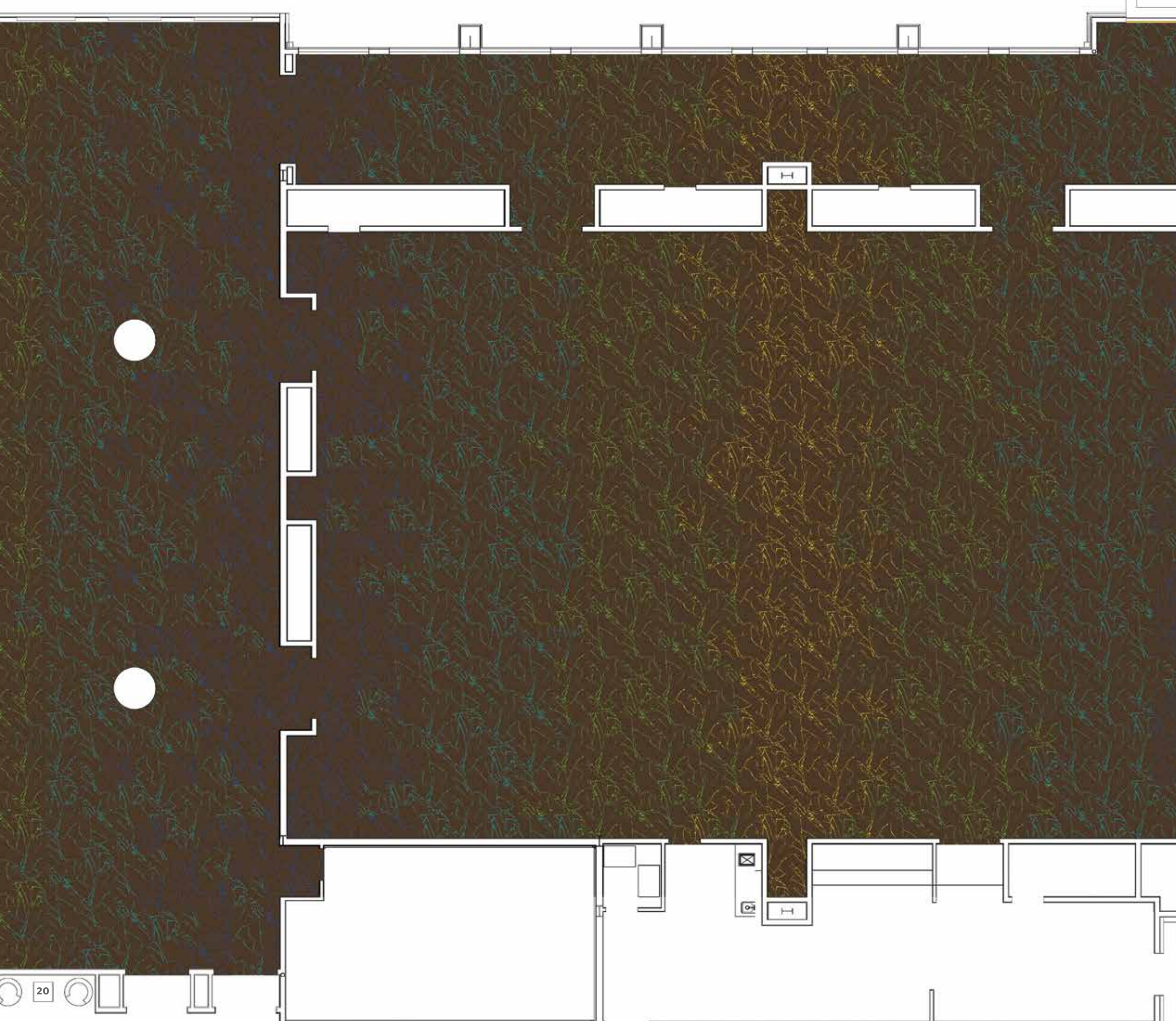


Order #: 00292524  
No pattern repeat  
Tile Size:  
36.00" W x 36.00" L

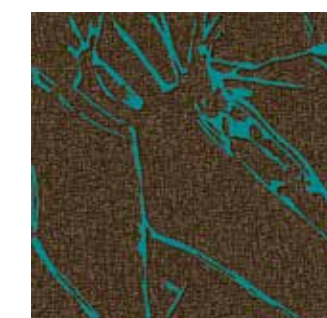
Recommended install - 2 tiles wide. For larger areas, tile joints will be visible and will seam accordingly.

## Soyal Modular Tile

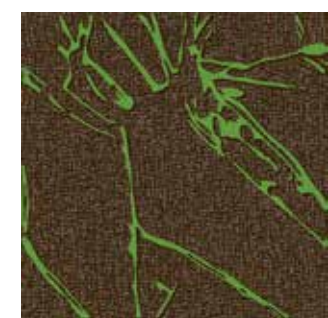
This large meeting space installation explores the custom aspect of the Soyal Modular Tile. A shift between accent colors across the large floor plane provides a functional undulation of color creating a custom floor plan from a standard design. Whether bold and chromatic, or subtle and neutral, this custom feature allows Solstice to transition from public space to private suite, limited only by imagination.



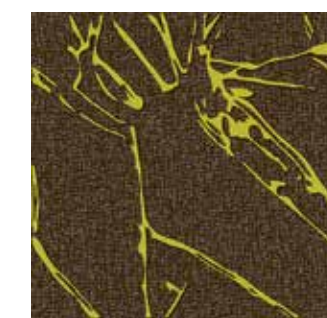
**36" MODULAR TILE - BLUE**  
Order #: 00292547  
Pattern repeat:  
144.00" W x 36.00" L  
*four tiles*



**36" MODULAR TILE - TEAL**  
Order #: 00292548  
Pattern repeat:  
144.00" W x 36.00" L  
*four tiles*



**36" MODULAR TILE - GREEN**  
Order #: 00292549  
Pattern repeat:  
144.00" W x 36.00" L  
*four tiles*



**36" MODULAR TILE -YELLOW**  
Order #: 00292552  
Pattern repeat:  
144.00" W x 36.00" L  
*four tiles*

## Motifs

Single design elements, no repeat, on a transparent background



## How To Use étage

1

Select a design as shown in this brochure, or use étage technology to customize.

Add and subtract design layers and motifs to create your own look. Remember that you must always use at least two layers, one of which must be the background.

2

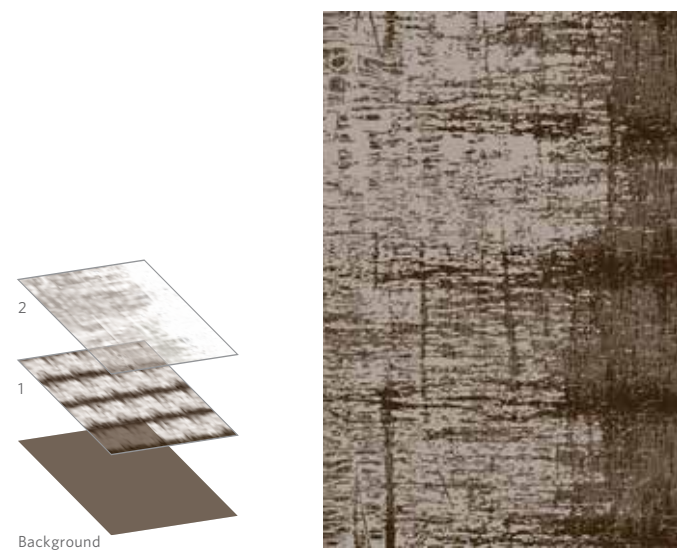
Designs in this brochure use a set of colors intended for this particular collection.

Specific colors used in each design are indicated below each pattern image as a swatch of the color with a number inside it. Refer to the colorway diagram on page 23 to find a corresponding color code. These colors are part of the Milliken Pure Color system.

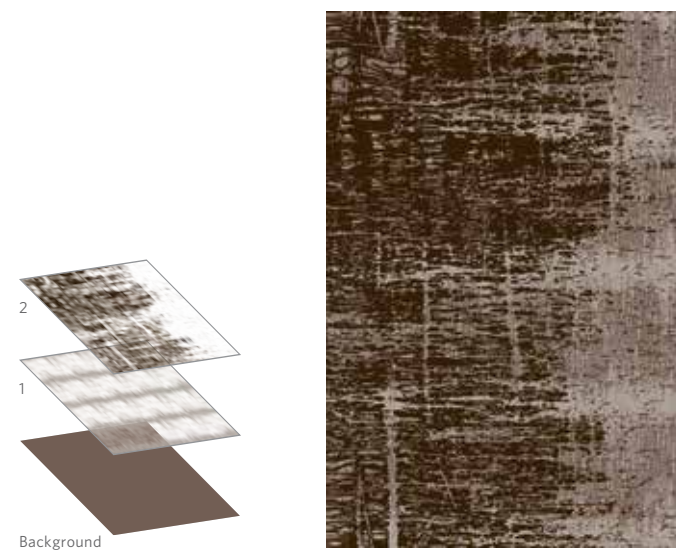
3

Choose a carpet construction that suits your installation.

Contact your Milliken representative to discuss the carpet construction that's best for you.



Designs shown in the brochure are ready to use, but you can also select them as a starting point for customization using étage technology.



No change is too great or too small (like simply choosing different colors from a pre-designed rug/runner).

## Colorway

The Solstice collection has twelve colors from over 1360 options in our Pure Color system.

Get more at [etage.milliken.com](http://etage.milliken.com)

pure|color

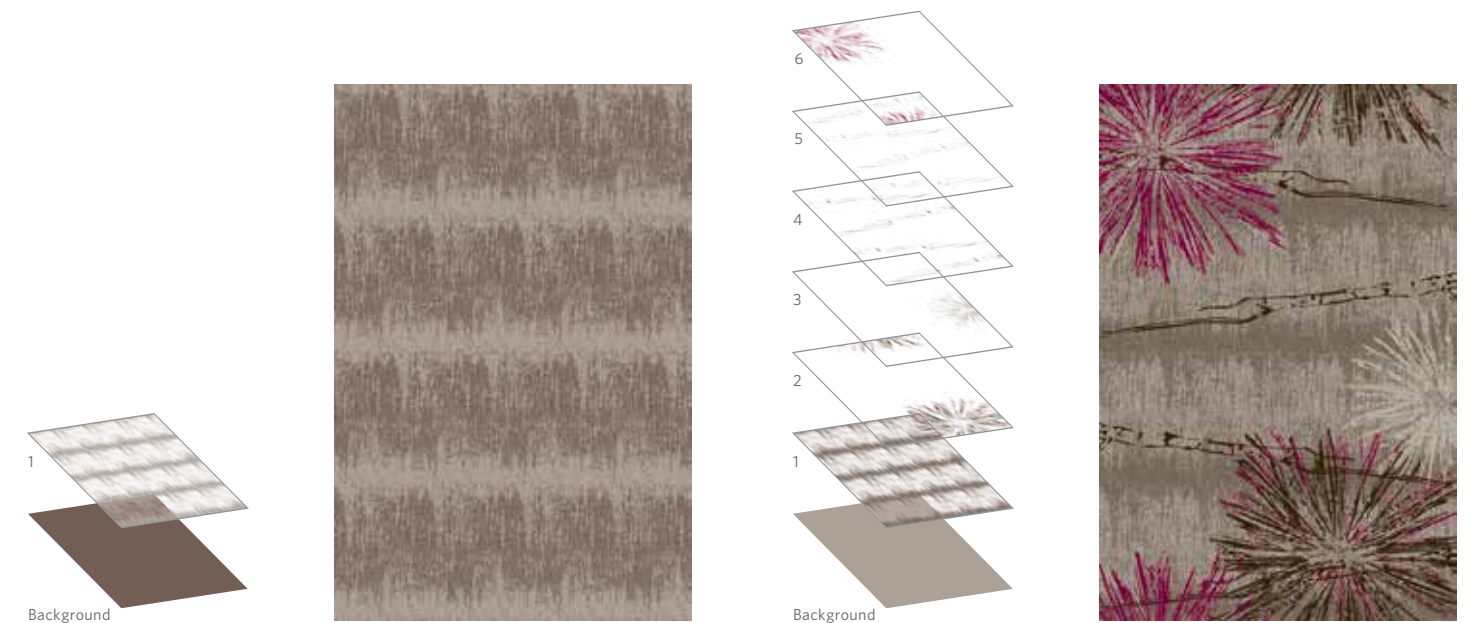
Based on the Natural Color System (NCS), the Pure Color Box lets designers play with the entire color wheel. With over 1360 defined colors and endless options in-between, PureColor makes custom easy.



When it's time to break away from traditional hospitality looks, engage in étage technology.

This all-new process builds a complex pattern, layer by layer. Creating a fully custom look is as simple as choosing and combining layers — layers of organic design elements that defy traditional ideas of symmetry, boxes and borders. Étage technology brings a kind of freedom of design never before known in the hospitality industry.

Each collection includes small-, medium- and large-scale elements for ultimate flexibility in defining rugs, runners and open areas. Combine broadloom and modular and get the best of both. Freedom. Control. It's all here, waiting for an artist's touch. Exclusively from Milliken.

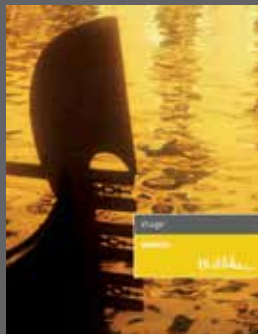
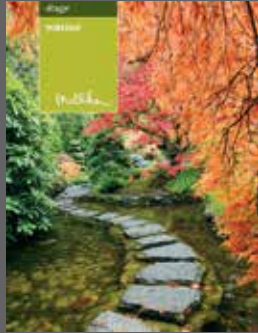


Layers can be added, subtracted, re-ordered, rotated, re-sized and re-colored in any combination to suit your needs.

Best of all, repeating layers and motifs from all étage collections can be used together to create a myriad of designs.

# OTHER DESIGNS IN ÉTAGE

Have you seen all of our patterns? Étage allows you to use design elements from any design collection. Visit us online today and experience all that étage has to offer.



Gold of Platinum Certified  
NSF/ANSI 140 - 2007a  
International Green Association



**Growing greener for over 100 years.**  
Visit [milliken.com](http://milliken.com) for more information.

800.334.7749 (USA and Canada) | [milliken.com](http://milliken.com)  
Design © Milliken & Company | Made in the USA

Cover image: *Tree Detail* by Steve Richards ©2012