



WHALE SONG

Milliken™



INSPIRED.

The inveterate composers of the sea bring music to the earth's waters. The regular and predictable sounds from some of the largest mammals on earth are the most complex in the animal kingdom. Slow and leveling to a constant note or rapidly upswinging to a highly modulated pattern, these complex structures guide and connect us to another world of communication.

Beluga (*left*) and Humpback (*right*) in Marine, ashlar tile installation



INSPIRING.

The Whale Song collection brings four new standard patterns and two made-to-order options to the Milliken solution-dyed offering. These highly textured, loop and tip-sheared patterns were inspired by the sound patterns created by whale communications as well as the environment in which these songs are sung. Stretched and elongated or pixelated to bring greater definition, each pattern offers its own perspective to the floor, and works well with additional products in the Milliken portfolio.

Orca in Breaker (*inset*), Maritime (*field*), and Ice Cap (*catwalk*), ashlar tile installation



Humpback in Algae (foreground) with Rustic Pine LVT in RUS176 (background), ashlar tile installation

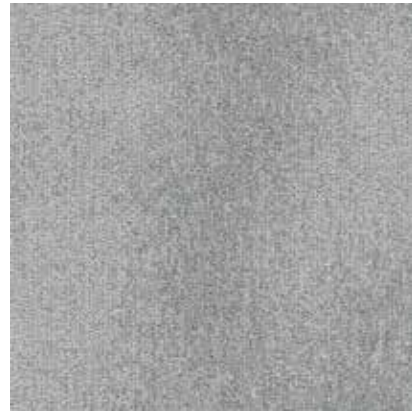
Colorline shown In **Beluga**



BEL208 SANDBAR
(Humpback HUM208, Narwhal NRW208, Orca ORC208)



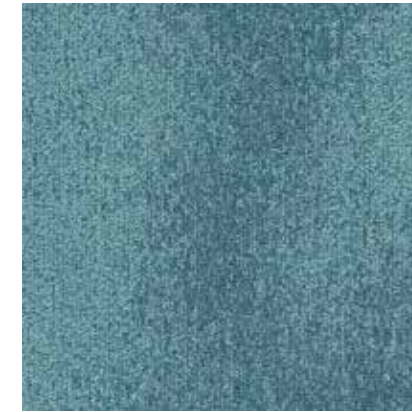
BEL108-204 BRINY
(Humpback HUM108-204, Narwhal NRW108-204, Orca ORC108-204)



BEL209-152 ICE CAP
(Humpback HUM209-152, Narwhal NRW209-152, Orca ORC209-152)



BEL157 SHALLOWS
(Humpback HUM157, Narwhal NRW157, Orca ORC157)



BEL201-161 SALTWATER
(Humpback HUM201-161, Narwhal NRW201-161, Orca ORC201-161)



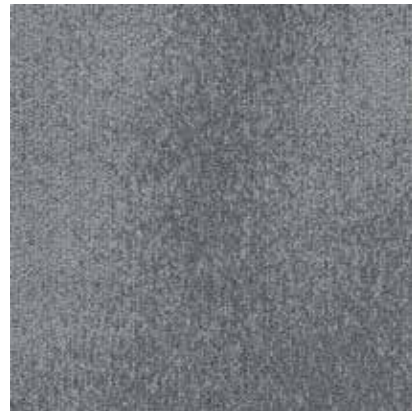
BEL166-45 PLANKTON
(Humpback HUM166-45, Narwhal NRW166-45, Orca ORC166-45)



BEL121-176 KRILL
(Humpback HUM121-176, Narwhal NRW121-176, Orca ORC121-176)



BEL173-174 BARNACLE
(Humpback HUM173-174, Narwhal NRW173-174, Orca ORC173-174)



BEL152-106 BREAKER
(Humpback HUM152-106, Narwhal NRW152-106, Orca ORC152-106)



BEL19 COASTLINE
(Humpback HUM19, Narwhal NRW19, Orca ORC19)



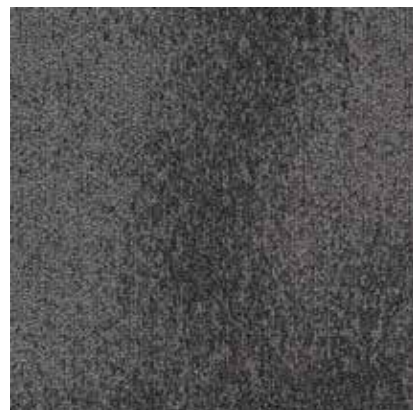
BEL125-201 MARINE
(Humpback HUM125-201, Narwhal NRW125-201, Orca ORC125-201)



BEL45-28 ALGAE
(Humpback HUM45-28, Narwhal NRW45-28, Orca ORC45-28)



BEL164-178 BALEEN
(Humpback HUM164-178, Narwhal NRW164-178, Orca ORC164-178)



BEL119-174 SEABED
(Humpback HUM119-174, Narwhal NRW119-174, Orca ORC119-174)



BEL119-106 MARITIME
(Humpback HUM119-106, Narwhal NRW119-106, Orca ORC119-106)



BEL52 NIGHT TIDE
(Humpback HUM52, Narwhal NRW52, Orca ORC52)



BEL125-107 DEEP SEA
(Humpback HUM125-107, Narwhal NRW125-107, Orca ORC125-107)



BEL28-133 KELP FOREST
(Humpback HUM28-133, Narwhal NRW28-133, Orca ORC28-133)

made-to-order

These two patterns, Kaikoura and Halona, were selected by our design team to inspire your custom projects. These patterns are available at minimum order quantities. See your sales representative for details.



Kaikoura in Breaker (*made-to-order*), ashlar tile installation



Kaikoura in Breaker (*made-to-order*), chevron tile installation



Halona in Breaker (*made-to-order*), ashlar tile installation



WHALE SONG

Beluga/Humpback/Narwhal/Orca

Construction

Tufted, Textured Loop, Tip Shear

Tile Size

50 cm x 50 cm (19.7" x 19.7")

Yarn Type

ECONYL® Solution-Dyed Nylon

Stain Resist / Soil Release

StainSmart®

Finished Pile Height

Beluga: 0.14" (3.56 mm)

Humpback, Narwhal, Orca: 0.15" (3.81 mm)

Finished Pile Thickness

Beluga: 0.107" (2.72 mm); Orca: 0.110" (2.79 mm);

Humpback, Narwhal: 0.139" (3.53 mm)

Average Density

Beluga: 5,618; Humpback: 4,299; Narwhal: 4,196

Orca: 5,498

Standard Backing

PVC-Free WellBAC® Comfort Cushion

Available with TractionBack®

Texture Appearance Retention Rating (TARR)

Heavy Traffic End-Use Applications

Recommended Installation Methods



ASHLAR



V. ASHLAR

SUSTAINABLE FEATURES

Whale Song is manufactured with WellBAC® Comfort cushion backing, and is certified NSF-140 Gold with 46.8% pre-consumer recycled content by total product weight.

Whale Song is also available with our NSF-140 Platinum backing option. All Milliken modular carpets carry Environmental Product Declarations and Health Product Declarations, which contribute to LEED certification. Additionally, Milliken modular carpets carry Declare® transparency labels and comply with the Red List Imperative of the Living Building Challenge.™



TRACTIONBACK®

Simplify your modular installation with Milliken's patented TractionBack®, an innovative backing system that is faster, more cost efficient, and environmentally superior to wet adhesives and peel-and-stick carpet tile.

Images in this brochure are approximate for color and pattern scale. Please use actual carpet samples to make your final selections.

SHOWN ON THE COVER

(Front) Beluga in Breaker

BEL152-106.

(Back) Narwhal in Marine

NRW125-201

Scan to explore the collection story.



Milliken™