

# DISSIDENT & FRINGE

Dissident / Fringe



Dissident



Fringe



PRICE

Milliken™

150  
years of Milliken



**INSPIRED.**  
Conventional ideology may identify those who challenge the status quo as a non-conformist; creators of dissidence and living on the fringe. Embodying a sense of irreverence pushes boundaries and allows us to explore how beauty can be created from that which seems uncommon and outside our boundaries, yet intriguing in a way that captivates our imagination.

Dissident (*foreground*) and Fringe (*background*) in Plat, vertical ashlar and ashlar tile installation



Fringe in Plat, ashlar tile installation



Dissident in Plat, vertical ashlar tile installation

## INSPIRING.

Dissident and Fringe explore layers of texture created from color and construction offering a balance of organic and architectural pattern options for the floor. With a shared color palette influenced by materials such as stone and concrete, these two designs evolve the aesthetic for textural modular carpet.

Get more at [millikencarpetsamplestudio.com](http://millikencarpetsamplestudio.com)



Dissident in Cosmopolitan (right) with Fibre LVT in FIB144 (left), vertical ashlar tile installation

## Colorline shown in Fringe



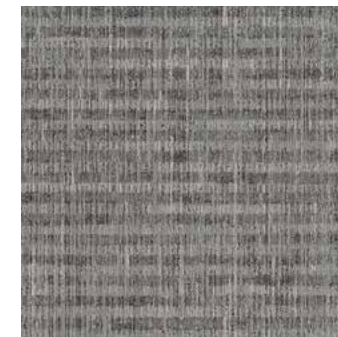
FRG108-139-171 REVIVE  
(Dissident DST108-139-171)



FRG119-73-5 HISTORIC  
(Dissident DST119-73-5)



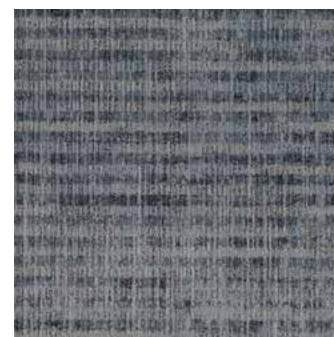
FRG144-139 ASCENT  
(Dissident DST144-139)



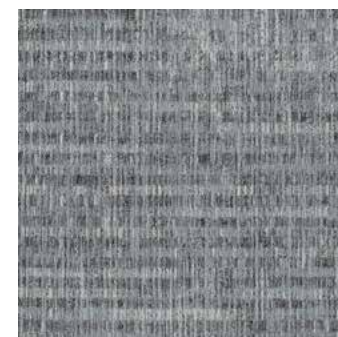
FRG13-173 OMBRE  
(Dissident DST13-173)



FRG174-48-140 COSMOPOLITAN  
(Dissident DST174-48-140)



FRG119-5-107 RELIC  
(Dissident DST119-5-107)



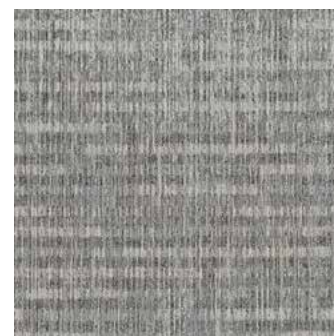
FRG27-153 PLAT  
(Dissident DST27-153)



FRG5-133 OXIDIZE  
(Dissident DST5-133)



FRG79-5 CONCRETE  
(Dissident DST79-5)



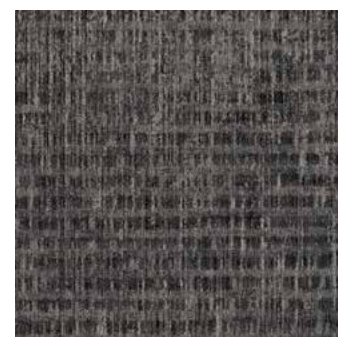
FRG144-108 RESTORE  
(Dissident DST144-108)



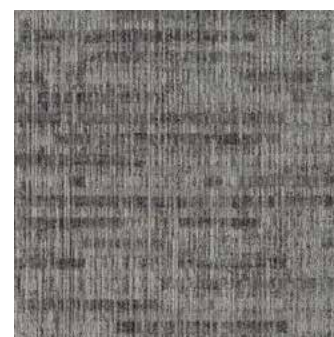
FRG144-165 RECLAMATION  
(Dissident DST144-165)



FRG44-12 SUITE  
(Dissident DST44-12)



FRG120-133 MIDTOWN  
(Dissident DST120-133)



FRG120-122 MASONRY  
(Dissident DST120-122)



FRG122-165-13 WAREHOUSE  
(Dissident DST122-165-13)



FRG133-143 TERRITORY  
(Dissident DST133-143)

# ADVANTAGES OF MILLIKEN CARPET TILE



## Cushion Backing

Comfort Plus® & Underscore™ are Milliken's latest generation cushion backing systems and are standard on Milliken modular carpet products. In addition to providing superior underfoot comfort and significantly improving the carpet's wear performance, these cushion backings also offer ergonomic, acoustic, and environmental benefits.

Milliken cushion backing protects the carpet face from wear and can extend the carpet's life by up to 40%. Acting like an insulating shock absorber, Milliken cushion backings protect against wear, improve appearance retention and enhance comfort and safety. Cushion backing also helps Milliken carpets earn test ratings of Severe in the TARR system.

Milliken cushion-backed carpet tiles are unmatched in moisture management. They stop liquids at the surface and wick moisture away from the sub-floor thereby reducing conditions for mold and mildew growth. By allowing high levels of moisture to be transported through the tile, Milliken modular tiles can handle water vapor emissions up to 85% relative humidity. This unique feature eliminates one less worry about carpet in a high-humidity environment.

### Cushion Improves Acoustics

Much emphasis is placed on the need to reduce unwanted noise in corporate and public spaces. Reducing noise levels can improve comfort, well-being, the ability to concentrate and yield higher performance and productivity. Milliken cushion-backed tiles achieve an improvement in sound absorption performance by absorbing sounds across a wide range of frequencies including those most associated with human speech. Milliken's cushioned carpet tiles absorb up to 50% more noise than hard-backed carpets and up to 12X more than hard surface and rubber flooring. Better yet, the new LEED v4 rewards designers for providing spaces that facilitate better communications by offering up to 2 LEED points. Clearly, acoustics matter.



## TractionBack®

TractionBack® is a remarkable bio-based, high-friction coating that keeps our PVC-free carpet tile securely in-place without additional adhesives, floor sealers or primers. Applied during the manufacturing process, carpet tiles with TractionBack® require no manipulation, additional taping, or gluing steps in the field. Ready to install out-of-the-box makes installation, moving, or replacing Milliken carpet easier on you and the environment.

- Reduces or eliminates the need to prime or seal the floor
- Reduces or eliminates adhesive cost and saves on installation labor
- Eliminates the tools and labor to add other attachment mechanisms to the carpet tile
- Reduces or eliminates time spent spreading wet adhesives and waiting to dry
- Eliminates unnecessary waste like 'peel and stick' film covers
- Reduces or eliminates VOC off-gassing typically associated with floor sealants and adhesives
- allowing faster carpet installation and space habitation
- Stays in place even under high water vapor emissions
- Allows high levels of moisture to be transported through the tile
- Reduces or eliminates damage to raised access floors and high-quality sub-floors, leaving little or no residue
- Tiles can be lifted and re-placed multiple times without losing traction effect



## Sustainable

At Milliken, sustainability is core to our culture. We believe a healthy enterprise and healthy earth are vitally linked. We care about and respect each other, our customers, and the world we share. While we hold ourselves accountable to the highest ethical standards, we derive our greatest satisfaction from creating innovations that help solve the worlds' problems at a human level—adding value to people's lives, improving health and safety, and making this world sustainable.

Milliken has also demonstrated a commitment to transparency by disclosing the components of our commercial carpet tile products through Declare®, a voluntary labeling program and database operated by the International Living Future Institute™, and complies with the Red List Imperative of the Living Building Challenge™.

### Examples of Our Commitment:

- Zero waste to the landfill from our Milliken US carpet manufacturing facilities since 1992.
- 46% of the energy used in the manufacture of our carpet is renewable through company owned hydroelectric facilities and local landfill methane gas harvesting.
- Milliken Carpet tile products have Environmental Product Declarations (EPD's) that are third party certified by Underwriters Laboratory (UL).
- All Milliken Carpet products are free of the 15 Red List chemicals defined in the Living Building Challenge.
- All global Milliken products are third-party certified carbon neutral by the Leonardo Academy. Carbon dioxide created in the manufacturing of all Milliken products globally is offset through company owned sustainably managed forests and green energy producing facilities.
- Product Life Cycle Assessments (LCA) are used for New Product Development. Milliken has used the Design for Environment (DfE) process for our commercial carpet products since 2002.
- Our polyurethane backed cushion increases the life of carpet more than 40%.
- All Milliken Carpet products are 3rd party certified NSF-140 Gold or Platinum.
- All U.S. plants are certified as OSHA VPP STAR Sites.
- All carpet manufacturing sites are ISO-14001 Certified—the highest global standard for environmental responsibility.
- First US carpet manufacturer to obtain carpet manufacturing certification for the ISO 9000 Series Standard for quality.



## StainSmart®

StainSmart® is a proprietary treatment applied to Milliken modular carpets to provide Stain Repel, Stain Resist and Soil Release characteristics. This treatment provides state-of-the-art protection against penetrating stains and soil. It's a dual action technology that enables liquid and oil-based spills to bead up and be easily removed from the carpet. The treatment becomes an inherent part of the carpet so it's durable over years of use, even in high traffic.

**Stain Repel:** StainSmart allows many liquid spills to be blotted and removed easily before they can penetrate beyond the carpet surface.

**Stain Resist:** This chemistry blocks the dye sites of the nylon fiber, lessening the ability of a stain to bond with the fiber.

**Soil Release:** Prevents soil from adhering to or imbedding in the fiber surface and enhances the efficiency of soil removal when proper cleaning techniques are followed.

Milliken warrants that carpet treated with StainSmart will resist soiling and staining during the lifetime\* of the carpet. Proper maintenance is vital to the long-term effectiveness of the StainSmart treatment. Soaps used in wet-cleaning processes, especially spin bonnet, can cause rapid resoiling and effectively negate the protection built into the product. Milliken recommends the MilliCare® Textile and Carpet Care Service Network.

\*Lifetime is defined as the period of time that the original purchaser of the carpet chooses to keep the carpet on the floor at the original installation site.

# DISSIDENT & FRINGE

Dissident / Fringe

Have you seen our other collections? Visit us online today.



Arcadia



Color Field



Identity One



LVT



## Construction

Tufted, Textured Loop

## Tile Size

50 cm x 50 cm (19.7" x 19.7")

## Yarn Type

Milliken-Certified WearOn® Nylon  
Type 6,6

## Stain Repel & Resist / Soil Release

StainSmart®

## Tufted Face Weight

28 oz/yd<sup>2</sup> (949 g/m<sup>2</sup>)

## Finished Pile Height

0.22" (5.59 mm)

## Finished Pile Thickness

0.14" (3.56 mm)

## Average Density

6,917

## Standard Backing

PVC-Free Comfort Plus® ES Cushion  
Comfort Plus® is available with TractionBack®

## Texture Appearance Retention

Rating (TARR)

Heavy

## Recommended Installation Methods



V. ASHLAR  
Dissident



ASHLAR  
Fringe

## TractionBack®

Simplify your modular installation with Milliken's patented TractionBack®, an innovative backing system that is faster, more cost efficient, and environmentally superior to wet adhesives and peel-and-stick carpet tile.



This cushion-back carpet tile product is covered by one or more patents, published applications and/or patents pending. Specifications are subject to normal manufacturing tolerances and may be changed without prior notice.

## Growing greener for over 100 years.

This product has a UL® Environment 3<sup>rd</sup> party verified Environmental Product Declaration (EPD). A copy of the EPD is available online at [millikencarpet.com/epd](http://millikencarpet.com/epd) and [productguide.ulenvironment.com](http://productguide.ulenvironment.com).

Customer Concierge 800.824.2246 | [millikenfloors.com](http://millikenfloors.com)  
© 2015 Milliken & Company | Design © Milliken & Company | Made in the USA

Cover image: *Old abandoned rundown gray facade of glass windows*, by gallofoto. © 2015 Shutterstock

2710025666  
CP 0915