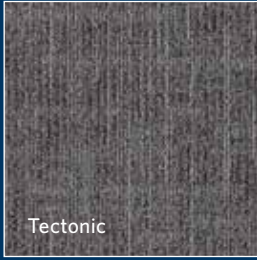


NORDIC STORIES

Isograd / Tectonic / Hidden Plains



Isograd



Tectonic



Hidden Plains



Milliken®





INSPIRED. INSPIRING.

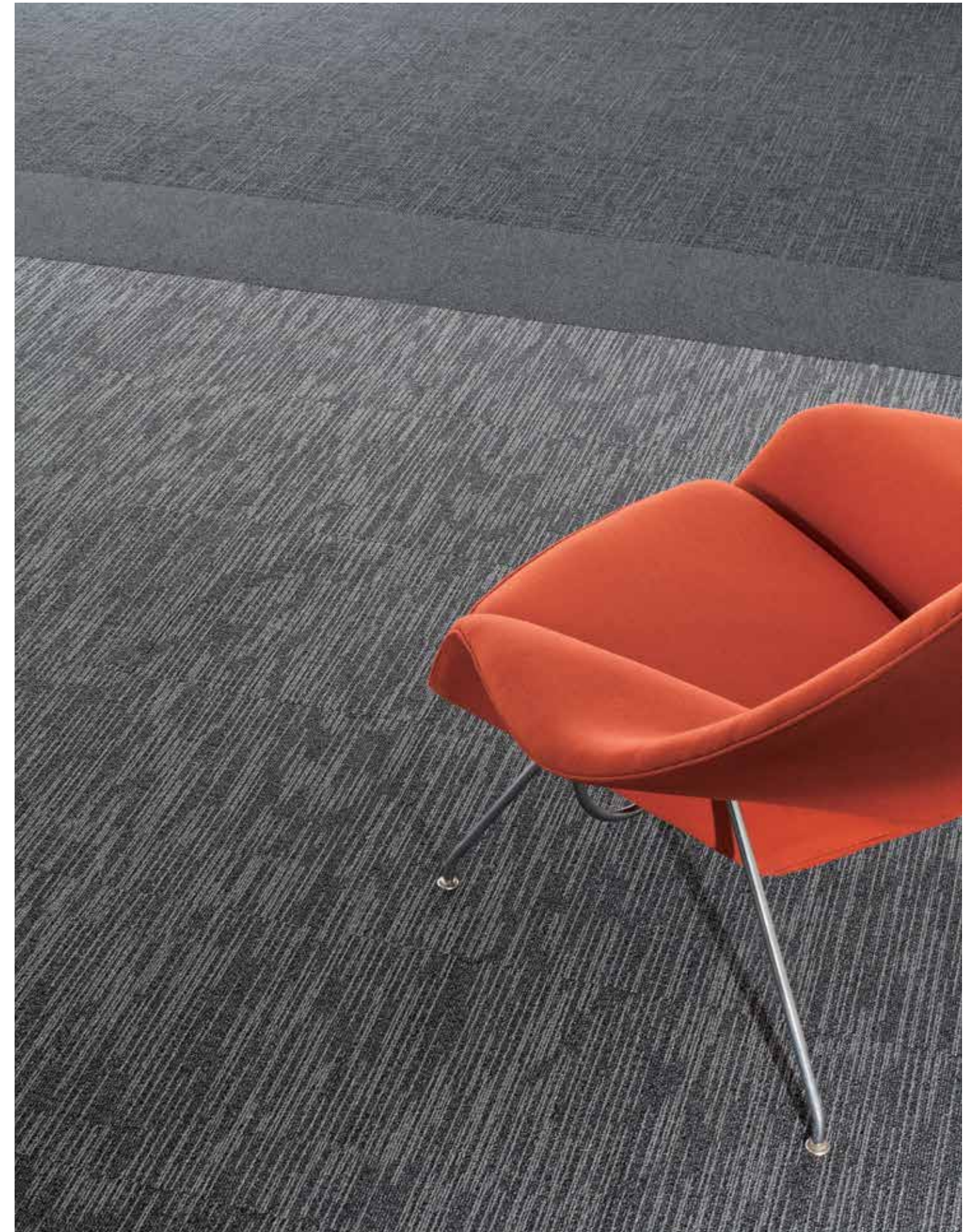
源于灵感 智启灵感

Our travels have taken us to extreme environments: the surreal contrasts of Iceland, a country powered by nature and made up of sulphurous plains, salt terraces and geothermal pools. This is geological drama at its best, a place where isolation and dark winters create the backdrop to a unique breed of creativity. In contrast the gentle landscape of Denmark. A country peppered with archipelagos and lush forests and home of 21st Century design, where form and function meet utopian ideology.

Nordic Stories is inspired by the textural landscape, geological extremes, folklore and modern culture of the Northern Hemisphere. Muted natural tones, black volcanic rock, deep blue lakes, rich golden moss, graphic landforms and bold architecture. This Collection represents the sensory experience that is the Nordics, a series of diverse countries with distinct identities that have collectively helped to define contemporary design culture.



Isograd in Esker, monolithic installation



(top to bottom) Tectonic in Ash Blanket, Formwork 2.0 in Gable and Isograd in Esker, monolithic installation





Tectonic in Ash Blanket, monolithic installation



Isograd in Flume monolithic installation



Hidden Plains in Spiritland, monolithic installation



Hidden Plains in Lahar, monolithic installation



Tectonic in Lahar, monolithic installation



Isograd in Lahar, monolithic installation

COLORLINE



IGD48-124 TWILIGHT



IGD121-145 SCHISTS



IGD124-94 SANDPIPER



IGD94-59 NORSE



TTC48-124 TWILIGHT



TTC121-145 SCHISTS



TTC124-94 SANDPIPER



TTC94-59 NORSE



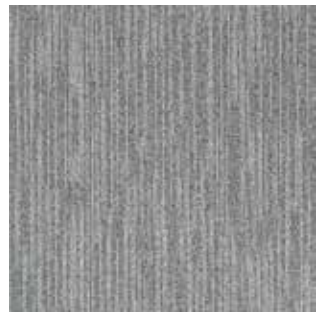
IGD120-178 ORES



IGD133-59 ALLUVIUM



IGD108-122 ESTUARY



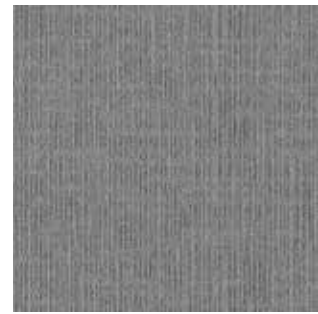
IGD180-138 SNOWMELT



TTC120-178 ORES



TTC133-59 ALLUVIUM



TTC108-122 ESTUARY



TTC180-138 SNOWMELT



IGD122-120 SPIRITLAND



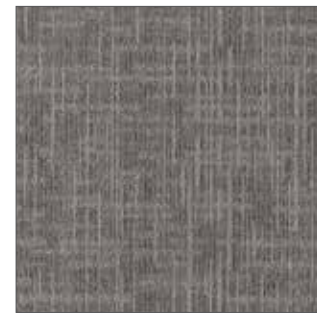
IGD108-13 FJORD



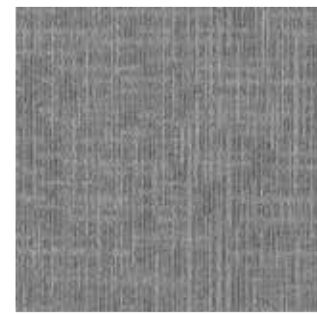
IGD133-120 FLUME



IGD67-59 LAHAR



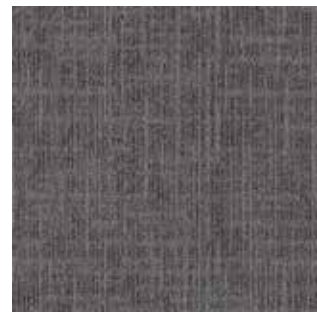
TTC122-120 SPIRITLAND



TTC108-13 FJORD



TTC133-120 FLUME



TTC67-59 LAHAR



IGD6-108 AEOLIAN



IGD153-5 MINERAL



IGD13-119 ESKER



IGD157-178 ARCTIC OCEAN



TTC6-108 AEOLIAN



TTC153-5 MINERAL



TTC13-119 ESKER



TTC157-178 ARCTIC OCEAN



IGD119-27 ASH BLANKET



IGD19-27 KYANITE



TTC119-27 ASH BLANKET



TTC19-27 KYANITE

COLORLINE



HDP48-124 TWILIGHT



HDP121-145 SCHISTS



HDP124-94 SANDPIPER



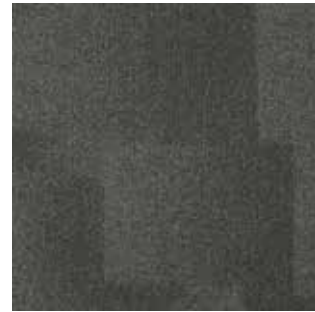
HDP94-59 NORSE



HDP120-178 ORES



HDP133-59 ALLUVIUM



HDP108-122 ESTUARY



HDP180-138 SNOWMELT



HDP122-120 SPIRITLAND



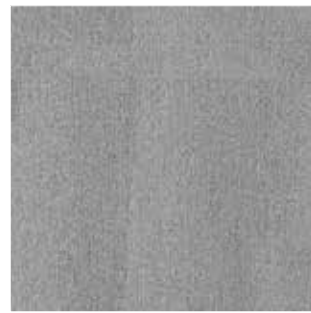
HDP108-13 FJORD



HDP133-120 FLUME



HDP67-59 LAHAR



HDP6-108 AEOLIAN



HDP153-5 MINERAL



HDP13-119 ESKER



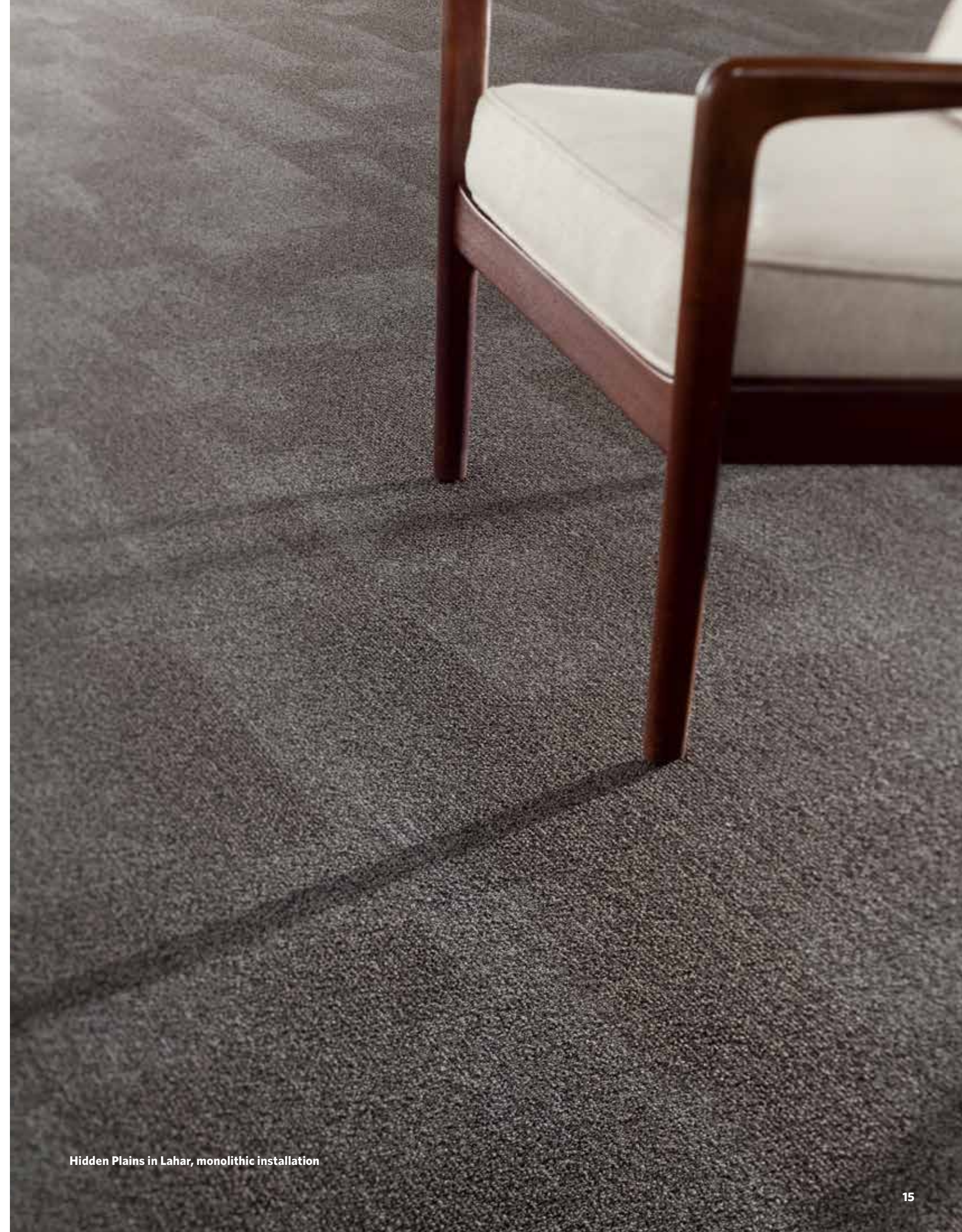
HDP157-178 ARCTIC OCEAN



HDP119-27 ASH BLANKET



HDP19-27 KYANITE



Hidden Plains in Lahar, monolithic installation

NORDIC STORIES

Isograd / Tectonic / Hidden Plains

SPECIFICATION

Construction - Tufted, Textured Loop

Tile Size - 50cm X 50cm (19.7" X 19.7")

Face Fiber - 100% Milliken Certified Nylon

Dye Method - Solution Dyed

Standard Backing - PVC-Free WellBAC™ Comfort
Available with TractionBack®

Nominal Total Thickness - 8.2 mm AVG. (Isograd)
8.4 mm AVG. (Hidden Plains/Tectonic)

PERFORMANCE

Flammability - ≥ 0.45 (Class I)

Texture Appearance Retention Rating (TARR) - Severe

Indoor Air Quality - CRI Green Label Plus™ - GLP100130, Carpet Category 13X

Installation Method 安装方式:



Monolithic
同一方向安装

技术指标

结构 - 簇绒织造圈绒结构

产品尺寸 - 50 厘米 X 50 厘米 (19.7 X 19.7 英寸)

表层纤维 - 100% 美利肯认证尼龙

染色技术 - 原液染色

标准底垫 - 不含 PVC 之 WellBAC™ Comfort 舒适软底
可选装 TractionBack® 免胶

额定总厚度 - 8.2 毫米 平均 (Isograd)
8.4 毫米 平均 (Hidden Plains/Tectonic)

产品性能

阻燃性 - ≥ 0.45 (一级)

外观保持等级 (TARR) - 重度商业使用

室内空气质量 CRI Green Label Plus™ - GLP100130, 地毯类别 13X

TractionBack®

Simplify your modular installation with Milliken's patented TractionBack®, an innovative backing system that is faster, more cost efficient, and environmentally superior to wet adhesives and peel-and-stick carpet tile.



Declare.

Milliken

China
North & North West &
South West Of China
T +86 10 6465 1206
T +86 133 0101 8460
South of China &
HK & Macau
T +86 181 1743 0032
East & Central of China
T +86 21 6145 1758

India
Bangalore
T +91 98408 98963
Delhi
T +91 95010 11800
Hyderabad
T +91 99631 64059
Mumbai
T +91 98926 00362

Rest of Asia
Manila
T +63 915 816 7127
Seoul
T +82 2 3783 0747
Singapore
T +65 6593 1301
Tokyo
T +81 3 5203 8406
Jakarta
T +6221 2960 7222



www.millikencarpet.com

2710027460

Issued Dec 2019