

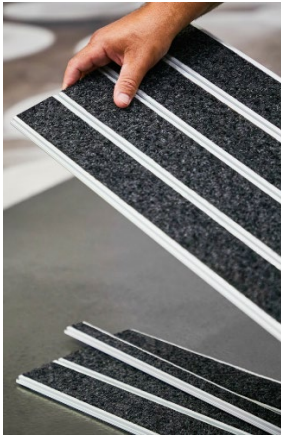


OBEX™ Bar – Plank Installation and Maintenance

General

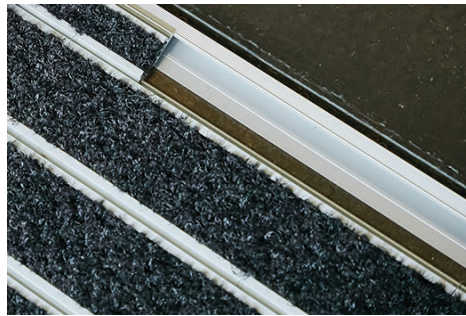
OBEX™ Bar is a unique patented aluminum click-in profile system, available in a 11 mm thick closed construction, which allows cleaning in place. OBEX Bars are available in two material options, Mono and CutX insets. Each OBEX Bar Plank is a pre-assembled four profile plank measuring 27.6 cm (10 7/8") x 1 m (39 3/8"). Each box of OBEX™ Bar contains seven planks, or 1.93 m² (2.3 yd²) of product. In addition to the field product, you will need transition and or edge pieces. We offer both a recessed mount kit and a surface mount kit.

OBEX Bar Plank



Recessed and surface mounted transition kits are required with each install, details of each kit below:

Recessed Kits



Surface Mount Kits



Transition Kits

To complete a recessed install of OBEX Bar you will need to order a Recessed Mount Kit and Half Profiles of corresponding material used for Planks

Recessed Kit contains the following:

- J profiles: 4 pieces 2m in length – used on leading and trailing edge of install to adjust length of install.
 - L profiles: 4 pieces 2m in length – optional, used on sides of install.
 - 5 mm aluminum spacers: 2 pieces 2 m in length – optional, used to adjust length of install.
- Sold separately, shipped in cardboard tube.

Half Profile Kit contains the following:

- Half profiles of either Mono or CutX: 2 pieces 2m in length – used to adjust length of install.
- Sold separately, shipped in cardboard tube.

To complete a surface install of OBEX Bar you will need to order a Surface Mount Kit.

Surface Mount Kit contains the following:

- Start / Finish Ramps: 4 pieces 2m in length – used as transition on leading and trailing edge of install.
 - Side Ramps: 4 pieces 2m in length – used as transition on sides of install.
 - Corners: 6 pieces – used to connect Start/Finish and Side Ramps to each other
 - Connectors: 6 pieces – used to 2m sections of Start/Finish or Side Ramps together
 - Allen Wrench: used on corners and connectors
- Sold separately, shipped in cardboard tube.

Subfloor Preparation

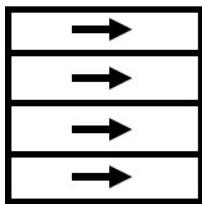
Ensure subfloor is level, clean and free of contaminants. If greasy, clean with degreaser and prime. Use levelling compounds if necessary. It may also be necessary to screed up the recess, when depth is more than 11 mm. Subfloor flatness is critical requiring 1/16" in 6'.

Installation

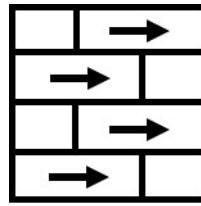
OBEX Bar Planks are extremely easy to install on site thanks to its click-in profile system. Simple tools such as an electric handsaw, and/or miter saw with fine tooth saw blade if adjustment on site is required. The OBEX Bar requires the purchase of Recessed Kit and Half Profile for recessed installations and the Surface Mount Kit for surface mounted installs.

Installation Options (recessed or surface mount)

If installation area width is less than or equal to 1 m x 1 m, a monolithic installation is recommended. For areas greater than 1 m, planks should be installed in an ashlar method. Plank cut edges should be placed along the exterior edge and can be covered with the "L" profile (optional).



Monolithic Bar Panels

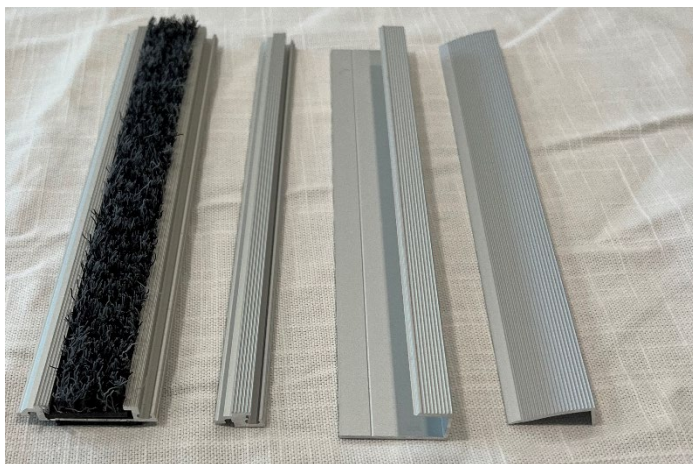


Ashlar Bar Panels

1. OBEX Bar Planks are packed in boxes containing seven planks, one meter in length.

Surface Mount Kits, Recessed Kits, and Half Profiles are shipped in a cardboard tubes (2 meters in length). Kit components can be cut to the specified length and lengths greater than 2 meters will require utilization of multiple components. Remove all materials and prepare surface for installation.

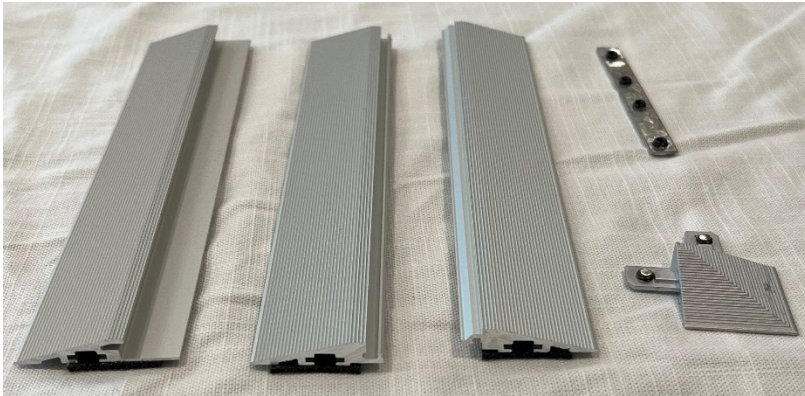
Recessed Kit Contents



Items in image (left to right)

1. OBEX Half Bar
2. 5mm aluminum spacer
3. J - Profile
4. L - Profile

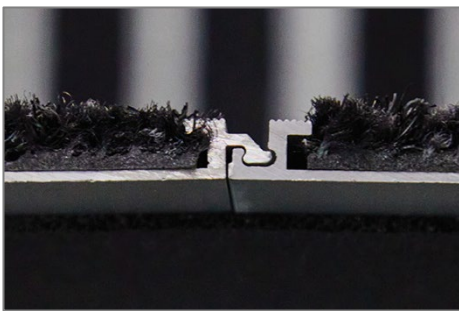
Surface Mount Kit Contents



Items in image (left to right)

1. Side Ramp
2. Start Finish Ramp - male connector
3. Start Finish Ramp - female connector
4. Corner
5. Ramp Connector

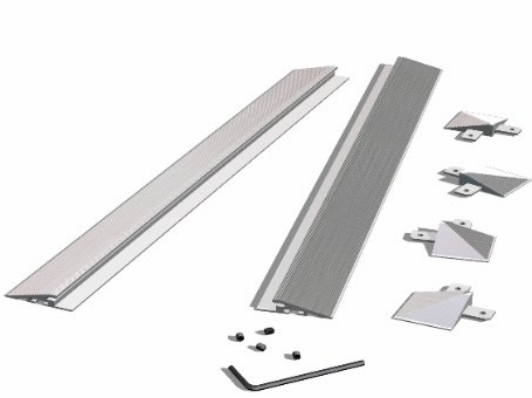
2. OBEX Bar Planks are extremely easy to install on site thanks to the patented aluminum click-in system, which secured the planks together. Planks have a standard 2 mm high density polyethylene foam backing to reduce noise and allow gluing to subfloor. The subfloor must be level.



3. For recessed or wall to wall installations a "J-Profile" is used to start and finish the installation. Transitional width and spacer components included in the Recessed Mount Kit and Half Profiles are used to adjust length of install. You can deconstruct a plank down to one profile by scoring the foam backing and disassembling the individual profiles in a plank. One profile has a dimension of 69 mm, and a Half Profile has a dimension of 33 mm. The Recessed Kit contains a 5mm aluminum spacer and J profile which combined will allow installer to adjust length without the need to cut/rip a profile. The Recessed Mount Kit also contains a L profile piece which can be used on the sides of the install to create a cover over all four sides. Use of the L profile is optional, customer preference.

For answers to questions about OBEX™ installation procedures, please contact Milliken at:
1-800-528-8453 (Select Option 2 @ prompt for Quality Assurance)

4. For surface mounted installations the Surface Mount Kit contains all aluminum edging required to complete a square or rectangular surface install. Surface mounted installs have the option being free-laid or secured. Two options for securing your install are adhesive or lag into the concrete.



Additional Notes

- It is very important to make an accurate estimate. Sometimes the installation can need more time than the calculated.
- When you install staggered profiles, leave the part of the profile cut by you to the extremes, not to the joint. The cut made at the factory is always better joint to joint.
- You can use aluminium colour silicone to fill a gap.
- Surface installs have the option of free-lay or affixed to the floor, glued or screws can be used.
 - Floor substrate will dictate type of screws to be used.
 - Screws are placed on the edge just in from the transition strip.
 - Screws are placed 1 every 3' to 4' linear feet.

Maintenance

OBEX Bar feature a unique textile with an open construction for easy dirt release when cleaning. The closed structure of the profile system allows cleaning on site without having to move or lift the product. Standard maintenance protocol is daily vacuuming and hot water extraction for deep cleaning.