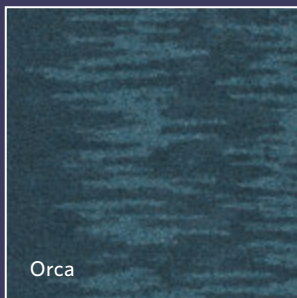
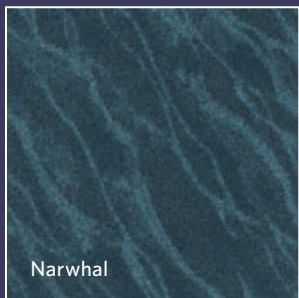
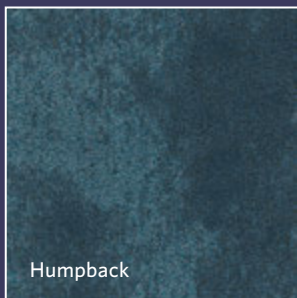




WHALE SONG

Beluga / Humpback / Narwhal / Orca



Ontera
A MILLIKEN COMPANY



Beluga (*left*) and Humpback (*right*) in Marine, ashlar tile installation



INSPIRED.

The inveterate composers of the sea bring music to the earth's waters. The regular and predictable sounds from some of the largest mammals on earth are the most complex in the animal kingdom. Slow and leveling to a constant note or rapidly upswinging to a highly modulated pattern, these complex structures guide and connect us to another world of communication.



Orca in Marine, ashlar tile installation



Narwhal in Marine, ashlar tile installation



Orca in Breaker (*inset*), Maritime (*field*), and Ice Cap (*catwalk*), ashlar tile installation



INSPIRING.

The Whale Song collection brings four new standard patterns to the Ontera solution-dyed offering. These highly textured, loop and tip-sheared patterns were inspired by the sound patterns created by whale communications as well as the environment in which these songs are sung. Stretched and elongated or pixelated to bring greater definition, each pattern offers its own perspective to the floor, and works well with additional products in the Ontera portfolio.



Humpback in Algae, ashlar tile installation



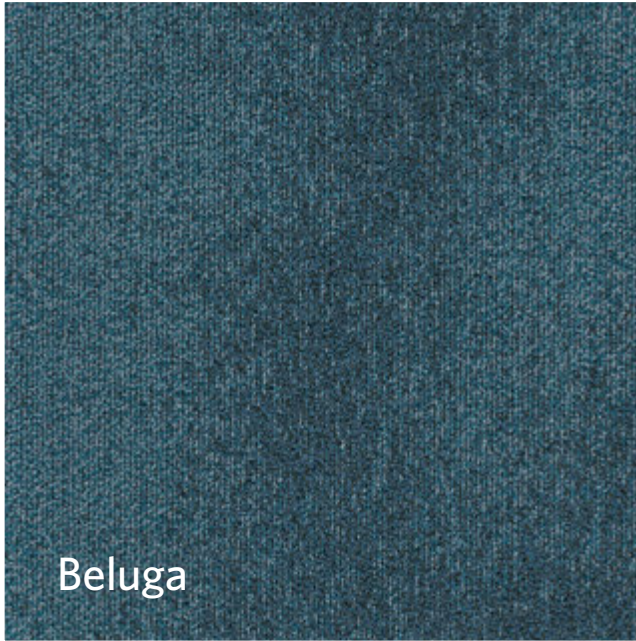


Humpback in Breaker, monolithic tile installation



Beluga in Breaker, ashlar tile installation

DESIGN Shown in Marine



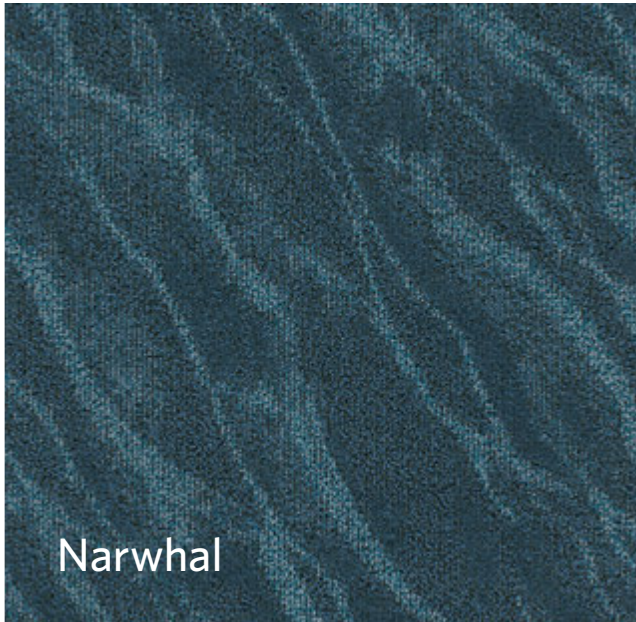
Beluga

Imagining the effect of sound as it dissipates through the waters, Beluga creates a modern solid for the floor. This textural gradation softens as it moves throughout the space, creating an interior where movement is purposeful, yet quiet.



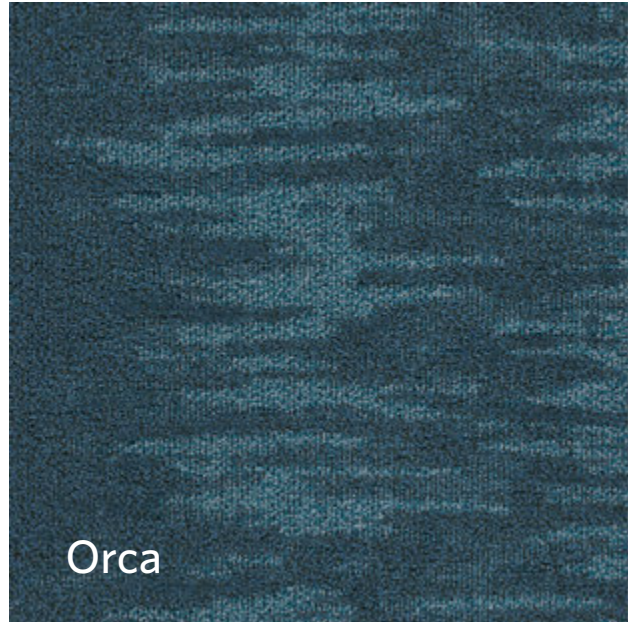
Humpback

Communication is vital for a whale's foraging and connection with its pod. With the humpback pattern, we think of the landscape under the water which is as diverse as we see on land. The ebb and flow of Humpback allows a mixture of scale within the pattern while balancing positive and negative areas.



Narwhal

Sound moves faster through water than it does through air; four times faster. Narwhal explores the motion of sound through the oceans' waters, providing a more flowing diagonal that softens movement on the floor while keeping interest and sophistication.



Orca

Reflective of the sound wave patterns created by whales when communicating, Orca creates a stimulating yet sophisticated carpet. This varying scale and level of contrast offers a new thought on how a pattern can be both angular and organic. The density of movement in the pattern creates a floor plane that invigorates and soothes.



Beluga (*left*) and Humpback (*right*) in Marine, ashlar tile installation

COLOURLINE

Shown in Beluga



BEL208 SANDBAR
(Humpback HUM208, Narwhal NRW208, Orca ORC208)



BEL108-204 BRINY
(Humpback HUM108-204, Narwhal NRW108-204, Orca ORC108-204)



BEL209-152 ICE CAP
(Humpback HUM209-152, Narwhal NRW209-152, Orca ORC209-152)



BEL121-176 KRILL
(Humpback HUM121-176, Narwhal NRW121-176, Orca ORC121-176)



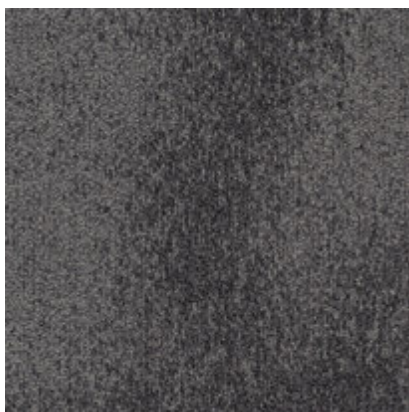
BEL173-174 BARNACLE
(Humpback HUM173-174, Narwhal NRW173-174, Orca ORC173-174)



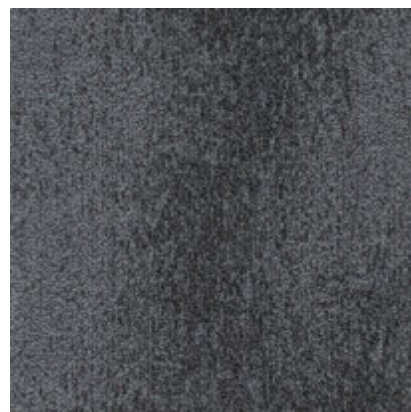
BEL152-106 BREAKER
(Humpback HUM152-106, Narwhal NRW152-106, Orca ORC152-106)



BEL164-178 BALEEN
(Humpback HUM164-178, Narwhal NRW164-178, Orca ORC164-178)



BEL119-174 SEABED
(Humpback HUM119-174, Narwhal NRW119-174, Orca ORC119-174)



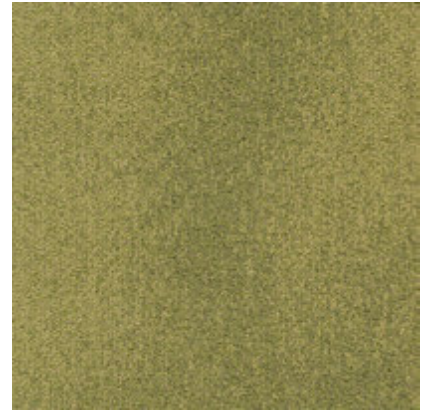
BEL119-106 MARITIME
(Humpback HUM119-106, Narwhal NRW119-106, Orca ORC119-106)



BEL157 SHALLOWS
(Humpback HUM157, Narwhal NRW157, Orca ORC157)



BEL201-161 SALTWATER
(Humpback HUM201-161, Narwhal NRW201-161, Orca ORC201-161)



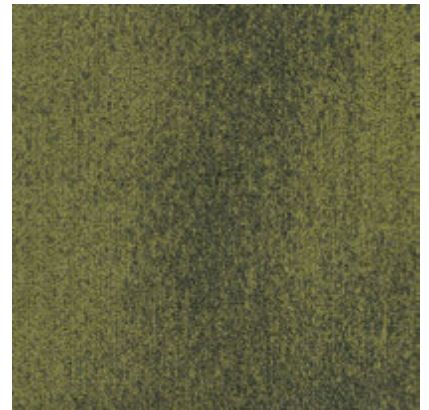
BEL166-45 PLANKTON
(Humpback HUM166-45, Narwhal NRW166-45, Orca ORC166-45)



BEL19 COASTLINE
(Humpback HUM19, Narwhal NRW19, Orca ORC19)



BEL125-201 MARINE
(Humpback HUM125-201, Narwhal NRW125-201, Orca ORC125-201)



BEL45-28 ALGAE
(Humpback HUM45-28, Narwhal NRW45-28, Orca ORC45-28)



BEL52 NIGHT TIDE
(Humpback HUM52, Narwhal NRW52, Orca ORC52)



BEL125-107 DEEP SEA
(Humpback HUM125-107, Narwhal NRW125-107, Orca ORC125-107)



BEL28-133 KELP FOREST
(Humpback HUM28-133, Narwhal NRW28-133, Orca ORC28-133)

WHALE SONG

Beluga / Humpback / Narwhal / Orca

Images in this brochure are approximate for colour and pattern scale. Please use actual carpet samples to make your final selections.

SPECIFICATION

Construction

Tufted, Textured Loop, Tip Shear

Tile Size

50 cm x 50 cm

Yarn Type

ECONYL® Solution-Dyed Nylon Type 6

Stain Repel & Resist / Soil Release

StainSmart®

Antimicrobial

AlpAlphaSan® AF Built-In Protection

Tufted Face Weight

17.5 oz/yd² (595 g/m²)

Tufts

139/in² (2,153/100 cm²)

Finished Pile Height

Beluga: 0.14" (3.56 mm)

Humpback: 0.15" (3.81 mm)

Narwhal: 0.15" (3.81 mm)

Orca: 0.15" (3.81 mm)

Standard Backing

PVC-Free Underscore™ ES Cushion

Recycled Content by Total Weight

ES Backing: Up to 46.8% Pre-Consumer

Up to 19.1% Post-Consumer

Nominal Total Thickness

0.31" (7.9 mm)

Nominal Total Weight

93.1 oz/yd² (3,157 g/m²)

Indoor Air Quality

Pass (ISO10580:2010.)

Warranties

15 Year Product Warranty

Recommended Installation Methods



ASHLAR



V. ASHLAR

TractionBack®

Simplify your modular installation with Milliken's patented TractionBack®, an innovative backing system that is faster, more cost efficient, and environmentally superior to wet adhesives and peel-and-stick carpet tile.

This cushion-back carpet tile product is covered by one or more patents, published applications and/or patents pending. Specifications are subject to normal manufacturing tolerances and may be changed without prior notice.



Declare.



green building council australia
MEMBER



Ontera
A MILLIKEN COMPANY

Australia

Toll Free: 1800 668372

New Zealand

Toll Free: 0800 668372



Growing greener for over 100 years.

Visit milliken.com for more information.

Cover image: Deep under the ocean,
by solarseven. © 2015 Shutterstock