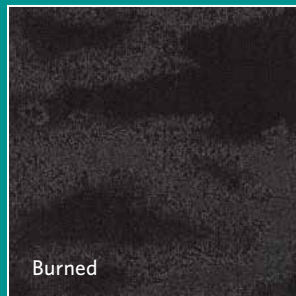




SURFACE STUDY

Burned / Distressed / Washed



150

years of *Milliken*

Milliken™



INSPIRED.

Deliberate or naturally occurring, material transformations offer a contradiction of beauty arising from damage or aging. Whether irregular or structured, the resulting elegance can be unexpected. This new, reinvented surface challenges our acceptance of where materials can be pushed to emulate luxury, fragility, simplicity; yet offer the strength of high performance flooring.

Distressed with Burned in Ripple, ashlar tile installation



Washed in Ripple, vertical ashlar tile installation



INSPIRING.

Three approaches of surface transformation are explored in this collection: Burned, Washed, Distressed. Each inspires an intentional balance of texture and irregularity to offer a floor plane that lies quietly or makes a statement.

Burned in Fresh, ashlar tile installation



Distressed in Fresh with Panoramic in Bounce, ashlar tile installation



Get more at millikencarpetsamplestudio.com

Impasto (made-to-order) and Washed in Lustre, ashlar tile installation

Surface Study offers a variety of tip-shear and loop textures.

Burned: No two materials render the same pattern or result when burned. We reflect this sense of uniqueness to create flexibility and a one-of-a-kind appearance through each installation.

Distressed: Vintage materials with an edge from distressing offer scale for the floor with a sophisticated, yet approachable aesthetic.

Washed: Fresh and simple, this classic Americana styling offers a smooth undulation of texture reflected from time-influenced use and love of the material.

STANDARD PATTERNS
Burned, Distressed and Washed (left to right) in Lustre

made-to-order

These three patterns were selected by our design team to inspire your custom projects. These patterns are available at minimum order quantities. See your sales representative for details.



Weathered (*made-to-order*) in Lustre, ashlar tile installation



Impasto (*made-to-order*) in Lustre, vertical ashlar tile installation

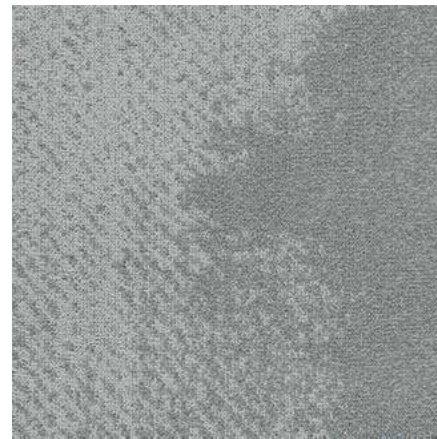


Shattered (*made-to-order*) in Lustre, ashlar tile installation

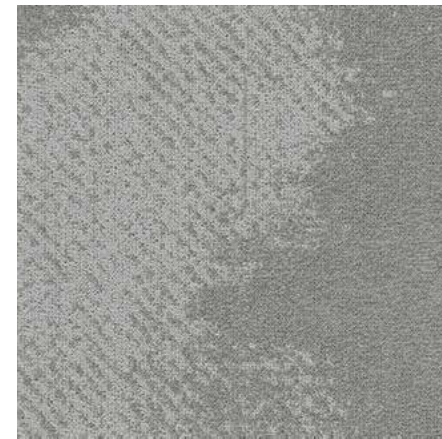
Colorline shown in **Washed**



WAS213-209 WHITEWASHED
(Distressed DIS213-209, Burned BUR213-209)



WAS209-152 BRUSHED
(Distressed DIS209-152, Burned BUR209-152)



WAS209-173 GLAZE
(Distressed DIS209-173, Burned BUR209-173)



WAS165 TIMEWORN
(Distressed DIS165, Burned BUR165)



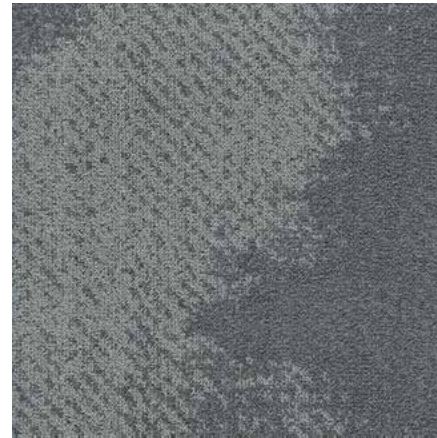
WAS121-176 GILT
(Distressed DIS121-176, Burned BUR121-176)



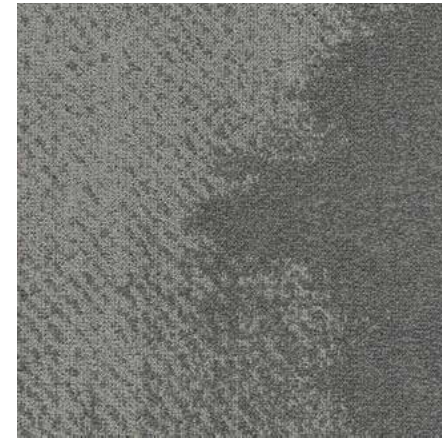
WAS204 LUSTRE
(Distressed DIS204, Burned BUR204)



WAS209-158 GLOSS
(Distressed DIS209-158, Burned BUR209-158)



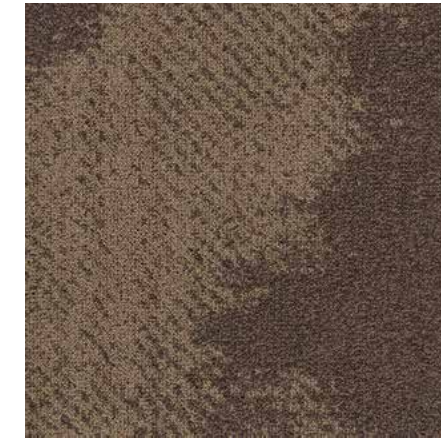
WAS152-106 RIPPLE
(Distressed DIS152-106, Burned BUR152-106)



WAS173-152 QUARTZ
(Distressed DIS173-152, Burned BUR173-152)



WAS173-174 ASH
(Distressed DIS173-174, Burned BUR173-174)



WAS176 VENEER
(Distressed DIS176, Burned BUR176)



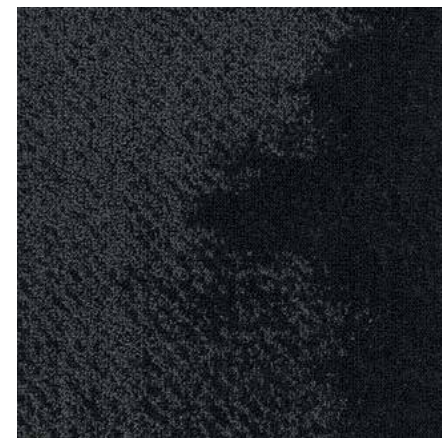
WAS21-14 CRESS
(Distressed DIS21-14, Burned BUR21-14)



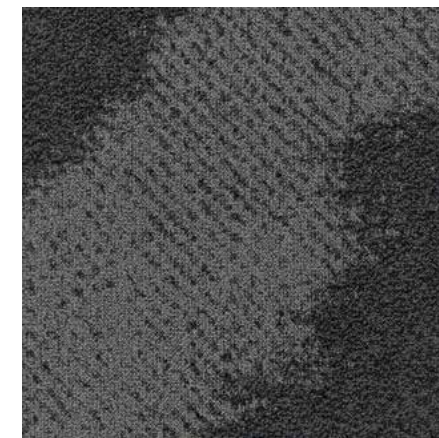
WAS106 EDDY
(Distressed DIS106, Burned BUR106)



WAS5-154 LEAD
(Distressed DIS5-154, Burned BUR5-154)



WAS154-133 TAR
(Distressed DIS154-133, Burned BUR154-133)



WAS119-174 CHARRED
(Distressed DIS119-174, Burned BUR119-174)



WAS178 SCORCHED
(Distressed DIS178, Burned BUR178)



WAS14-87 FRESH
(Distressed DIS14-87, Burned BUR14-87)

ADVANTAGES OF MILLIKEN CARPET TILE



Cushion Backing

Comfort Plus® & Underscore™ are Milliken's latest generation cushion backing systems and are standard on Milliken modular carpet products. In addition to providing superior underfoot comfort and significantly improving the carpet's wear performance, these cushion backings also offer ergonomic, acoustic, and environmental benefits.

Milliken cushion backing protects the carpet face from wear and can extend the carpet's life by up to 40%. Acting like an insulating shock absorber, Milliken cushion backings protect against wear, improve appearance retention and enhance comfort and safety. Cushion backing also helps Milliken carpets earn test ratings of Severe in the TARR system.

Milliken cushion-backed carpet tiles are unmatched in moisture management. They stop liquids at the surface and wick moisture away from the sub-floor thereby reducing conditions for mold and mildew growth. By allowing high levels of moisture to be transported through the tile, Milliken modular tiles can handle water vapor emissions up to 85% relative humidity. This unique feature eliminates one less worry about carpet in a high-humidity environment.

Cushion Improves Acoustics

Much emphasis is placed on the need to reduce unwanted noise in corporate and public spaces. Reducing noise levels can improve comfort, well-being, the ability to concentrate and yield higher performance and productivity. Milliken cushion-backed tiles achieve an improvement in sound absorption performance by absorbing sounds across a wide range of frequencies including those most associated with human speech. Milliken's cushioned carpet tiles absorb up to 50% more noise than hard-backed carpets and up to 12X more than hard surface and rubber flooring. Better yet, the new LEED v4 rewards designers for providing spaces that facilitate better communications by offering up to 2 LEED points. Clearly, acoustics matter.



TractionBack®

TractionBack® is a remarkable bio-based, high-friction coating that keeps our PVC-free carpet tile securely in-place without additional adhesives, floor sealers or primers. Applied during the manufacturing process, carpet tiles with TractionBack® require no manipulation, additional taping, or gluing steps in the field. Ready to install out-of-the-box makes installation, moving, or replacing Milliken carpet easier on you and the environment.

- Reduces or eliminates the need to prime or seal the floor
- Reduces or eliminates adhesive cost and saves on installation labor
- Eliminates the tools and labor to add other attachment mechanisms to the carpet tile
- Reduces or eliminates time spent spreading wet adhesives and waiting to dry
- Eliminates unnecessary waste like 'peel and stick' film covers
- Reduces or eliminates VOC off-gassing typically associated with floor sealants and adhesives
- allowing faster carpet installation and space habitation
- Stays in place even under high water vapor emissions
- Allows high levels of moisture to be transported through the tile
- Reduces or eliminates damage to raised access floors and high-quality sub-floors, leaving little or no residue
- Tiles can be lifted and re-placed multiple times without losing traction effect



Sustainable

At Milliken, sustainability is core to our culture. We believe a healthy enterprise and healthy earth are vitally linked. We care about and respect each other, our customers, and the world we share. While we hold ourselves accountable to the highest ethical standards, we derive our greatest satisfaction from creating innovations that help solve the worlds' problems at a human level—adding value to people's lives, improving health and safety, and making this world sustainable.

Milliken has also demonstrated a commitment to transparency by disclosing the components of our commercial carpet tile products through Declare®, a voluntary labeling program and database operated by the International Living Future Institute™, and complies with the Red List Imperative of the Living Building Challenge™.

Examples of Our Commitment:

- Zero waste to the landfill from our Milliken US carpet manufacturing facilities since 1992.
- 46% of the energy used in the manufacture of our carpet is renewable through company owned hydroelectric facilities and local landfill methane gas harvesting.
- Milliken Carpet tile products have Environmental Product Declarations (EPD's) that are third party certified by Underwriters Laboratory (UL).
- All Milliken Carpet products are free of the 15 Red List chemicals defined in the Living Building Challenge.
- All global Milliken products are third-party certified carbon neutral by the Leonardo Academy. Carbon dioxide created in the manufacturing of all Milliken products globally is offset through company owned sustainably managed forests and green energy producing facilities.
- Product Life Cycle Assessments (LCA) are used for New Product Development. Milliken has used the Design for Environment (DfE) process for our commercial carpet products since 2002.
- Our polyurethane backed cushion increases the life of carpet more than 40%.
- All Milliken Carpet products are 3rd party certified NSF-140 Gold or Platinum.
- All U.S. plants are certified as OSHA VPP STAR Sites.
- All carpet manufacturing sites are ISO-14001 Certified—the highest global standard for environmental responsibility.
- First US carpet manufacturer to obtain carpet manufacturing certification for the ISO 9000 Series Standard for quality.



StainSmart®

StainSmart® is a proprietary treatment applied to Milliken modular carpets to provide Stain Repel, Stain Resist and Soil Release characteristics. This treatment provides state-of-the-art protection against penetrating stains and soil. It's a dual action technology that enables liquid and oil-based spills to bead up and be easily removed from the carpet. The treatment becomes an inherent part of the carpet so it's durable over years of use, even in high traffic.

Stain Repel: StainSmart allows many liquid spills to be blotted and removed easily before they can penetrate beyond the carpet surface.

Stain Resist: This chemistry blocks the dye sites of the nylon fiber, lessening the ability of a stain to bond with the fiber.

Soil Release: Prevents soil from adhering to or imbedding in the fiber surface and enhances the efficiency of soil removal when proper cleaning techniques are followed.

Milliken warrants that carpet treated with StainSmart will resist soiling and staining during the lifetime* of the carpet. Proper maintenance is vital to the long-term effectiveness of the StainSmart treatment. Soaps used in wet-cleaning processes, especially spin bonnet, can cause rapid resoiling and effectively negate the protection built into the product. Milliken recommends the MilliCare® Textile and Carpet Care Service Network.

*Lifetime is defined as the period of time that the original purchaser of the carpet chooses to keep the carpet on the floor at the original installation site.

SURFACE STUDY

Burned / Distressed / Washed

Images in this brochure are approximate for color and pattern scale. Please use actual carpet samples to make your final selections.

Have you seen our other collections? Visit us online today.



Color Field



LVT



Construction

Washed: Tufted, Textured Loop

Burned & Distressed:

Tufted, Textured Loop, Tip Shear

Tile Size

50 cm x 50 cm (19.7" x 19.7")

Yarn Type

ECONYL® Solution-Dyed Nylon Type 6

Stain Repel & Resist / Soil Release

StainSmart®

Tufted Face Weight

Burned: 15.2 oz/yd² (515 g/m²)

Distressed: 15.9 oz/yd² (539 g/m²)

Washed: 15.3 oz/yd² (519 g/m²)

Finished Pile Height

Burned: 0.138" (3.51 mm)

Distressed: 0.136" (3.45 mm)

Washed: 0.135" (3.43 mm)

Finished Pile Thickness

Burned: 0.092" (2.34 mm)

Distressed: 0.086" (2.18 mm)

Washed: 0.077" (1.96 mm)

Average Density

Burned: 5,400

Distressed: 5,735

Washed: 6,545

Standard Backing

PVC-Free Underscore™ ES Cushion

Underscore™ is available with TractionBack®

Texture Appearance Retention Rating (TARR)

Heavy

Recommended Installation Methods



ASHLAR



V. ASHLAR

TractionBack®

Simplify your modular installation with Milliken's patented TractionBack®, an innovative backing system that is faster, more cost efficient, and environmentally superior to wet adhesives and peel-and-stick carpet tile.



This cushion-back carpet tile product is covered by one or more patents, published applications and/or patents pending. Specifications are subject to normal manufacturing tolerances and may be changed without prior notice.

Growing greener for over 100 years.

This product has a UL® Environment 3rd party verified Environmental Product Declaration (EPD). A copy of the EPD is available online at millikencarpet.com/epd and productguide.ulenvironment.com.