



**OBEX™ TILE**  
ENTRANCE FLOORING

Milliken™



OBEX™ Entrance Flooring

# STYLE THAT PROTECTS



OBEX™ Bar CutX in Dark Grey, OBEX™ Tile Cut/Thread in Grey TDC27-173 and Rejuvenate Dune REJ217.

Achieve high performing entry systems and create safer, cleaner environments for active surroundings. OBEX™ is a complete system of Forms and Materials that delivers any number of desired solutions, designed to stop dirt, moisture and other contaminants at the door, preventing them from spreading throughout your building.

OBEX™ consists of three primary Forms: Bar, Grid, and Tile. There are currently five Material options available. These options allow you to create multiple solutions for any application or facility.

## WHY OBEX™ TILE

The proof is in the performance. Select the right materials that match your areas and provide protection for your interiors. All OBEX™ Tiles feature our highly coveted WellBAC® cushion backing, providing a substantial layer of support and protection.

### ZONE 2

CutX is an aggressive textile created for the vestibule application. For areas with frequent heavy traffic, you can rely on the strong fibers in the CutX line to keep unwanted elements out. Its combination of scraping and moisture absorption is built to withstand heavy traffic.

### ZONE 3

Our Cut or Loop Materials provide the look of an interior carpet with superior performance of an entryway tile.



CutX/Footpath in Russet FOX143-178 and Cut/Footpath in Russet FOC143-178.



Cut/Stipple in Navy STC52 and CutX/Stipple in Navy STX52.

## DESIGN

Protect the health of your spaces without compromising aesthetics. A variety of design and color options provide creative freedom when choosing the Tile Form that best suits your needs. Whether you are looking for a beautiful design or want to showcase your brand, OBEX™ Tile can do both. OBEX™ Identity Tiles use the PrintWorks™ technology to create branding or messaging options that seamlessly integrate into surrounding tile.



## COST-EFFICIENT

Keep project costs low as you effortlessly elevate entryway style. OBEX™ Tile is simple to install, easy to clean, straightforward to replace, and less expensive than competitors. Flexible installation options include recessed, wall to wall, or surface mounted.



Cut/Stipple in Navy STC52.



Cut / Thread in Dark Grey TDC118-119



## KEYS TO PERFORMANCE

Performance is determined by choosing the right product and using enough of it to be impactful. The goal should be a target of 20 to 39 ft., since a Zone approach helps you achieve the necessary linear distance to stop dirt and moisture. The strength of the materials also matters, so all OBEX™ Materials are a combination of nylon and monofilament. Nylon effectively absorbs moisture and monofilament creates a thorough scraping action. The open cut pile construction creates room to capture dirt and moisture and allows for easy cleaning.



CutX/Fizz in Dark Grey FZX118-119 and Cut/Fizz in Dark Grey FZC118-119.



CutX/Grain in Dark Grey GRX154-119.

## CUT



The OBEX™ Cut profile is a balanced, easy to clean cut-pile construction combining moisture absorbing nylon and dirt scraping monofilament fibers that dramatically reduce contaminants entering the space.

Embrace tailored designs that protect against dirt and trap moisture. Seven tasteful designs in five color groups offer design flexibility, and our cushion backing provides durability and comfort for high traffic areas. Cut is a well-rounded option for Zone 3 interior spaces that demand performance without sacrificing style.

## CUTX



OBEX™ CutX is a more aggressive material of the Cut version. It is a cut-pile construction that contains more monofilament fibers for superior removal of moisture, damaging particles and pollutants. For areas that stop debris in its tracks, OBEX™ CutX is a highly desirable solution. Designed with scraper/moisture-repellent fibers, this solution is ideal for high traffic areas.

Cut and CutX share the same seven designs, five colorways, and cushion backing to allow for seamless entry pathways. CutX is a perfect option for Zone 2 vestibules and enclosed entry spaces where design comes second only to performance.



Loop/Stack in Grey SKL153-133.

## LOOP



OBEX™ Loop is a resilient, solution-dyed textile that combines high performance nylon and monofilament with loop-pile construction. This option offers additional underfoot comfort while maintaining moisture and debris removal capability.

Loop is available in two bold designs and a range of four colors. This product has the aesthetics of plush carpet while also standing up to moisture. Loop is a design and comfort centered performance product that complements the entryway system in interior Zone 3 spaces.



Cut/Thread in Russet TDC143-178.

A collection of various carpet samples in shades of dark grey, some with subtle textures and others with thin vertical lines in red or blue.

## DARK GREY

Emanate an aura of sleek sophistication with the Dark Grey colorway. Varying complementary shades add visual depth.

A collection of various carpet samples in shades of grey, some with subtle textures and others with thin vertical lines in red or blue.

## GREY

The expertly blended colors used in the grey color group call to mind nature's colors in late autumn. Dark Browns tastefully offset inclusions of grey.

# TRANSFORM AN ENTRYWAY FROM DULL TO DESIGNED.

A collection of various carpet samples in shades of navy blue, some with subtle textures and others with thin vertical lines in red or blue.

## NAVY

Quietly invigorate floorscapes with Navy's rich coloration. Shades of blue offer a sense of calm and clarity.

A collection of various carpet samples in shades of russet, some with subtle textures and others with thin vertical lines in red or blue.

## RUSSET

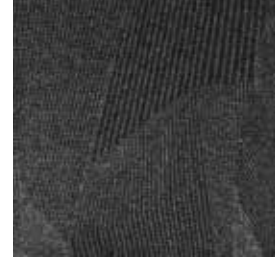
Infuse interiors with an element of warmth. Russet features soothing brown hues with subtle gold overtones.

A collection of various carpet samples in shades of taupe, some with subtle textures and others with thin vertical lines in red or blue.

## TAUPE

Ranging from dark browns to glossy caramel. Taupe is a perfect example of expertly layered colors. Hints of grey add a nicely contrasting element.

## CUT / CONTOUR



**DARK GREY**  
CNC119



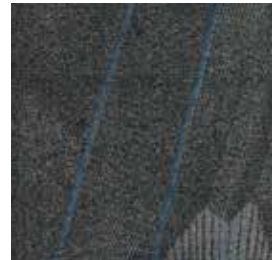
**GREY**  
CNC27



**RUSSET**  
CNC178



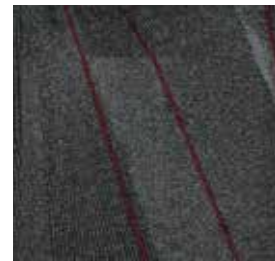
**DARK GREY W/NAVY**  
CNC123-119



**GREY W/NAVY**  
CNC123-27



**RUSSET W/NAVY**  
CNC123-178



**DARK GREY W/RED**  
CNC60-119



**GREY W/RED**  
CNC60-27



**RUSSET W/RED**  
CNC60-178

## CUTX / CONTOUR



**DARK GREY**  
CNX119



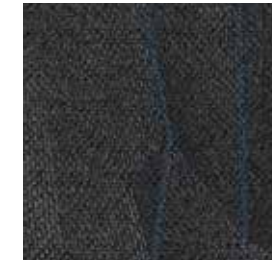
**GREY**  
CNX27



**RUSSET**  
CNX178



**DARK GREY W/NAVY**  
CNX123-119



**GREY W/NAVY**  
CNX123-27



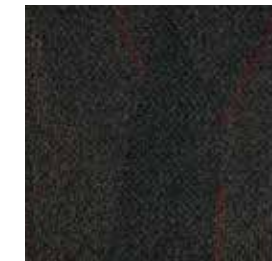
**RUSSET W/NAVY**  
CNX123-178



**DARK GREY W/RED**  
CNX60-119



**GREY W/RED**  
CNX60-27



**RUSSET W/RED**  
CNX60-178



CutX/Contour in Dark Gray CNX119 and Cut/Contour in Dark Grey CNC119.



## CUT / FIBER



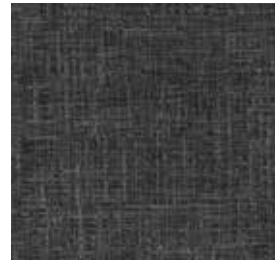
**DARK GREY**  
FRC118-119



**GREY**  
FRC235-27



**RUSSET**  
FRC143-178



**TAUPE**  
FRC174-133

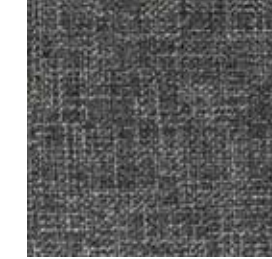


**NAVY**  
FRC52

## CUTX / FIBER



**DARK GREY**  
FRX118-119



**GREY**  
FRX235-27



**RUSSET**  
FRX143-178



**TAUPE**  
FRX174-133



**NAVY**  
FRX52

## CUT / FIZZ



**DARK GREY**  
FZC118-119



**GREY**  
FZC27-173



**RUSSET**  
FZC143-178

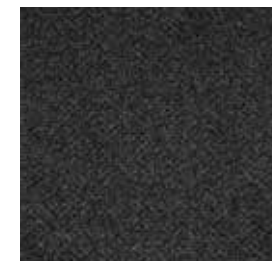


**TAUPE**  
FZC174-133

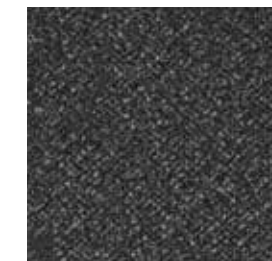


**NAVY**  
FZC52

## CUTX / FIZZ



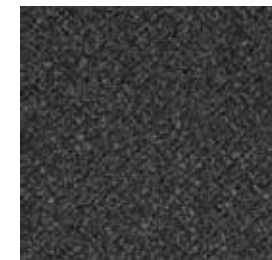
**DARK GREY**  
FZX118-119



**GREY**  
FZX5-27



**RUSSET**  
FZX143-178



**TAUPE**  
FZX174-133



**NAVY**  
FZX52

## CUT / FOOTPATH



**DARK GREY**  
FOC119



**GREY**  
FOC235-27



**RUSSET**  
FOC143-178



**TAUPE**  
FOC174-133



**NAVY**  
FOC52

## CUTX / FOOTPATH



**DARK GREY**  
FOX119



**GREY**  
FOX235-27



**RUSSET**  
FOX143-178



**TAUPE**  
FOX174-133



**NAVY**  
FOX52

## CUT / GRAIN



**DARK GREY**  
GRC154-119



**GREY**  
GRC235-27



**RUSSET**  
GRC143-178



**TAUPE**  
GRC174-133



**NAVY**  
GRC52

## CUTX / GRAIN



**DARK GREY**  
GRX154-119



**GREY**  
GRX235-27



**RUSSET**  
GRX143-178



**TAUPE**  
GRX174-133

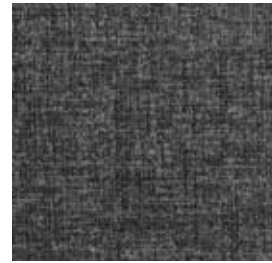


**NAVY**  
GRX52

## CUT / STIPPLE



**DARK GREY**  
STC119



**GREY**  
STC235-27



**RUSSET**  
STC143-178



**TAUPE**  
STC174-133



**NAVY**  
STC52

## CUTX / STIPPLE



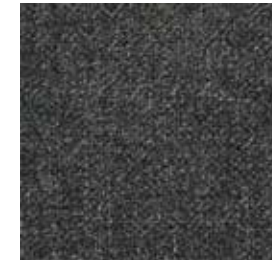
**DARK GREY**  
STX119



**GREY**  
STX235-27



**RUSSET**  
STX143-178



**TAUPE**  
STX174-133



**NAVY**  
STX52

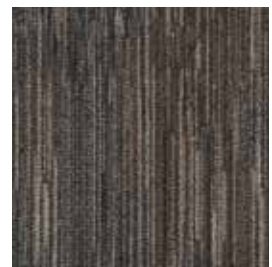
## CUT / THREAD



**DARK GREY**  
TDC118-119



**GREY**  
TDC27-173



**RUSSET**  
TDC143-178

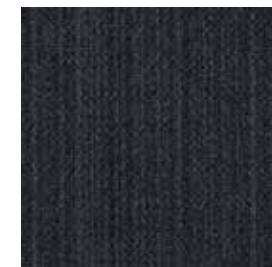


**TAUPE**  
TDC133



**NAVY**  
TDC52

## CUTX / THREAD



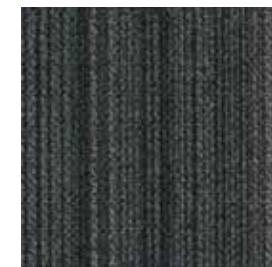
**DARK GREY**  
TDX118-119



**GREY**  
TDX5-27



**RUSSET**  
TDX143-178



**TAUPE**  
TDX133

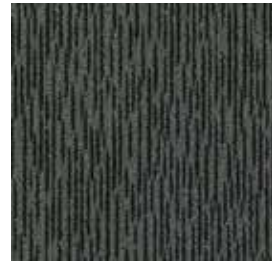


**NAVY**  
TDX52

## LOOP / BARK



**DARK GREY**  
BKL118-133



**GREY**  
BKL153-133



**DARK BLUE**  
BKL19-133



**BROWN**  
BKL26-133

## LOOP / STACK



**DARK GREY**  
SKL118-133



**GREY**  
SKL153-133



**DARK BLUE**  
SKL19-133



**BROWN**  
SKL26-133





# Milliken™ FOR HUMAN**KIND.**

## RED LIST FREE

Healthy materials are the foundation for effective circularity, reducing community pollution and cleaner living for all.

- The Living Building Challenge Red List contains the “worst in class” materials, chemicals and elements known to pose serious risks to human health and the greater ecosystem.
- Red List Free certification is the absence of Red List chemicals in building and home furnishings.
- Our products have been completely vetted and verified to contain no Red List Chemicals at levels at or above 100 ppm or 0.01 percent.
- Affords superior recycling potential of clean-based products.

Achieving LBC Red List Free is a commitment to significantly cut down on the output and use of harmful chemicals. It reflects our company’s prioritization on human health and ensuring a brighter future for generations to come.

## M/PACT™ Carbon Neutral Product

Climate change is one of the greatest threats facing humanity. That’s why our flooring products are carbon neutral everywhere in the world. Let’s work together for a better tomorrow.



**M/PACT™**  
CARBON NEUTRAL PROGRAM

**Declare.**



Scan to learn more about our commitment to sustainability.



## OBEX™ TILE

### CUT

**Construction**

Tufted, Cut Pile

**Yarn Type**

Milliken-Certified  
WearOn® Nylon and  
Monofilament

**Dye Method**

PrintWorks™  
Precision Dye

**Nominal Total Thickness**

0.50" (12.7 mm)

**Recommended  
Maintenance**

Daily vacuum, deep clean  
via hot water extraction

### CUTX

**Construction**

Tufted, Cut Pile

**Yarn Type**

Milliken-Certified  
WearOn® Nylon and  
Monofilament

**Dye Method**

PrintWorks™  
Precision Dyeing

**Nominal Total Thickness**

0.50" (12.7 mm)

**Recommended  
Maintenance**

Daily vacuum, deep clean  
via hot water extraction

### LOOP

**Construction**

Tufted, Multi-Level Loop

**Yarn Type**

ECONYL® Solution-Dyed  
Nylon and Solution-Dyed  
Nylon Monofilament

**Dye Method**

Solution Dyed

**Nominal Total Thickness**

0.391" (9.9 mm)

**Recommended  
Maintenance**

Daily vacuum, deep clean  
via hot water extraction



Declare.



## M/PACT™ CARBON NEUTRAL PROGRAM

M/PACT carbon neutral products offset the raw materials and manufacturing carbon footprint\* by using 3rd party Verified Carbon Standard Credits that support renewable energy and carbon reduction technologies to help fight climate change. When you choose M/PACT products, you can be sure your choice is carbon neutral.

Images in this brochure and architect folder are approximate for color and pattern scale. Please use actual carpet samples to make your final selections.

**SHOWN ON THE COVER**

(Front Cover) Cut/Contour in Grey CNC27.

(Back Cover) CutX/Footpath in Russet FOX143-178  
and Cut/Footpath in Russet FOC143-178.

Milliken™

Customer Concierge 800.824.2246 | millikenfloors.com  
© 2023 Milliken & Company | Design © Milliken & Company

2710035904  
CP 1123

Scan to explore  
the collection.

