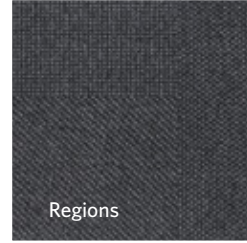
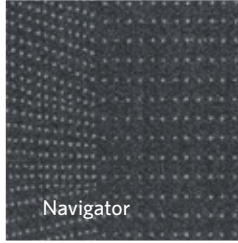
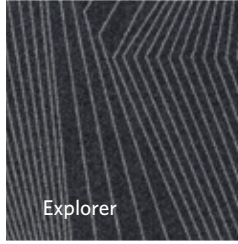


TOPOGRAPHY 2.0

Explorer | Relief
Navigator | Regions



Milliken[™]
Ontera[™]

SOUTH ZONE

LAB

play
pod

QUIET ISLAND ...

100▲

200▲

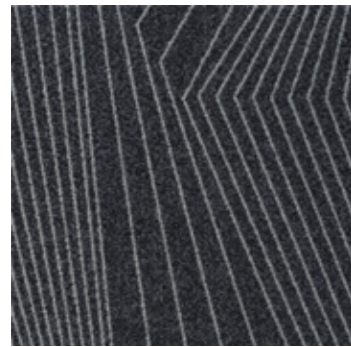
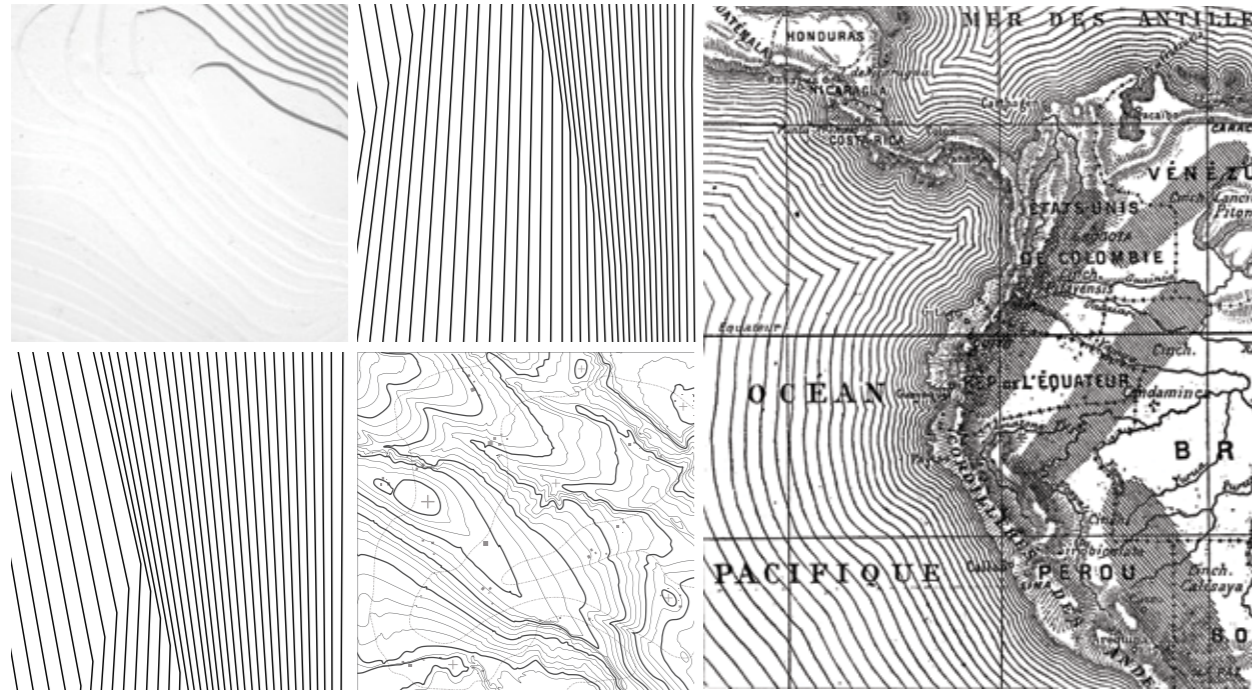
300▲

MAPPING TOOLS

Topography - Explorer

Explorer is the geometric abstraction of the organic contour lines within a topographical map.

It is a modern take on an ageless cartographic medium that is both familiar and innovative.



EXP144-119 BORDER
50cmx50cm



Explorer in Border and Relief in Custom | Monolithic Installation

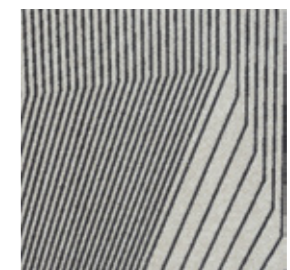




Explorer in Break-line and Custom | Monolithic Installation



Explorer in Break-line and Custom | Monolithic Installation



EXP119-219 BREAK-LINE



CUSTOM WAYFINDING

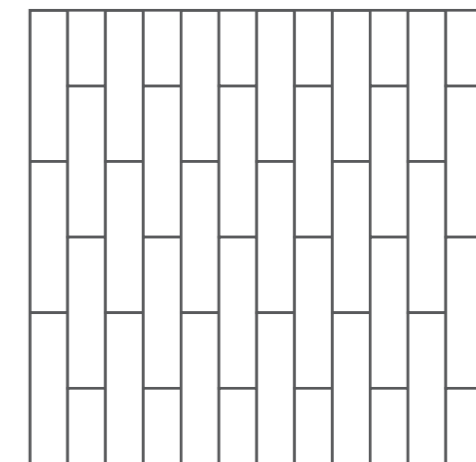




Explorer in Plans and Terrain | Ashlar (Vertical) Installation



Explorer in Plans and Terrain | Ashlar (Vertical) Installation



Ashlar (Vertical)



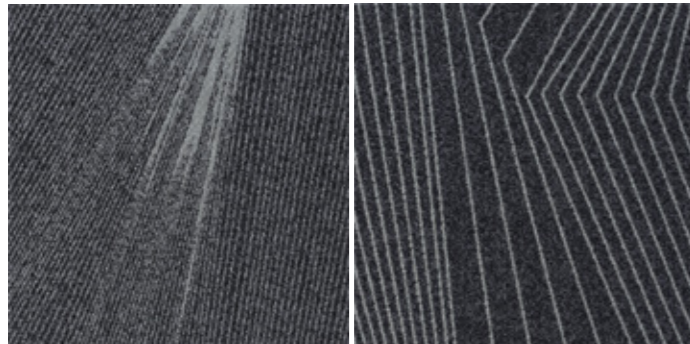
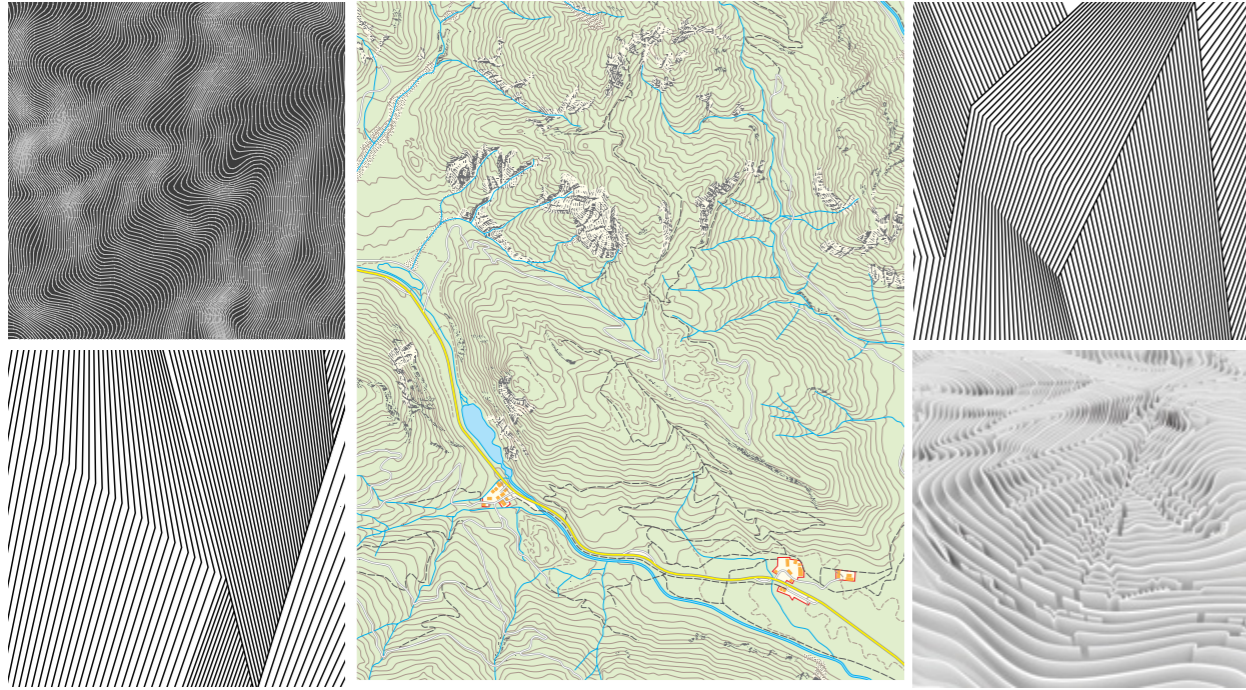
EXP133-94
PLANS
25cmx1m

EXP218-145
TERRAIN
25cmx1m

MAPPING TOOLS

Topography - Relief

Relief acts as both the antithesis and compliment to Explorer. Greater line density starts to create visual planes while emphasising the geometry and rhythm of Explorer.



REF144-119 BORDER

EXP144-119 BORDER



Explorer and Relief in Border | Monolithic Installation

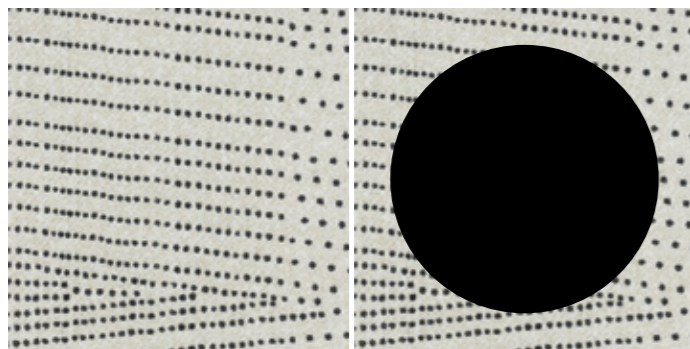
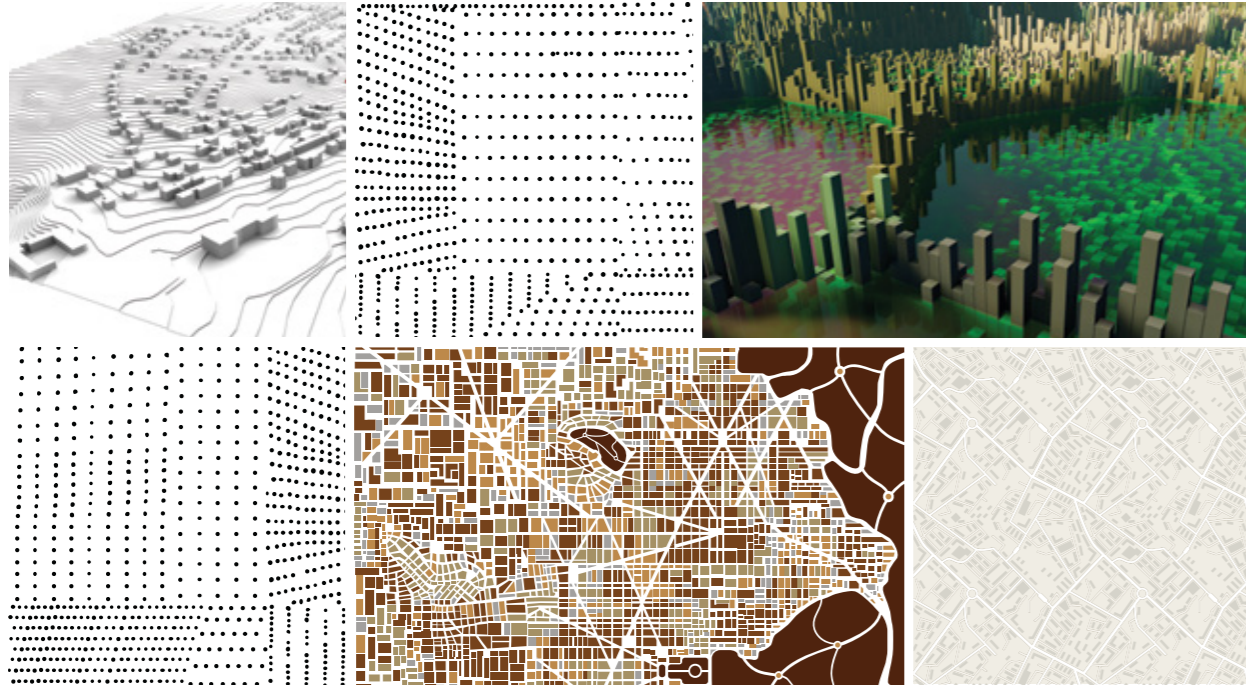


Relief in Border and Border with Azul | Monolithic Installation

MAPPING TOOLS

Topography - Navigator

Based on a 3-dimensional point field map, Navigator used a series of pixel points to create plane and perspective within a single tile. A combination of tiles create a dynamic terrain comprised of tilting and shifting visual planes.



NAV119-219 BREAK-LINE

CUSTOM AREA TAG



Navigator in Break-Line and Custom Monolithic Installation

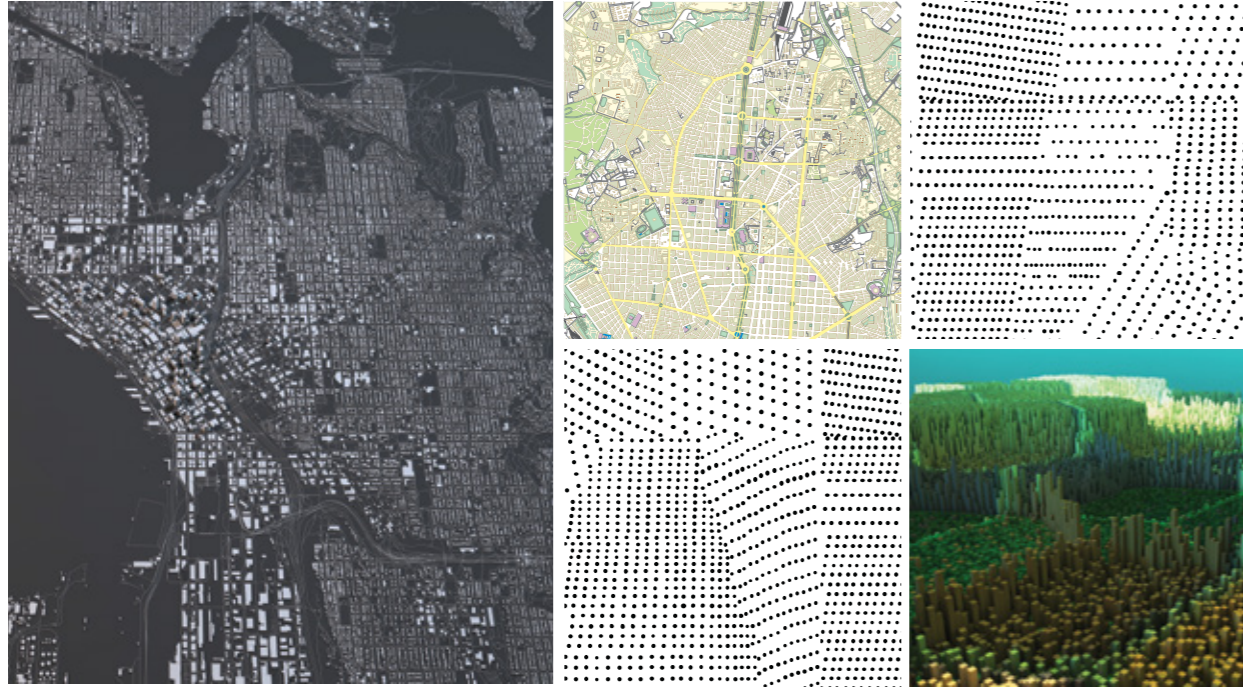


Navigator in Break-Line and Break-Line with Sun | Monolithic Installation

MAPPING TOOLS

Topography - Regions

Regions shifts the scale and density of Navigator. What once felt like a textural abstraction of a 3-dimensional plan, now takes on its own unique surface quality.



NAV133-94 PLANS

REG133-94 PLANS

I WOULD LOOK BETTER ON YOUR SHELF!



Navigator and Regions in Plans | Monolithic Installation



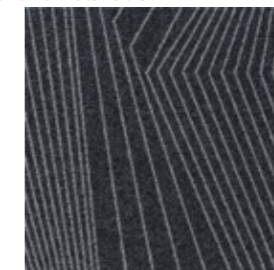
Regions in Break-Line and Break-Line with Sun | Monolithic Installation



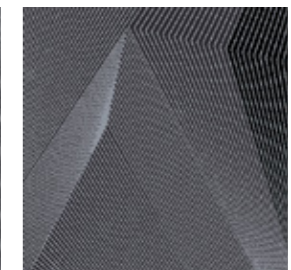
Explorer and Navigator in Border and Relief in Custom | Monolithic Installation



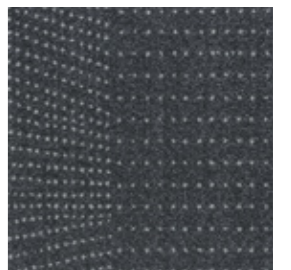
Explorer and Navigator in Border and Relief in Custom | Monolithic Installation



EXP144-119 BORDER



CUSTOM ZONES



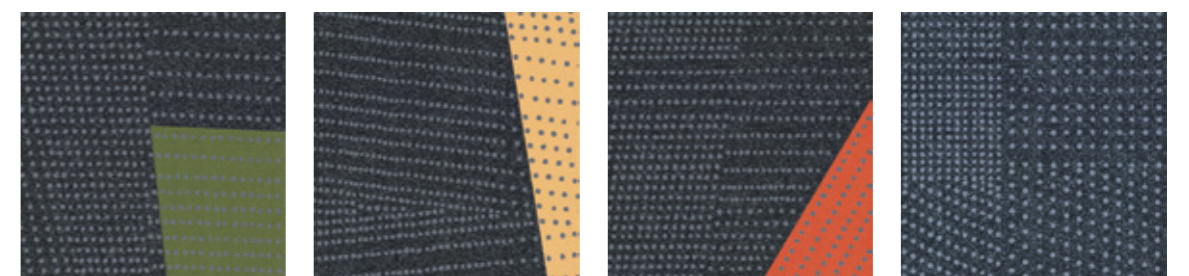
NAV144-119 BORDER



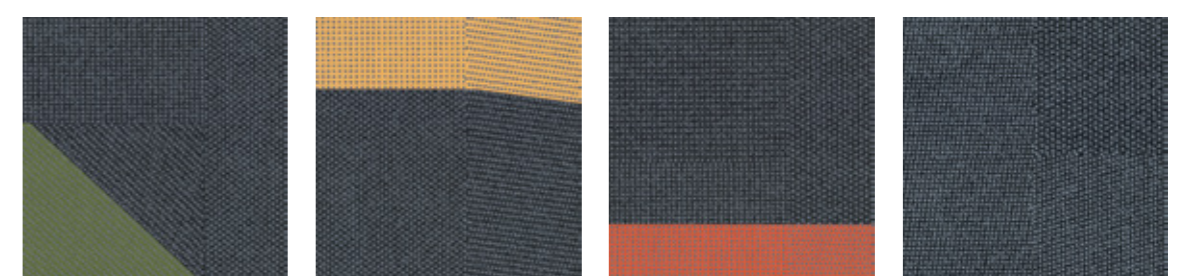
Navigator and Regions in Landform and Landform with Sun, Tangerine and Parrot | Monolithic Installation



Navigator and Regions in Landform and Landform with Sun, Tangerine and Parrot | Monolithic Installation

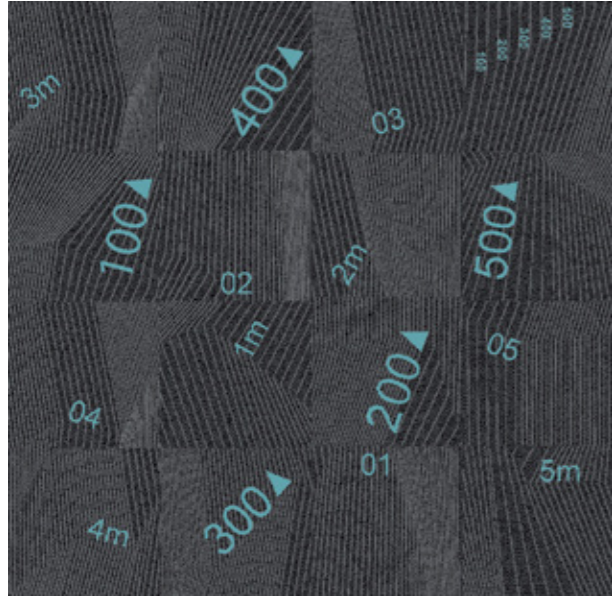


NAVZ202-153-118 LANDFORM WITH PARROT NAVZ231-153-118 LANDFORM WITH SUN NAVZ25-153-118 LANDFORM WITH TANGERINE NAV153-118 LANDFORM



REGZ202-153-118 LANDFORM WITH PARROT REGZ231-153-118 LANDFORM WITH SUN REGZ25-153-118 LANDFORM WITH TANGERINE REG153-118 LANDFORM

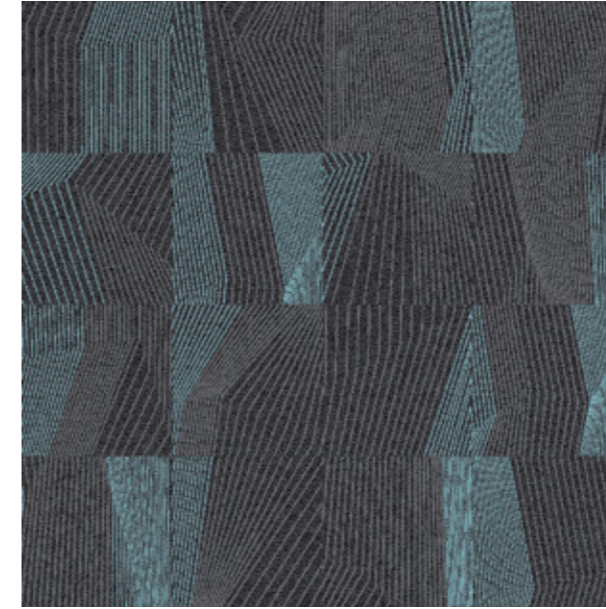
DRAWING TOOLS



Explorer - Navigate (Custom)



Explorer - Area Tag (Custom)



Explorer - Wayfinding



Explorer - Zones

Symbols placement options



Navigate: Number graphics (Custom)

Area Tag: Symbols (Custom)

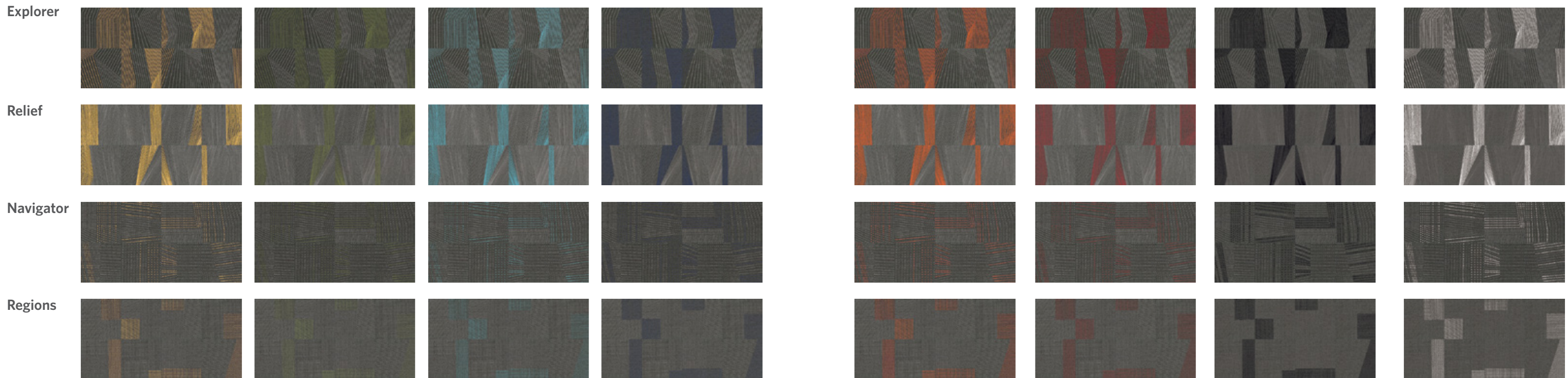
Wayfinding: Accent Lines

Zones: Accent Blocks

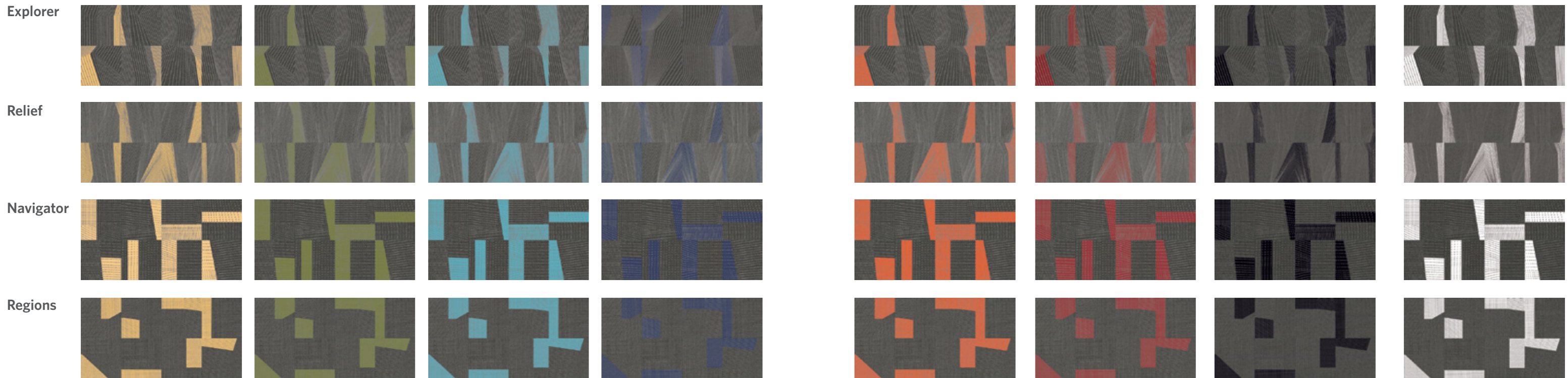
Symbols placement with Accent colour options



Wayfinding

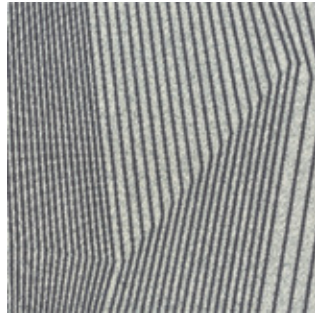


Zones

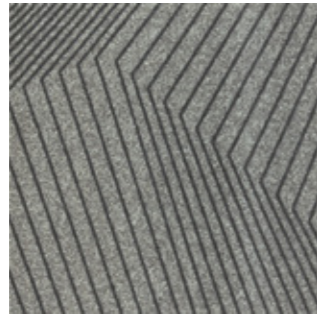


COLOURWAY

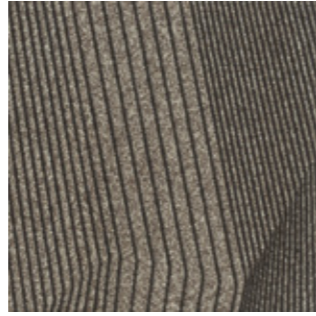
Explorer



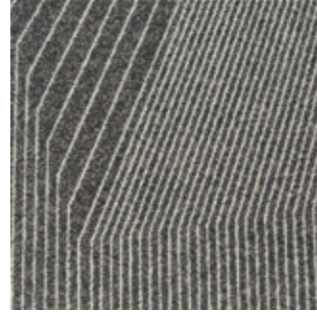
EXP154-218 PROJECTION



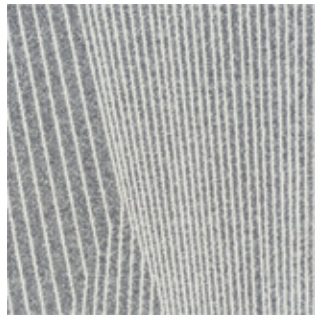
EXP119-6 MAPPING



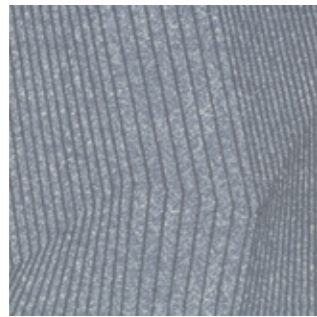
EXP133-94 PLANS



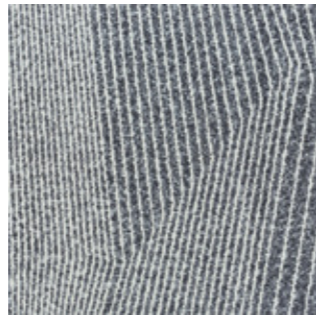
EXP218-145 TERRAIN



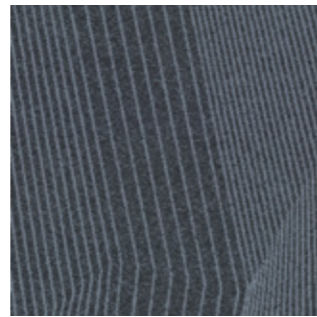
EXP219-108 ELEVATE



EXP13-153 GRID



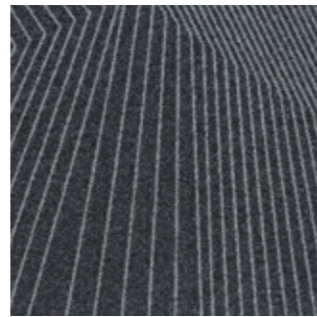
EXP219-13 SURFACES



EXP153-118 LANDFORM



EXP119-219 BREAK-LINE



EXP144-119 BORDER

Relief



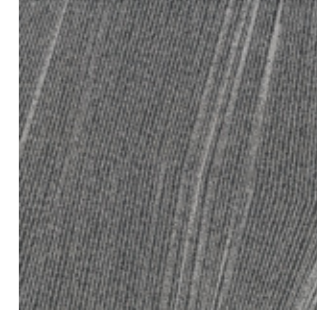
REF154-218 PROJECTION



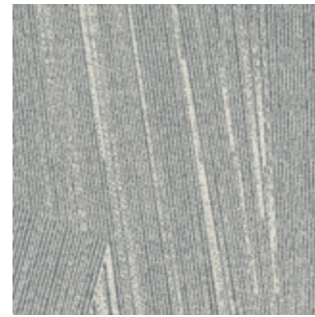
REF119-6 MAPPING



REF133-94 PLANS



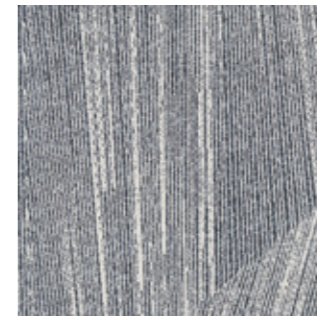
REF218-145 TERRAIN



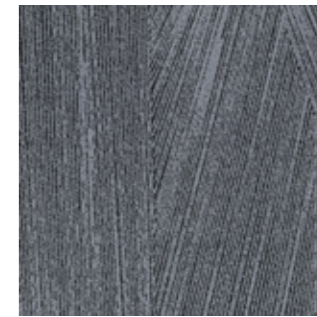
REF219-108 ELEVATE



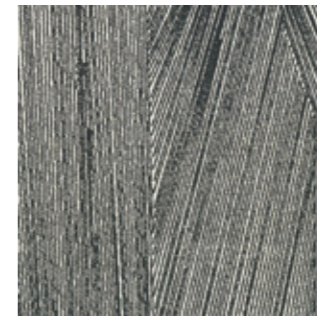
REF13-153 GRID



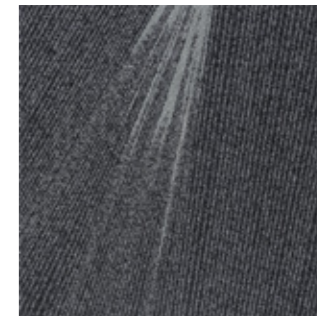
REF219-13 SURFACES



REF153-118 LANDFORM



REF119-219 BREAK-LINE

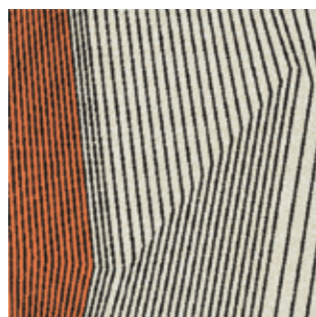


REF144-119 BORDER

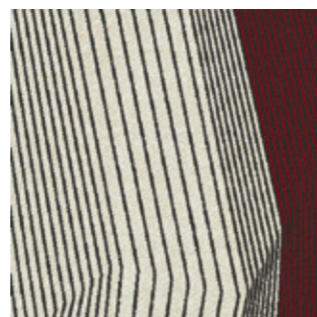
ACCENT EXAMPLES Zones



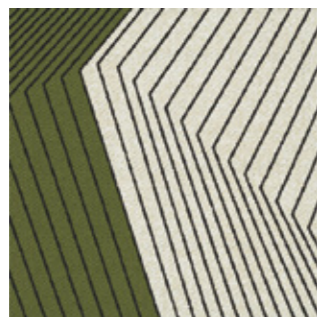
EXPZ231-119-219
BREAK-LINE WITH SUN



EXPZ25-119-219
BREAK-LINE WITH TANGERINE



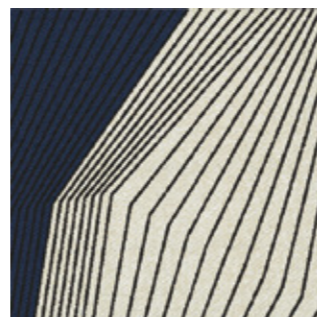
EXPZ109-119-219
BREAK-LINE WITH SCARLET



EXPZ202-119-219
BREAK-LINE WITH PARROT

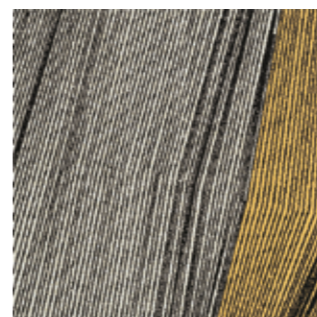


EXPZ140-119-219
BREAK-LINE WITH AZUL

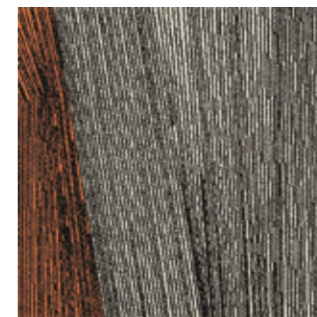


EXPZ19-119-219
BREAK-LINE WITH NAVY

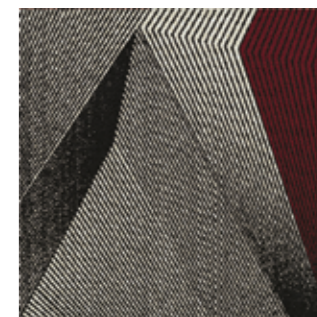
ACCENT EXAMPLES Zones



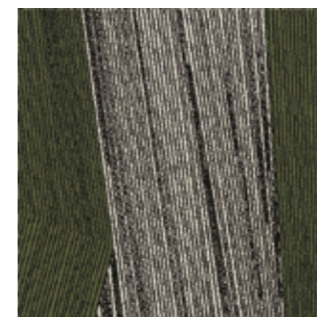
REFZ231-119-219
BREAK-LINE WITH SUN



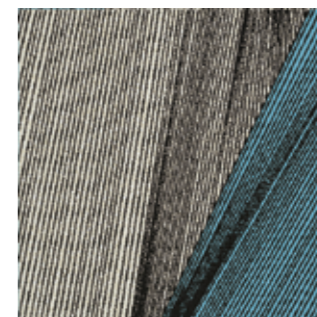
REFZ25-119-219
BREAK-LINE WITH TANGERINE



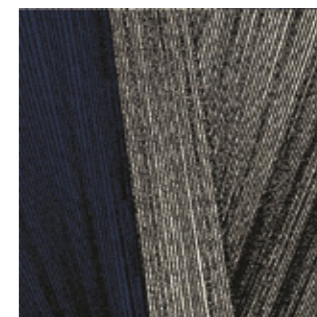
REFZ109-119-219
BREAK-LINE WITH SCARLET



REFZ202-119-219
BREAK-LINE WITH PARROT



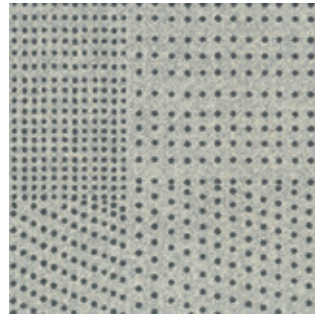
REFZ140-119-219
BREAK-LINE WITH AZUL



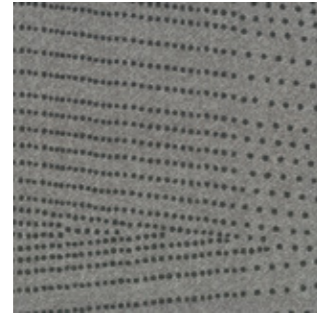
REFZ19-119-219
BREAK-LINE WITH NAVY

COLOURWAY

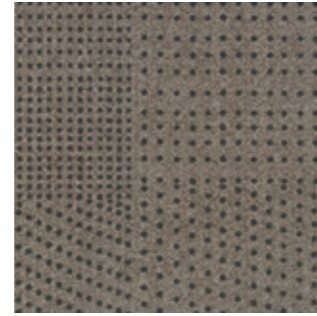
Navigator



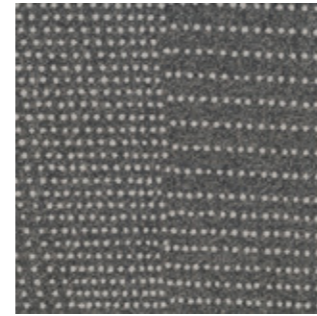
NAV154-218 PROJECTION



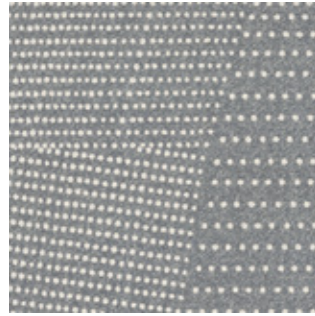
NAV119-6 MAPPING



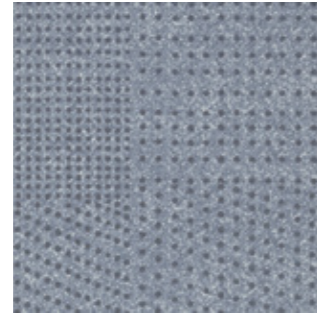
NAV133-94 PLANS



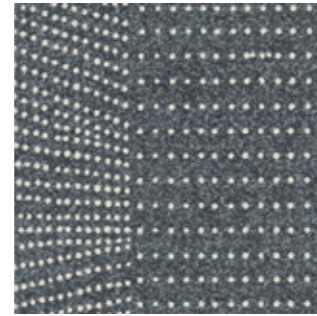
NAV218-145 TERRAIN



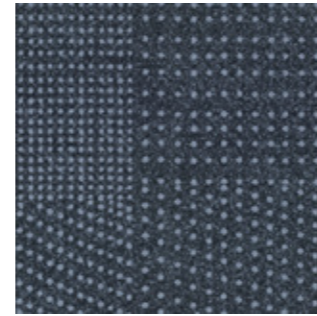
NAV219-108 ELEVATE



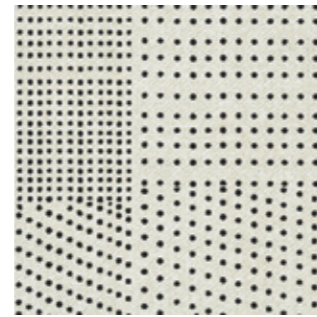
NAV13-153 GRID



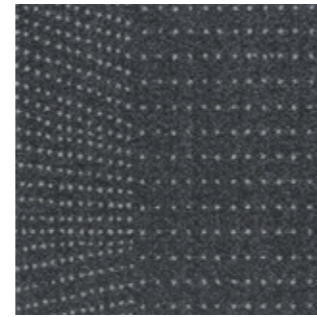
NAV219-13 SURFACES



NAV153-118 LANDFORM

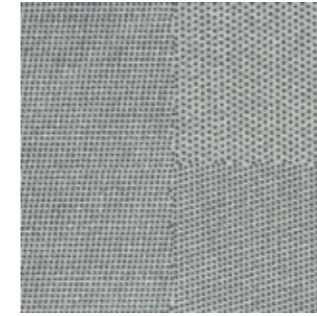


NAV119-219 BREAK-LINE

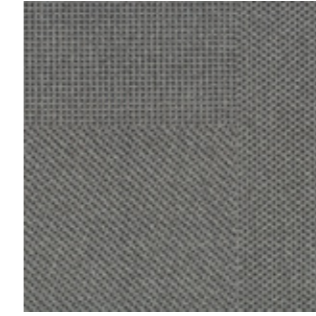


NAV144-119 BORDER

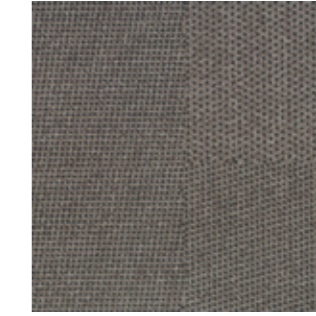
Regions



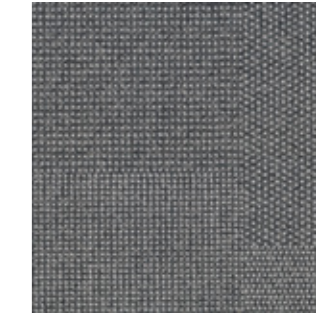
REG154-218 PROJECTION



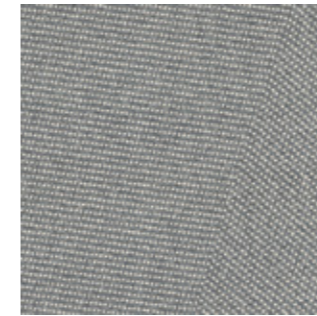
REG119-6 MAPPING



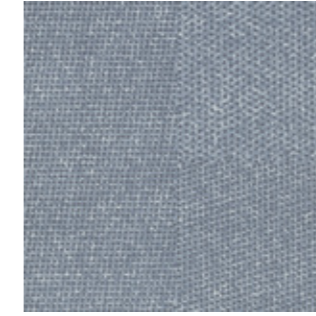
REG133-94 PLANS



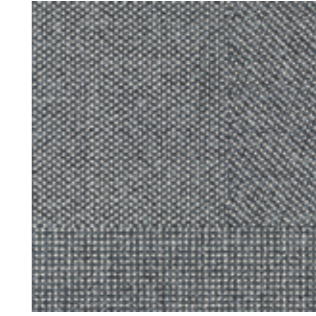
REG218-145 TERRAIN



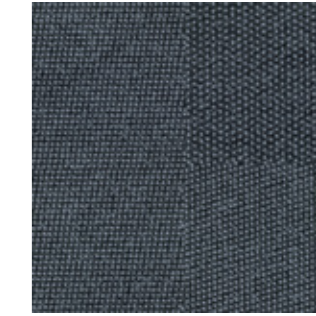
REG219-108 ELEVATE



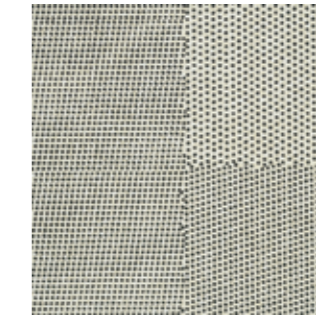
REG13-153 GRID



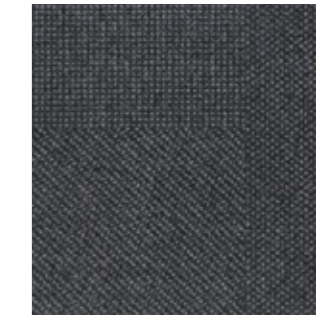
REG219-13 SURFACES



REG153-118 LANDFORM

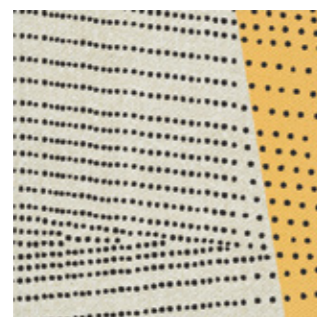


REG119-219 BREAK-LINE

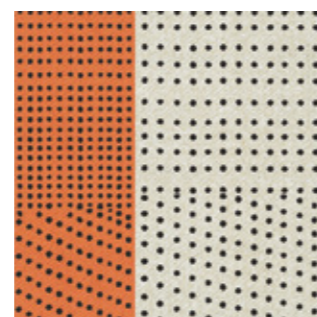


REG144-119 BORDER

ACCENT EXAMPLES Zones



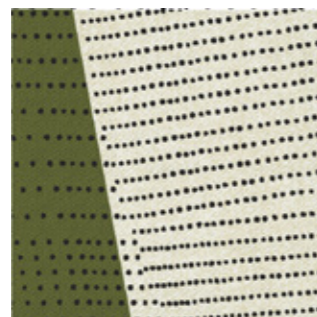
NAVZ231-119-219
BREAK-LINE WITH SUN



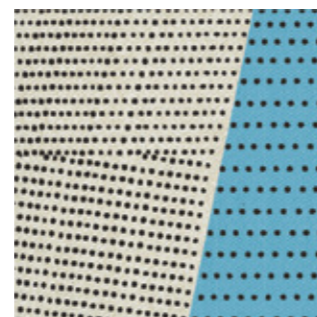
NAVZ25-119-219
BREAK-LINE WITH TANGERINE



NAVZ109-119-219
BREAK-LINE WITH SCARLET



NAVZ202-119-219
BREAK-LINE WITH PARROT

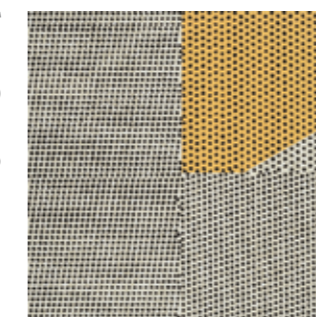


NAVZ140-119-219
BREAK-LINE WITH AZUL

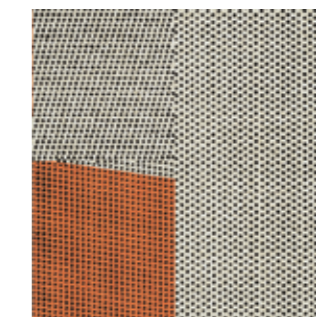


NAVZ19-119-219
BREAK-LINE WITH NAVY

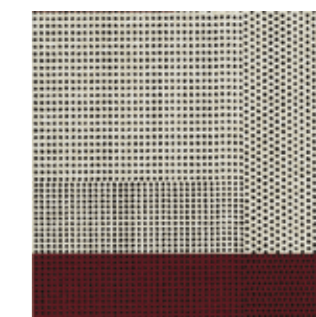
ACCENT EXAMPLES Zones



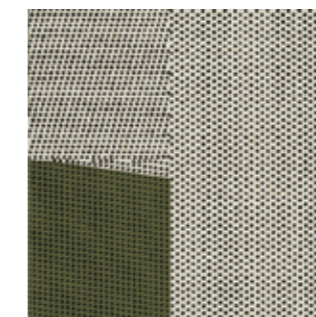
REGZ231-119-219
BREAK-LINE WITH SUN



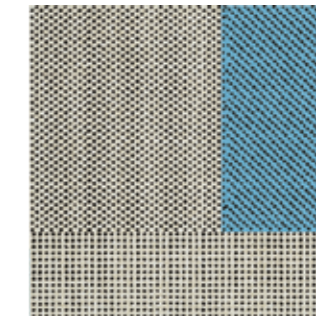
REGZ25-119-219
BREAK-LINE WITH TANGERINE



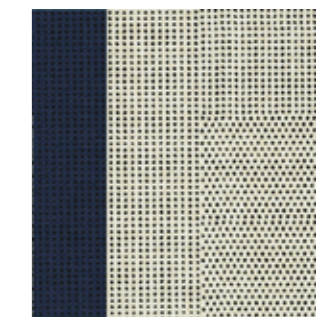
REGZ109-119-219
BREAK-LINE WITH SCARLET



REGZ202-119-219
BREAK-LINE WITH PARROT



REGZ140-119-219
BREAK-LINE WITH AZUL



REGZ19-119-219
BREAK-LINE WITH NAVY

TOPOGRAPHY 2.0

Explorer | Relief | Navigator | Regions

Construction

Tufted, Textured Loop

Tile Size

50cm x 50cm

Yarn Type

Milliken Certified Wear-On®
Nylon Type 6,6

Stain Repel | Stain Resist | Soil Release

StainSmart®

Antimicrobial

AlphaSan® AF Built-In Protection

Dye Method

Millitron® Dye Injection

Gauge

1/10

Stitches Per Inch

14.4

Tufts

144/in² (2,230/100cm²)

Standard Backing

WellBAC™ Comfort (PVC-Free)
(non-reactive cushion backing)

Recycled Content by Total Weight

26% Pre-Consumer

Nominal Total Thickness

0.29" (7.5 mm)

Nominal Total Weight

103 oz/yd² (3,500 g/m²)

Pile Thickness

2.4 mm (Nominal)

Flammability (Radiant Panel Test)

CRF = 6.8 kW/m², Smoke rate 287%. min

Lightfastness (AATCC 16E)

> 4.0 at 80 Hours

Static Electricity (AATCC-134) 20% R.H., 70° F

≤ 3.5 KV

Recommended Maintenance

Refer to the Milliken-Ontera Care
& Maintenance guide Millicare® Care
plan available in some regions.

Indoor Air Quality—CRI Green Label Plus™

0.5mg/m³ (GLP0793)

VOC

Pass (ISO 10580:2010)

Environmental

Declare - 3rd Party Verified RED LIST FREE

Acoustic Rating

NRC ≥ 0.25 (Exceeds standard acoustic
requirements of the Carpet Institute)
Ln, w ≤ 47dB (Well below the BCA limit of
62dB)

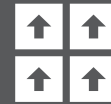
EXCLUSIVE: Site-Related Solutions (SRS)

Milliken-Ontera Cushion backed tile
+ Non-Reactive Standard adhesive means
install 60 days after a new concrete pour,
fully warranted no testing required.
Refer millikenontera.com.au

Warranties

15-year Wear Warranty
15-year Dimensional Stability Warranty
15-year Anti-Static Warranty
15-year Castor Chair Wear Warranty

Recommended Installation Method



Monolithic



Alliance
Founding
Member



Declare.



Australia:

Toll Free: 1800 668 372

New Zealand:

Toll Free: 0800 668 372

www.millikenontera.com.au
(Australia & New Zealand)

This WellBAC™ cushion-back carpet tile product is covered by one or more patents, published applications and/or patents pending. Specifications are subject to normal manufacturing tolerances and may be changed without prior notice. Copies of actual test results are available upon request.

© 2020 Milliken & Company | Design © Milliken & Company



Growing greener for over 100 years.

Visit milliken.com for more information

Printed images in this architect brochure are approximate for colour and pattern scale. Please see actual carpet samples to make your final selections.