

ARCTIC SURVEY

Expedition | Isotherm | Shackleton



Expedition



Isotherm



Shackleton



Milliken™
Ontera™





INSPIRED. INSPIRING.

Ice is ever changing. Layers form over centuries from the seasons' ebb and flow. Exploring this frigid environment requires the heart of an explorer and its constant yearning for discovery. The Arctic offers a place of solitude and a counterbalance to an idea of natural beauty.

The Arctic Survey collection offers a series of bold textures inspired by the movement, structures, and evolving forms of ice in the Arctic. Three patterns vary in movement and scale, formed by varying depths of an all loop, solution dyed construction. The result is a new and elegant visual landscape for the floor.





Expedition in Glacial | EXP52-126 | Ashlar (Vertical) Installation



Isotherm in Glacial | IST52-126 | Ashlar (Vertical) installation





(Alternating bands) Shackleton (SKH119-27) and Isotherm (IST119-27) in Black Ice | Ashlar (Vertical) installation



Expedition in Permafrost | EXP67-59 | Ashlar (Vertical) installation



Shackleton in Sedges | SHK45-28 | Ashlar (Vertical) installation

DESIGN Shown in Glacial



ISO THERM



EXPEDITION

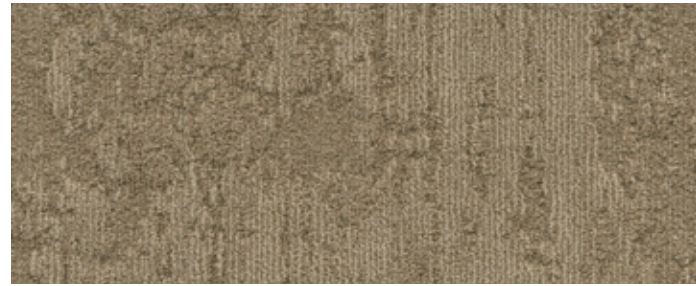


SHACKLETON

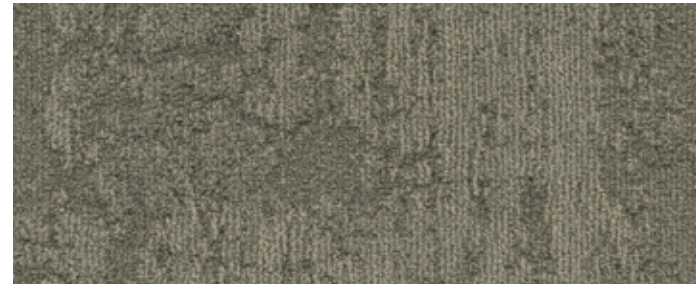


(left to right) Expedition, Shackleton, and Isotherm in Avalanche

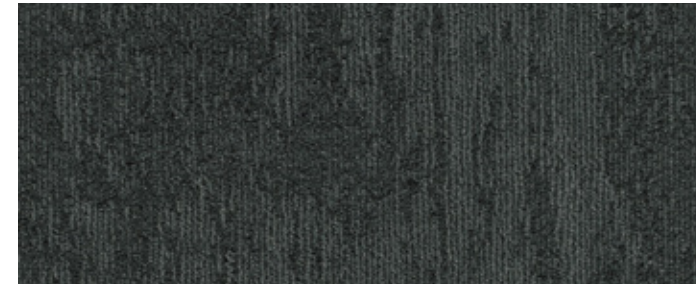
COLOURWAY Shown in Isotherm



IST15-121 MIGRATE (Expedition EXP15-121, Shackleton SHK15-121)



IST48-122 SLEET (Expedition EXP48-122, Shackleton SHK48-122)



IST174-119 SUB ZERO (Expedition EXP174-119, Shackleton SHK174-119)



IST119-27 BLACK ICE (Expedition EXP119-27, Shackleton SHK119-27)



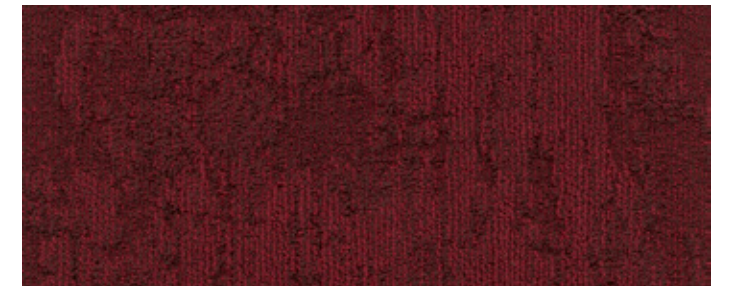
IST124-94 HIBERNATE (Expedition EXP124-94, Shackleton SHK124-94)



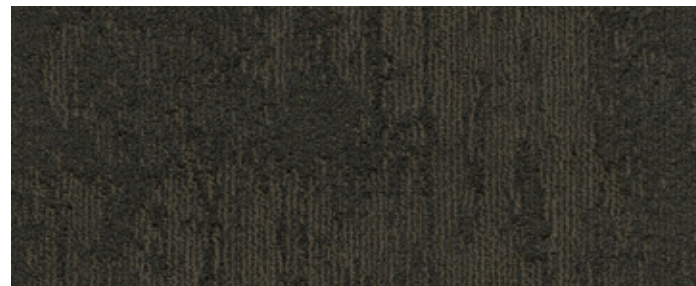
IST122-120 THAW (Expedition EXP122-120, Shackleton SHK122-120)



IST111-134 MIDNIGHT SUN (Expedition EXP111-134, Shackleton SHK111-134)



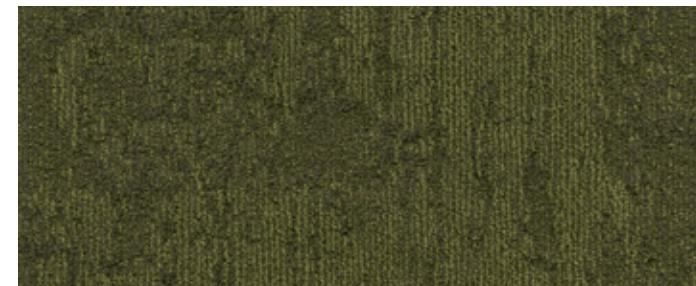
IST109-60 FIRESIDE (Expedition EXP109-60, Shackleton SHK109-60)



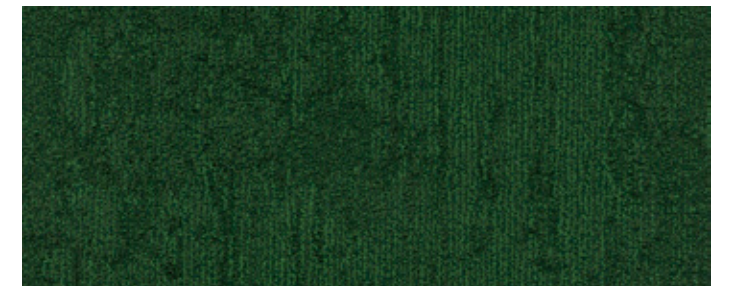
IST93-178 TUNDRA (Expedition EXP93-178, Shackleton SHK93-178)



IST67-59 PERMAFROST (Expedition EXP67-59, Shackleton SHK67-59)



IST45-28 SEDGES (Expedition EXP45-28, Shackleton SHK45-28)



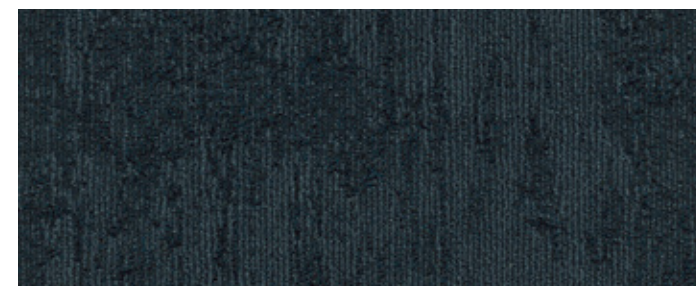
IST203-230 EVERGREEN (Expedition EXP203-230, Shackleton SHK203-230)



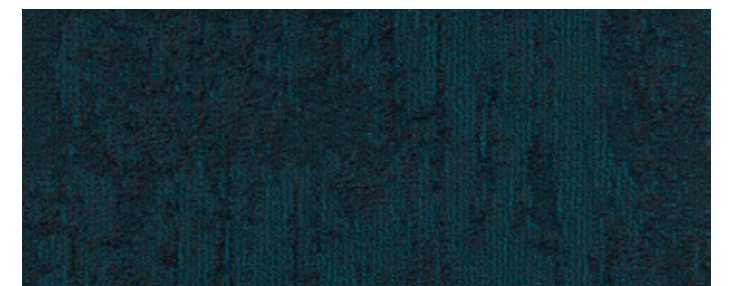
IST204-171 FROSTBITE (Expedition EXP204-171, Shackleton SHK204-171)



IST108-122 ICE CAP (Expedition EXP108-122, Shackleton SHK108-122)



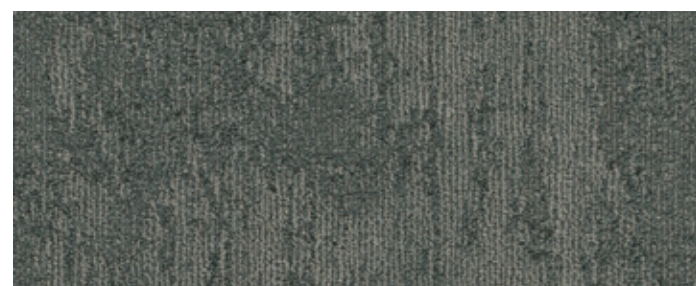
IST52-107 POLAR NIGHT (Expedition EXP52-107, Shackleton SHK52-107)



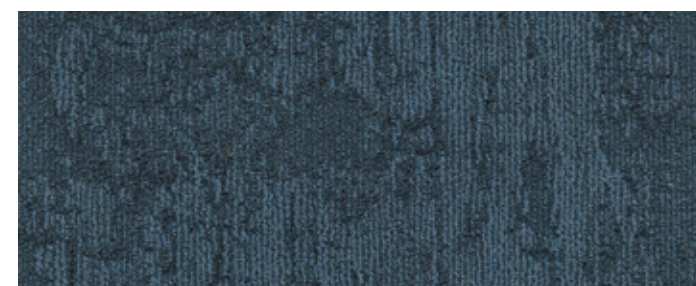
IST229-107 SEA ICE (Expedition EXP229-107, Shackleton SHK229-107)



IST108-13 AVALANCHE (Expedition EXP108-13, Shackleton SHK108-13)



IST171-25 GREAT MELT (Expedition EXP171-25, Shackleton SHK171-25)



IST52-126 GLACIAL (Expedition EXP52-126, Shackleton SHK52-126)

ARCTIC SURVEY

Expedition | Isotherm | Shackleton

SPECIFICATION

Construction

Tufted, Multi-Level Loop

Tile Size

25 cm x 1 m

Yarn Type

Universal® Fibers Solution-Dyed Nylon Type 6,6

Stain Repel & Resist | Soil Release

StainSmart®

Antimicrobial

AlphaSan® AF Built-In Protection

Dye Method

Solution Dyed

Gauge

1/12

Stitches Per Inch

Expedition: 12.4

Shackleton | Isotherm: 12.6

Tufts

Expedition: 149/in² (2,308/100 cm²)

Shackleton | Isotherm: 151/in² (2,339/100 cm²)

Pile Thickness

Expedition: 0.19" (4.83 mm)

Shackleton | Isotherm: 0.21" (5.33 mm)

Standard Backing

WellBAC™ Comfort (PVC-Free)

(non-reactive cushion backing)

Recyclable

100%

Nominal Total Thickness

Expedition: 0.38" (9.7 mm)

Shackleton | Isotherm: 0.42" (10.7 mm)

Nominal Total Weight

Expedition: 107 oz/yd² (3,628 g/m²)

Shackleton | Isotherm: 108 oz/yd² (3,662 g/m²)

Flammability (Radiant Panel Test)

Expedition: CRF = 6.9kW/m² ; Smoke = 302%.mins

Shackleton | Isotherm: CRF = 5.8kW/m²; Smoke = 359%.mins

VOC

Pass (ISO 10580:2010)

ACCS Grading

Commercial Extra Heavy Duty & Stairs CEHD(S)4*

Residential Extra Heavy Duty & Stairs REHD2(S)6*

ECS Grading

Expedition: Level 4 (Certificate No. 17135)

Shackleton | Isotherm: Level 4 (Certificate No. 17136)

Environmental

Declare - 3rd Party Verified RED LIST FREE

Acoustic Rating

NRC≥0.25 (Exceeds standard acoustic requirements of the Carpet Institute)

Ln, w ≤47 dB (Well below the BCA limit of 62dB)

Recommended Maintenance

Refer to Milliken-Ontera Care & Maintenance guide

Millicare® Care plan available in some regions.

Exclusive Site-Related Solutions (SRS)

Milliken-Ontera cushion backed tile + non-reactive standard

adhesive means install 60 days after concrete pour, fully

warranted no testing required. Refer to millikenontera.com.au

Warranties

15 Year Wear Warranty

15 Year Dimensional Stability warranty

15 Year Anti-Static Warranty

15 Year Castor Chair wear Warranty

Recommended Installation Method



PLANKS

TractionBack®

Simplify your modular installation with Milliken's patented TractionBack®, an innovative backing system that is faster, more costefficient, and environmentally superior to wet adhesives and peel-and-stick carpet tile.



Alliance
Founding
Member



Declare.



Australia

Toll Free: 1800 668 372

New Zealand

Toll Free: 0800 668 372

www.millikenontera.com.au
(Australia & New Zealand)

This WellBAC™ cushion-back tile product is covered by one or more patents, published applications and/or patents pending. Specifications are subject to normal manufacturing tolerances and may be subject to change without prior notice. Copies of actual test results are available upon request.

Cover image: *Nature and landscapes of Greenland*,
by Denis Burdin. © 2016 Shutterstock

© 2019 Milliken & Company | Design © Milliken & Company



Growing greener for over 100 years.

Visit milliken.com for more information.

Images in this brochure are approximate for colour and pattern scale. Please use actual carpet samples to make your final selections.