



THE SPACE BETWEEN

Milliken™

D/LUX

LUXURY DEMATERIALIZED

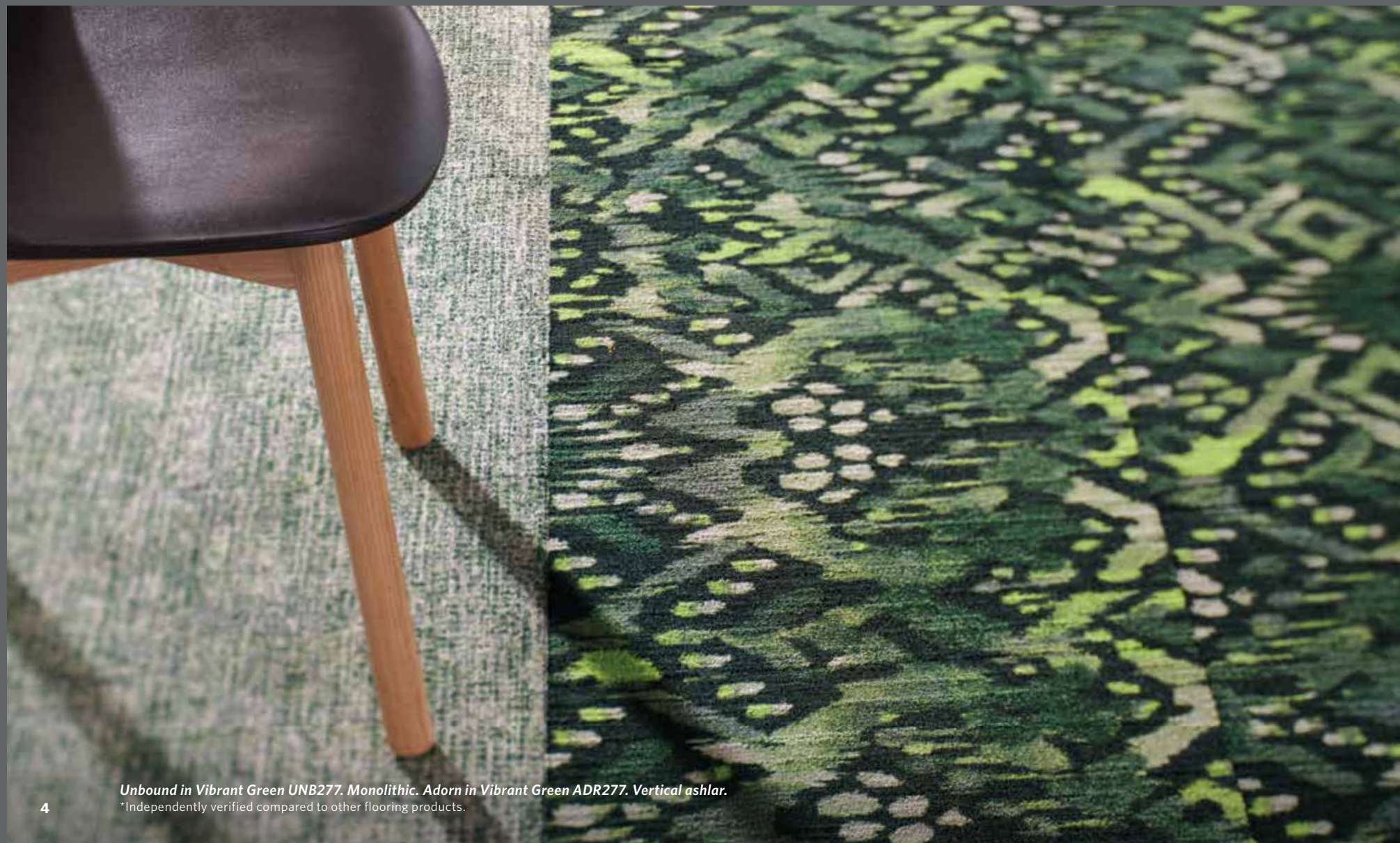
THE SPACE BETWEEN

Balanced delicately between commercial, residential and hospitality design, **The Space Between** pulls from handmade traditional printmaking techniques featuring rustic patterns with textural nuances. The saturated pigment of natural vegetable dyes influences the vibrant colorations. The latest collection from Milliken features two new patterns utilizing advances in both tufting and color application, layering a time-worn aesthetic with leading-edge manufacturing technology in ways that feel at home in any environment.



D / LUX

Sustainable design never goes out of style. As part of Milliken's D/LUX program, we have constructed a plush option, full of textural intrigue and reduced embodied carbon. Composed of 55% recycled materials, this collection has less harmful impact on the planet while simultaneously achieving high style and comfort.



4 *Unbound in Vibrant Green UNB277. Monolithic. Adorn in Vibrant Green ADR277. Vertical ashlar.*
*Independently verified compared to other flooring products.



Adorn in Stormy Grey ADR133. Vertical ashlar. 5



6 Adorn in Feather ADR273. Vertical ashlar.



Adorn in Velvety Brown ADR17, ashlar and Unbound in Stormy Grey UNB133. Monolithic.

PATTERN 1 A D O R N

Make a bold statement with Adorn's Turkish rug-inspired design. This sought after design is given new life with intricate color play and rich textures.



Adorn in Vibrant Green ADR277. Vertical ashlar.
Unbound in Vibrant Green UNB277. Monolithic.



Adorn in Wispy Gold ADR134 and Unbound in Sandy UNB259. Vertical ashlar.

PATTERN 2
UNBOUND

Ground interiors with a classic tweed texture. Unbound takes this popular pattern and ushers it into modern-day designs, utilizing subtle color gradients and inviting hues.



Unbound in Glistening Grey UNB106. Monolithic.



*Unbound in Glistening Grey UNB106. Monolithic.
(LVT) Merge Forward, High Ground in Shoreline HIG220. Random.*



8 *Unbound in Stormy Grey UNB133. Monolithic.*



*Unbound in Shadowy Black UNB119, Steely Gaze UNB118, Vibrant Green UNB277,
Glistening Grey UNB106 and Wispy Gold UNB134. Monolithic.*



*Unbound in Glistening Grey UNB106. Monolithic.
Adorn in Feather ADR273. Vertical ashlar.*



*Unbound in Shadowy Black UNB119 and
Adorn in Stormy Grey ADR133. Vertical ashlar.*



*Adorn in Vibrant Green ADR277 and
Unbound in Vibrant Green UNB277. Vertical ashlar.*



*Adorn in Velvety Brown ADR17. Vertical ashlar.
Unbound in Stormy Grey UNB133. Monolithic.*

PRINTWORKS™

With our innovative precision dye technology, our PrintWorks™ capabilities bring detailed artistic visions to life. Take advantage of PrintWorks™ ultimate color flexibility and unique patterning in precise registration and see what's possible in the new age of carpet design.



*Adorn in Velvety Brown ADR17. Vertical ashlar.
Unbound in Stormy Grey UNB133. Monolithic.*



Unbound in Glistening Grey UNB106. Monolithic.

MODIFIED STANDARD

Our versatile designs can be adjusted to fit your needs and project requirements, while also maintaining timely delivery expectations.

THE SPACE BETWEEN
A D O R N



WISPY GOLD
ADR134



SANDY
ADR259



STEELY GAZE
ADR118



SHADOWY BLACK
ADR119



VELVETY BROWN
ADR17



STONY GREY
ADR124-13



FEATHER
ADR273



VIVID BLUE
ADR249



GLEAMING
ADR146



STORMY GREY
ADR133



MISTY SAGE
ADR203



VIBRANT GREEN
ADR277



GLISTENING GREY
ADR106

THE SPACE BETWEEN
U N B O U N D



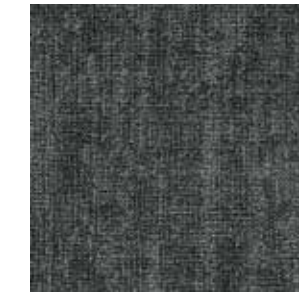
WISPY GOLD
UNB134



SANDY
UNB259



STEELY GAZE
UNB118



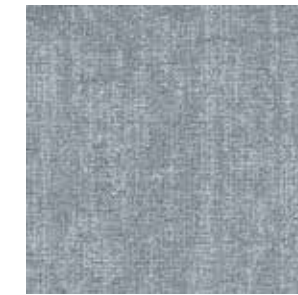
SHADOWY BLACK
UNB119



VELVETY BROWN
UNB17



STONY GREY
UNB13



FEATHER
UNB273



VIVID BLUE
UNB249



GLEAMING
UNB146



STORMY GREY
UNB133



MISTY SAGE
UNB203



VIBRANT GREEN
UNB277



GLISTENING GREY
UNB106

Milliken™ FOR HUMANKIND.

At our core, we are driven to make a positive impact on people and the world around us through our products and services. We are stronger together and guided by our curiosity and creativity to develop new solutions.

Scan to learn more about our
commitment to sustainability.



M/PACT™

CARBON NEUTRAL PRODUCT

Climate change is one of the greatest threats facing humanity. That's why our flooring products are carbon neutral everywhere in the world. Let's work together for a better tomorrow.

Additional Sustainable Features

The Space Between is manufactured with WellBAC® Comfort cushion backing, and is certified NSF-140 Gold with 52% pre-consumer recycled content by total weight. **The Space Between** is also available with our NSF-140 Platinum backing option. All Milliken modular carpets carry Environmental Product Declarations and Health Product Declarations, which contribute to LEED certification. Additionally, Milliken modular carpets carry Declare® transparency labels and comply with the Red List Imperative of the Living Building Challenge.™





THE SPACE BETWEEN

Unbound / Adorn

Construction
Tufted, Textured Loop
and Cut Pile

Tile Size
50 cm x 50 cm
(19.7" x 19.7")

Yarn Type
Milliken-Certified
WearOn® Nylon

**Stain Resist / Soil
Release**
StainSmart®

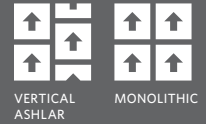
Finished Pile Thickness
0.112" (2.84 mm)

**Average Density
(Finished)**
5,300

Standard Backing
PVC-Free WellBAC®
Comfort Cushion
Available with
TractionBack®

**Texture Appearance
Retention Rating (TARR)**
Heavy Traffic End-Use
Applications

**Recommended
Installation Method(s)**
Adorn: Vertical Ashlar
Unbound: Monolithic,
Vertical Ashlar



SUSTAINABLE FEATURES

The Space Between is manufactured with WellBAC® Comfort cushion backing, and is certified NSF-140 Gold with 52% pre-consumer recycled content by total weight. **The Space Between** is also available with our NSF-140 Platinum backing option. All Milliken modular carpets carry Environmental Product Declarations and Health Product Declarations, which contribute to LEED certification. Additionally, Milliken modular carpets carry Declare® transparency labels and comply with the Red List Imperative of the Living Building Challenge.™



TRACTIONBACK

Simplify your modular installation with Milliken's patented TractionBack®, an innovative backing system that is faster, more cost efficient, and environmentally superior to wet adhesives and peel-and-stick carpet tile.

Images in this brochure are approximate for color and pattern scale. Please use actual samples to make your final selections.

SHOWN ON THE COVER

(Front) Unbound in Glistering Grey UNB106. Monolithic. Adorn in Feather ADR273. Vertical ashlar.

(Back) Unbound in Vibrant Green UNB277. Monolithic. Adorn in Vibrant Green ADR277. Vertical ashlar.

Milliken™

Customer Concierge 800.824.2246 | millikenfloors.com
© 2023 Milliken & Company | Design © Milliken & Company

2710035268
CP 0523