



LVT | ABSTRACT

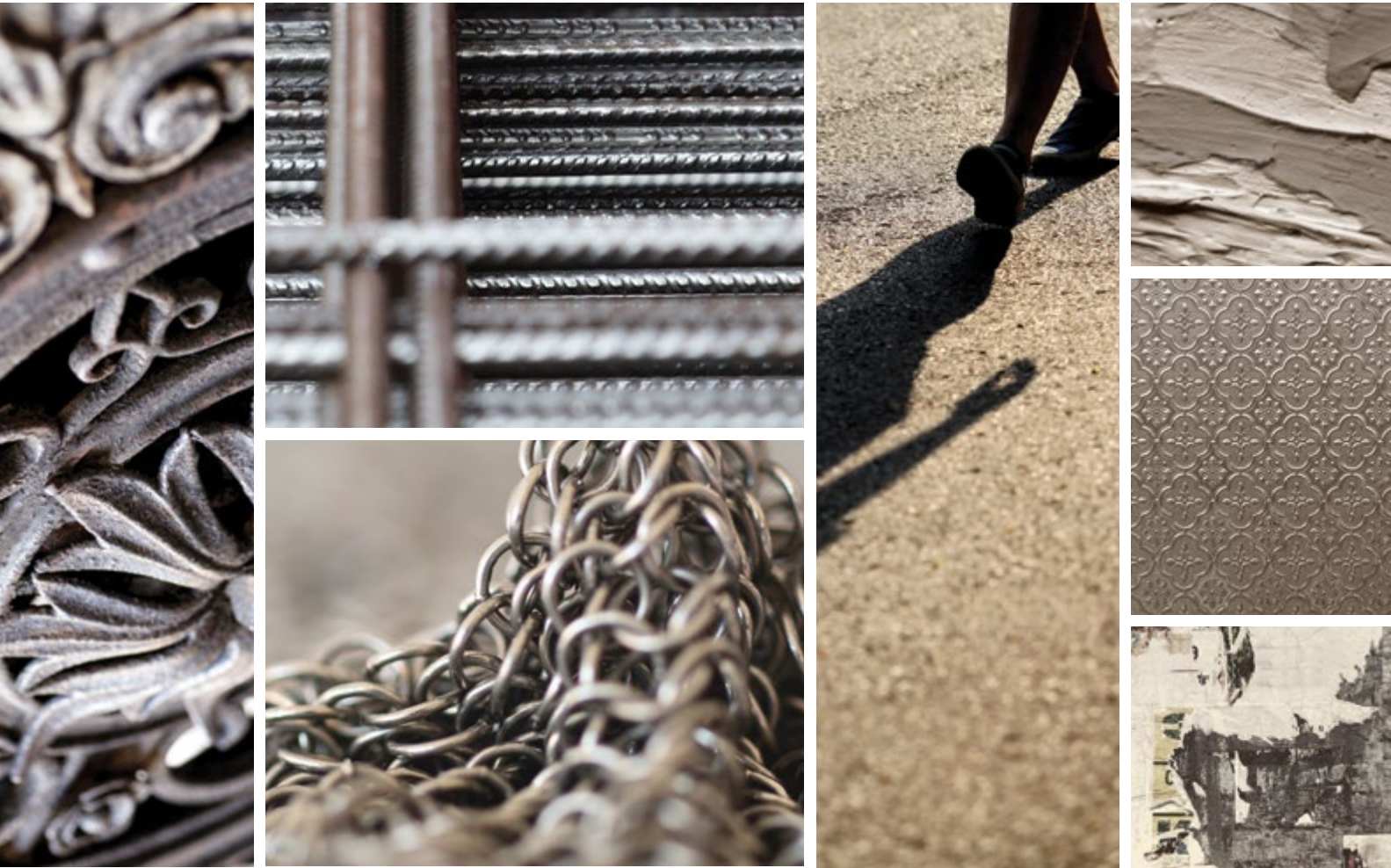
Loose Lay



Milliken™

ABSTRACT

Textures inspired by the abstract world.



Introducing Abstract, a new LVT collection that explores intricate shapes and textures. With 7 distinctive patterns offered in a variety of dimensional tones, we invite you to discover our approach to tactility with a contemporary twist.

TACTUAL

Inspired by a chameleon of textured surfaces like snake skin and chain mail, Tactual is created with overlapping stippled spheres accentuated by the muted luster of metal.



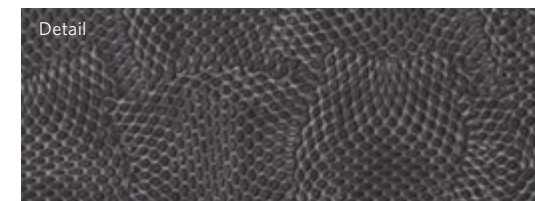
Tactual in Touch TAC234. Ashlar.



Contact TAC209



Touch TAC234



Perceive TAC153



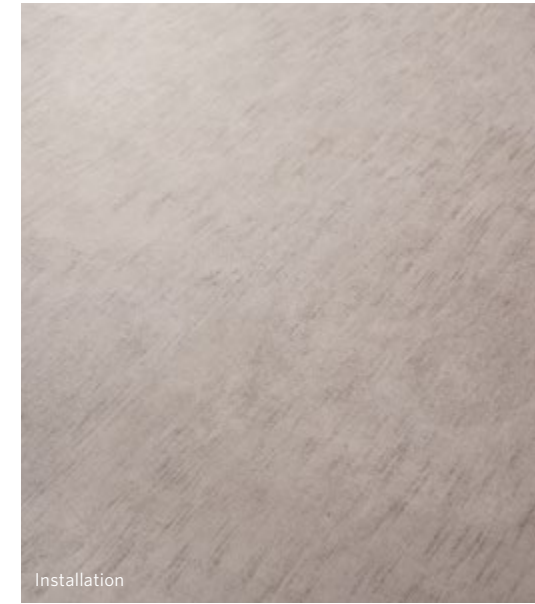
TILE SIZE 19.7" x 19.7" **PIECES / CARTON** 6 **WEIGHT / BOX** 29.1 lbs **FT² / BOX** 16 ft²

SENSATIONS

Coarse, brush-like strokes coupled with an intricate woven effect are emphasized by areas of tension and distress in the progressive Sensations, available in both warm and cool shades.



Sensations in Quiet SST202. Ashlar.



Installation



Detail

Quiet SST202



Installation

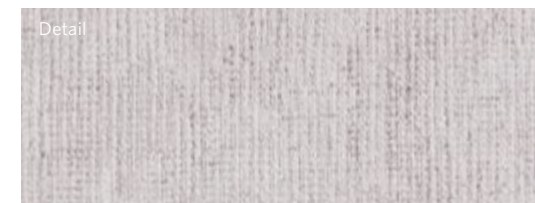


Detail

Wonder SST44



Installation



Detail

Chill SST209



Installation



Detail

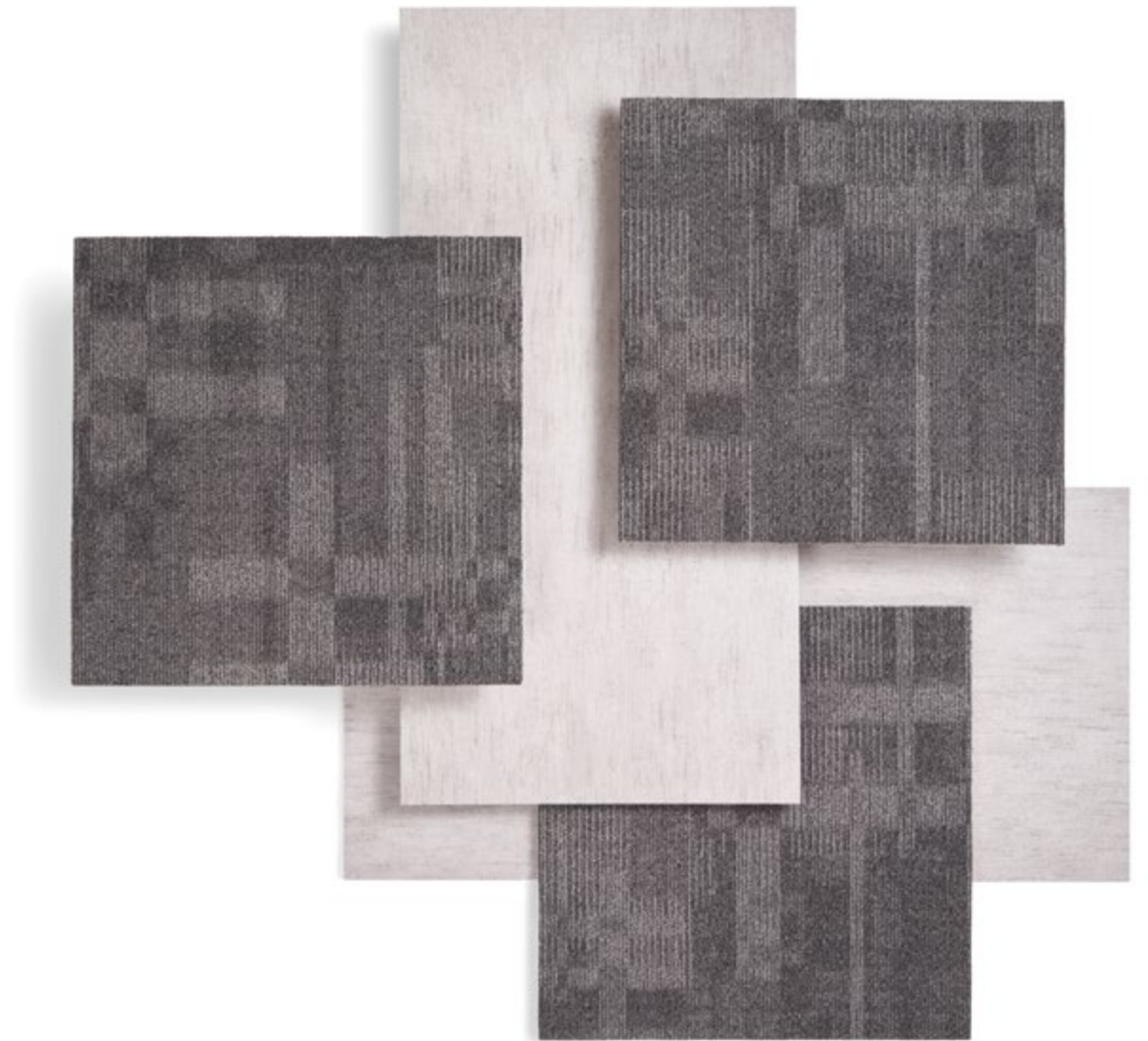
Calm SST250-5

TILE SIZE 18" x 36" PIECES / CARTON 4 WEIGHT / BOX 32.42 lbs FT² / BOX 18 ft²



Carpet: Ghost Artist, Facade in Obscura FAC13-118. Monolithic. **Sensations in Chill** SST209. Vertical ashlar.

CONCEPTUAL BALANCE REALIZED

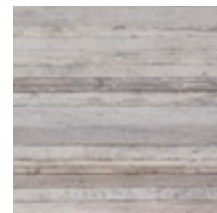


IMMERSIVE

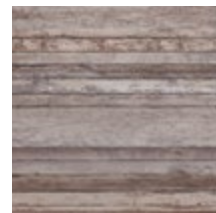
Endless Possibilities

Available in three distinct styles, Immersive encompasses several texturized surfaces found in nature, from weathered metal, to distressed stone and seasoned wood.

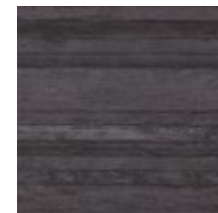
Square 19.7" x 19.7"



Rush



Vigor



Hasten

Cross Cut 7.9" x 39.4"



Rush



Vigor



Hasten

Vertical 7.9" x 39.4"



Rush



Vigor



Hasten



Immersive in **Vigor Cross Cut** IMC208-6. Vertical ashlar. Carpet: Modern Bliss, Moulage in Angora MOU144. 50cm x 50cm tiles. Monolithic.

IMMERSIVE Square

Available in tiles measuring 19.7" x 19.7", the square cut beautifully highlights Immersive's subtle intricacies and color flow.



Immersive in **Rush Square** IMS207-209 and **Hasten Square** IMS27-79. Monolithic.



Installation



Detail

Rush Square IMS207-209



Installation

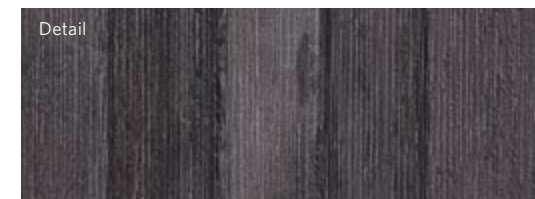


Detail

Vigor Square IMS208-6



Installation



Detail

Hasten Square IMS27-79



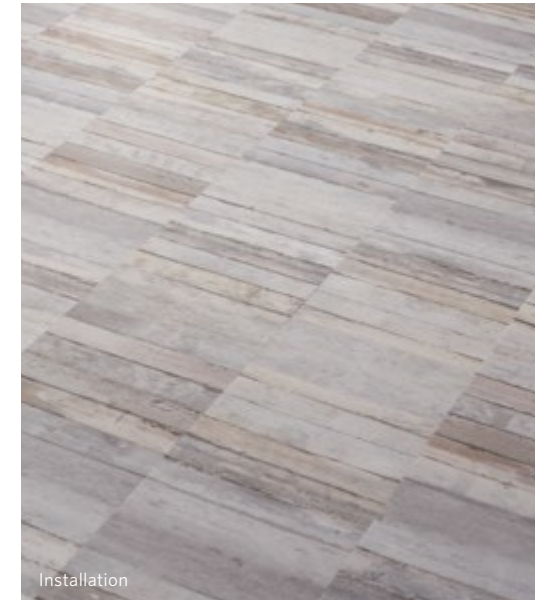
TILE SIZE 19.7" x 19.7" PIECES / CARTON 6 WEIGHT / BOX 29.1 lbs FT² / BOX 16 ft²

IMMERSIVE *Cross Cut*

Immersive's Cross Cut rustic pattern showcases a different but equally beautiful angle, featuring rows of horizontally spaced stripes measuring 7.9" x 39.4" in size.



Immersive in **Rush Cross Cut** IMC207-209 and **Hasten Cross Cut** IMC27-79. Random.



Installation



Detail

Rush Cross Cut IMC207-209

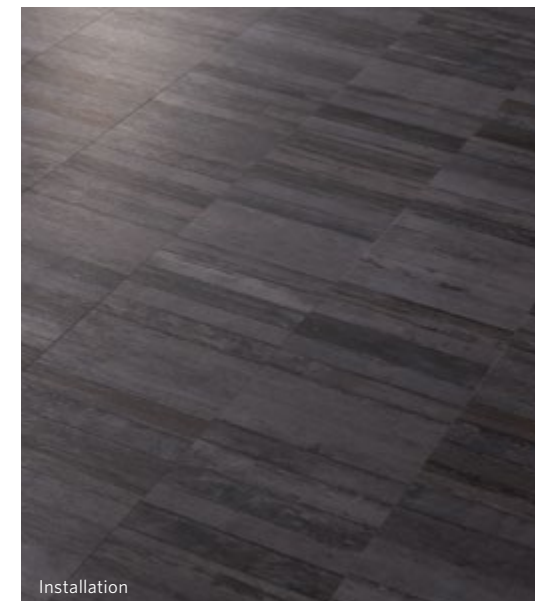


Installation



Detail

Vigor Cross Cut IMC208-6



Installation



Detail

Hasten Cross Cut IMC27-79

TILE SIZE 7.9" x 39.4" PIECES / CARTON 8 WEIGHT / BOX 31 lbs FT² / BOX 17.2 ft²

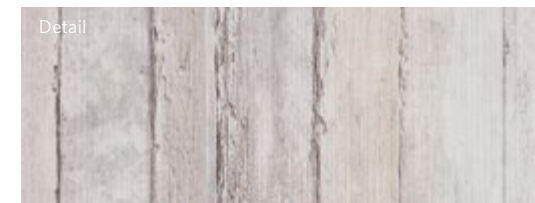
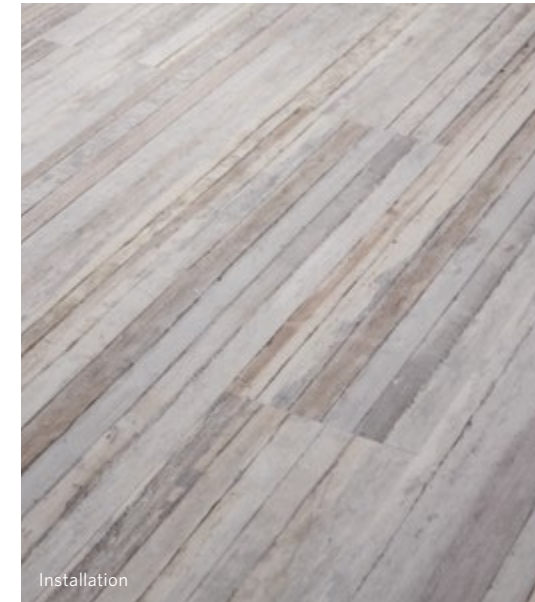


IMMERSIVE Vertical

Immersive's vertical selection offers a bolder directional flow, showcasing the pattern etched from top to bottom and measuring 7.9" x 39.4" in size.



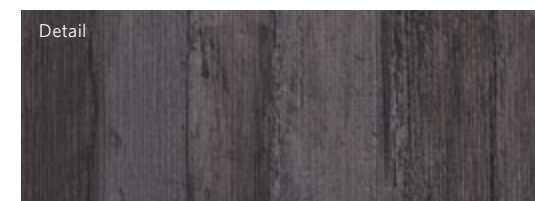
Immersive in Rush Vertical IMV207-209. Vertical ashlar. Carpet: City Proper, Underground in Madison Square UDG48. Ashlar.



Rush Vertical IMV207-209



Vigor Vertical IMV208-6



Hasten Vertical IMV27-79

TILE SIZE 7.9" x 39.4" PIECES / CARTON 8 WEIGHT / BOX 31 lbs FT² / BOX 17.2 ft²





Sensation in Quiet SST202. **Immersive in Vigor Square** IMS208-6. Monolithic and random insets.

Abstract LVT offers brilliant design flexibility with patterns and hues intended to complement one another. Mix and match style, color and size for a floorscape that is expressively yours.

EERO

Featuring a fascinating outburst of pattern and texture, Eero brings a distressed aesthetic with a modern twist to spaces, available in a selection of four intriguing tones.



Eero in Drawing EER108-215-209. Vertical ashlar.



Installation



Detail

Drawing EER108-215-209



Installation



Detail

Plan EER25-144-208



Installation



Detail

CAD EER79-145-120



Installation



Detail

Interior EER79-13

TILE SIZE 9" x 59.7" PIECES / CARTON 6 WEIGHT / BOX 46.14 lbs FT² / BOX 22.4 ft²

TANGIBLE

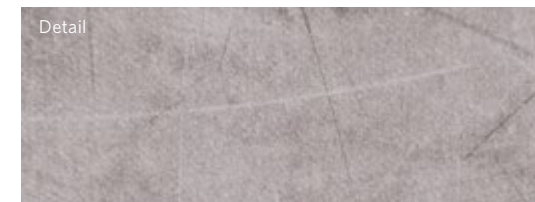
Bring light and depth to any space with the geologically inspired Tangible, imbued with the unique splendor of a crystalline rock or refinished stone.



Tangible in Dusk TAN79. Vertical ashlar.



Installation



Detail

Dawn TAN6



Installation



Detail

Dusk TAN79

TILE SIZE 18" x 36" PIECES / CARTON 4 WEIGHT / BOX 32.42 lbs FT² / BOX 18 ft²

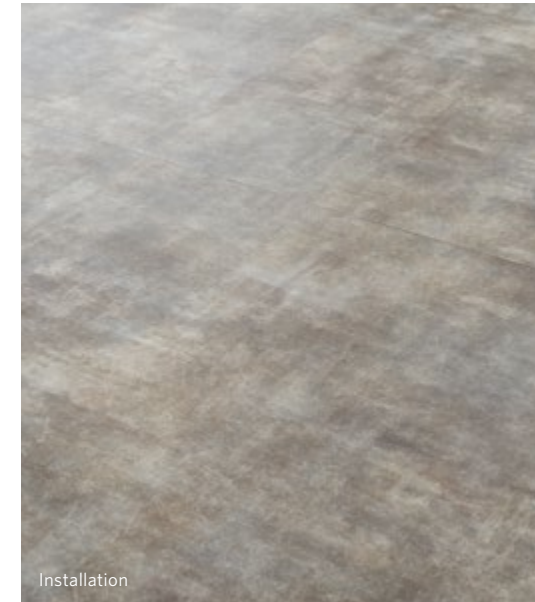
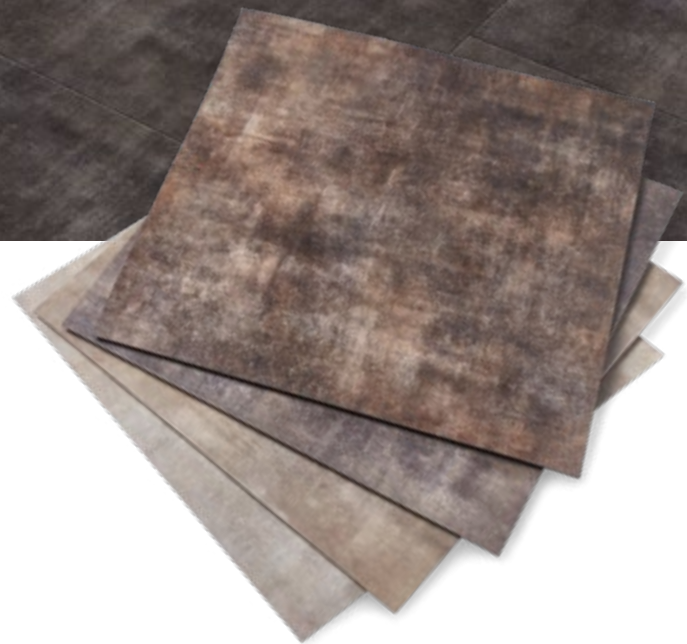


POLISHED CONCRETE

Exuding a smooth and graceful confidence, Polished Concrete adds a rich sophistication to spaces with a soft pattern highlighted by four opulent shade selections.



Polished Concrete in **Sandpaper** POL13. Ashlar. Carpet: Lineation, Triangular Path in Morning Blend T6P15-114. Monolithic.

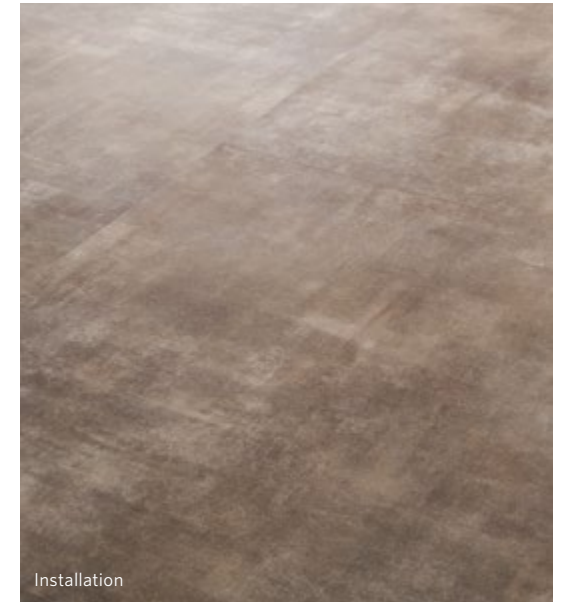


Installation



Detail

Scoring POL144



Installation

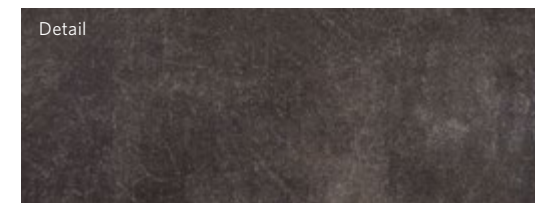


Detail

Trowel POL55

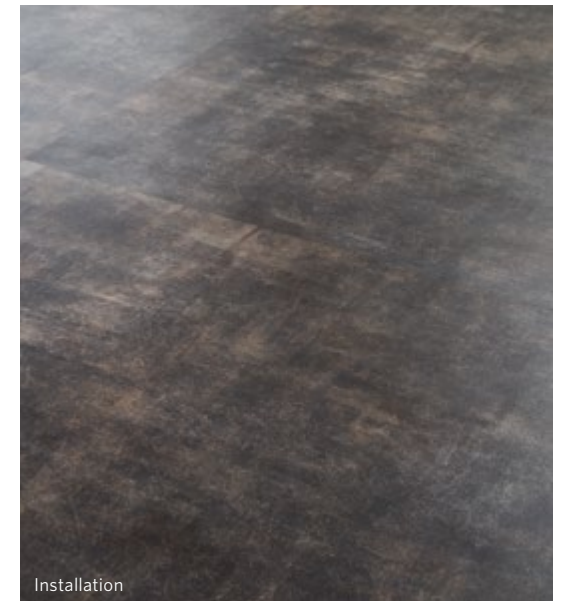


Installation

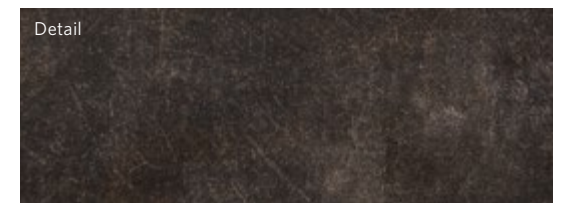


Detail

Sandpaper POL13



Installation



Detail

Polish POL67

TILE SIZE 36" x 36" PIECES / CARTON 4 WEIGHT / BOX 74.16 lbs FT² / BOX 36 ft²

POWERGRID

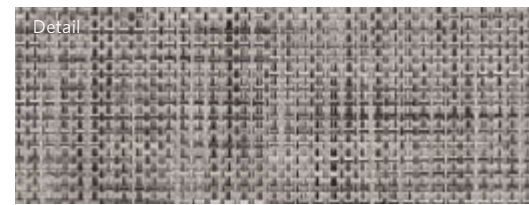
Energetic and intertwined, PowerGrid showcases an intricate design with gradations of value and direction, bringing a strong and influential flow to spaces.



PowerGrid in Cable PWG171. Ashlar.



Installation



Detail

Cable PWG171



Installation

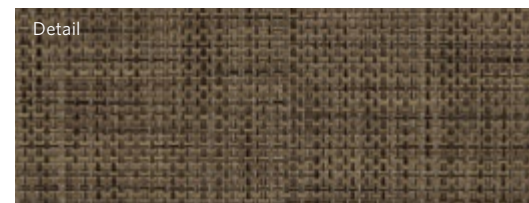


Detail

Conduit PWG15



Installation



Detail

Wire PWG22



Installation

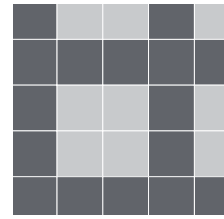
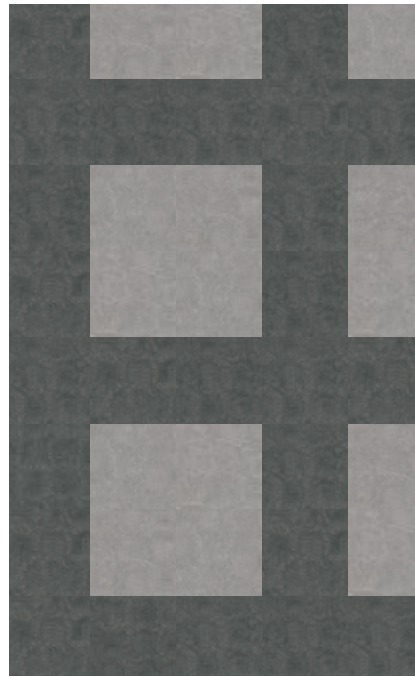


Detail

Station PWG97

TILE SIZE 36" x 36" PIECES / CARTON 4 WEIGHT / BOX 74.16 lbs FT² / BOX 36 ft²

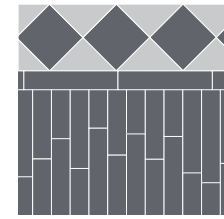
INSTALLATION INSPIRATION



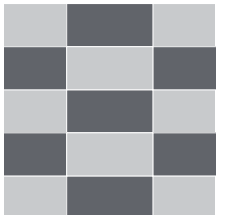
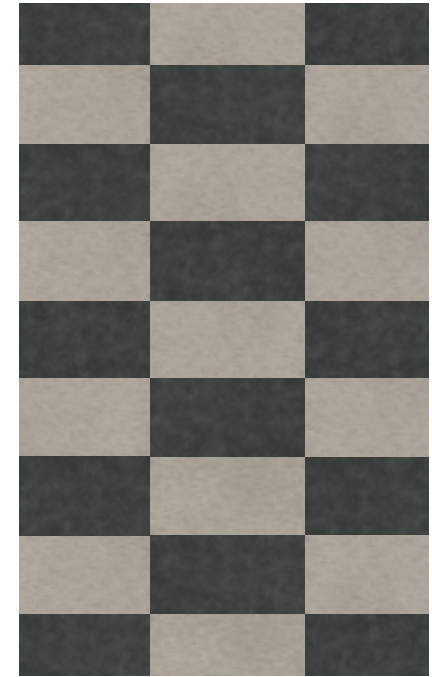
Tactual in Perceive TAC153.
Tactual in Contact TAC209.



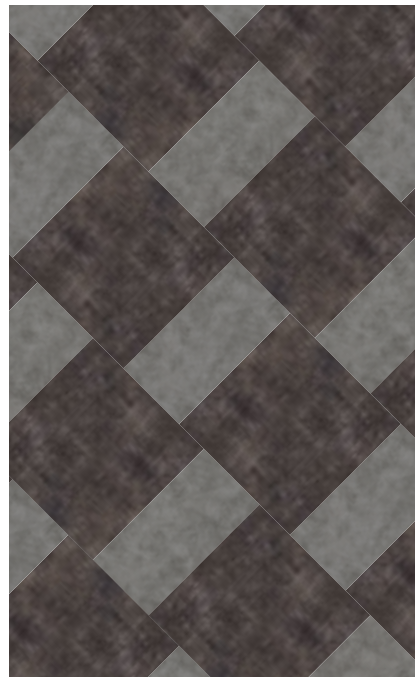
Immersive in Rush Vertical IMV207-209.
Immersive in Vigor Vertical IMV208-6.
Immersive in Hasten Vertical IMV27-79.



Immersive in Rush Square IMS207-209.
Immersive in Vigor Square IMS208-6.
Immersive in Vigor Vertical IMV208-6.



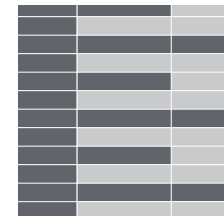
Sensations in Quiet SST202.
Tangible in Dusk TAN79.



Polished Concrete in Sandpaper POL13.
Tangible in Dawn TAN6.



Tangible in Dusk TAN79.
Eero in Plan EER25-144-208.



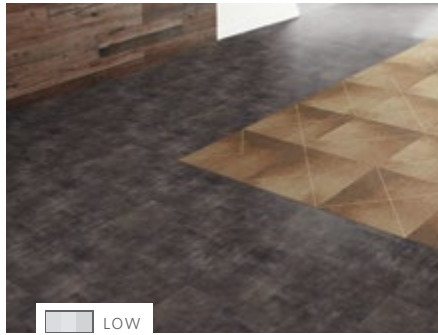
Immersive in Vigor Vertical IMV208-6.
Immersive in Hasten Vertical IMV27-79.



Immersive in Rush Square IMS207-209.
Immersive in Vigor Cross Cut IMC208-6.
Immersive in Hasten Cross Cut IMC27-79.
Immersive in Vigor Vertical IMV208-6.
Immersive in Hasten Vertical IMV27-79.

QUICK REFERENCE GUIDE

POLISHED CONCRETE



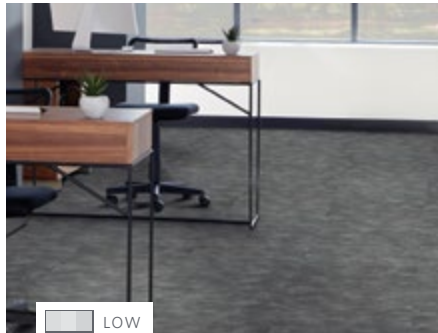
TILE SIZE
36" x 36" (91.4cm x 91.4cm)

COLORS

- Scoring** POL144
- Trowel** POL55
- Sandpaper** POL13
- Polish** POL67

LOW

TANGIBLE



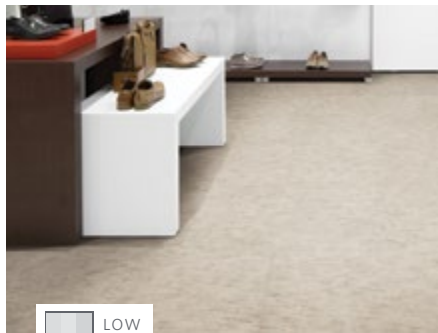
TILE SIZE
18" x 36" (46cm x 91.4cm)

COLORS

- Dawn** TAN6
- Dusk** TAN79

LOW

SENSATIONS



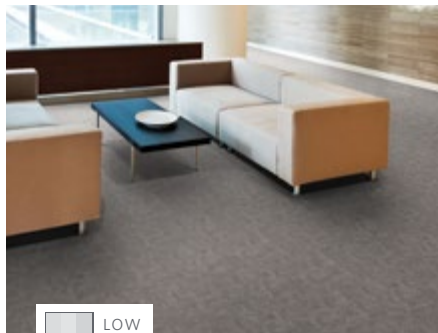
TILE SIZE
18" x 36" (46cm x 91.4cm)

COLORS

- Quiet** SST202
- Wonder** SST44
- Chill** SST209
- Calm** SST250-5

LOW

TACTUAL



TILE SIZE
19.7" x 19.7" (50cm x 50cm)

COLORS

- Contact** TAC209
- Touch** TAC234
- Perceive** TAC153

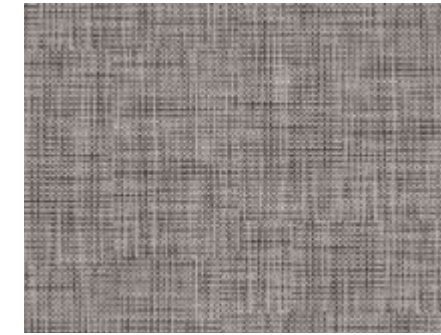
LOW

Shade Variation Guide



Beautiful variations of shade within a single pattern will be found in this unique LVT product, ranging from low, to moderate, to high. Low shade variation will feature soft and subtle gradations. Moderate shade variation will contain a moderately more distinguishable variety of hue. And, a high shade variation will model the highest level of contrast.

POWERGRID



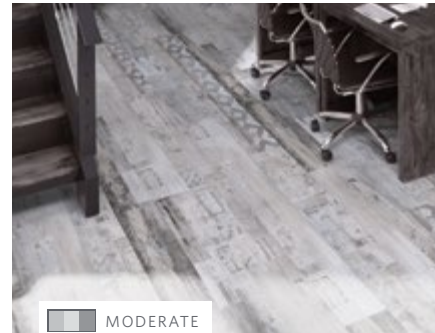
TILE SIZE
36" x 36" (91.4cm x 91.4cm)

COLORS

- Cable** PWG171
- Conduit** PWG15
- Wire** PWG22
- Station** PWG97

LOW

EERO



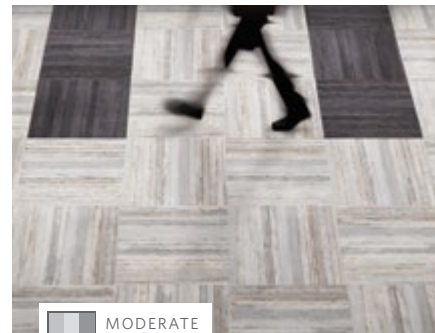
TILE SIZE
9" x 59.7" (23cm x 152cm)

COLORS

- Drawing** EER108-215-209
- Plan** EER25-144-208
- CAD** EER79-145-120
- Interior** EER79-13

MODERATE

IMMERSIVE



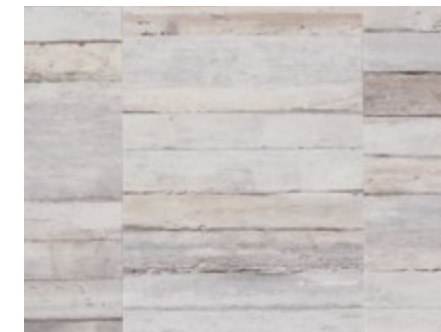
Square

TILE SIZE
19.7" x 19.7" (50cm x 50cm)

COLORS

- Rush** IMS207-209
- Vigor** IMS208-6
- Hasten** IMS27-79

MODERATE



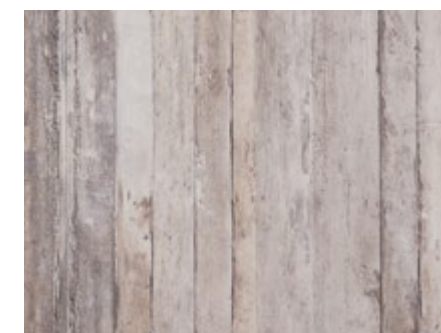
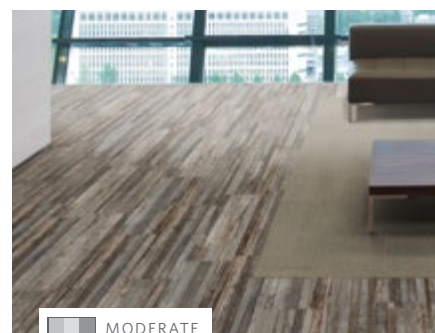
Cross Cut

TILE SIZE
7.9" x 39.4" (20cm x 100cm)

COLORS

- Rush** IMC207-209
- Vigor** IMC208-6
- Hasten** IMC27-79

MODERATE



Vertical

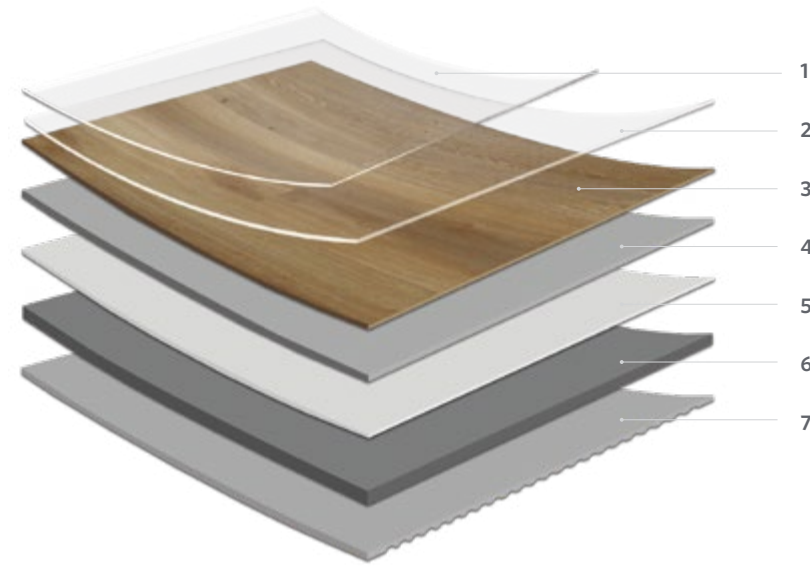
TILE SIZE
7.9" x 39.4" (20cm x 100cm)

COLORS

- Rush** IMV207-209
- Vigor** IMV208-6
- Hasten** IMV27-79

MODERATE

LOOSE LAY LVT CONSTRUCTION



Wear Layer Thickness
28 mil (0.7 mm)

Overall Thickness
.197" (5 mm)

- 1. REINFORCED POLYURETHANE COATING**
Provides excellent stain and abrasion resistance, eliminates the need for wax, polishes and harsh chemicals, providing reduced maintenance costs and improved IAQ
- 2. TRANSPARENT WEAR LAYER**
Hard wearing, provides long lasting appearance retention in heavy commercial traffic environments
- 3. PRINTED LAYER**
This layer utilizes high definition print film for stunning, eye-perfect, authentic visuals
- 4. CORE LAYER**
High performance layer that provides extra stability and durability
- 5. GLASS FIBER LAYER**
Minimizes expansion and contraction under extreme temperatures
- 6. BACKING LAYER**
High vinyl content backing layer provides robust foundation and impact resistance
- 7. NON-SKID BACKING**
Allows adhesive free installation and replacement

SHIPPING INFORMATION

DESIGN NAME	TILE SIZES	PCS / CARTON	LBS./BOX	FT ² /BOX
Eero	9" X 59.7"	6	46.14	22.4
Immersive Cross Cut	7.9" X 39.4"	8	31	17.2
Immersive Square	19.7" X 19.7"	6	29.1	16
Immersive Vertical	7.9" X 39.4"	8	31	17.2
Polished Concrete	36" X 36"	4	74.16	36
PowerGrid	36" X 36"	4	74.16	36
Sensations	18" X 36"	4	32.42	18
Tactual	19.7" X 19.7"	6	29.1	16
Tangible	18" X 36"	4	32.42	18

LVT ACOUSTICAL PERFORMANCE

The reduction of impact noise can be an important consideration when selecting LVT for your project, which is why Milliken's Luxury Vinyl Tile is designed to provide excellent noise reduction compared to natural equivalents. By either selecting the correct product or by combining with an acoustical underlayment or special adhesive, these products will meet and/or exceed International Building Codes (IIC) and STC ratings.

IIC AND STC RATINGS

TEST METHOD	CEILING ASSEMBLY	WITH/WITHOUT UNDERLAYMENT	IIC	STC
ASTM E492/ASTM E90	6" Concrete slab with drop ceiling	No underlayment	58	64
ASTM E492/ASTM E90	6" Concrete slab with drop ceiling	Milliken Premium LVT underlayment	69	65
ASTM E492/ASTM E90	6" Concrete slab with drop ceiling	Milliken Acousti-loc adhesive - No Underlayment	68	62

LVT UNDERLAYMENT

Milliken acoustic underlayment is the perfect solution for a quiet and comfortable floor.



- Made with high-density polyurethane foam
- Reduces floor noise by providing excellent sound absorption
- 100% recyclable and environmentally friendly
- Contains anti-microbial treatment
- Quick and easy installation
- Suitable for glue down and Loose Lay LVT installations

UNDERLAYMENT SPECIFICATIONS

PROPERTY	SPECIFICATION
Materials	100% High-Density Polyurethane foam underlayment bonded to moisture vapor film
Roll Size	100 ft ² (3' W x 33.34' L)
Thickness	1.5 mm
Width	33.34"
Density	30 lbs
Weight	2.65 oz/ ft ²
Rolls Per Box	4
Boxes Per Pallet	9
Antimicrobial Treatment	Yes
Thermal Resistance	R-Value .17
Compression Resistance ASTM D3676	41.51 psi
Compression Set ASTM D3574	4%
Flammability Rating	Passes Federal Flammability Standards DOC-FF-1-70
Smoke Density	Passes, 110 max
Product Emissions	Exceeds VOC emissions requirements
LEED Credits	MR 6: Rapidly renewable resource, EQ 4.3: Low emitting VOC's



Style Backed by Performance

Milliken Floor Covering offers products and expertise in all areas of your commercial spaces, including high-performance entryway systems, modular and broadloom carpet, luxury vinyl tile and milliCare®. Simplify your flooring projects by working with a trusted partner that lets you focus on enjoying the process of creating a great space.



Complete Performance and Support

ENTRYWAY SYSTEMS

The OBEX® brand of products offers highly effective, comprehensive modular entry solutions designed as a three-zone barrier system to prevent dirt and moisture from entering the building. Available in coordinated colors and patterns, OBEX entry products are engineered to increase the functionality of a building's entrance without forsaking elements of design or aesthetic.

MODULAR CARPET AND BROADLOOM

Milliken's broadloom and carpet tile incorporate the latest innovations in tufting and dyeing technology, achieving unique looks and excellent performance. All carpet tile products have cushion backing for an extended lifespan, as well as ergonomic and environmental benefits.

LUXURY VINYL TILE

From natural looks of wood and stone to more modern textures and abstracts, Milliken's collection of Luxury Vinyl Tile flooring creates new options for a commercial or hospitality interior. Our simple-to-search Color Reference system provides easy coordination of the LVT options to modular and broadloom carpets.

MILLCARE®

milliCare takes caring for your flooring and textiles off your to-do list, which means you can skip right to the part where you get to lean back, put your hands behind your head, and be a hero for keeping a beautifully cleaned space.



WARRANTY

Milliken Luxury Vinyl Tile products are backed by a 12 year Heavy Commercial & Lifetime Residential wear warranty, ensuring quality and giving peace of mind. For further information visit » millikenfloors.com/warranty



ENHANCED INVENTORY PROGRAM

With an enhanced inventory level for large installations containing select patterns and colors, Milliken's USA based inventory system makes it easy to respond as quickly as possible to your project needs.



SUSTAINABILITY

In keeping with Milliken's long-standing culture of sustainability, our Luxury Vinyl Tile products are 100% Ortho-Phthalate free. They do not contain problematic post-consumer recycled material, and they are manufactured at a 'zero landfill' facility, which recycles 100% of all water used in onsite manufacturing. Further, Milliken's Luxury Vinyl Tiles are certified to the most stringent global environmental standards, including: Floorscore, EPD, Declare, REACH, ISO:9001 & 14001, and OHSAS 18001. For further information, visit » millikenfloors.com/sustainability



MOISTURE MANAGEMENT

With Milliken's specialty LVT adhesive, our Luxury Vinyl Tile products can be installed in environments encountering high moisture readings up to 95% Relative Humidity. For further information, visit » millikenfloors.com/moisture

LVT | ABSTRACT

Loose Lay



ABSTRACT WORKS WITH NATURAL

Explore more design possibilities by combining selections from both the Abstract and Natural LVT collections. Offering brilliant flexibility with patterns and hues intended to complement one another, you can freely mix and match your favorites to create a floorscape that is expressively yours.

Construction

High Performance Luxury Vinyl Tile

Finish

Reinforced Polyurethane Coating

Wear Layer Thickness

28 mil (0.7 mm)

Overall Thickness

0.197" (5.0 mm)

Edge Profile

Micro Bevel

Critical Radiant Flux (ASTM E648)

Pass - Class I

Smoke Density (ASTM E662)

Pass - ≤ 450

Flexibility (ASTM F137)

Pass

Heat Stability by Color Change (ASTM F1514)

Pass

Light Stability (ASTM F1515)

Pass

Static Coefficient of Friction (ASTM D2047)

Pass

Dimensional Stability (ASTM F2199)

Pass

Resistance to Chemicals (ASTM F925)

Pass

ASTM E492 IIC Rating

58

ASTM E90 STC Rating

64

Static Load Limit (ASTM F970)

Pass

Installation

Freelay with perimeter glue

Warranty

12 Year Limited Commercial Wear Warranty

LVT ENVIRONMENTAL STANDARDS

100% REACH Complaint FloorScore® certified Declare ingredient label Third Party Certified EPD. Milliken LVT is highly durable resilient flooring engineered with the highest quality raw materials to provide unsurpassed performance and enduring aesthetics. Milliken LVT is 100% phthalate free utilizing bio-based plasticizers derived from soya bean oil as the phthalate alternative. All production waste is granulated and recycled into backing production to create an internal closed loop recycling process. Milliken LVT is manufactured at facilities that are ISO 9001 and ISO 14001 compliant.



Growing greener for over 100 years.

This product has a UL® Environment 3rd party verified Environmental Product Declaration (EPD). A copy of the EPD is available online at millikencarpet.com/epd and productguide.ulenvironment.com.

Specifications are subject to normal manufacturing tolerances and may be changed without prior notice. Images in this brochure are approximate for color and pattern scale. Please use actual product samples to make your final selections.