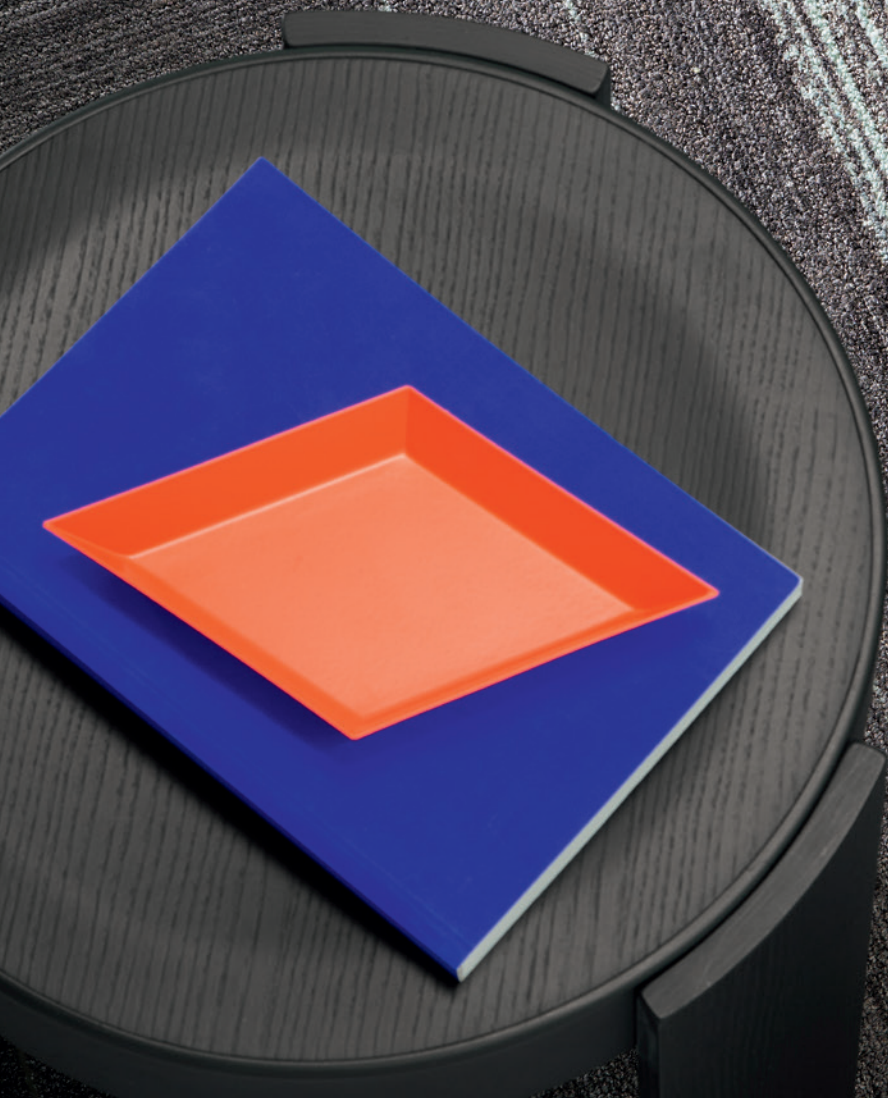


COLOUR  
COMPOSITIONS

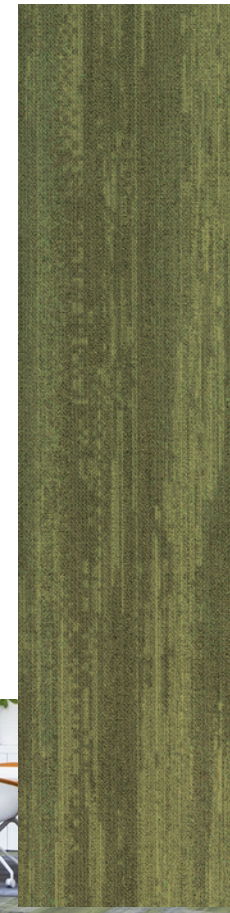
Milliken



# COLOUR COMPOSITIONS

Harmonious and balanced or challenging and unexpected, an exploration of colour and form has begun. Balancing a relationship of scale, shape, rhythm and pattern, a natural intuition is unlocked and expressed by each individual composition.

MUDSTONE  
CCM62

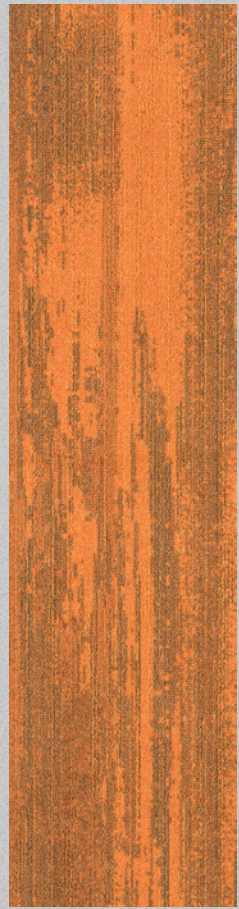


TRACTION MUDSTONE  
CCM108-62



Colour Compositions in Mudstone (CCM62) and  
Traction Mudstone (CCM108-62) | Ashlar (Vertical) Installation





VISCOSITY  
CCM128



TENSION VISCOSITY  
CCM48-128



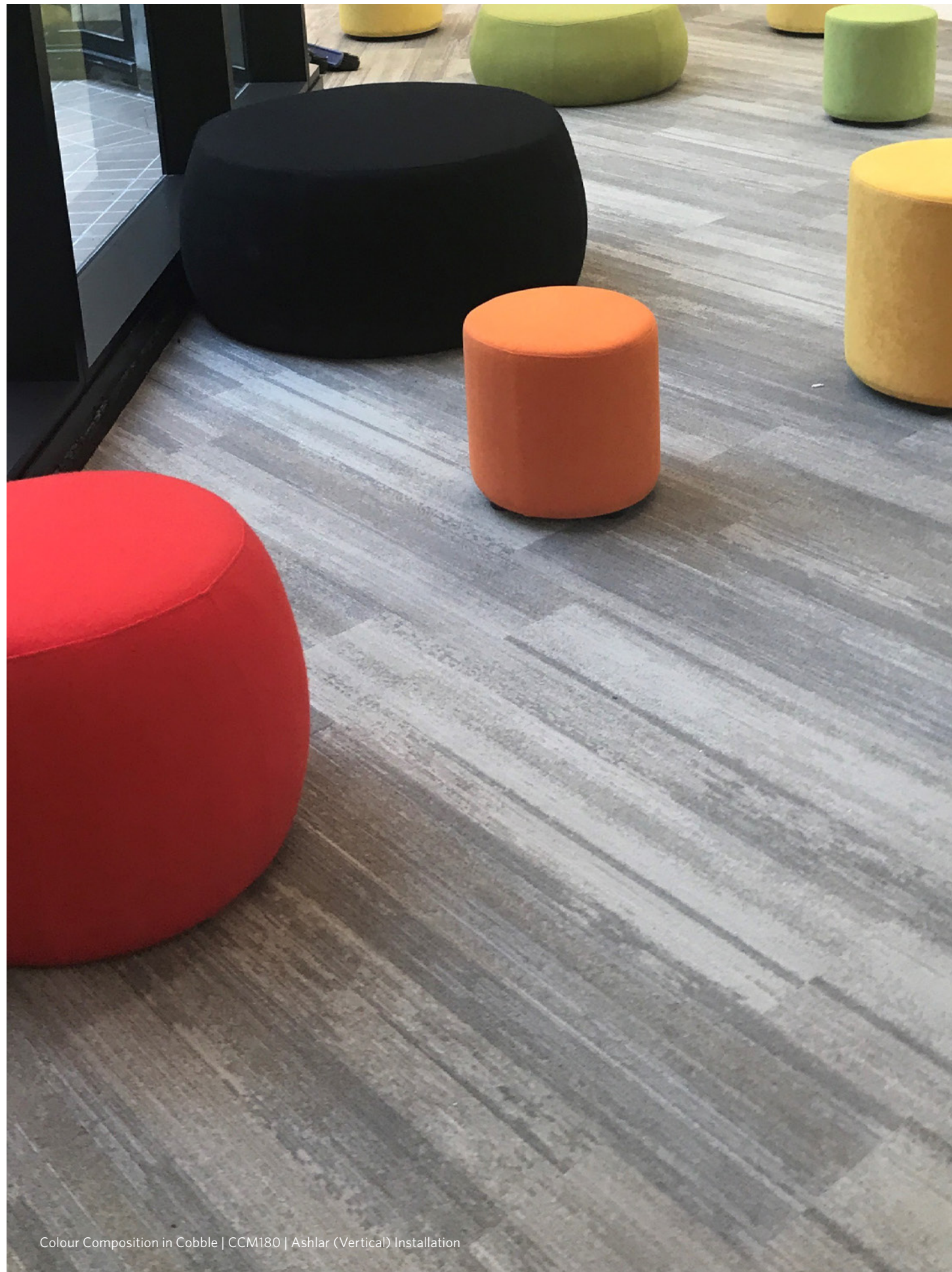
Colour Compositions in Viscosity (CCM128) and  
Tension Viscosity (CCM48-128) | Ashlar (Vertical) Installation



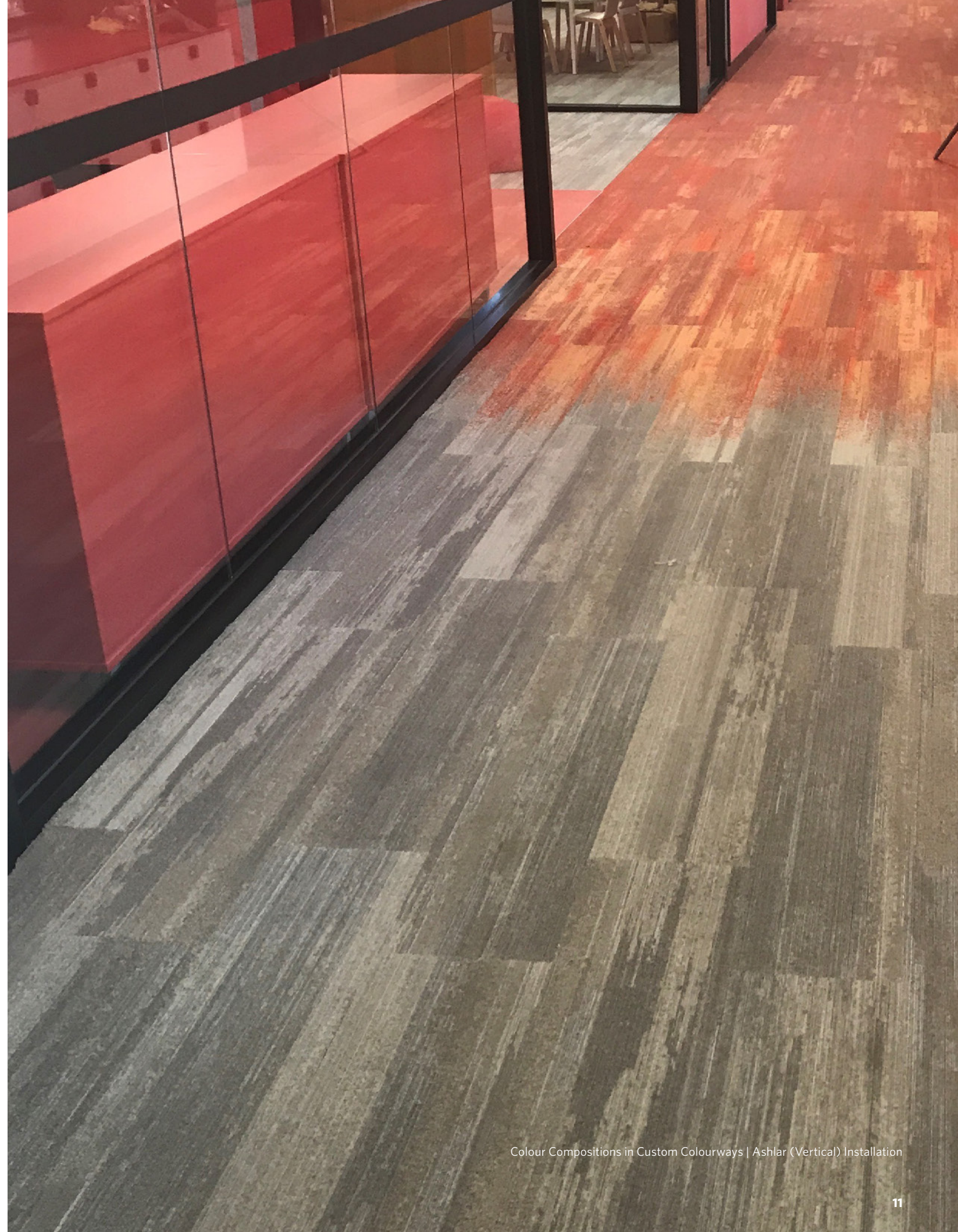
Colour Composition in Sabkha | CCM174 | Ashlar (Vertical) Installation



Colour Composition in Weathering (CCM153), Weathering Delta (CCM153-19) and Delta (CCM19) | Ashlar (Vertical) Installation



Colour Composition in Cobble | CCM180 | Ashlar (Vertical) Installation



Colour Compositions in Custom Colourways | Ashlar (Vertical) Installation



Corrections National Office, Mayfair House, New Zealand | Catalyst | Photographer: Jason Mann  
Colour Compositions in Calcite | CCM125 | Herringbone Installation

# COLOURWAY

## Micro—Crystalline



CCM152  
Micro  
CCM152-105  
Micro Crystalline  
CCM105  
Crystalline

## Tension—Viscosity



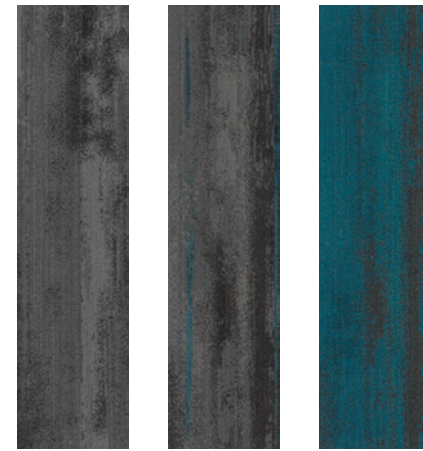
CCM48  
Tension  
CCM48-128  
Tension Viscosity  
CCM128  
Viscosity

## Granite—Crust



CCM5  
Granite  
CCM5-172  
Granite Crust  
CCM172  
Crust

## Intrusion—Calcite



CCM6  
Intrusion  
CCM6-125  
Intrusion Calcite  
CCM125  
Calcite

## Erosion—Glacier



CCM13  
Erosion  
CCM13-157  
Erosion Glacier  
CCM157  
Glacier

## Uplift—Garnet



CCM79  
Uplift  
CCM79-109  
Uplift Garnet  
CCM109  
Garnet

## Abrasion—Hydrolysis



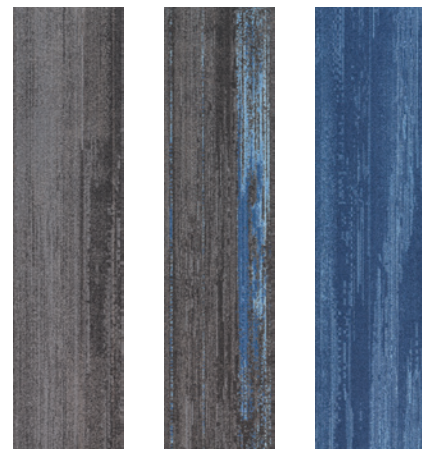
CCM154  
Abrasion  
CCM154-33  
Abrasion Hydrolysis  
CCM33  
Hydrolysis

## Syncline—Eruption



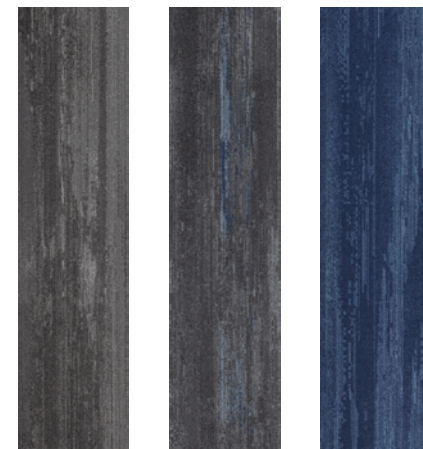
CCM171  
Syncline  
CCM171-169  
Syncline Eruption  
CCM169  
Eruption

## Weathering—Delta



CCM153  
Weathering  
CCM153-19  
Weathering Delta  
CCM19  
Delta

## Sabkha—Marble



CCM174  
Sabkha  
CCM174-73  
Sabkha Marble  
CCM73  
Marble

## Compression—Quartzite



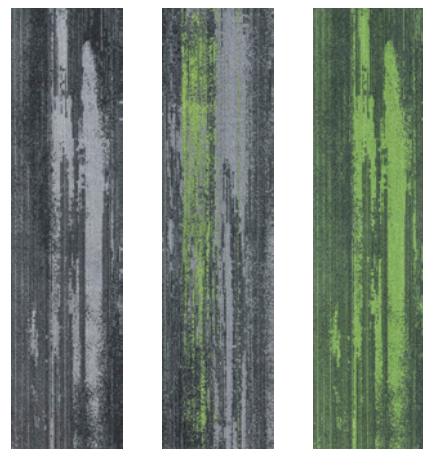
CCM120  
Compression  
CCM120-104  
Compression Quartzite  
CCM104  
Quartzite

## Alkali—Salvation



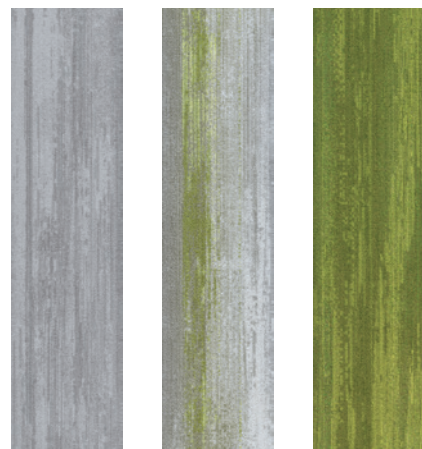
CCM94  
Alkali  
CCM94-151  
Alkali Salvation  
CCM151  
Salvation

## Meander—Estuary



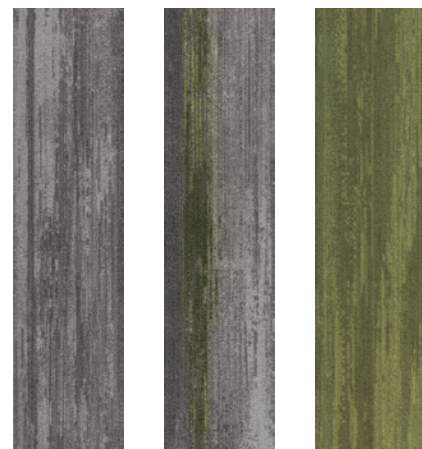
CCM106  
Meander  
CCM106-141  
Meander Estuary  
CCM141  
Estuary

## Cobble—Extrude



CCM180  
Cobble  
CCM180-103  
Cobble Extrude  
CCM103  
Extrude

## Traction—Mudstone



CCM108  
Traction  
CCM108-62  
Traction Mudstone  
CCM62  
Mudstone

## Pyroxene—Chlorite



CCM118  
Pyroxene  
CCM118-162  
Pyroxene Chlorite  
CCM162  
Chlorite



Milliken



## Self-sanitising Carpet

Integrated Infection Control



MGUARD+ treatment kills 99% of the SARS-CoV-2 virus within 2 hours of contact with Milliken PrintWorks™ carpet tiles.

MGUARD+ treatment kills 99% of *S. aureus*, *E. coli*, *K. pneumoniae* in 24 hours as per AATCC 174-2.

Duration of protection varies with use.

Powered by HealthGuard®.

Only available in Australia and New Zealand.

Declare.



# WellBAC®

Milliken WellBAC® open cell foam cushion provides superior durability, appearance retention and cushioning.



Up to 24% greater underfoot comfort for enhanced ergonomics whilst standing.



Up to 50% improved acoustics for quieter, more productive spaces.



Industry leading moisture management with non-reactive backings to enhance the installation process.



3rd party Verified Red-List Free products for occupant and installer well-being.



Enhanced Indoor Air Quality (Low VOC) for improved occupant and installer well-being.

## FACE FABRIC

Patterns and structures made up of nylon yarns with our state of the art tufting technology.

## PRIMARY BACKING

The face yarn is tufted through a high quality non-woven textile. The structure of the textile holds the yarn in place acting as the primary backing.

## PRECOAT

The precoat layer locks the tufted yarns in the primary backing to ensure good tuft bind strength between the yarns and the backing.

## FIBERGLASS

A high quality fiberglass layer is embedded in the polyolefin compound to ensure dimensional stability of the tile.

## SECONDARY BACKING

Proprietary Polyolefin compound layer formulated by Milliken R&D scientists to create a durable and stable tile. Our formulation does not contain PVC or plasticizers.

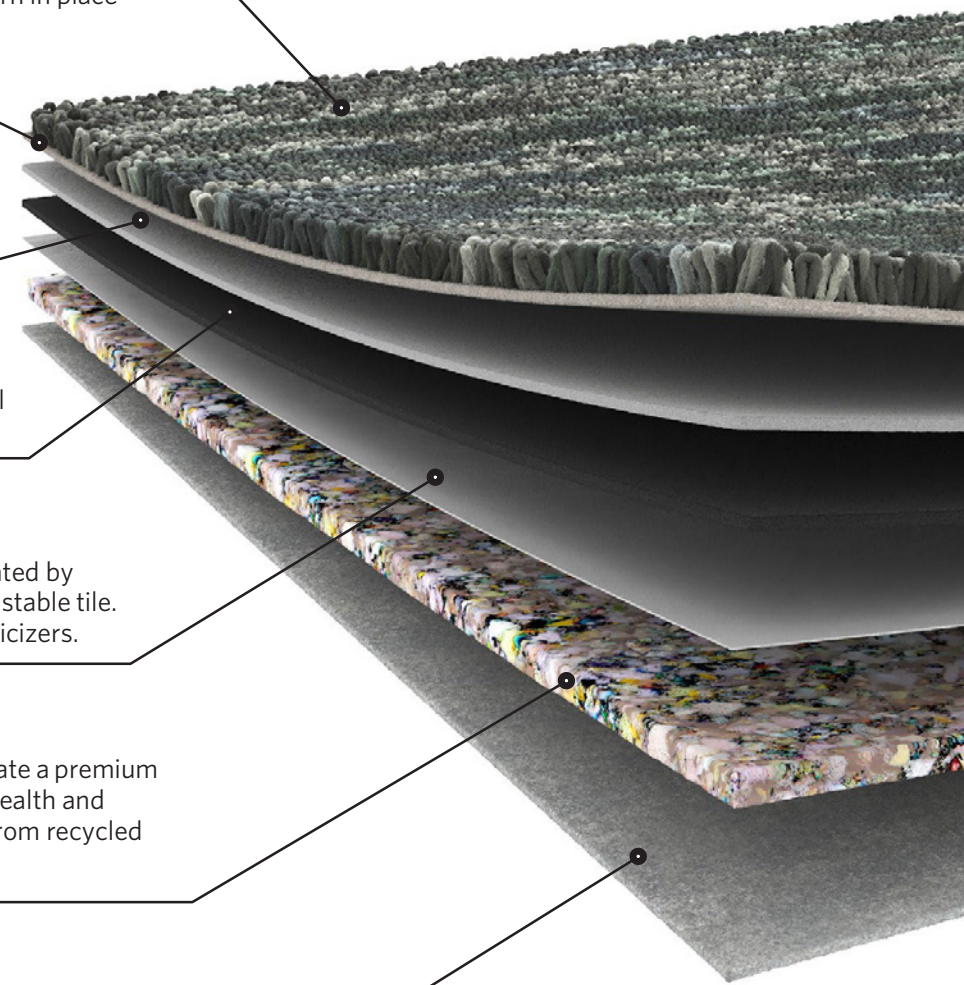
## PREMIUM CUSHION

WellBAC® Comfort and Comfort Plus incorporate a premium cushion layer, designed to provide additional health and wellness benefits. Milliken's cushion is made from recycled polyurethane foam.

## FELT BACK

A protective non-woven textile layer provides a breathable non-reactive finish. It enhances health and wellness.

**Milliken's standard cushion backing system — offering enhanced underfoot comfort, acoustic and wear performance.**



# COLOUR COMPOSITIONS

## SPECIFICATION



When you choose M/PACT™ products, you can be sure your choice is carbon neutral. M/PACT™ carbon neutral products offset the raw materials and manufacturing carbon footprint\* by using 3rd party Verified Carbon Standard Credits that support renewable energy and carbon reduction technologies to help fight climate change. \*as calculated and verified through a ISO14025/ISO14040 compliant LCA and published in third party EPD.

Standard Backing	Cushion Backing WellBAC® Comfort (PVC FREE) (Non-Reactive Cushion Backing)
Acoustic Value	Noise Reduction Coefficient - NRC ≥ 0.25 Impact Sound Pressure Level - Ln,w ≤ 47dB
Concrete Slab Moisture Mitigation	Site-Related Solutions (SRS). Milliken Cushion backed tile + Non-Reactive Standard adhesive means installation 60 days after a new concrete pour, fully warranted no moisture testing required. Refer millikenfloors.com.au
Antiviral   Antibacterial	MGUARD+ Antiviral and Antibacterial Treatment. Further information refer to millikenfloors.com.au

Construction	Tufted, Textured Loop	Lightfastness (AATCC16E)	≥ 4.0 at 80 Hours
Tile Size	25cm x 100cm	Static Electricity	≤ 3.5KV
Yarn Type	Milliken Certified 100% Nylon	(AATCC-134) 20% R.H., 70°F	
Stain Resist   Soil Release	StainSmart®	Indoor Air Quality	≤ 0.5mg/m³ (GLP0793)
Dye Method	PrintWorks™	CRI Green Label Plus™	
Gauge	1/12	VOC	Pass (ISO 10580:2010)
Stitches Per Inch	11.2	ACCS Grading	CEHD 4*, REHD2 6*, Suitable for Stairs
Tufts	134./in² (2,081/100cm²)	Environmental	ECS Grading - Level 4 (Certificate No. 20166)
Recyclable	100%		Declare - 3rd Party Verified RED LIST FREE Cradle to Cradle - Silver Carbon Neutral Environmental Product Declaration (EPD) Health Product Declaration (HPD)
Nominal Total Thickness	8.2mm		
Nominal Total Weight	92.9 oz./yd² (3,150g/m²)		
Nominal Pile Thickness	2.1mm		
Flammability (Radiant Panel Test)	CHF/CRF = 5.2kW/m², Smoke value = 182%.min		

Recommended Installation Method(s)	Ashlar (Vertical)   Herringbone
Recommended Area of Use	Commercial Extra Heavy Duty
Warranties	15-year Wear Warranty 15-year Dimensional Stability Warranty 15-year Anti-Static Warranty 15-year Castor Chair Wear Warranty



Alliance  
Founding  
Member



Milliken

Corrections National Office, Mayfair House, New Zealand |  
Catalyst | Photographer: Jason Mann  
Colour Compositions in Calcite | CCM125 |  
Herringbone Installation

Australia:  
Toll Free: 1800 668 372  
New Zealand:  
Toll Free: 0800 668 372  
www.millikenfloors.com.au  
(Australia & New Zealand)

This WellBAC® cushion-back carpet tile product is covered by one or more patents, published applications and/ or patents pending. Specifications are subject to normal manufacturing tolerances and may be changed without prior notice. Copies of actual test results are available upon request.

© 2022 Milliken & Company | Design © Milliken & Company