

103



SIX PACK 103

Milliken™



SP3_119-196 and SP3_118-153. Vertical ashlar. (LVT) All Together Now, Gather in Social Space. Random.

SIX PACK 103

A modern interpretation of the classic plaid design.

An understated crosshatch effect is enhanced with pops of color.



Scan to explore
the product catalog.



SP3_10-124 and SP3_94-176. Herringbone.



SP3_94-176, SP3_10-124 and SP3_58-166. Vertical ashlar.



SP3_94-176, SP3_10-124 and SP3_58-166. Vertical ashlar.

PRINTWORKS™

With our innovative precision dye technology, our PrintWorks™ capabilities bring detailed artistic visions to life. Take advantage of PrintWorks™ ultimate color flexibility and unique patterning in precise registration and see what's possible in the new age of carpet design.

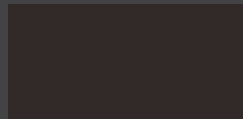
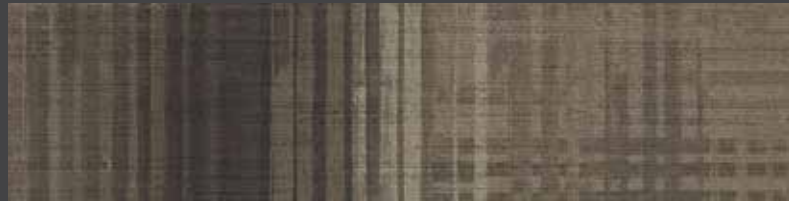


SP3_119-196 and SP3_118-153. Vertical ashlar. (LVT) All Together Now, Gather in Social Space. Random.

MODIFIED STANDARD

You can easily modify the colors in any of the Six Pack patterns.

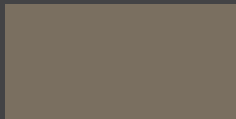
- 1 Simply choose the color you want to change and replace with your color of choice. Each letter represents one color in the design.
- 2 You can use almost anything to reference for the colors you want to change (color reference tools, paint chips, other Milliken products, etc.)
- 3 Reach out to your Milliken Flooring representative to request a sample.



A



B



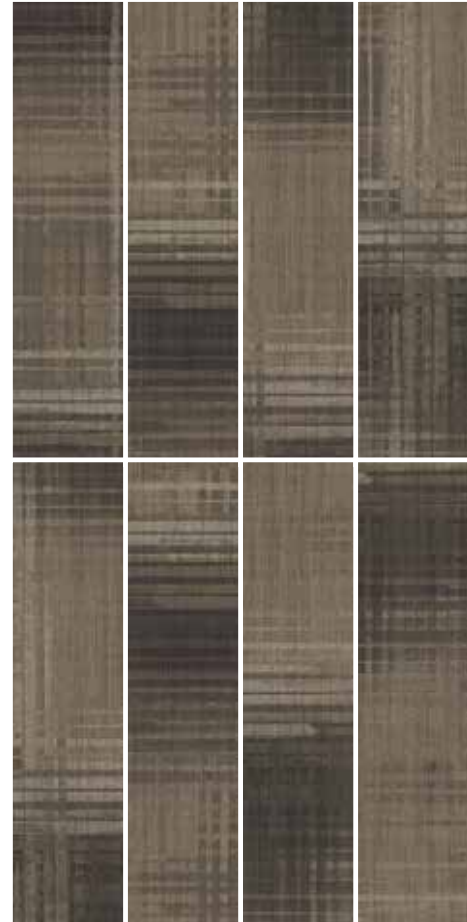
C



SP3_10-124 and SP3_94-176. Herringbone.



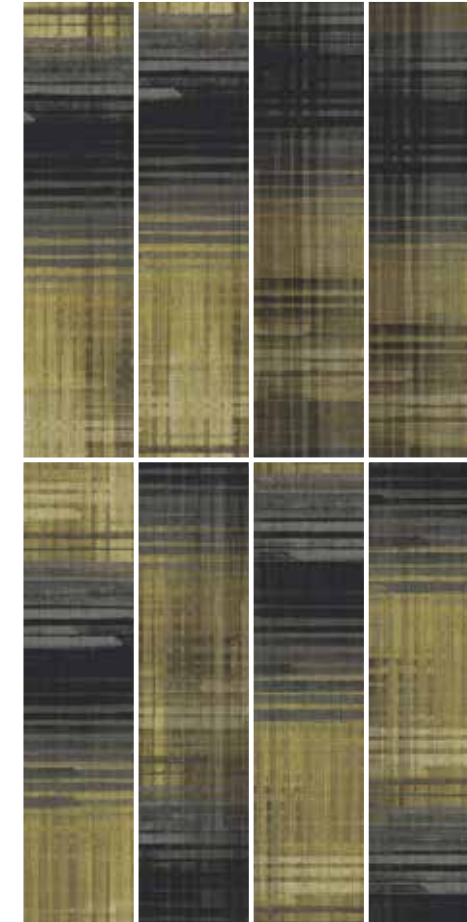
SP3_118-153 25 cm x 1 m planks



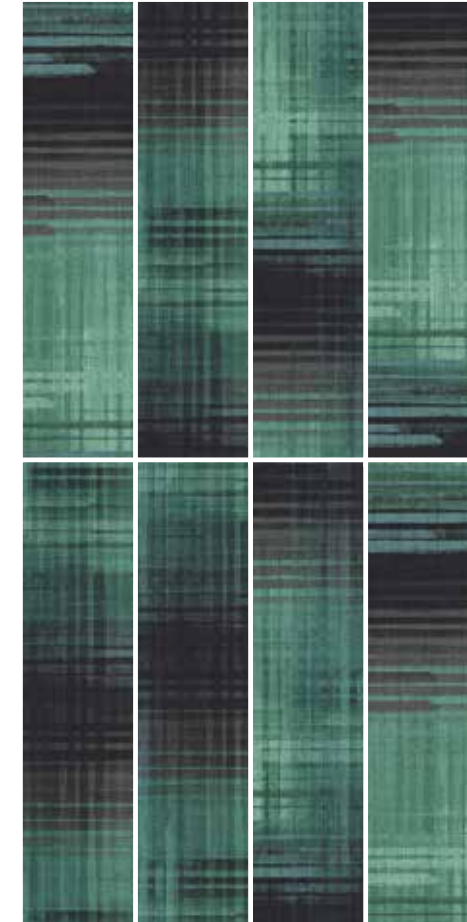
SP3_94-176 25 cm x 1 m planks



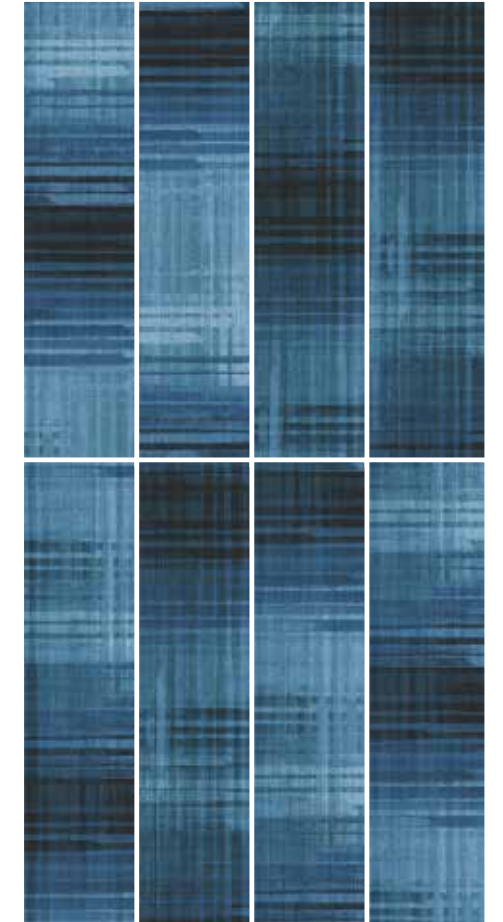
SP3_10-124 25 cm x 1 m planks



SP3_58-166 25 cm x 1 m planks



SP3_119-162 25 cm x 1 m planks



SP3_119-196 25 cm x 1 m planks



SP3_58-166, SP3_94-176 and SP3_10-124. Vertical ashlar.

Milliken™ FOR HUMANKIND.



Scan to learn more about our
commitment to sustainability.

RED LIST FREE

Healthy materials are the foundation for effective circularity, reducing community pollution and cleaner living for all.

- The Living Building Challenge Red List contains the “worst in class” materials, chemicals and elements known to pose serious risks to human health and the greater ecosystem.
- Red List Free certification is the absence of Red List chemicals in building and home furnishings.
- Our products have been completely vetted and verified to contain no Red List Chemicals at levels at or above 100 ppm or 0.01 percent.
- Affords superior recycling potential of clean-based products.

Achieving LBC Red List Free is a commitment to significantly cut down on the output and use of harmful chemicals. It reflects our company’s prioritization on human health and ensuring a brighter future for generations to come.

M/PACT™ Carbon Neutral Product

Climate change is one of the greatest threats facing humanity. That’s why our flooring products are carbon neutral everywhere in the world. Let’s work together for a better tomorrow.

Sustainable features

Six Pack 103 is manufactured with WellBAC® Comfort cushion backing, and is certified NSF-140 Gold with 39.3% pre-consumer recycled content by total weight. **Six Pack 103** is also available with our NSF-140 Platinum backing option. All Milliken modular carpets carry Environmental Product Declarations and Health Product Declarations, which contribute to LEED certification. Additionally, Milliken modular carpets carry Declare® transparency labels and comply with the Red List Imperative of the Living Building Challenge.™



Declare.



SIX PACK 103

Construction

Tufted, Textured Loop

Plank Size

25 cm x 1 m (9.84" x 39.4")

Yarn Type

Milliken-Certified WearOn® Nylon

Stain Resist / Soil Release

StainSmart®

Finished Pile Height

0.13" (3.30 mm)

Finished Pile Thickness

0.08" (2.03 mm)

Average Density (Finished)

6,541

Standard Backing

PVC-Free WellBAC® Comfort Cushion

Available with TractionBack®

Texture Appearance Retention Rating (TARR)

Severe Traffic End-Use Applications

Recommended Installation Methods

Planks: All Plank Methods



ALL PLANK
METHODS

TRACTIONBACK

Simplify your modular installation with Milliken's patented TractionBack®, an innovative backing system that is faster, more cost efficient, and environmentally superior to wet adhesives and peel-and-stick carpet tile.

SHOWN ON THE COVER

(Front) SP3_119-196 and SP3_118-153. Vertical ashlar.

(Back) SP3_10-124 and SP3_94-176. Herringbone.

Images in this brochure are approximate for color and pattern scale. Please use actual carpet samples to make your final selections.



Scan to watch
product video.

Milliken™

Customer Concierge 800.824.2246 | millikenfloors.com

© 2023 Milliken & Company | Design © Milliken & Company | Made in the USA

2710035420

BG 0523