



**OBEX™**

Milliken  
**Entrance Flooring**

**GRID**

*Milliken*



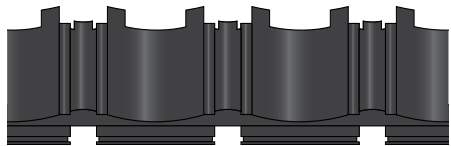


# OBEX™ Grid

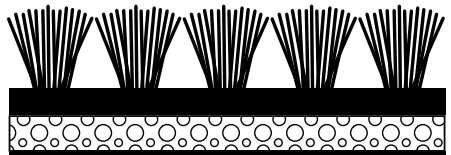
Designed especially for high-traffic areas, OBEX™ Grids provide lasting protection. Available in both open and closed constructions, Grids efficiently capture dirt and moisture from foot and rolled traffic entering the building. Grids are constructed with durable, easy-to-clean vinyl, and allow for OBEX material inserts. A click-on edge system is included for surface-mounted applications.

ZONE 1 | ZONE 2

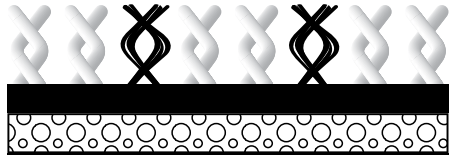
MATERIALS



Vinyl (Z1, Z2)



Mono (Z1, Z2)

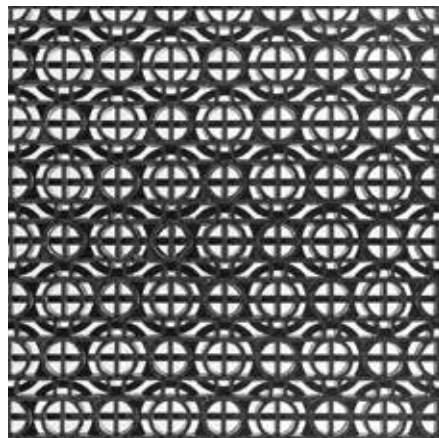


CutX (Z2)

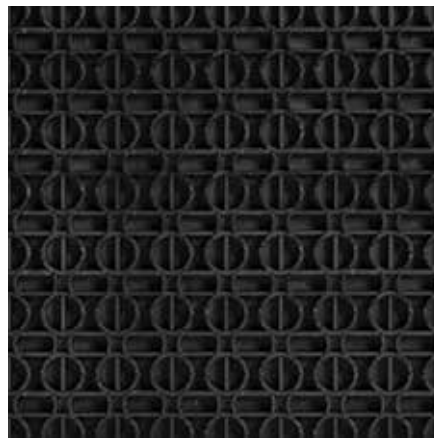




OBEX™ Vinyl (11 mm) | Z1, Z2

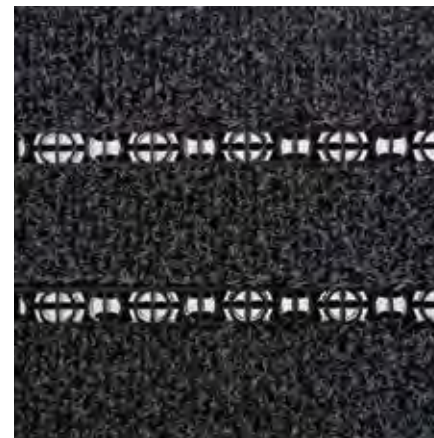


Open



Closed

OBEX™ Mono (11 mm) | Z1, Z2



Open



Closed





▶ Z1: Grid / Vinyl / Open  
 ▶ Z2: Grid / CutX / Closed / Dark Grey  
 ▶ Z3: Tile / CutX / Fizz / Dark Grey

**OBEX™ CutX** (11 mm, available in Open & Closed) | Z2



Dark Grey



Grey



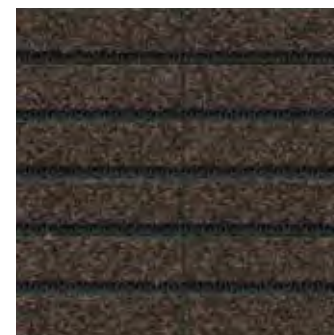
Dark Blue



Blue



Dark Green



Brown



Mocha



Gold





Z1: Grid / Vinyl / Open  
Z2: Grid / CutX / Grey / Closed



# Covering the Zones

## Protection from the Outside In

To determine the most effective OBEX™ solution, our team evaluates your building's entry based on three distinct Zones. This process starts at the outside of the building, and addresses the entire pathway through any airlocks, vestibules, and lobby or reception areas. Because every facility is unique, breaking down these Zones helps define where entrance flooring should be installed, as well as what combinations of Forms and Materials will deliver the best protection and performance.

### ZONE 1 | OUTDOORS

**Location:** Outdoor covered area prior to building's entrance

**Recommendation:** Product with heavy scraping action

**Goal:** Trap grit, heavy dirt particles, and moisture, including snow, salt, and sand

### ZONE 2 | VESTIBULE / AIRLOCK

**Location:** Enclosed entrance of building

**Recommendation:** Dual-action product that combines scraping and absorption

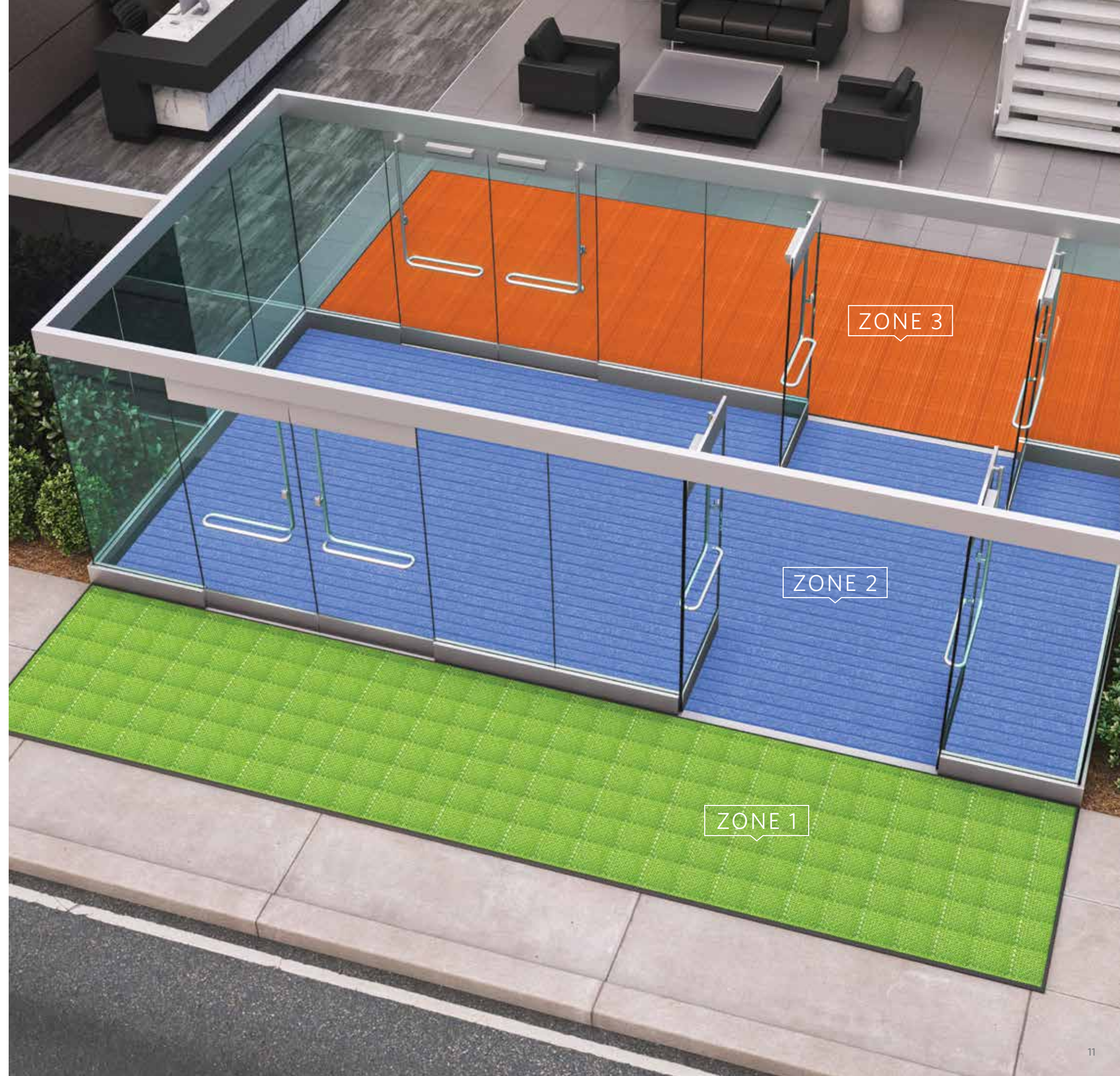
**Goal:** Collect dirt, debris, and moisture

### ZONE 3 | INDOORS

**Location:** Primary area(s) inside building

**Recommendation:** Product with high absorption qualities

**Goal:** Remove remaining moisture and small particles







# OBEX™ Edge

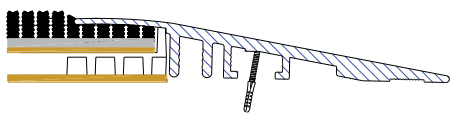
When installing a surface mount installation of OBEX Grid the use of a Vinyl or Aluminum edge option is available. Providing a simple transition when using the interlocking grid system. OBEX Grids make on-site installation simple, connecting together to cover any sized space.

ZONE 1 | ZONE 2

MATERIALS



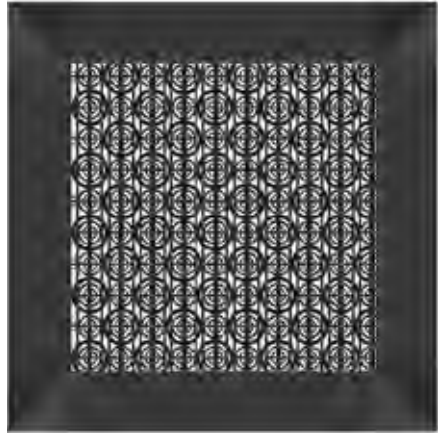
Vinyl (Z1, Z2)



Aluminium (Z1, Z2)

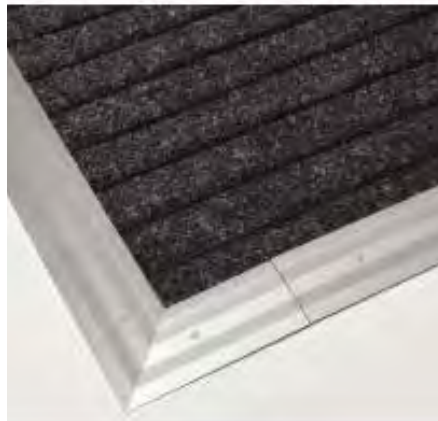


**OBEX™ Vinyl | Z1, Z2**



The OBEX Vinyl Edge Kits come in boxes of 20 Female, 20 Male and 6 Corner pieces. These connect directly onto the OBEX Grids in 11mm thickness, for ease of installation.

**OBEX™ Aluminium | Z1, Z2**



The OBEX Aluminum Edge is offered by the box and consist of 10 pieces that measure 8.86 feet each.





Milliken's integrated OBEX™ system of Forms and Materials optimizes safety, wellness, and design from the outside in.

