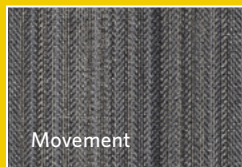
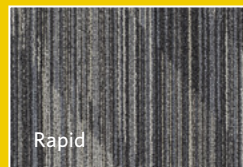


# MOTIONSCAPE

Movement / Rapid / Rush



Movement



Rapid



Rush



Milliken™



*Movement*



*Rapid*



*Rush*

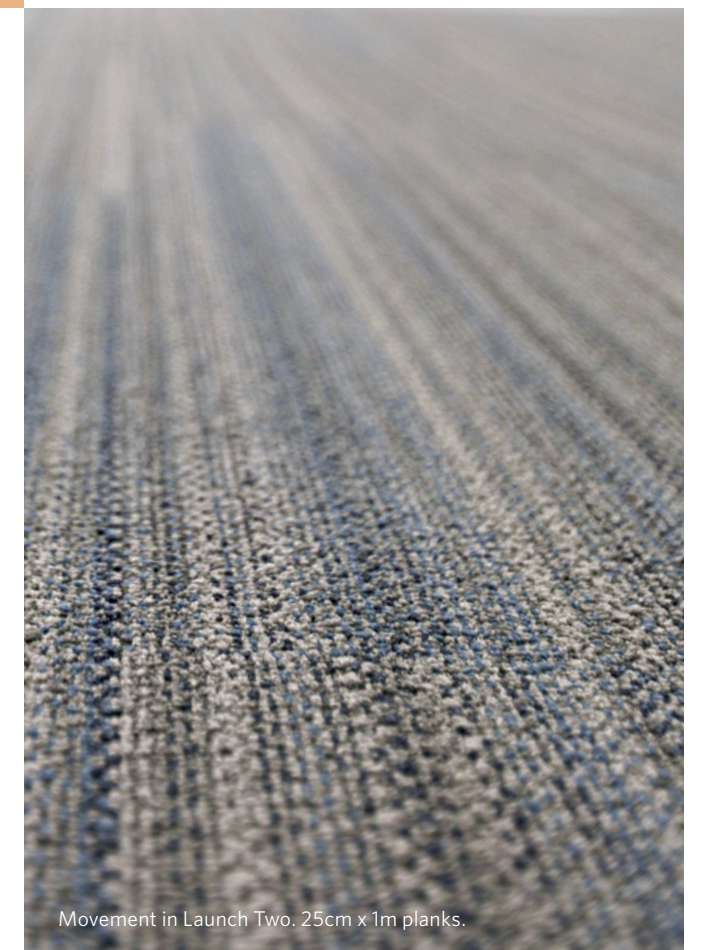


## MotionScape

Move through your space at your desired pace.

Introducing MotionScape.  
With 3 gradually progressive  
patterns offered in a total of  
24 unique palette options, the  
intensity is entirely up to you.

Select the discreetness of  
Movement, the fluidity of Rapid,  
or the vibrancy of Rush.



Movement in Launch Two. 25cm x 1m planks.



## Color in motion.

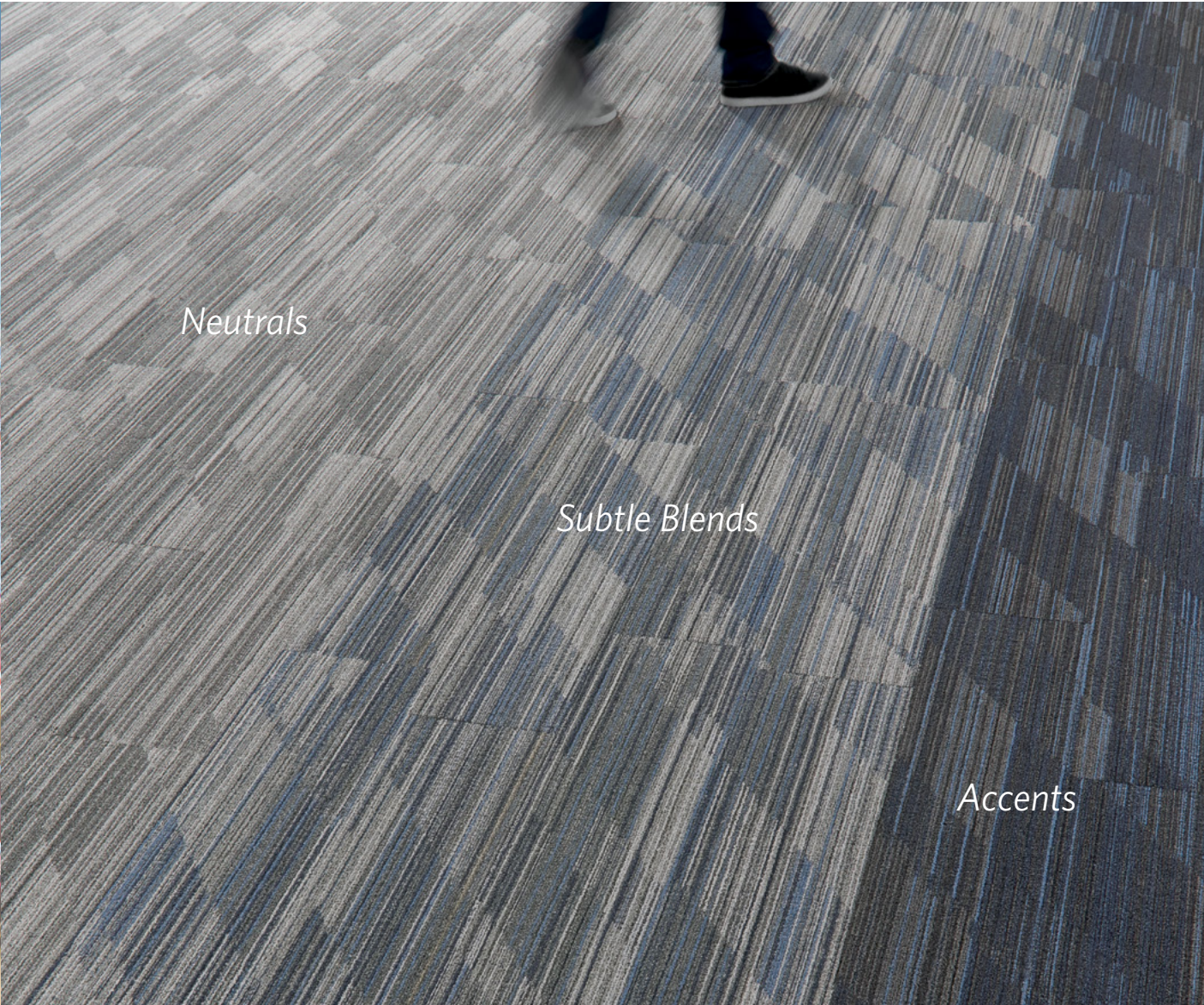
Choose your look and feel using neutrals, subtle blends, or concentrated accents. Customize with one of 8 varying color groups to create an energetic and brilliantly exclusive space.



*Neutrals*

*Subtle Blends*

*Accents*





Rush in Flash Two.





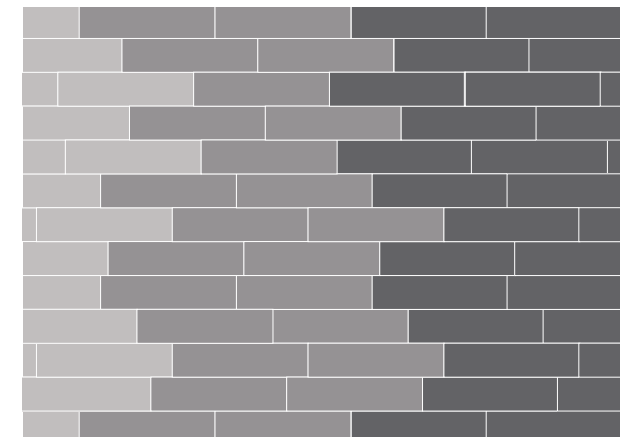


PATTERN KEY

*Movement*

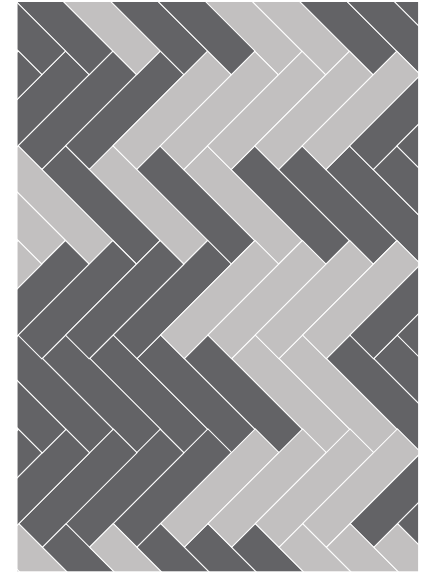
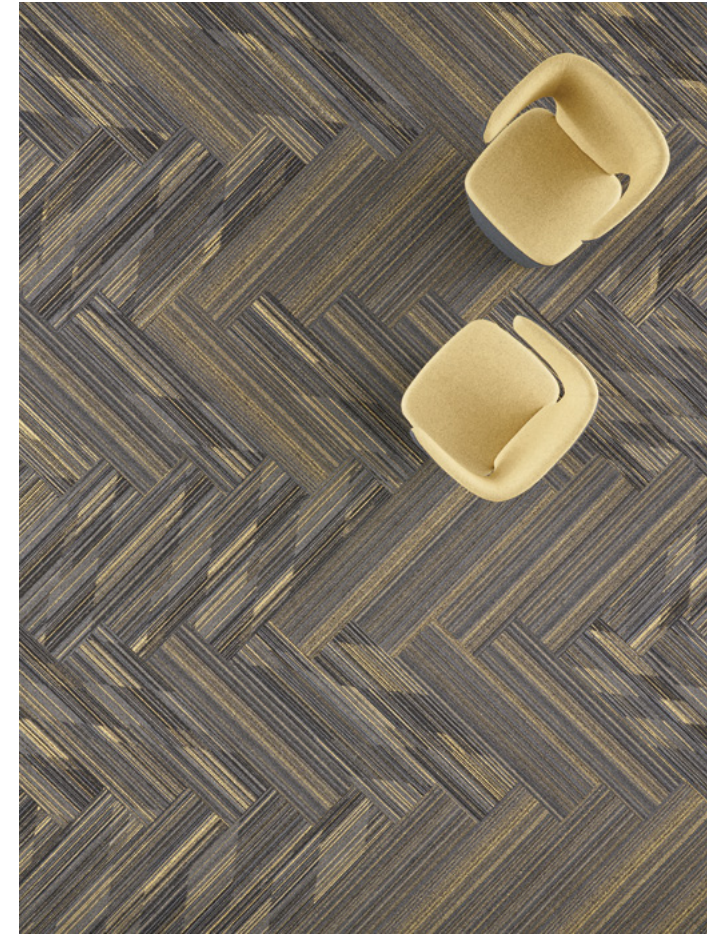
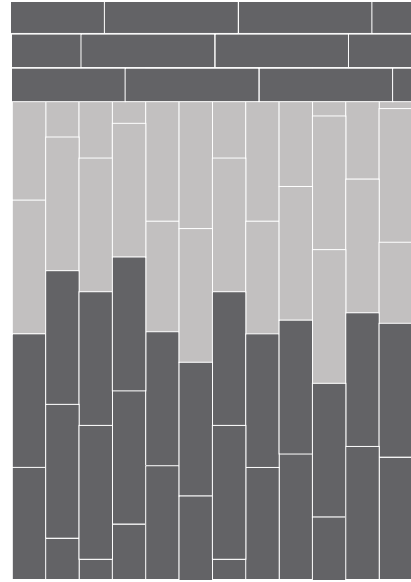
*Rapid*

*Rush*



Get inspired and explore the infinite movement of MotionScape with these unique installations. Experiment with your own floorscape on the Milliken Visualizer.

Visit the [MillikenFloors.com/Visualizer](https://www.MillikenFloors.com/Visualizer)

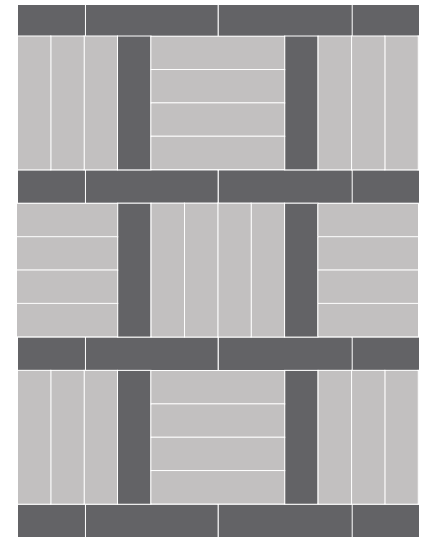
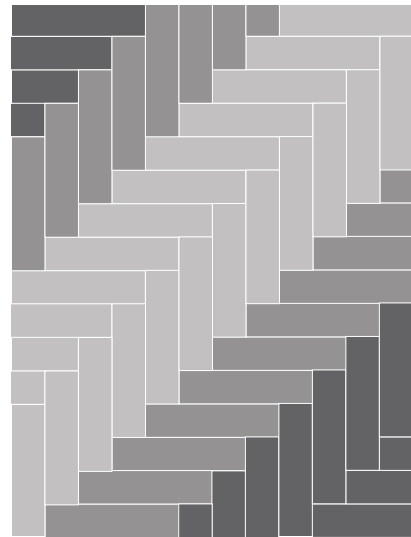


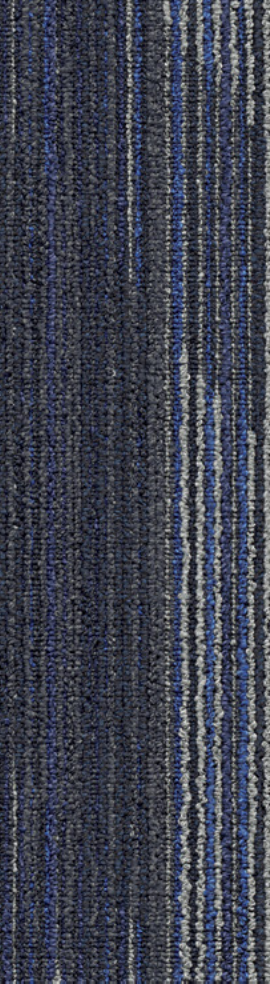
PATTERN KEY

Movement

Rapid

Rush



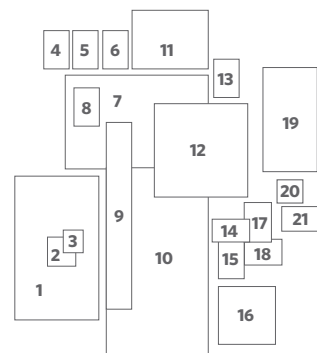


## MotionScape, created around a family of Milliken coordinating colors

MotionScape and creativity go hand in hand. With over 24 colors it's easy to be inspired to coordinate with other Milliken collections.

For our full color palettes visit:  
[MillikenFloors.com/colors](http://MillikenFloors.com/colors)

Rush in Launch Three.



- 1 MotionScape, Rapid in Launch Three
- 2 Elevation, True North in Delta
- 3 Remix Remastered, Mix Tape in Denim
- 4 Whale Song, Beluga in Deep Sea
- 5 Surface Study, Washed in Eddy
- 6 Ghost Artist, Facade in Ensconce
- 7 MotionScape, Rush in Launch Two
- 8 District LVT, Midtown Village in Society Hill
- 9 Moraine, Relief in Stratum
- 10 Moraine, Explorer in Elevate with Navy
- 11 Formwork in Sapphire
- 12 Color Field in Oil Blue
- 13 Whale Song, Beluga in Coastline
- 14 Lineation, Triangular Path in Harbor Grey
- 15 Journal, Inscription in Inkling with Cyan and Matcha Accents
- 16 Lapidus, Mantle in Spinel
- 17 Arctic Survey, Isotherm in Polar Night
- 18 Sound and Fury, Gesture in Spectrum
- 19 Journal, Freehand in Scroll with Lead and Graphite Accents
- 20 Lapidus, Core in Spinel
- 21 Whale Song, Beluga in Night Tide







Rapid in Swift One.

The designs from MotionScape pair perfectly with coordinating styles found in our LVT collections.



Movement in Drive Two. 25cm x 1m planks. Vertical ashlar.

Color line  
shown in  
Movement

*Neutrals*  
ONE



MOV152-25  
LAUNCH ONE  
(RAP152-25, RUS152-25)



MOV171-107  
ALIVE ONE  
(RAP171-107, RUS171-107)



MOV79-153  
FLASH ONE  
(RAP79-153, RUS79-153)



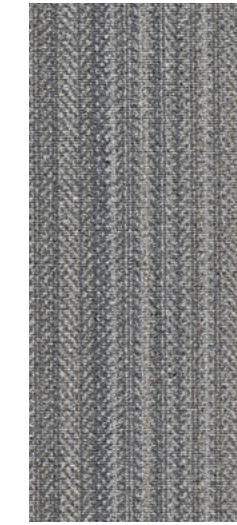
MOV133-122  
PACE ONE  
(RAP133-122, RUS133-122)



MOV251-153  
DRIVE ONE  
(RAP251-153, RUS251-153)



MOV67-59  
EMERGENCE ONE  
(RAP67-59, RUS67-59)



MOV124-108  
PROPEL ONE  
(RAP124-108, RUS124-108)



MOV94-108  
SWIFT ONE  
(RAP94-108, RUS94-108)

*Subtle Blends*  
TWO



MOV25-126  
LAUNCH TWO  
(RAP25-126, RUS25-126)



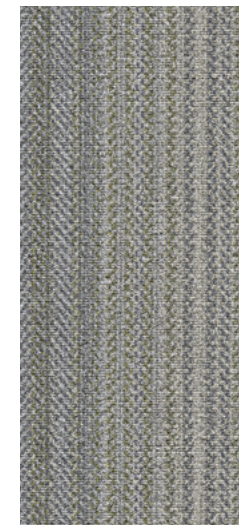
MOV107-52  
ALIVE TWO  
(RAP107-52, RUS107-52)



MOV27-108  
FLASH TWO  
(RAP27-108, RUS27-108)



MOV94-118  
PACE TWO  
(RAP94-118, RUS94-118)



MOV153-152  
DRIVE TWO  
(RAP153-152, RUS153-152)



MOV67-45  
EMERGENCE TWO  
(RAP67-45, RUS67-45)

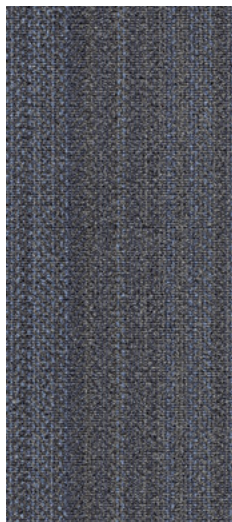


MOV124-214  
PROPEL TWO  
(RAP124-214, RUS124-214)

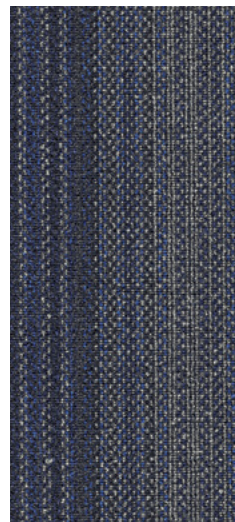


MOV94-79  
SWIFT TWO  
(RAP94-79, RUS94-79)

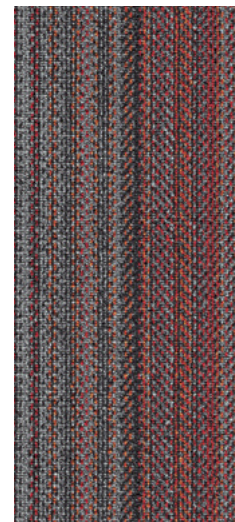
*Accents*  
THREE



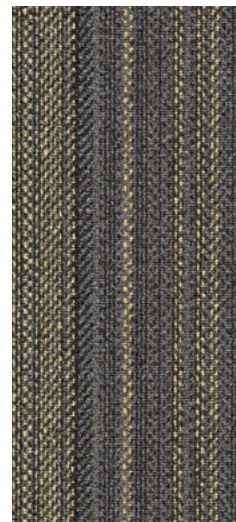
MOV52-126  
LAUNCH THREE  
(RAP52-126, RUS52-126)



MOV26-228  
ALIVE THREE  
(RAP26-228, RUS26-228)



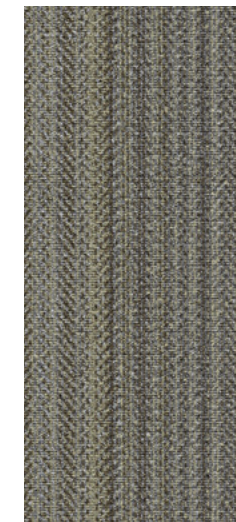
MOV108-102  
FLASH THREE  
(RAP108-102, RUS108-102)



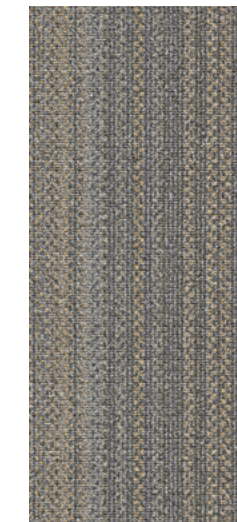
MOV119-188  
PACE THREE  
(RAP119-188, RUS119-188)



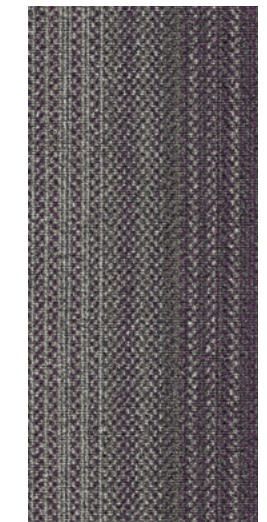
MOV88-21  
DRIVE THREE  
(RAP88-21, RUS88-21)



MOV67-88  
EMERGENCE THREE  
(RAP67-88, RUS67-88)



MOV124-154  
PROPEL THREE  
(RAP124-154, RUS124-154)



MOV94-66  
SWIFT THREE  
(RAP94-66, RUS94-66)



## Style Backed by Performance

Milliken Floor Covering offers products and expertise in all areas of your commercial spaces, including high-performance entryway systems, modular and broadloom carpet, luxury vinyl tile and milliCare®. Simplify your flooring projects by working with a trusted partner that lets you focus on enjoying the process of creating a great space.



## Complete Performance and Support

### ENTRYWAY SYSTEMS

The OBEX® brand of products offers highly effective, comprehensive modular entry solutions designed as a three-zone barrier system to prevent dirt and moisture from entering the building. Available in coordinated colors and patterns, OBEX entry products are engineered to increase the functionality of a building's entrance without forsaking elements of design or aesthetic.

### MODULAR CARPET AND BROADLOOM

Milliken's broadloom and carpet tile incorporate the latest innovations in tufting and dyeing technology, achieving unique looks and excellent performance. All carpet tile products have cushion backing for an extended lifespan, as well as ergonomic and environmental benefits.

### LUXURY VINYL TILE

From natural looks of wood and stone to more modern textures and abstracts, Milliken's collection of Luxury Vinyl Tile flooring creates new options for a commercial or hospitality interior. Our simple-to-search Color Reference system provides easy coordination of the LVT options to modular and broadloom carpets.

### MILLICARE®

milliCare takes caring for your flooring and textiles off your to-do list, which means you can skip right to the part where you get to lean back, put your hands behind your head, and be a hero for keeping a beautifully cleaned space.



#### WARRANTY

Our products are backed by lifetime commercial warranties that ensure quality and give peace of mind. Milliken stands behind its products in the areas of Face Fiber Wear, Staining/Soiling Resistance, Color Pattern Permanency, Delamination of Backing, Edge Ravel, Tuft Bind, Floor Compatibility, Antistatic, Flammability, Cushion Resiliency, Dimensional Stability, Floor Release, TractionBack and Moisture Resistance.

» [millikenfloors.com/warranty](http://millikenfloors.com/warranty)



#### SUSTAINABILITY

Core to our culture, we embrace sustainability with practices such as third party voluntary product labeling and certifications, zero waste to landfill since 1992, use of renewable energy, product lifecycle assessments, ISO 9000 quality standards and all of our manufacturing sites are certified to the highest global environmental standard - ISO 14001.

» [millikenfloors.com/sustainability](http://millikenfloors.com/sustainability)



#### STAINSMART®

StainSmart, a proprietary treatment applied to Milliken carpets designed to repel and protect against stains and enhance soil release.

» [millikenfloors.com/stainmart](http://millikenfloors.com/stainmart)



#### MOISTURE MANAGEMENT

Milliken modular carpet is a moisture mitigation solution all by itself. Unlike with hardback products, water vapor has a way to escape from beneath Milliken's cushion backing. It travels freely through our open-cell cushion, evaporating naturally through seams at the edges of each carpet tile. All modular carpet tiles come with a lifetime warranty against adhesive breakdown due to moisture vapor emissions.

» [millikenfloors.com/moisture](http://millikenfloors.com/moisture)



#### CUSHION BACKING

Provides superior underfoot comfort while improving the carpet's durability and offering ergonomic, acoustic and environmental benefits.

» [millikenfloors.com/cushion](http://millikenfloors.com/cushion)



#### SIT TO STAND

Avoid the hassle and expense of using anti-fatigue mats under sit-to-stand workstations. Milliken cushion backed carpet tiles have ergonomics built directly into the carpet tiles themselves.

» [millikenfloors.com/sit2stand](http://millikenfloors.com/sit2stand)



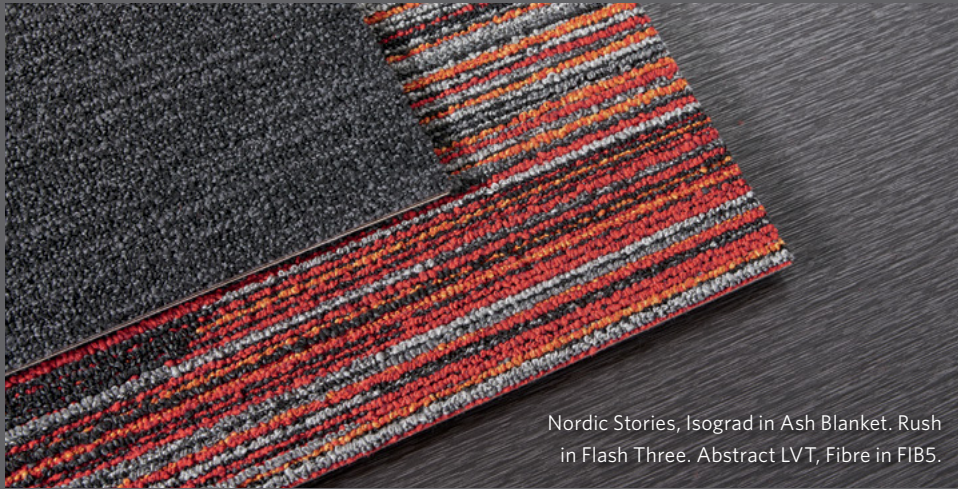
#### TRACTIONBACK®

Our bio-based, high-friction coating keeps carpet tiles securely in place without additional adhesives, eliminating the need to prime or seal the floor and reducing installation time and costs.

» [millikenfloors.com/tractionback](http://millikenfloors.com/tractionback)

# MOTIONSCAPE

Movement / Rapid / Rush



Nordic Stories, Isograd in Ash Blanket. Rush in Flash Three. Abstract LVT, Fibre in FIB5.

## PLAYS WELL WITH OTHERS

The unique gradations and intensities of MotionScape can seamlessly integrate with selections from other Milliken collections. Try the texturally inspired Nordic Stories collection or the Abstract LVT collection to create a coordinated finish.

## SUSTAINABLE FEATURES OF THIS PRODUCT

**MotionScape** is manufactured with Underscore® ES (Environmentally Sustainable) cushion backing, and is certified NSF-140 Gold with 41.5% pre-consumer recycled content by total product weight. With our optional Underscore® ESP cushion backing, **MotionScape** carries an NSF-140 Platinum certification. All Milliken modular carpets carry Environmental Product Declarations and Health Product Declarations, which contribute to LEED certification. Additionally, Milliken modular carpets carry Declare® transparency labels and comply with the Red List Imperative of the Living Building Challenge.™

### Construction

Tufted, Textured Loop

### Tile Size

25 cm x 1 m (9.85" x 39.4")

### Yarn Type

Universal Fibers® Solution-Dyed  
Nylon Type 6,6

### Stain Repel & Resist / Soil Release

StainSmart®

### Tufted Face Weight

20 oz/yd<sup>2</sup> (678 g/m<sup>2</sup>)

### Finished Pile Height

*Movement*: 0.10" (2.54 mm)

*Rapid, Rush*: 0.14" (3.56 mm)

### Finished Pile Thickness

*Movement*: 0.077" (1.96 mm)

*Rapid*: 0.096" (2.44 mm)

*Rush*: 0.094" (2.39 mm)

### Average Density (Finished)

*Movement*: 8,763

*Rapid*: 7,008

*Rush*: 7,094

### Standard Backing

PVC-Free Underscore® ES Cushion  
Available with TractionBack®

### Texture Appearance Retention Rating (TARR)

Severe Traffic End-Use Applications

### Recommended Installation Methods



ALL PLANK  
METHODS



**Declare.**



## Growing greener for over 100 years.

This product has a UL® Environment 3<sup>rd</sup> party verified Environmental Product Declaration (EPD). A copy of the EPD is available online at [millikencarpet.com/epd](http://millikencarpet.com/epd) and [productguide.ulenvironment.com](http://productguide.ulenvironment.com).

This cushion-back carpet tile product is covered by one or more patents, published applications and/or patents pending. Specifications are subject to normal manufacturing tolerances and may be changed without prior notice. Images in this brochure are approximate for color and pattern scale. Please use actual carpet samples to make your final selections.