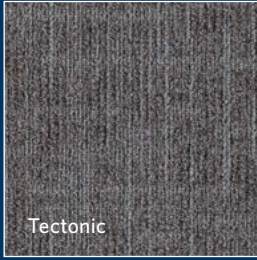
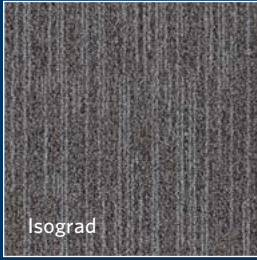


# NORDIC STORIES

Isograd / Tectonic / Hidden Plains



Milliken®





## INSPIRED. INSPIRING.

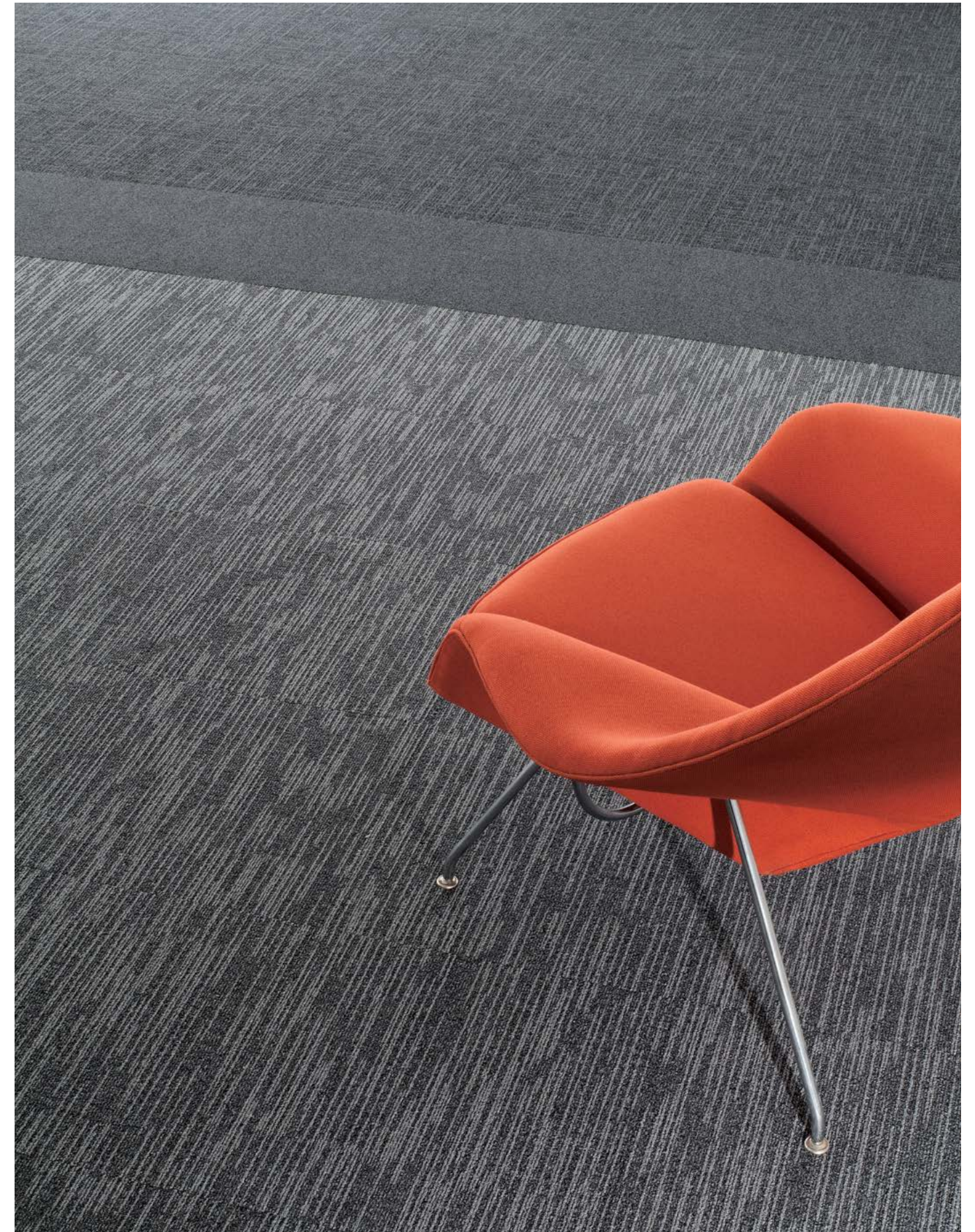
### 源于灵感 智启灵感

Our travels have taken us to extreme environments: the surreal contrasts of Iceland, a country powered by nature and made up of sulphurous plains, salt terraces and geothermal pools. This is geological drama at its best, a place where isolation and dark winters create the backdrop to a unique breed of creativity. In contrast the gentle landscape of Denmark. A country peppered with archipelagos and lush forests and home of 21<sup>st</sup> Century design, where form and function meet utopian ideology.

Nordic Stories is inspired by the textural landscape, geological extremes, folklore and modern culture of the Northern Hemisphere. Muted natural tones, black volcanic rock, deep blue lakes, rich golden moss, graphic landforms and bold architecture. This Collection represents the sensory experience that is the Nordics, a series of diverse countries with distinct identities that have collectively helped to define contemporary design culture.



Isograd in Esker, monolithic installation

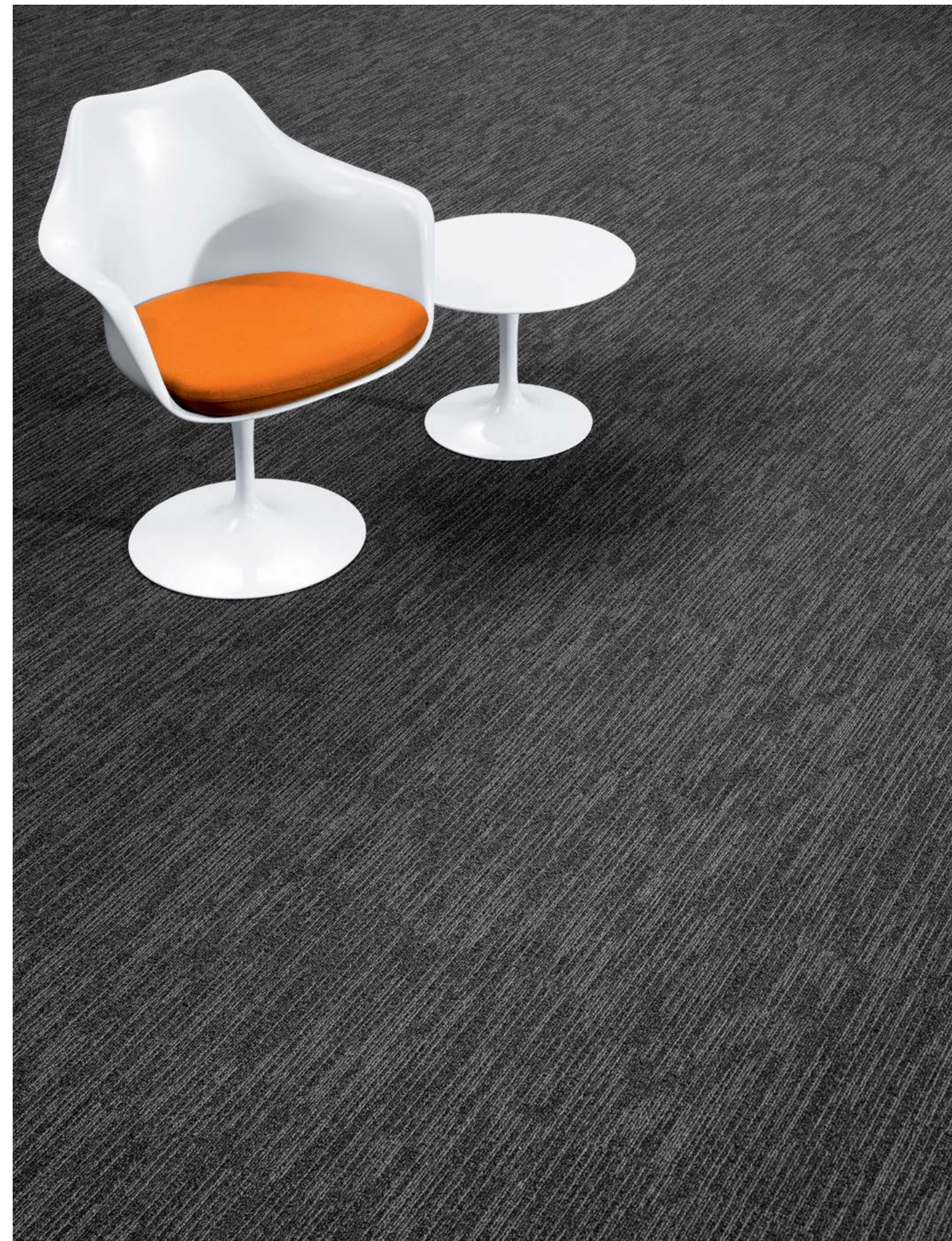


(top to bottom) Tectonic in Ash Blanket, Formwork 2.0 in Gable and Isograd in Esker, monolithic installation





Tectonic in Ash Blanket, monolithic installation



Isograd in Flume, monolithic installation



Hidden Plains in Spiritland, monolithic installation



Hidden Plains in Lahar, monolithic installation



Tectonic in Lahar, monolithic installation



Isograd in Lahar, monolithic installation

# COLORLINE



IGD48-124 TWILIGHT



IGD121-145 SCHISTS



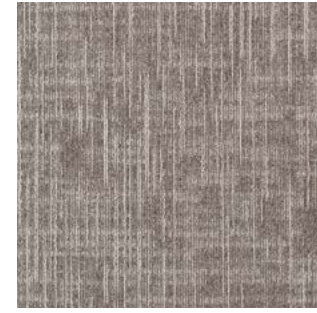
IGD124-94 SANDPIPER



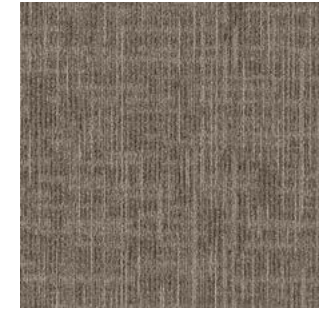
IGD94-59 NORSE



TTC48-124 TWILIGHT



TTC121-145 SCHISTS



TTC124-94 SANDPIPER



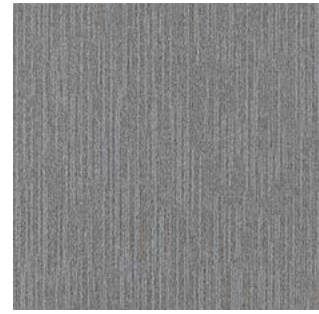
TTC94-59 NORSE



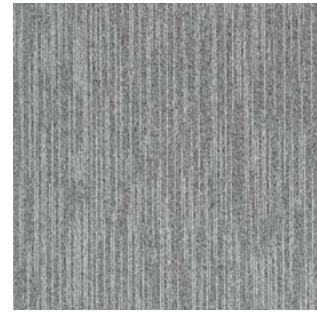
IGD120-178 ORES



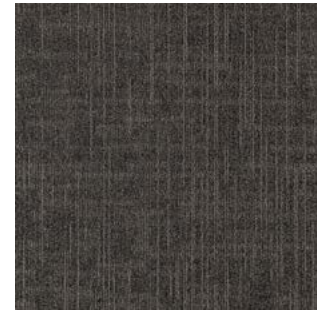
IGD133-59 ALLUVIUM



IGD108-122 ESTUARY



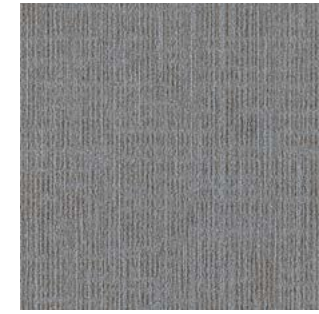
IGD180-138 SNOWMELT



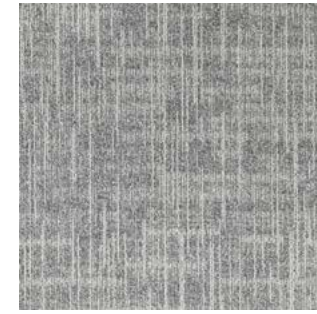
TTC120-178 ORES



TTC133-59 ALLUVIUM



TTC108-122 ESTUARY



TTC180-138 SNOWMELT



IGD122-120 SPIRITLAND



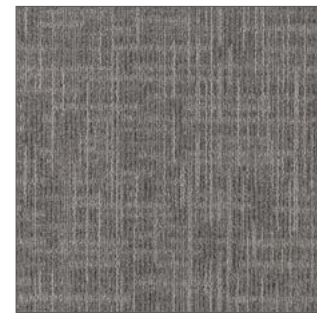
IGD108-13 FJORD



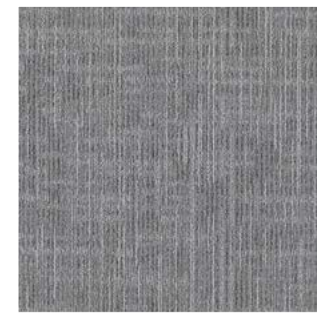
IGD133-120 FLUME



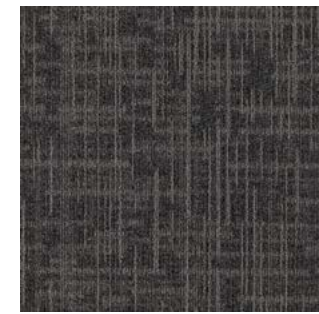
IGD67-59 LAHAR



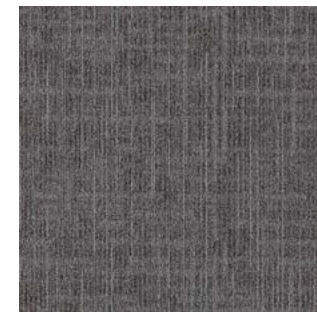
TTC122-120 SPIRITLAND



TTC108-13 FJORD



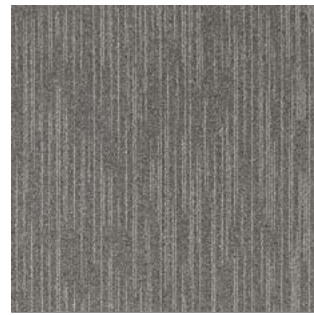
TTC133-120 FLUME



TTC67-59 LAHAR



IGD6-108 AEOLIAN



IGD153-5 MINERAL



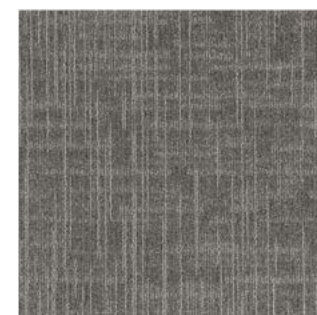
IGD13-119 ESKER



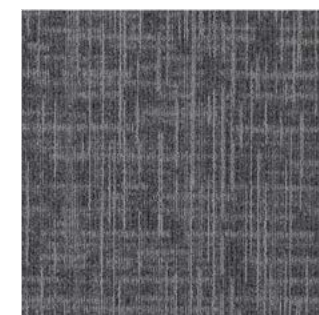
IGD157-178 ARCTIC OCEAN



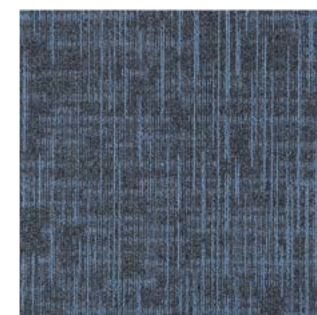
TTC6-108 AEOLIAN



TTC153-5 MINERAL



TTC13-119 ESKER



TTC157-178 ARCTIC OCEAN



IGD119-27 ASH BLANKET



IGD154-119 POLAR NIGHT

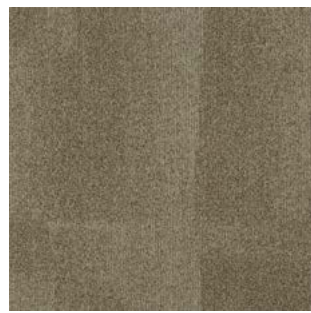


TTC119-27 ASH BLANKET



TTC154-119 POLAR NIGHT

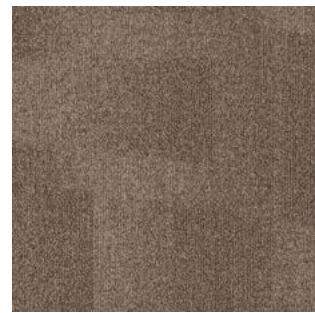
# COLORLINE



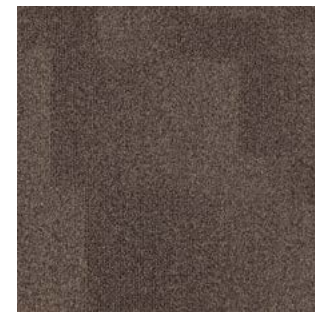
HDP48-124 TWILIGHT



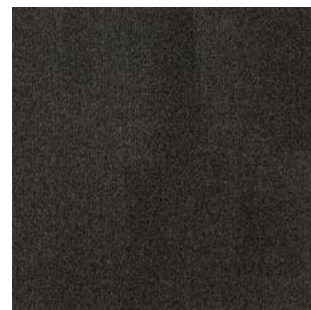
HDP121-145 SCHISTS



HDP124-94 SANDPIPER



HDP94-59 NORSE



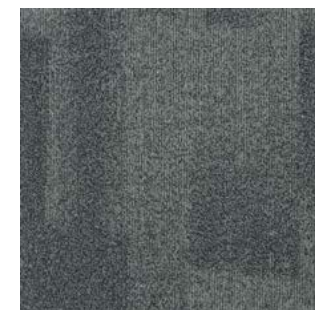
HDP120-178 ORES



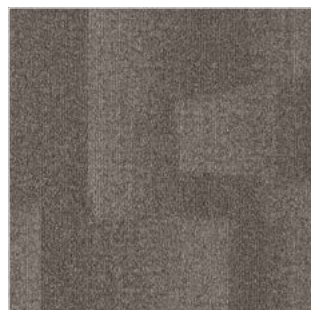
HDP133-59 ALLUVIUM



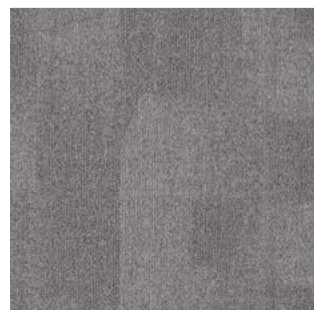
HDP108-122 ESTUARY



HDP180-138 SNOWMELT



HDP122-120 SPIRITLAND



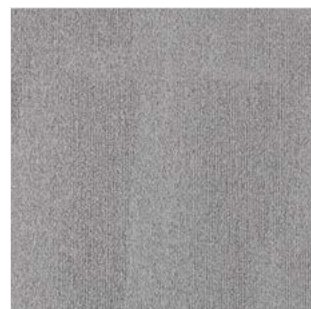
HDP108-13 FJORD



HDP133-120 FLUME



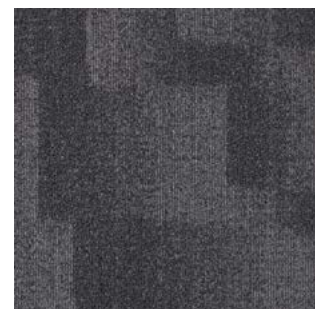
HDP67-59 LAHAR



HDP6-108 AEOLIAN



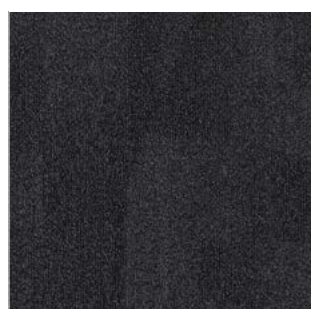
HDP153-5 MINERAL



HDP13-119 ESKER



HDP157-178 ARCTIC OCEAN



HDP119-27 ASH BLANKET



HDP154-119 POLAR NIGHT



Hidden Plains in Lahar, monolithic installation



# NORDIC STORIES

## Isograd / Tectonic / Hidden Plains

### SPECIFICATION

**Construction** - Tufted, Textured Loop

**Tile Size** - 50cm X 50cm

**Face Fiber** - 100% Milliken Certified Nylon

**Dye Method** - Solution Dyed

**Standard Backing** - PVC-Free WellBAC® Comfort  
Available with TractionBack®

**Nominal Total Thickness** - 8.2 mm AVG.(Isograd)  
8.4 mm AVG.(Hidden Plains/Tectonic)

### PERFORMANCE

**Flammability** - ≥ 0.45 (Class I)

**Texture Appearance Retention Rating (TARR)** - Severe

**Indoor Air Quality - CRI Green Label Plus™** - GLP100130, CARPET CATEGORY 13X

### 技术指标

**结构** - 簇绒织造圈绒结构

**产品尺寸** - 50 厘米 X 50 厘米

**表层纤维** - 100% 美利肯认证尼龙

**染色技术** - 原液染色

**标准底垫** - 不含 PVC-Free WellBAC® Comfort 软底  
可选装 TractionBack® 免胶

**额定总厚度** - 8.2 毫米 平均 (Isograd)  
8.4 毫米 平均 (Hidden Plains/Tectonic)

### 产品性能

**阻燃性** - ≥ 0.45 (一级)

**外观保持等级 (TARR)** - 重度商业使用

**室内空气质量 CRI Green Label Plus™** - GLP100130, 地毯类别 13X

### Installation Method 安装方式 :



**Monolithic**  
同一方向安装

### TractionBack®

Simplify your modular installation with Milliken's patented TractionBack®, an innovative backing system that is faster, more cost efficient, and environmentally superior to wet adhesives and peel-and-stick carpet tile.



Declare.

Milliken

**China**  
**North & North West & South West Of China**  
T +86 10 6465 1206  
T +86 133 0101 8460  
**South of China & HK & Macau**  
T +86 181 1743 0032  
**East & Central of China**  
T +86 21 6145 1758

**India**  
**Bangalore**  
T +91 98408 98963  
**Delhi**  
T +91 95010 11800  
**Hyderabad**  
T +91 99631 64059  
**Mumbai**  
T +91 98926 00362

**Rest of Asia**  
**Manila**  
T +63 915 816 7127  
**Seoul**  
T +82 2 3783 0747  
**Singapore**  
T +65 6593 1301  
**Tokyo**  
T +81 3 5203 8406  
**Jakarta**  
T +62 2129 6072 22



[www.millikencarpets.com](http://www.millikencarpets.com)

2710027460

Issued Aug 2022