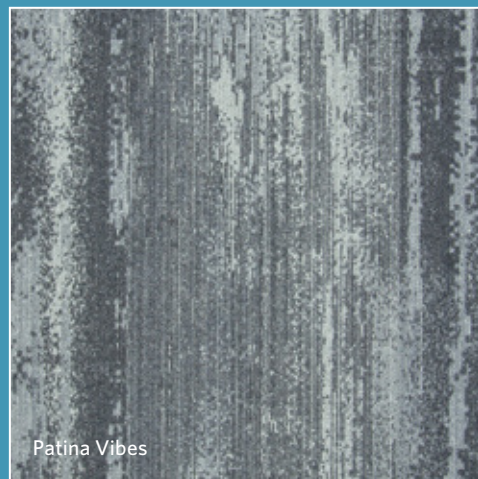




## PATINA VIBES



Patina Vibes



Milliken™  
Ontera™





## INSPIRED. INSPIRING.

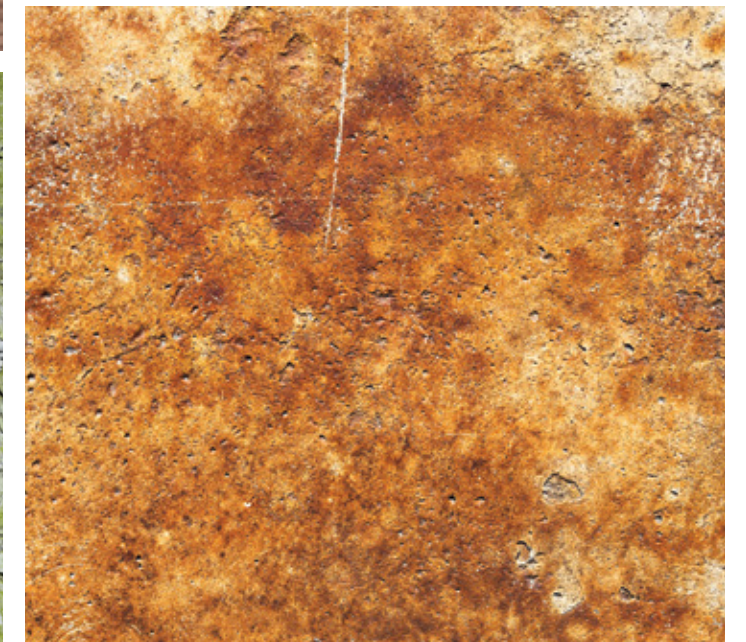
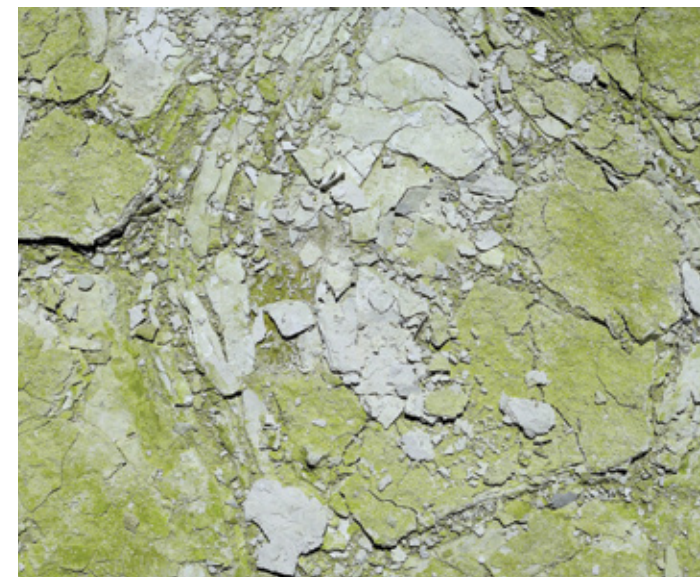
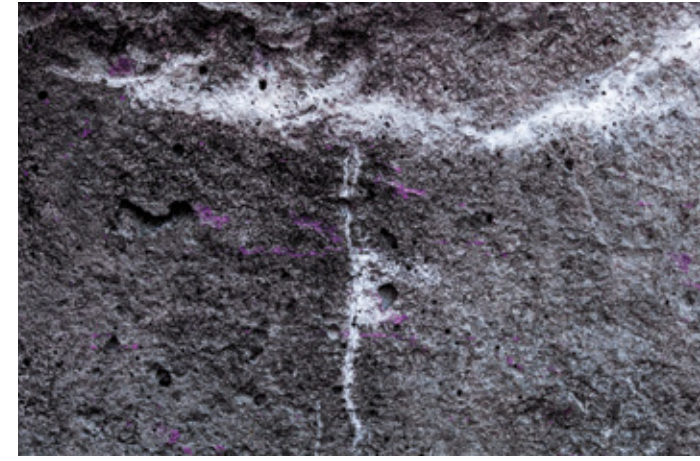
Invisible yet forceful. Silent yet welcoming. The beauty of nature at work.

Inspired by the process of atmospheric ageing that naturally occurs all around us, Patina Vibes delivers a dynamically rich colour palette balanced across an harmonious blend of textured tiles.

Patina Vibes will create beautiful, vibrant spaces within commercial environments. Explore the possibilities to create a Patina elegance within your own spaces.



Patina Vibes Lead Grey PAT153-118 (Bottom) and Neutral Zinc PAT154-152 (Top), Brick (Horizontal) Installation





# Surface Connections

## Patina - Powder Blue

Fine blueish film that forms on metal when exposed to the elements for long periods - adding a textural highlight to a once flat surface.



PAT139-6 PEWTER



PAT140-6-139 POWDER BLUE PEWTER



PAT6-140 POWDER BLUE



PAT146-140-139 PEWTER MULTI



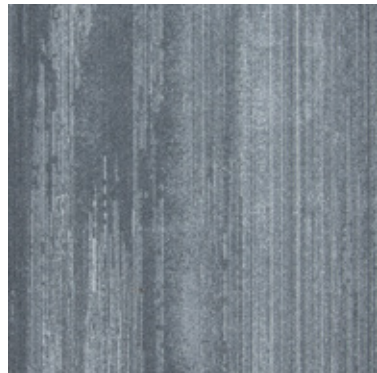
Patina Vibes Pewter PAT139-6 and Powder Blue Pewter PAT140-6-139, Brick (Horizontal) Installation



# Surface Connections

## Patina - Coral

Corrosion and slow oxidization of metal produces profoundly beautiful colour combinations such as the bright coral like colour found on brass.



PAT154-106 ALUMINUM



PAT146-154-106 CORAL ALUMINUM



PAT120-146 CORAL



PAT146-140-106 ALUMINUM MULTI



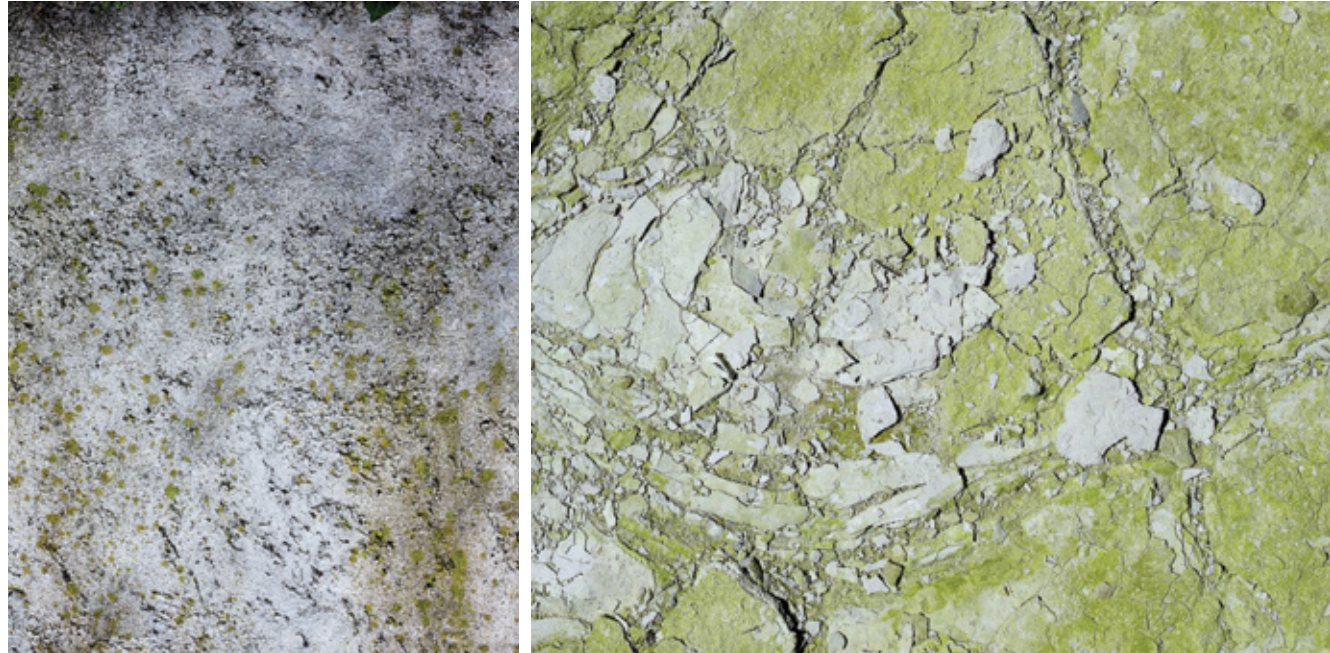
Patina Vibes Aluminum PAT154-106, Coral Aluminum PAT146-154-106 and Coral PAT120-146, Brick (Horizontal) Installation



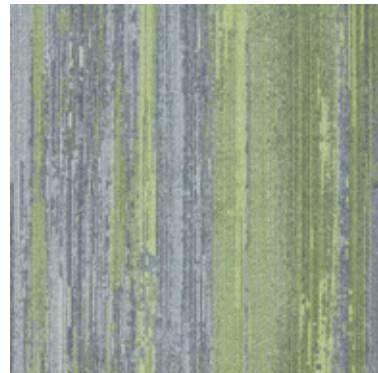
# Surface Connections

## Patina - Amazon

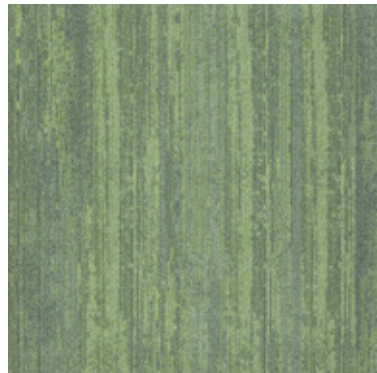
Nature reclaiming its territory in a mix of natural and electrifying vibrant greens.



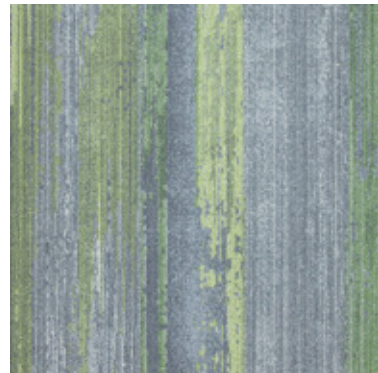
PAT154-152 NEUTRAL ZINC



PAT62-154-152 AMAZON ZINC



PAT43-62 AMAZON



PAT74-62-152 ZINC MULTI



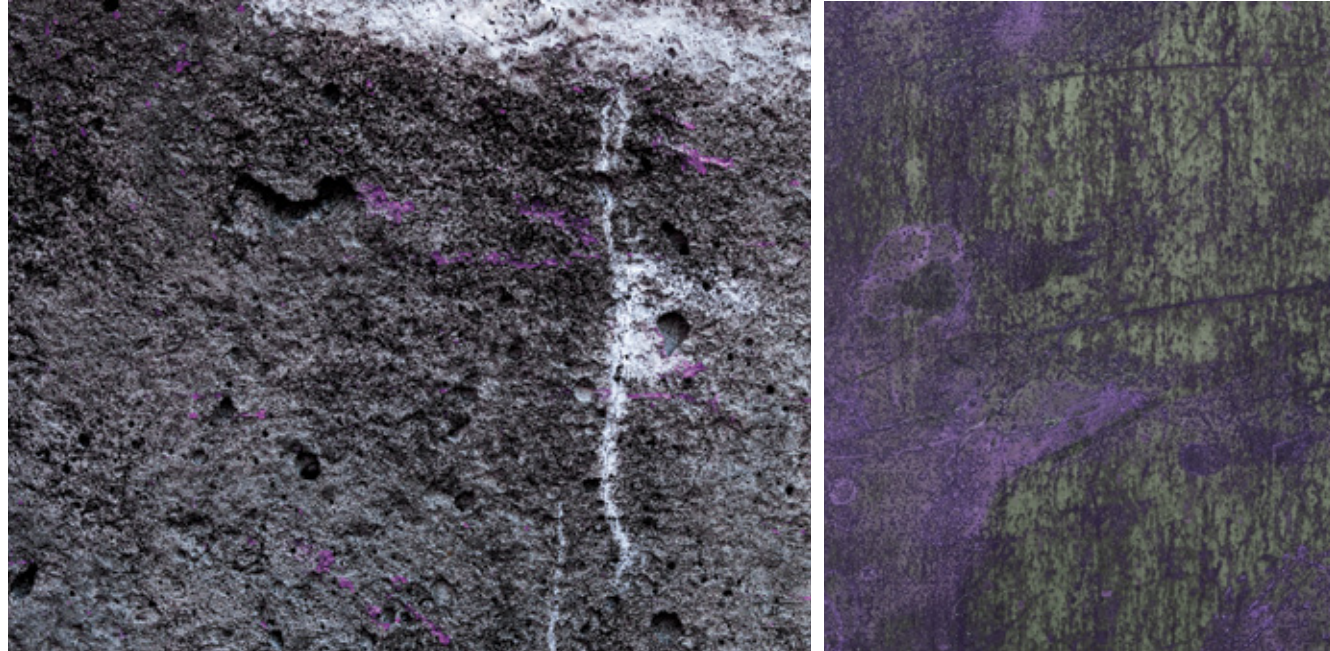
Patina Vibes Neutral Zinc PAT154-152 and Zinc Multi PAT74-62-152, Brick (Horizontal) Installation



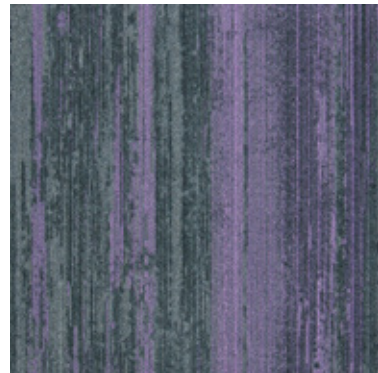
# Surface Connections

## Patina - Amethyst

Pearl like combinations of pinks and purples inspired by the texture of peeled paint on windswept stone walls.



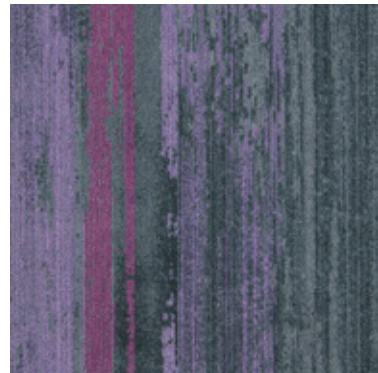
PAT13-118 BLACKENED STEEL



PAT151-13-118 AMETHYST STEEL



PAT6-151 AMETHYST



PAT137-151-118 STEEL MULTI



Patina Vibes Steel Multi PAT137-151-118, Amethyst Steel PAT151-13-118 and Blackened Steel PAT13-118, Brick (Horizontal) Installation



# Surface Connections

## Patina - Mulberry

Deep purple deposits infiltrating the crevasses and cracks on weathered timber and rock.



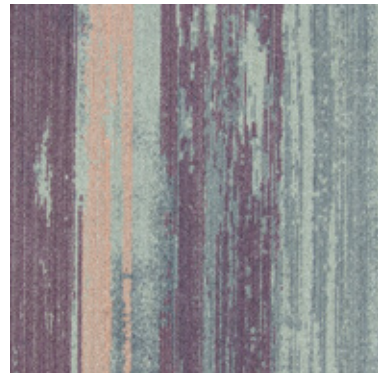
PAT13-48 ANTIQUE COPPER



PAT137-13-48 MULBERRY COPPER



PAT82-137 MULBERRY



PAT146-137-48 COPPER MULTI



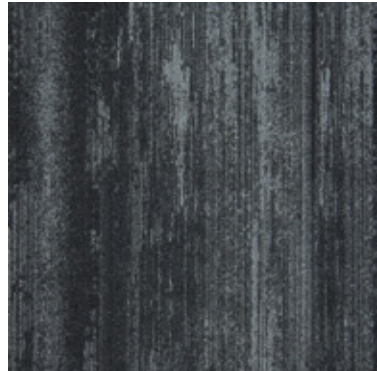
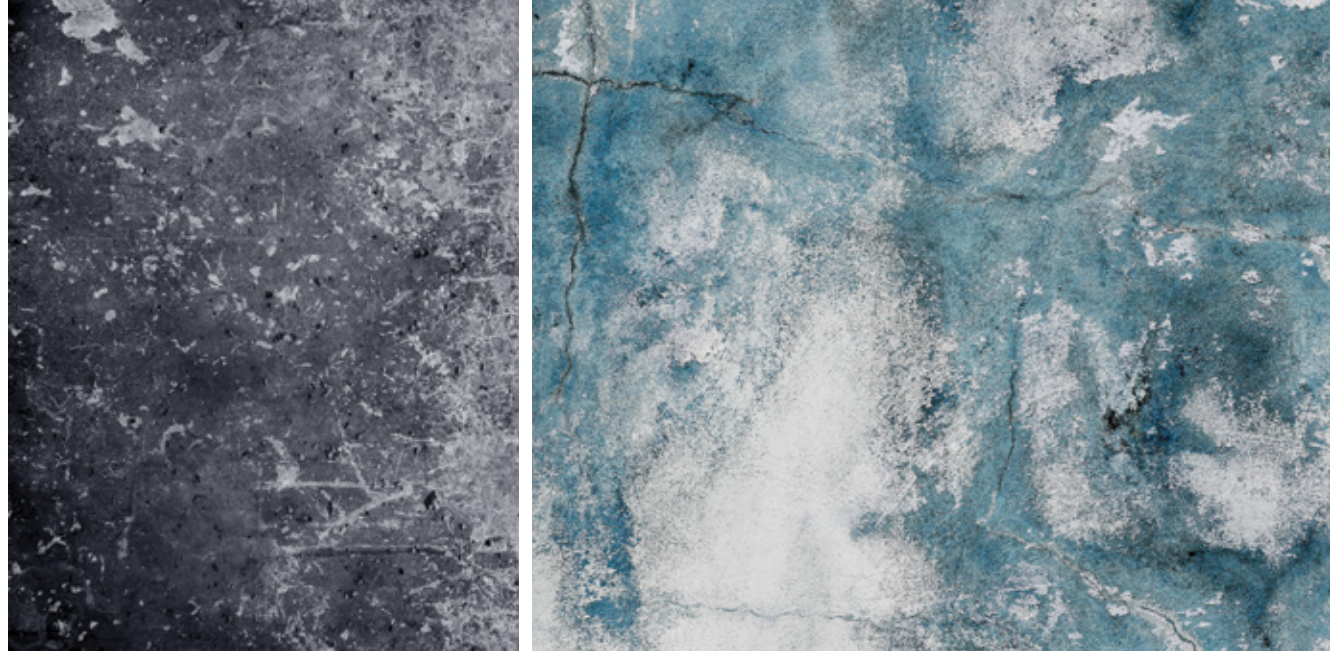
Patina Vibes Antique Copper PAT13-48 and Mulberry PAT82-137, Brick (Horizontal) Installation



# Surface Connections

## Patina - Marine

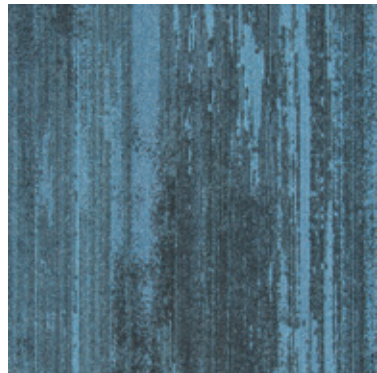
Beautiful, vibrant aqua found in naturally occurring patina in historic stone buildings of seaside villages.



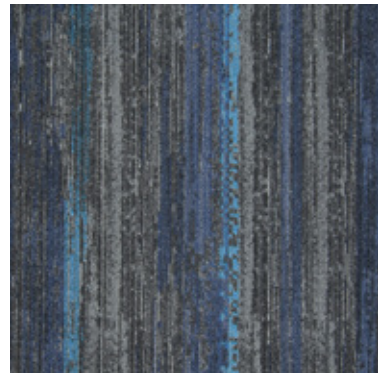
PAT13-119 STONE BLACK



PAT159-13-119 MARINE STONE



PAT119-159 MARINE



PAT19-159-119 STONE MULTI



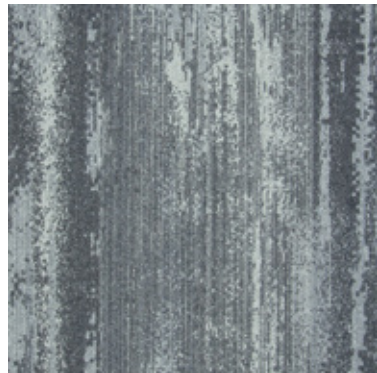
Patina Vibes Stone Black PAT13-119, Brick (Horizontal) Installation



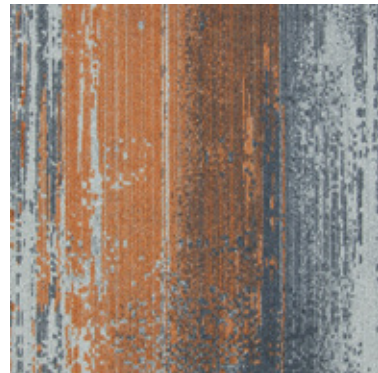
# Surface Connections

## Patina - Rust

Rich shades of rusted orange hues - inspired from solid concrete and timbers which have endured harsh elements of weather over time.



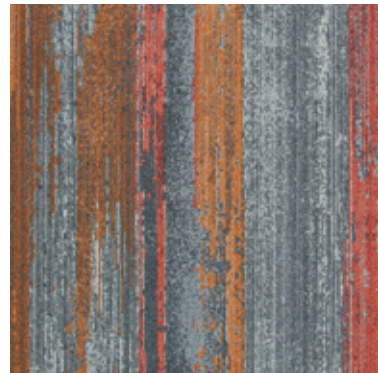
PAT118-108 AGED TIMBER



PAT33-118-108 RUST TIMBER



PAT114-33 RUST



PAT102-33-108 TIMBER MULTI



Patina Vibes Aged Timber PAT118-108, Rust Timber PAT33-118-108 and Rust PAT114-33, Brick (Horizontal) Installation

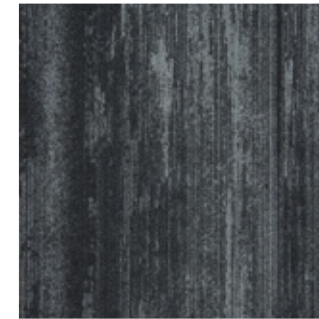




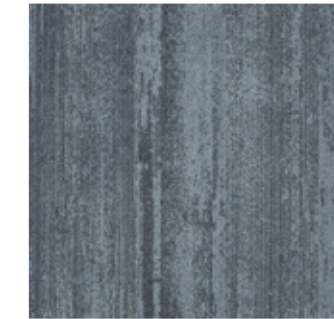
Patina Vibes Iron PAT153-152, Musk Iron PAT104-153-152, Aluminum PAT154-106 and Coral Aluminum PAT146-154-106, Brick (Horizontal) Installation



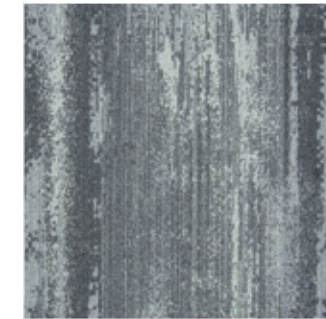
COLOURWAY



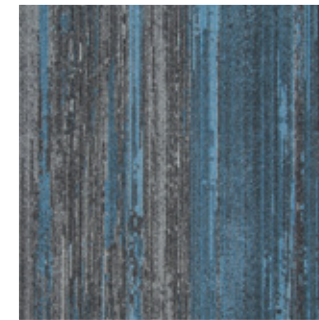
PAT13-119 STONE BLACK



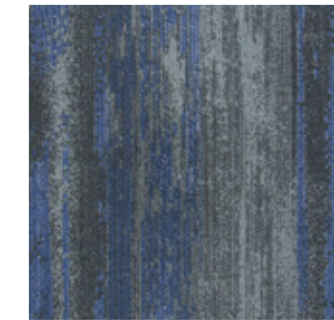
PAT119-153 POLISHED CONCRETE



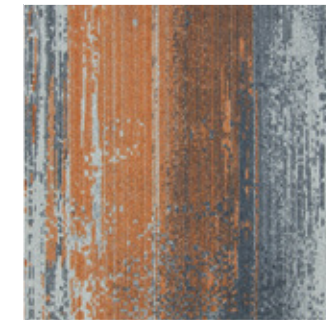
PAT118-108 AGED TIMBER



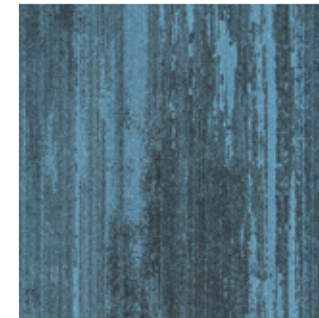
PAT159-13-119 MARINE STONE



PAT119-119-153 MYSTIC CONCRETE



PAT33-118-108 RUST TIMBER



PAT119-159 MARINE



PAT119-19 MYSTIC



PAT114-33 RUST



PAT19-159-119 STONE MULTI

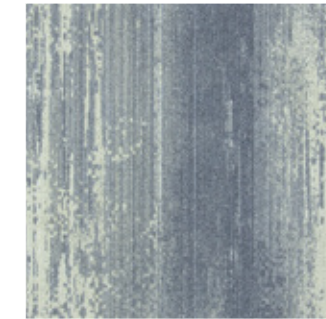


PAT157-19-119 CONCRETE MULTI



PAT102-33-108 TIMBER MULTI

COLOURWAY



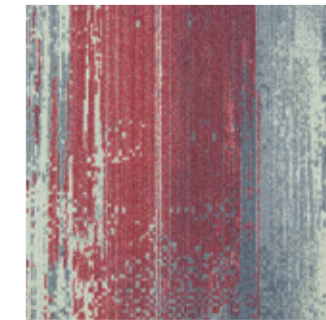
PAT13-83 GRANITE



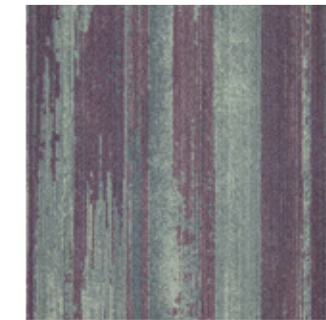
PAT13-48 ANTIQUE COPPER



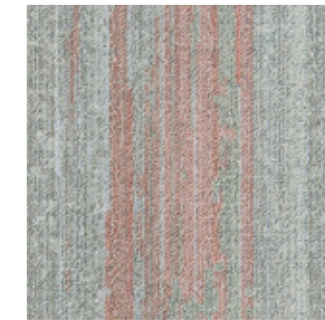
PAT48-21 VINTAGE BRASS



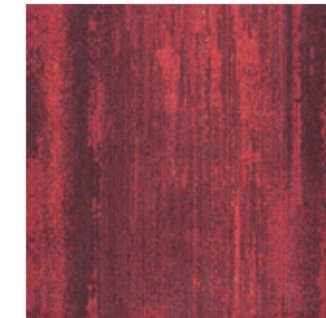
PAT169-13-83 MAGMA GRANITE



PAT137-13-48 MULBERRY COPPER



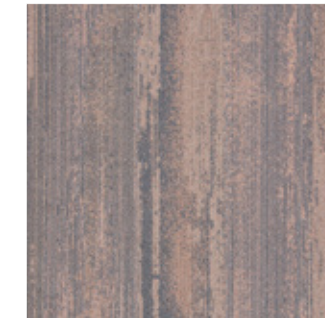
PAT146-48-21 DUNES BRASS



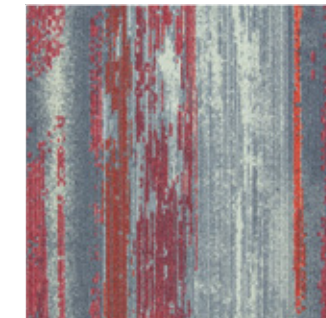
PAT82-169 MAGMA



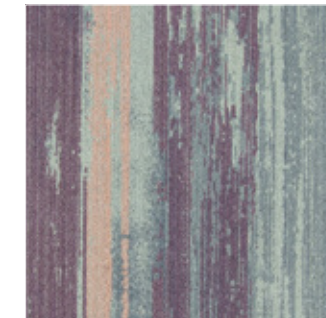
PAT82-137 MULBERRY



PAT68-146 DUNES



PAT33-82-83 GRANITE MULTI

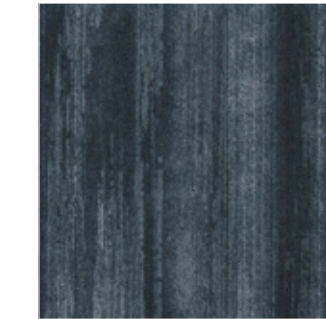


PAT146-137-48 COPPER MULTI

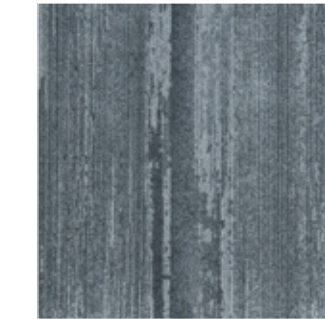


PAT149-146-21 BRASS MULTI

COLOURWAY



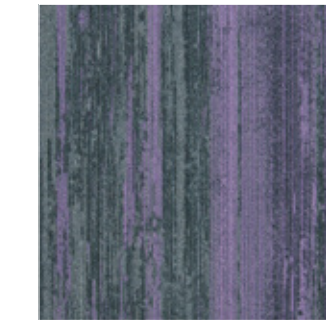
PAT13-118 BLACKENED STEEL



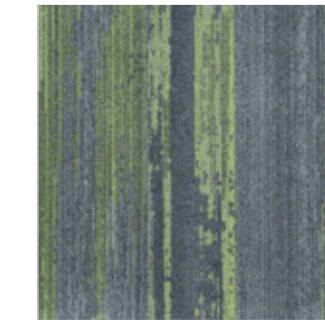
PAT153-118 LEAD GREY



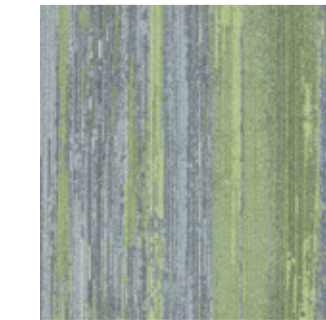
PAT154-152 NEUTRAL ZINC



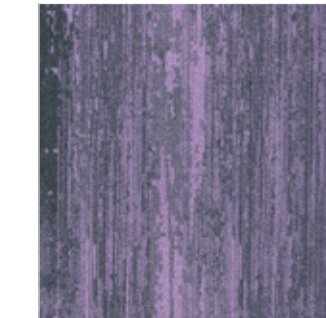
PAT151-13-118 AMETHYST STEEL



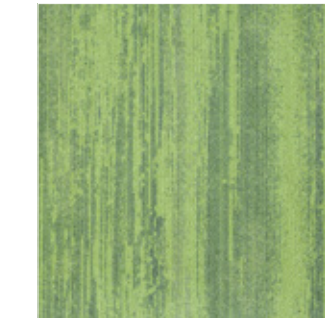
PAT103-153-118 LIME LEAD



PAT62-154-152 AMAZON ZINC



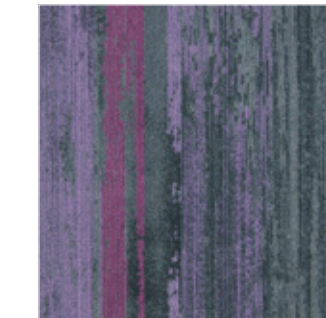
PAT6-151 AMETHYST



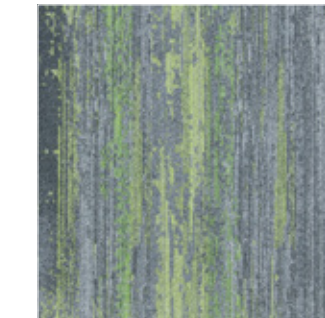
PAT71-103 LIME



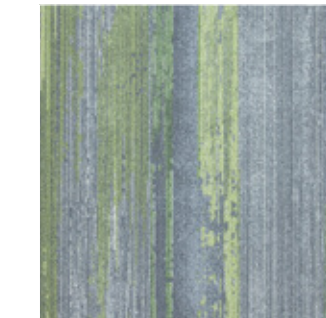
PAT43-62 AMAZON



PAT137-151-118 STEEL MULTI

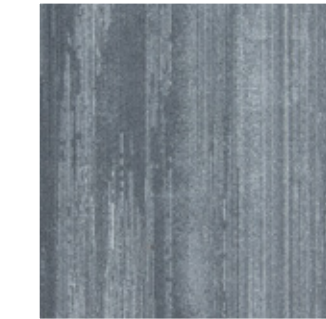


PAT141-103-118 LEAD MULTI



PAT74-62-152 ZINC MULTI

COLOURWAY



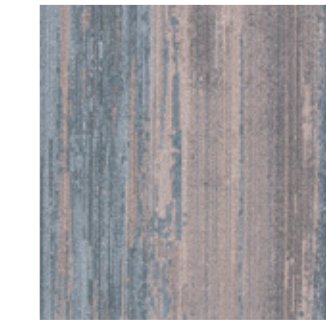
PAT154-106 ALUMINUM



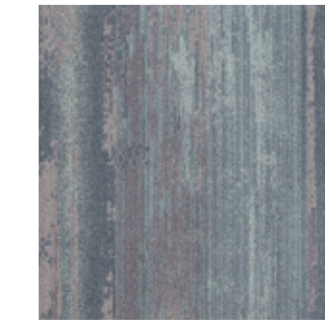
PAT153-152 IRON



PAT139-6 PEWTER



PAT146-154-106 CORAL ALUMINUM



PAT104-153-152 MUSK IRON



PAT140-6-139 POWDER BLUE PEWTER



PAT120-146 CORAL



PAT149-104 MUSK



PAT6-140 POWDER BLUE



PAT146-140-106 ALUMINUM MULTI



PAT140-104-152 IRON MULTI



PAT146-140-139 PEWTER MULTI



# PATINA VIBES

## SPECIFICATION

### Construction

Tufted, Textured Loop

### Tile size

50cm x 50cm

### Yarn Type

Milliken Certified Wear-On® Nylon Type 6,6

### Stain Repel | Stain Resist | Soil Release

STAINSMART®

### Antimicrobial

ALPHASAN® Built-In protection

### Dye Method

MILLITRON® Dye Injection

### Standard Backing

WellBAC™ Comfort (PVC-Free)  
(non-reactive cushion backing)

### Nominal Total Thickness

7.4 mm

### Recyclable

100%

### Gauge

1/12

### Stitches Per Inch

9.9

### VOC

Pass (ISO10580:2010)

### ACCS Grading

Commerical Extra Heavy Duty & Stairs (CEHD(S))

### ECS Grading

Level 4 (Certificate NO. 18002)

### Environmental

Declare - 3<sup>rd</sup> Party Verified RED LIST FREE

### Acoustic Rating

NRC ≥ 0.25 (Exceeds standard acoustic requirements of the carpet Institute)

Ln,w ≤ 47dB (Well below the BCA limit of 62dB)

### Recommended Maintenance

Refer to the Milliken-Ontera Care & Maintenance guide  
Millicare® Care Plan available in some regions.

### Exclusive: Site-Related Solutions (SRS)

Milliken-Ontera Cushion backed tile + Non-Reactive standard adhesive means install 60 days after a new concrete pour, fully warranted no testing required. Refer millikenontera.com.au

### Warranties

15-Year Wear Warranty

15-Year Dimensional Stability Warranty

15-Year Anti-Static Warranty

15-Year Castor Chair Warranty

### Recommended Installation Method



BRICK (HORIZONTAL)



Alliance  
Founding  
Member



Declare.



### Australia:

Toll Free: 1800 668 372

### New Zealand:

Toll Free: 0800 668 372

[www.millikenontera.com](http://www.millikenontera.com)  
(Australia & New Zealand)

This WellBAC™ cushion-back tile product is covered by one or more patents, published applications and | or patents pending. Specification are subject to normal manufacturing tolerances and may be subject to change without prior notice. Copies of actual test results are available upon request.

© 2019 Milliken & Company | Design © Milliken & Company



**Growing greener for over 100 years.**  
Visit [milliken.com](http://milliken.com) for more information.

Furniture provided by: **Schiavello**  
[www.schiavello.com](http://www.schiavello.com)

Cover image: *Background Patinated Wall & Shutter*, by vczolivier. © Adobe Stock Images