



TEXTURED SKY

Milliken™



2 Cloud Canopy in Snow Melt CLD144-54-209. 25cm x 1m planks. Vertical ashlar.

# TEXTURED SKY

BOLD CELESTIAL DESIGNS



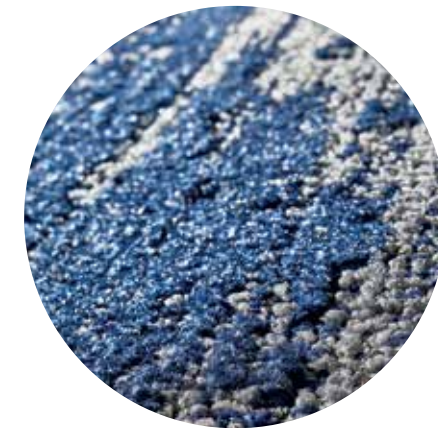
CLOUD CANOPY

HORIZON LINE

RAINMAKER

At any given moment the sky flows with a multitude of moving shapes, textures and immense depth. From passing white clouds, to thunderous showers, to a hazy morning sunrise - this bold imagery is both awe-inspiring and captivating. Inspired by these upward masterpieces, Textured Sky brings an organic atmosphere inside. Three SDN patterns and 20 colors are available in 50cm x 50cm squares and 25cm x 1m planks. Plus, a gorgeous high-luster yarn by Universal Fibers® can be found in each tile.





## TEXTURED SKY FEATURES A HIGH-LUSTER YARN

Meticulously woven throughout each tile, Textured Sky features a gorgeous high-luster yarn by Universal Fibers®. This yarn showcases a brilliantly reflective look, creating a sophisticated, almost-glistening finish. Accentuating the Textured Sky collection as a whole, this yarn promises a refined and uniquely incandescent aesthetic.









## NO TWO SKYSCAPES ARE EXACTLY THE SAME

Just as the clouds above drift and form new  
skylines every day, unique variations are also  
found in each color of Textured Sky.

This color variation allows you to design  
unique flooring solutions every time you use it,  
**so be sure to order more than one sample**  
before you start creating. For the complete  
range of variation within each Textured Sky  
color, contact your representative for more  
information or visualize now at [MillikenFloors.com](http://MillikenFloors.com)



CLOUD CANOPY



RAINMAKER



HORIZON LINE



COLOR LINE IN HORIZON LINE



HRZ208-211-122 DAWN



HRZ209-217 NIMBUS



HRZ144-209 MORNING MIST



HRZ209-73-138 SILVER LINING



HRZ144-54-209 SNOW MELT



HRZ208-211-93 HEAT WAVE



HRZ144-152 CIRRUS



HRZ144-6 DAYBREAK



HRZ218-154 BLUE SKIES



HRZ144-54-6 FOREST FOG



HRZ208-59-122 SOLAR



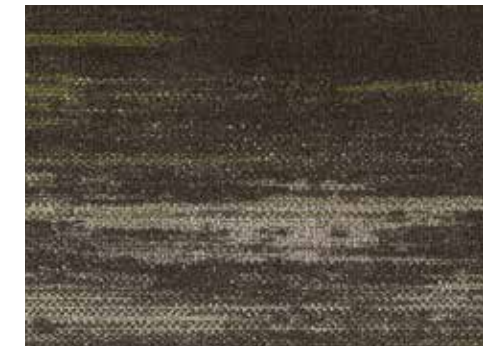
HRZ208-67 STRATUS



HRZ218-119 TWILIGHT



HRZ218-118 CLOUDBURST



HRZ208-45-10 MIRAGE



HRZ208-59-27 THERMAL



HRZ218-67 ARCUS



HRZ218-27 NIGHTFALL



HRZ218-52 MONSOON



HRZ218-46 FIRST FROST

COLOR LINE IN RAINMAKER



RNM208-211-122 DAWN



RNM209-217 NIMBUS



RNM144-209 MORNING MIST



RNM209-73-138 SILVER LINING



RNM144-54-209 SNOW MELT



RNM208-211-93 HEAT WAVE



RNM144-152 CIRRUS



RNM144-6 DAYBREAK



RNM218-154 BLUE SKIES



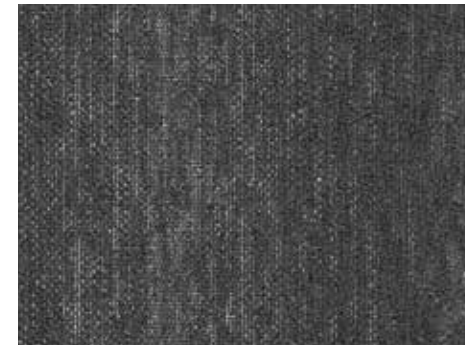
RNM144-54-6 FOREST FOG



RNM208-59-122 SOLAR



RNM208-67 STRATUS



RNM218-119 TWILIGHT



RNM218-118 CLOUDBURST



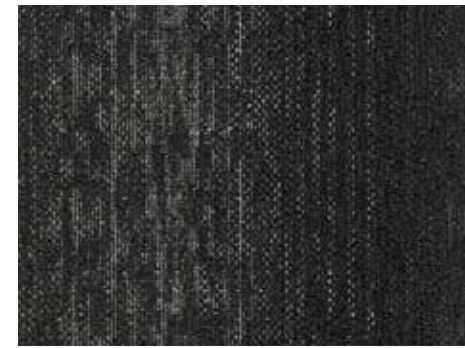
RNM208-45-10 MIRAGE



RNM208-59-27 THERMAL



RNM218-67 ARCUS



RNM218-27 NIGHTFALL



RNM218-52 MONSOON



RNM218-46 FIRST FROST

COLOR LINE IN CLOUD CANOPY



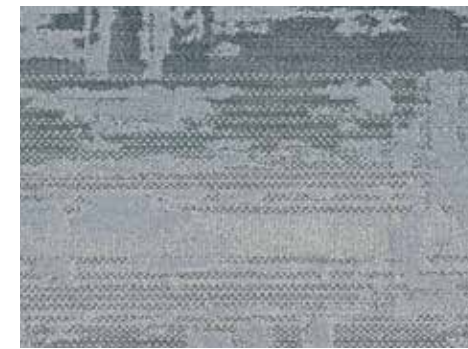
CLD208-211-122 DAWN



CLD209-217 NIMBUS



CLD144-209 MORNING MIST



CLD209-73-138 SILVER LINING



CLD144-54-209 SNOW MELT



CLD208-211-93 HEAT WAVE



CLD144-152 CIRRUS



CLD144-6 DAYBREAK



CLD218-154 BLUE SKIES



CLD144-54-6 FOREST FOG



CLD208-59-122 SOLAR



CLD208-67 STRATUS



CLD218-119 TWILIGHT



CLD218-118 CLOUDBURST



CLD208-45-10 MIRAGE



CLD208-59-27 THERMAL



CLD218-67 ARCUS



CLD218-27 NIGHTFALL



CLD218-52 MONSOON



CLD218-46 FIRST FROST



# STYLE BACKED BY PERFORMANCE

Milliken Floor Covering offers products and expertise in all areas of your commercial spaces, including high-performance entryway systems, modular and broadloom carpet, and resilient flooring. Simplify your flooring projects by working with a trusted partner that lets you focus on enjoying the process of creating a great space.



## WARRANTY

Our products are backed by lifetime commercial warranties that ensure quality and give peace of mind.



## SUSTAINABILITY

Milliken carpet, LVT, and entrance flooring tiles are carbon neutral everywhere in the world. As part of our M/PACT™ carbon neutral program, great care is taken when selecting materials, our carpet materials are Red List Free and PVC Free.



## MOISTURE MANAGEMENT

Milliken modular carpet is a moisture mitigation solution all by itself. Our carpet's WellBAC® open-cell backing allows the floor to breathe and moisture to evaporate, unlike hardback products.



## STAINSMART®

StainSmart provides lifetime resistance for your carpet against penetrating stains and soil.



## WELLBAC® CUSHION

WellBAC® cushion provides superior underfoot comfort while improving the carpet's durability and offering ergonomic, acoustic and environmental benefits.



## TRACTIONBACK®

Our bio-based, high-friction coating keeps carpet tiles securely in-place without additional adhesives, eliminating the need to prime or seal the floor, thereby reducing installation time and costs.



# TEXTURED SKY

Horizon Line / Rainmaker / Cloud Canopy

## Construction

Tufted, Textured Loop,  
Tip Shear

## Tile Size

50 cm x 50 cm (19.7" x 19.7")  
25 cm x 1 m (9.85" x 39.4")

## Yarn Type

Universal Fibers®  
Solution-Dyed Nylon

## Stain Resist / Soil Release

StainSmart®

## Finished Pile Height

Horizon Line: 0.16" (4.06 mm)  
Rainmaker: 0.15" (3.81 mm)  
Cloud Canopy: 0.16" (4.06 mm)

## Average Density(Finished)

Horizon Line: 6,837  
Rainmaker: 8,229  
Cloud Canopy: 8,553

## Standard Backing

PVC-Free WellBAC®  
Comfort Plus  
Available with  
TractionBack®

## Texture Appearance Retention Rating (TARR)

Heavy Traffic End-Use  
Applications

## Recommended Installation Method(s)

All Plank Methods



MONOLITHIC ASHLAR



V. ASHLAR ALL PLANK METHODS

## SUSTAINABLE FEATURES

**Textured Sky** is manufactured with WellBAC® Comfort cushion backing, and is certified NSF-140 Gold with 40.1% pre-consumer recycled content by total product weight. **Textured Sky** is also available with our NSF-140 Platinum backing option. All Milliken modular carpets carry Environmental Product Declarations and Health Product Declarations, which contribute to LEED certification. Additionally, Milliken modular carpets carry Declare® transparency labels and comply with the Red List Imperative of the Living Building Challenge.™



## M/PACT™ CARBON NEUTRAL PRODUCT

## TRACTIONBACK®

Simplify your modular installation with Milliken's patented TractionBack®, an innovative backing system that is faster, more cost efficient, and environmentally superior to wet adhesives and peel-and-stick carpet tile.

Scan to explore the collection story.

## SHOWN ON THE COVER

(Front) Horizon Line in Dawn HRZ208-211-122. (Back) Cloud Canopy in Twilight CLD18-119.



Images in this brochure and architect folder are approximate for color and pattern scale. Please use actual carpet samples to make your final selections.

Milliken™