



SANDHILLS

Milliken



"My art bonds me to the land and my environment. Everything I do is influenced by nature and where I am in that moment in time."
Helena Geiger

Milliken



Sandhills

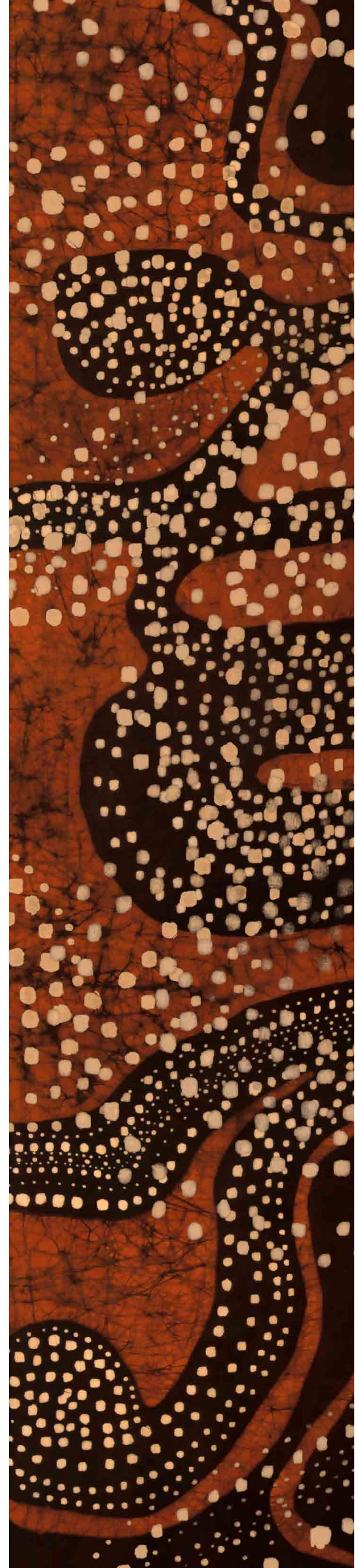
The Sandhills Collection portrays the mesmerising journey through country by Indigenous textile artist Helena Geiger, expressing her deeply intertwined spiritual relationship and connection to the natural environment.

Sandhills evokes the raw beauty and ethereal energy of the landscape that Helena experienced during her journey through Central Australia, articulating her impressions and memories of the land and visualised in the traditional textile techniques of Batik.

Sandhills expresses the silent wonderment of our unique and ancient outback landscape, its flowing grassy plains, and formidable mountains, piercing rocky formations, and the deeply intense colours of the red sand dunes, golden and green rainforests, and bushlands.

Helena's sensory journey has been authentically translated into designs and colourways that merge our internal spaces and the natural environment in the form of a commercial carpet collection perfect for use in all market segments.





Helena Geiger Textile Artist

Helena Geiger was born in Waterloo, Inner Sydney into an Indigenous culture from her mother's side who is Gumbaynggirr from the New South Wales Mid-North Coast. Helena is a contemporary textile artist, specialising in Batik and Shibori hand-dyed textiles, and has exhibited her artwork collections throughout Australia and abroad.

The Sandhills Collection has been created through the meaningful partnership between Helena and Milliken, culminating in an authentic interpretation of her textile designs into a commercial floor covering collection, that includes six distinctive designs in six natural colour palettes.

For over 20 years, Helena's work in the furnishing, textile, and fabric printing industry inspired her to expand into printed textiles. It was here that she discovered that textiles celebrating the Australian landscape were not widely available. As a result, Helena began her journey into creating textiles inspired by the dynamic environment in which she lives, whilst also acknowledging the respect and responsibility for the land we live on.

The Sandhills Collection is a memoir of Helena's journey throughout Central Australia. Her designs evoke the diverse and dynamic landscape created from her recollections of the intertwined layers of natural formations and colours. These designs are a representation of the heartbeat of the natural Australian landscape – the land, hills, and rocky chasms, as well as waterways, bushlands, and rainforests.

Helena's memories and experiences inspire her work in Batik and Shibori, an evolving art practice deeply rooted in ancient techniques, successful in building layers of detail and texture.

"What I love about the Batik process is that every step informs the next. It develops and changes direction with every colour and layer of wax that is applied".

Each Batik textile produced, is unique, cannot be duplicated and is a perfect medium to capture the essence of textures and details found in the organic environment. The natural dyes traditionally used in Batik textiles, mimic the essence of colours occurring in nature. Helena's expressive artistic character gives a voice to her understanding of the diverse Australian landscape.

Helena works full-time from her studio in the tranquil setting of the New South Wales South Coast. With National parkland on her doorstep, Helena immerses herself in this pristine environment, recording the textures and markings of her surroundings, photographing and sketching patterns found on scribbly bark, weathered sandstone, ochre, rocks, moss, seaweed, and shells.

Helena Geiger's art is a symbiotic expression of her experience with her environment.



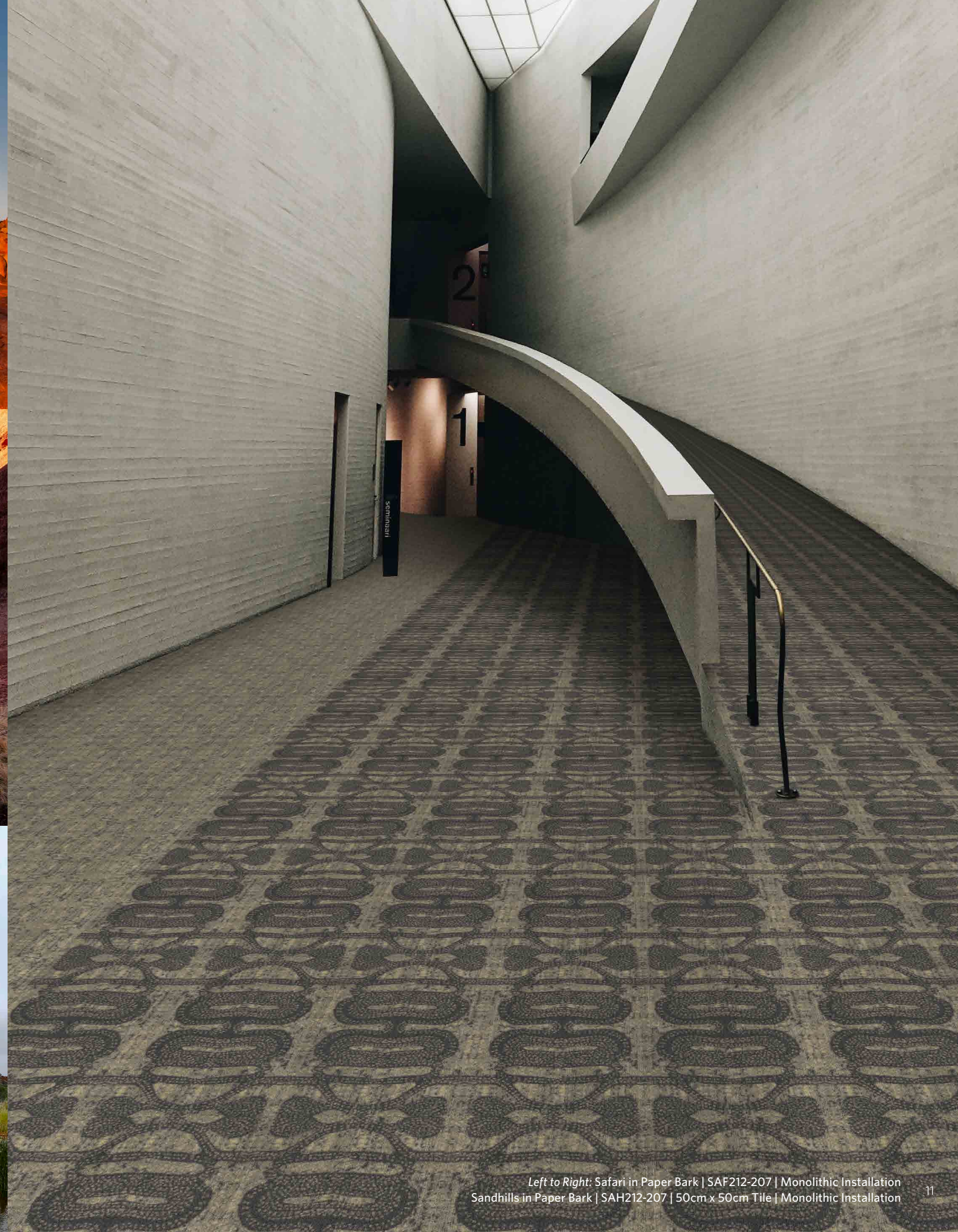
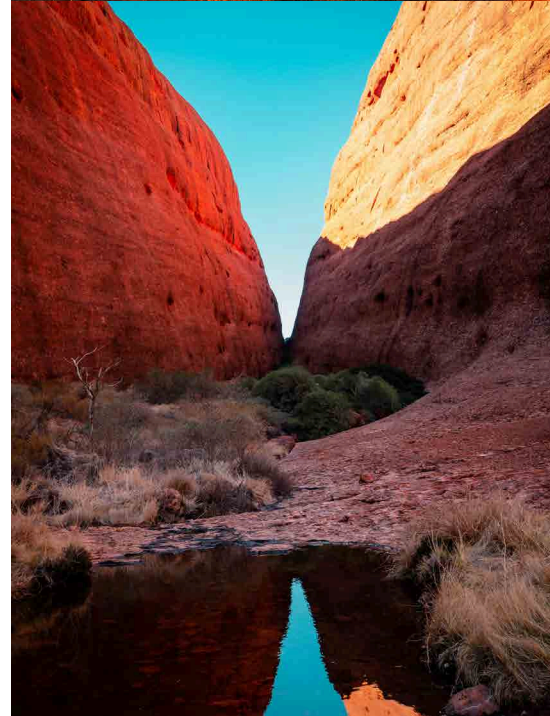
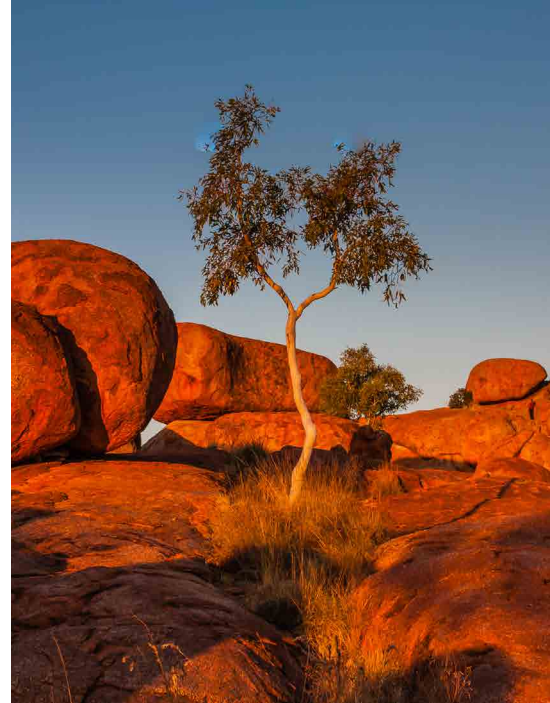
Sandhills

Sandhills is the embodiment of Helena Geiger's symbiotic relationship to her surroundings and is an immersion of her experience and connection in the natural world and artistic expression.

Evoking the landscape of the Australian desert, Sandhills translates the movement of undulating hills and ravines, ancient rocky chasms and desert sand through texture and depth. These ethereal forms reflect the harmonious connection of the landscape, which flows endlessly back and forth celebrating the mystical experience and its ever-changing elements.

These panoramic landscapes are embedded with trees, tufts of grass and spinifex which are transcribed by Helena through an intricate network of dots across the design. Sandhill's layered patterns and crackle effects are an authentic representation of the original Batik textile, which commemorate and celebrate the depth and diversity of the landscape through which Helena travelled.

Its organic and earthy patterns create a bold floorscape into interior spaces blending the line between our natural and built environments. Sandhills sits boldly in a space, unexpected and dramatic, honouring both the raw and delicate beauty of our desert landscapes.







Left to Right: Metro Park Stone LVT | Chalkboard in Iron | CKB133 | 457.2mm x 914.4mm | Monolithic Installation
Sandhills | Safari in Powdered Rock | SAF174-4 | Monolithic Installation
Sandhills | Sandhills in Powdered Rock | SAH174-4 | 50cm x 50cm Tile | Monolithic Installation



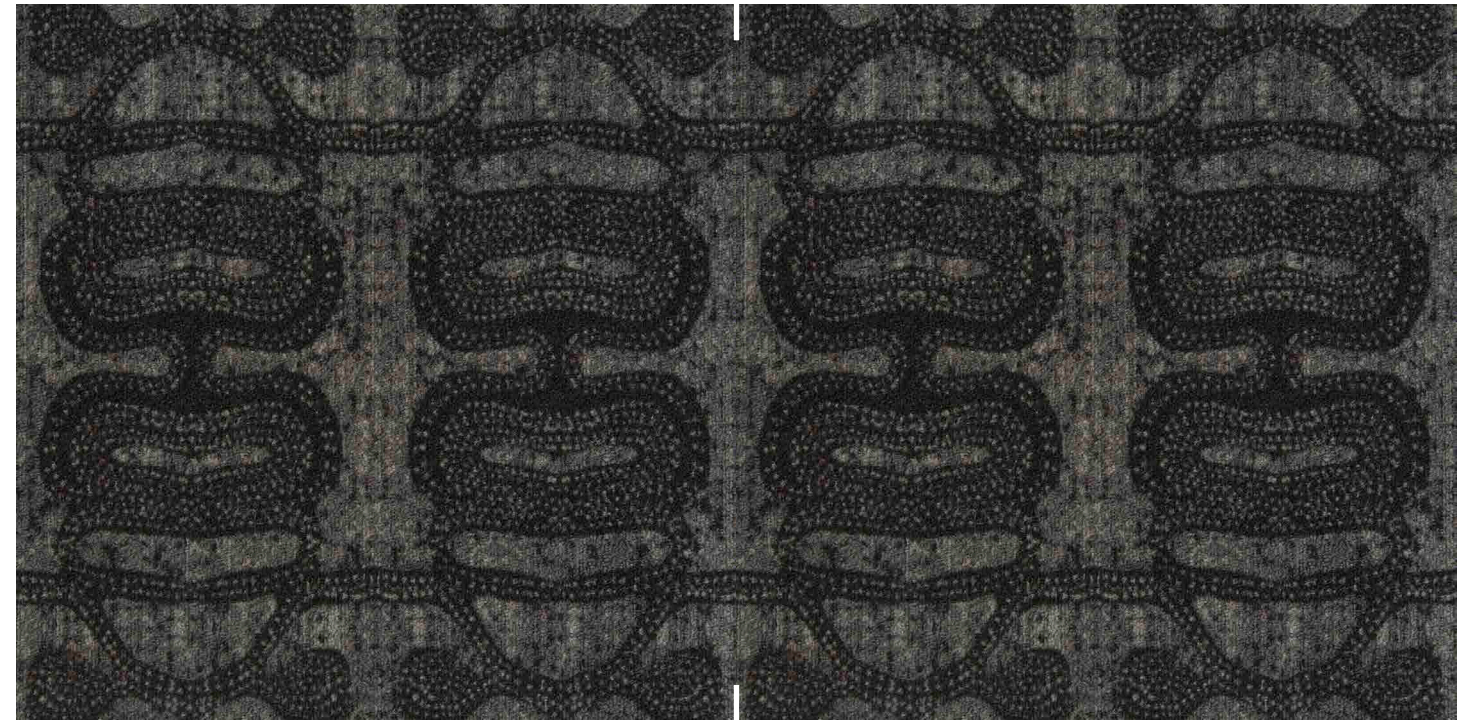
Sandhills in Spinifex | SAH62-5 | 50cm x 50cm Tile | Monolithic Installation



Sandhills

SINGLE TILE REPEAT: 1M X 1M AND 50CM X 50CM
1 TILE PATTERN | 2 TILES SHOWN

MODULAR TILE



SAH174-4 | POWDERED ROCK



SAH70-82
LILLY PILLY



SAH212-207
PAPER BARK



SAH176-96
WATTLE



SAH33-10
RED EARTH



SAH62-5
SPINIFEX

COORDINATE DESIGNS & COLOURWAYS

METRO
PARK STONE



CKB133
IRON

COMFORTABLE
CONCRETE



LDB119-174
CAST

AMPLIFIER



ECH119-154
FUSION

KARONA 3



ECL174-27
ROGUE

SANDHILLS



SAF174-4
POWDERED
ROCK

SANDHILLS



PAS62-5
SPINIFEX



Safari

The mesmerising Safari design reveals the granular, unrestrained and fragmented composition of sand, unearthing an intricate symmetrical pattern symbolic of the vast expanses of desert terrain.

The refined balance created between the layers of Safari embody the natural harmony of the desert landscape and its timeless space and ethereal beauty.

The delicate nature of Safari and its subtle geometric composition provides a confident certainty to any space and thoroughfare through its seamless dimensional quality.

Safari captures the right balance of elegance and simplicity that will combine effortlessly with other statement collections.



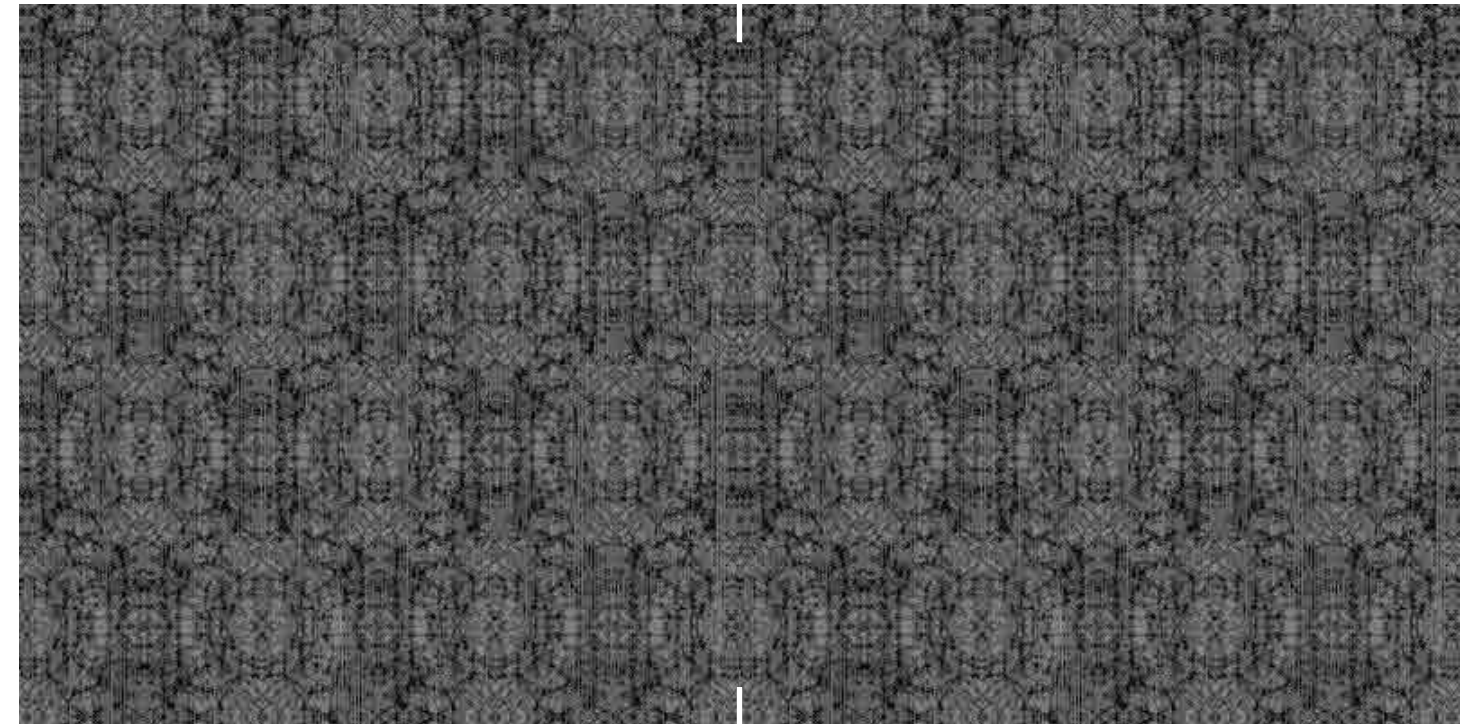




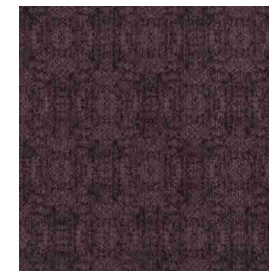
Safari

SINGLE TILE REPEAT: 50CM X 50CM
1 TILE PATTERN | 2 TILES SHOWN

MODULAR TILE



SAF174-4 | POWDERED ROCK



SAF70-82
LILLY PILLY



SAF212-207
PAPER BARK



SAF176-96
WATTLE



SAF33-10
RED EARTH



SAF62-5
SPINIFEX

COORDINATE DESIGNS & COLOURWAYS

RIPPLE



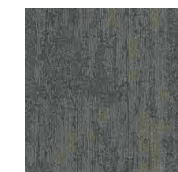
RIP27-79
OSCILLATION

FREE FLOW



FOG6
STORM

ARCTIC SURVEY



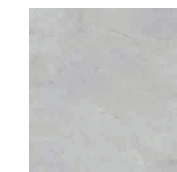
IST171-25
GREAT MELT

COLOUR COMPOSITIONS



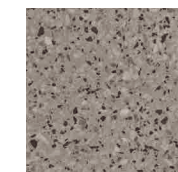
CCM48
TENSION

METRO PARK STONE



SLA209
MICA

MIXED FORMATIONS STONE



OPF234-208
IVORY



Passage

The sinuous, surging forms of Passage symbolise the eternal and fluid movement of the natural forms of the desert and create glimpses into another dimension of Helena's experience of the Australian landscape.

A dynamic background of crackled linework expresses the depth and textures of chasms and rock faces, with intricate dot patterns giving animation to grassy tufts, spinifex and shrubs that are embedded in the environment.

Passage is a unique and authentic representation of Helena's textiles celebrating the fusion of craft techniques and the visual elements of the landscape.

Dramatic, multidimensional, versatile and uncompromising, the intrepid Passage can adorn large spaces alone or with complementary Milliken floor coverings without losing its integrity in any combination.



Passage in Wattle | PAS176-96 | 25cm x 1m Plank | Ashlar (Vertical) Installation

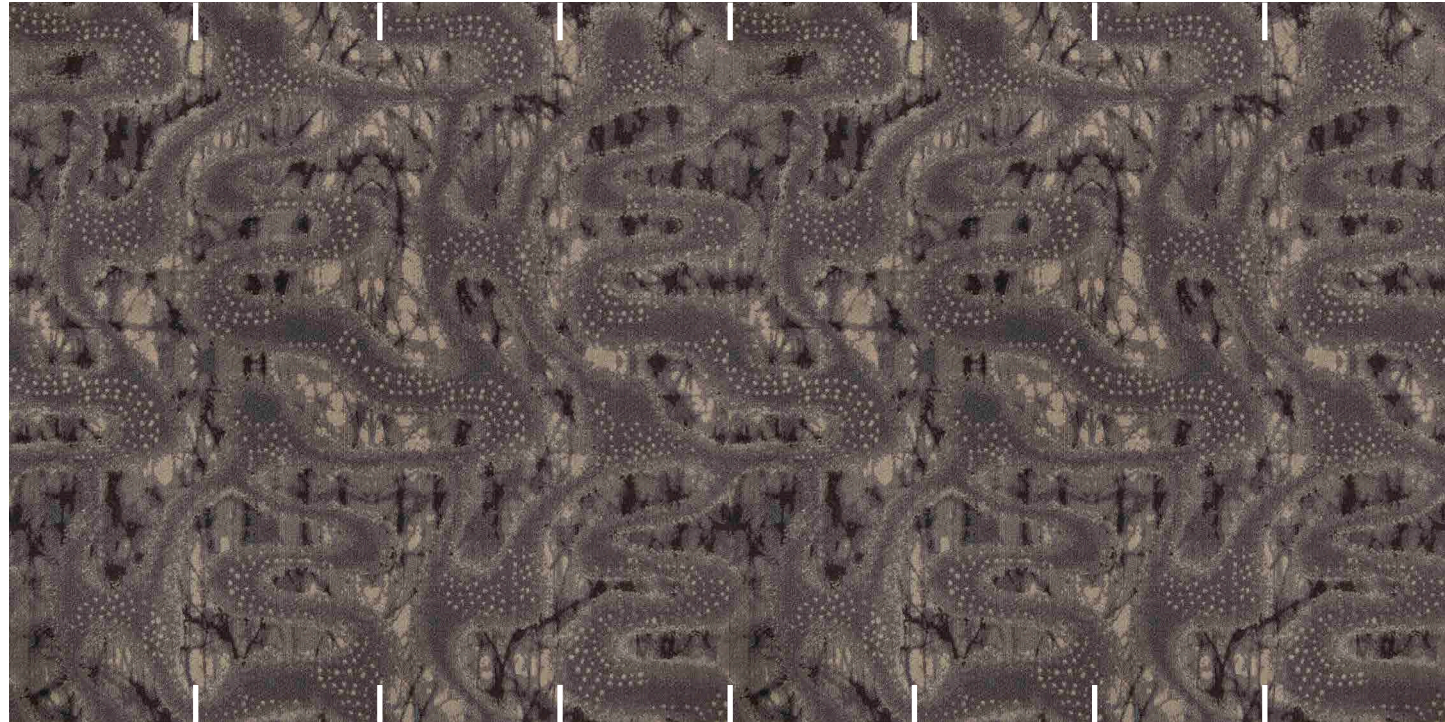


Left: Sandhills | Passage in Spinifex | PAS62-5 | 1m x 1m Tile | Monolithic Installation
Right: Karona 3 | Eclipse in Solar | ECL133 | Quarter-Turn Installation

Passage

MULTI PLANK REPEAT: 25CM X 1M
4 PLANK PATTERN | 8 PLANKS SHOWN

MODULAR PLANK



PAS174-4
POWDERED ROCK



PAS70-82
LILLY PILLY



PAS212-207
PAPER BARK



PAS176-96
WATTLE



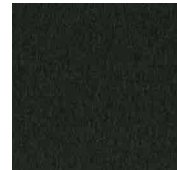
PAS33-10
RED EARTH



PAS62-5
SPINIFEX

COORDINATE DESIGNS & COLOURWAYS

KARONA 3



ECL133
SOLAR

COMFORTABLE
CONCRETE



LDB27-207
DUST

BEYOND
CHROMA



CMA21
BUFF

METRO
PARK WOOD



BEH21-121
GROVE

SANDHILLS



RNF174-4
POWDERED
ROCK

SANDHILLS



RNF212-207
PAPER BARK



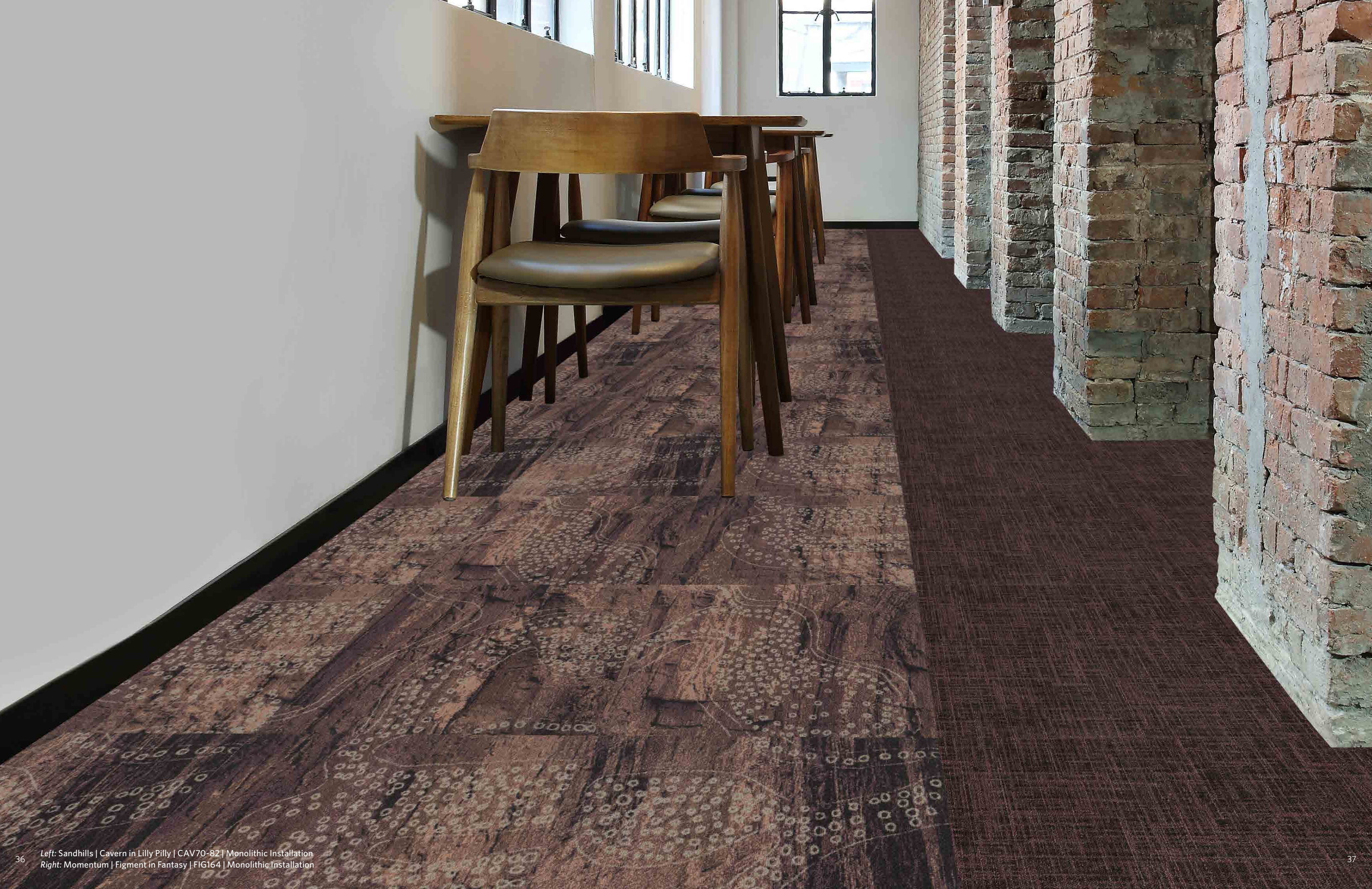


Cavern

Cavern is emblematic of the dramatic chasms that split the weathered rocky faces of the desert, unearthing plummeting cracks deep into the landscape.

The raw rock forms are overlaid with free flowing dotted linework, creating evocative forms that mirror the shrubs and grasses that grow within the crevices of the rock face. These contrasting elements reflect the harmonious co-existence of opposing forces in the natural world.

The bold and elongated features of Cavern are fused with organic and unconstrained elements bringing the sublime sense of rhythm and solidity to your interior space.



Left: Sandhills | Cavern in Lilly Pilly | CAV70-82 | Monolithic Installation
Right: Momentum | Figment in Fantasy | FIG164 | Monolithic Installation



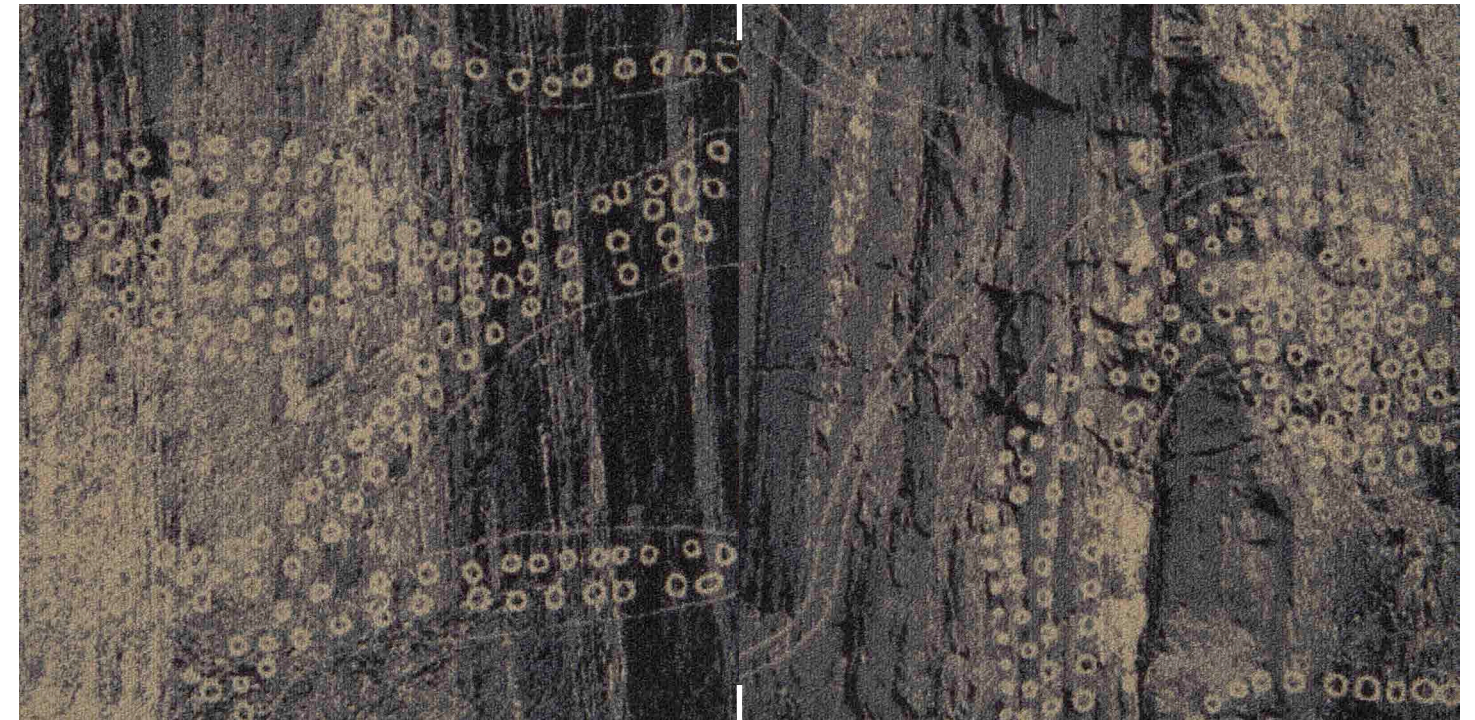
Cavern in Spinifex | CAV62-5 | Monolithic Installation



Cavern

MULTI TILE REPEAT: 50CM X 2M
4 TILE PATTERN | 2 TILES SHOWN

MODULAR TILE



CAV174-4 | POWDERED ROCK



CAV70-82
LILLY PILLY



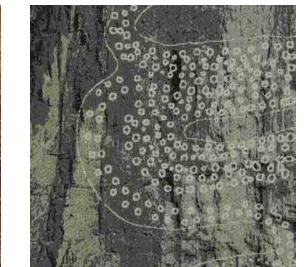
CAV212-207
PAPER BARK



CAV176-96
WATTLE



CAV 33-10
RED EARTH



CAV62-5
SPINIFEX

COORDINATE DESIGNS & COLOURWAYS

MOMENTUM



FIG164
FANTASY

COMFORTABLE
CONCRETE



UDR133-13-263
SLATE BLUSH

COLOUR
CONNECT



LNK17
CINNAMON
SUGAR

DANXIA



PLA146-135-119 |
QUARTZ

METRO
PARK STONE



PLC144
SCORING

METRO
PARK WOOD



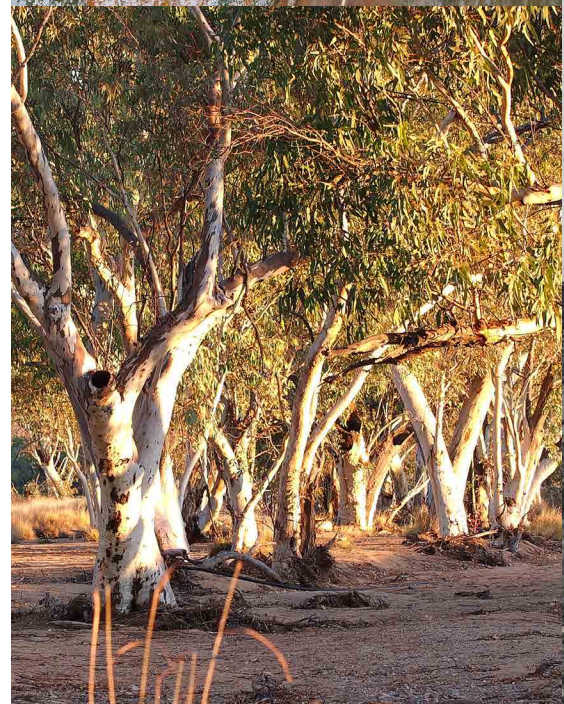
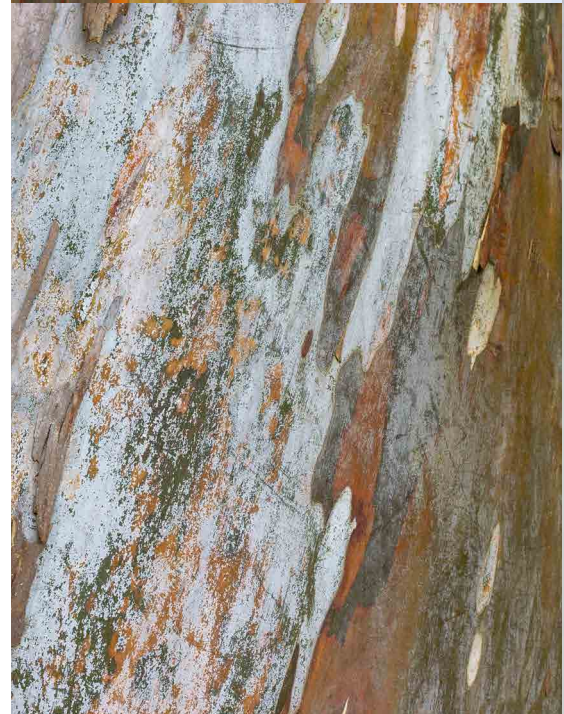
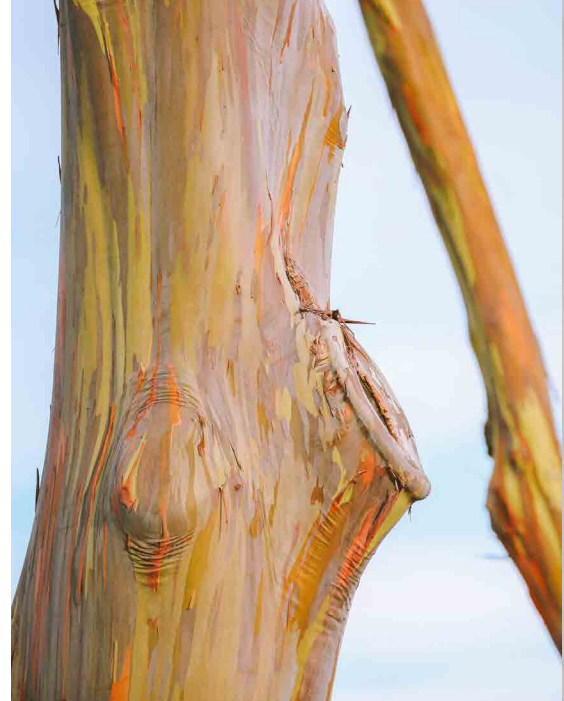
PKK121-204
DEW

Rainforest

Golden streams of sunlight cast lineal forms along the pathway, which become dappled by leafy shadows, drifting you through a dream-like landscape which is fluid and ever-changing.

The Rainforest design epitomises the natural bush environment and the juxtaposition of light and dark forms as the sunlight penetrates through the trees. It represents the light tones of the gum trees and the darker tones of shadows as they appear on the bark of majestic tree trunks, with subtle depths of scribbly bark that texturises the design.

Rainforest's essence creates a sense of movement and directional quality, visually elongating and drawing you through a journey within your interior spaces. The versatility of Rainforest's fluid lineal forms can be transformed into a dramatic pattern-scape for a bold and unexpected feature in your favourite spaces.







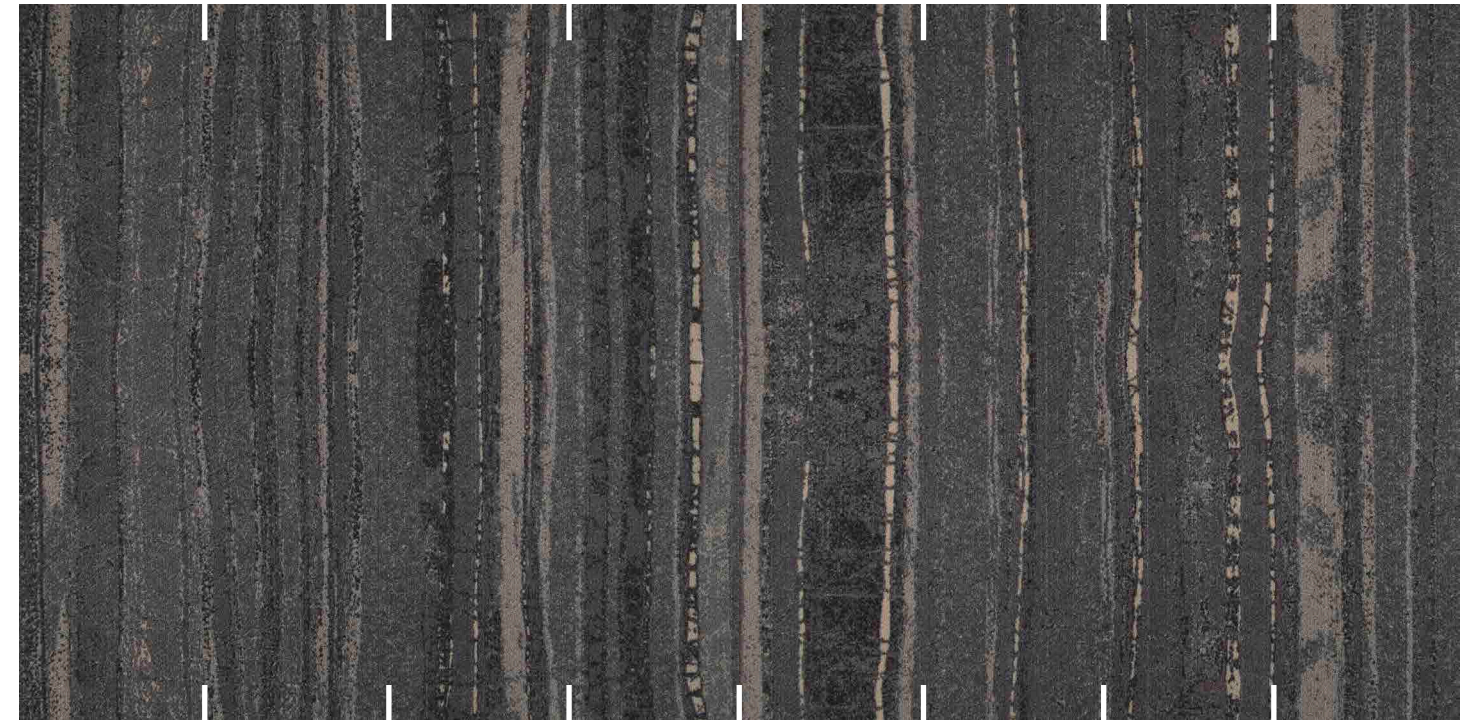
Rainforest in Spinifex | RNF62-5 | 25cm x 1m Plank | Ashlar (Vertical) Installation



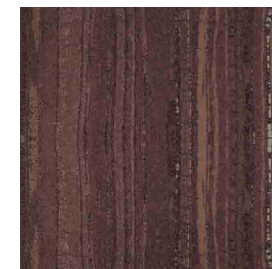
Rainforest

MULTI PLANK REPEAT: 25CM X 4M
16 PLANK PATTERN | 8 PLANKS SHOWN

MODULAR PLANK



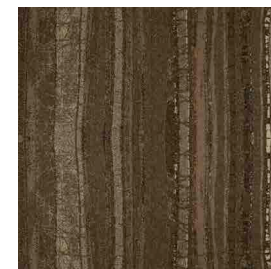
RNF174-4 | POWDERED ROCK



RNF70-82
LILLY PILLY



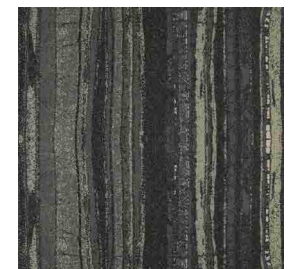
RNF212-207
PAPER BARK



RNF176-96
WATTLE



RNF33-10
RED EARTH



RNF62-5
SPINIFEX

COORDINATE DESIGNS & COLOURWAYS



BTS119-154
FUSION



UDR133-13-207
SLATE GRAY



SKO118
ASH CLOUD



LNx21
LINEN WEAVE

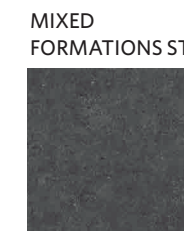
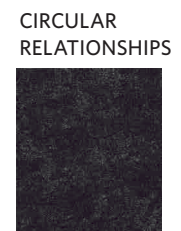


FIG13
JET



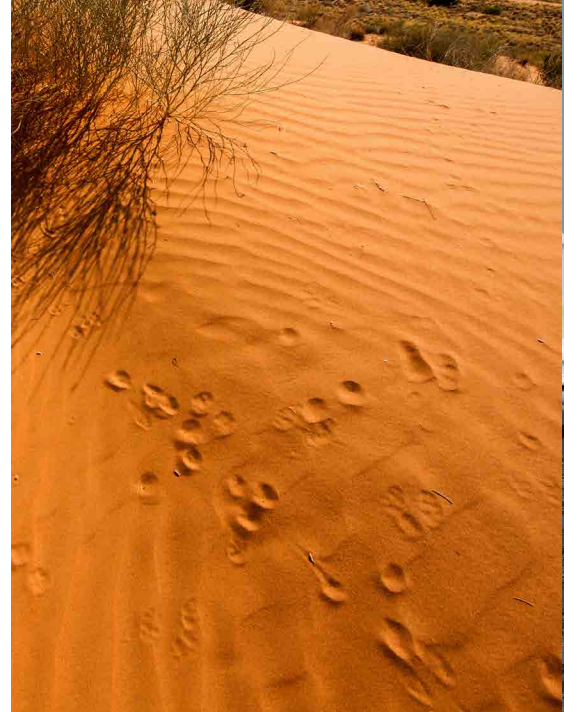
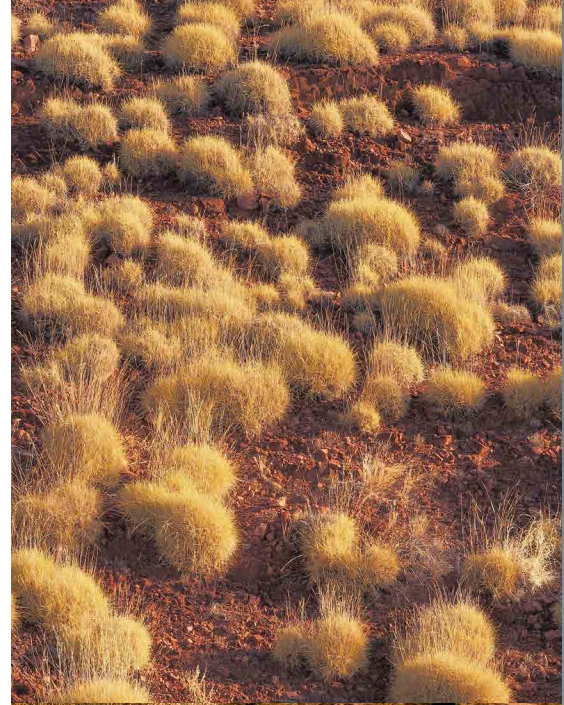
CRF154-133-215
OYSTER

Bush Seed

Bush Seed celebrates the ever-changing movement of the landscape as it interacts with the seasons. This design is a concentration of irregular and random fine dot patterns, captured from the Sandhills design, unveiling the reflection of organic and free flowing pathways that appear in the landscape.

Multidimensional and delightfully unexpected in its arrangement, Bush Seed represents a combination of speckled impressions made by water droplets, the markings made as animals dance across hot desert sand, and seedpods scattered over the earth.

The asymmetrical circles reflect the subtle imagery of footprints created in the natural landscape and mimic the organic and morphing forms created when canting wax on Batik textiles. Like the expanses of the desert landscape, Bush Seed provides the ground plane to anchor a variety of interior design elements whilst remaining mysterious and captivating through its detailed arrangement.







Circular Insert: Sandhills | Bush Seed in Red Earth | BSE33-10 | Monolithic Installation
Field: Beyond Chroma in Sand | CMA14 | Monolithic Installation



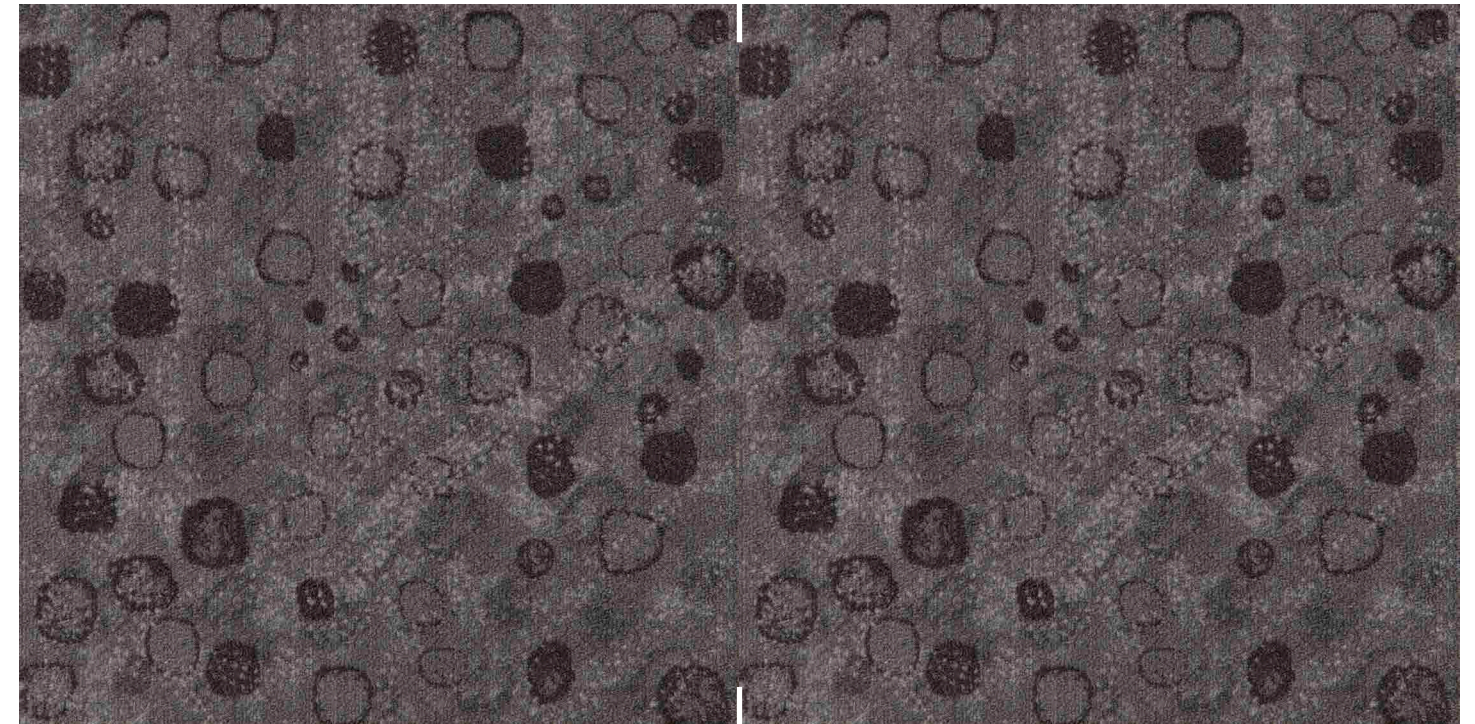
Bush Seed in Wattle | BSE176-96 | Monolithic Installation 55



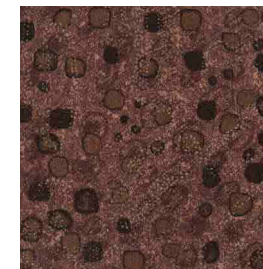
Bush Seed

MULTI TILE REPEAT: 50CM X 3M
6 TILE PATTERN | 2 TILES SHOWN

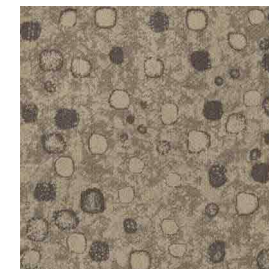
MODULAR TILE



BSE174-4 | POWDERED ROCK



BSE70-82
LILLY PILLY



BSE212-207
PAPER BARK



BSE176-96
WATTLE



BSE33-10
RED EARTH



BSE62-5
SPINIFEX

COORDINATE DESIGNS & COLOURWAYS

MAJOR
FREQUENCY:
ONE



VBN27-67
DISRUPT

METRO PARK
STONE



PLC67
POLISH

METRO PARK
WOOD



SHN145
MOOSE

NORDIC STORIES



IGD122-120
SPIRITLAND

NORDIC STORIES



IGD120-178
ORES

BEYOND
CHROMA



CMA14
SAND



It takes humans to protect humanity.

Make changes to end climate change.

Design a better future.

M/PACT™
CARBON NEUTRAL PROGRAM

CLIMATE CHANGE IS ONE OF THE GREATEST THREATS FACING HUMANITY, AND WE ARE ALL RESPONSIBLE.

That's why Milliken Floor Covering launched the **M/PACT™** carbon neutral program. Today, our carpet, LVT and entrance flooring tiles are carbon neutral everywhere in the world.

M/PACT carbon neutral products offset the raw materials and manufacturing carbon footprint* by using 3rd party Verified Carbon Standard Credits that support renewable energy and carbon reduction technologies to help fight climate change. When you choose M/PACT products, you can be sure your choice is carbon neutral.



SCAN TO LEARN MORE ABOUT OUR CARBON NEUTRAL PROGRAM
M/PACT™

M/PACT™
CARBON NEUTRAL PROGRAM

Investment

Today we invest through renewable energy credits, verified carbon offsets, and installing solar power at our Sydney manufacturing facility. We also continue to invest in more efficient manufacturing technologies and in local supply chains.

Materials

We believe material health is essential to enable circularity. The use of materials that don't contain harmful chemicals provides a critical pathway to end-of-life product recycling. Our carpet, LVT and entrance flooring tiles are recyclable.

Dematerialisation

We continue to support the advancement of a circular economy - one that uses less new raw materials and creates less waste. For example, we have created a portfolio of carpet tiles that use less raw material, reducing embodied carbon. We will continue to challenge ourselves and our supply chains to extend innovation in new technologies for dematerialisation.

Manufacturing

We leverage our global manufacturing and local supply chains to minimise carbon emissions. More efficient manufacturing and distribution not only reduces our global carbon footprint, it also has a direct positive impact on the communities we call home.

Wellness

Climate change directly impacts human health and wellness. Pollution. Natural disasters. Droughts. As a founding member of the Well Living Lab and a Well Portfolio Member, we aspire to design products that enhance well-being and quality of life of indoor spaces.

We will continue to do more to lower our carbon footprint.

The M/PACT™ program is long-term, because the fight to stop climate change will be a long one. As a global manufacturing company, we set 2025 goals that align with the United Nations Sustainable Development Goals. We push ourselves to meet our targets on Planet, Product, and People, including a 25% reduction in indexed greenhouse emissions by 2025. These 2025 goals are a benchmark for us to achieve more, faster. We encourage you to specify our carbon neutral products for all of your projects to ensure the climate change journey continues.

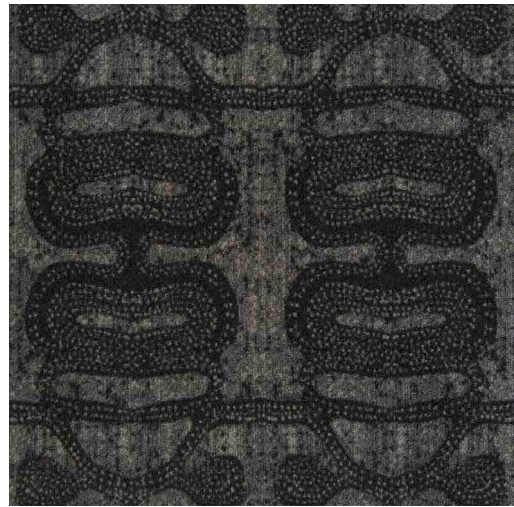
Together, we can make a positive **M/PACT™** on the world for generations.

* As calculated and verified scope A1-3 GWP through a ISO14025/ISO14040 compliant LCA and published in third party EPDs.

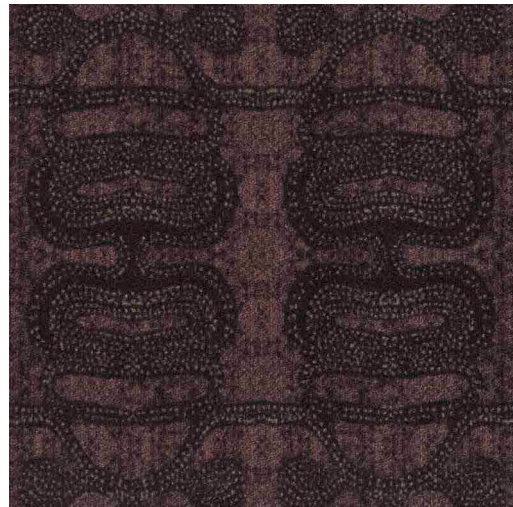
Milliken™

SANDHILLS

SINGLE TILE REPEAT: 1M X 1M | 1 TILE PATTERN



SAN174-4
POWDERED ROCK



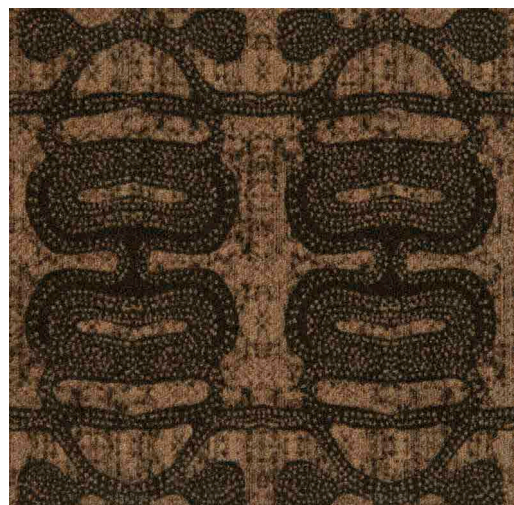
SAN70-82
LILLY PILLY



SAN212-207
PAPER BARK



SAN33-10
RED EARTH



SAN176-96
WATTLE

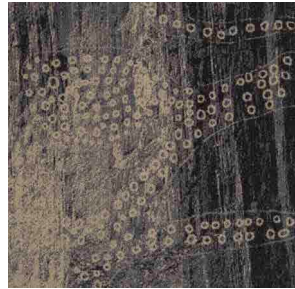


SAN62-5
SPINIFEX



CAVERN

MULTI TILE REPEAT: 50CM X 50CM | 4 TILE PATTERN | 1 TILE SHOWN



CAV174-4
POWDERED ROCK



CAV70-82
LILLY PILLY



CAV176-96
WATTLE



CAV212-207
PAPER BARK



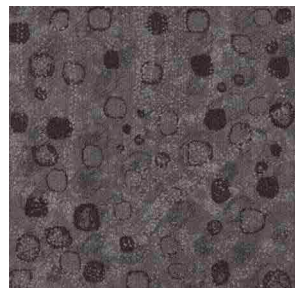
CAV 33-10
RED EARTH



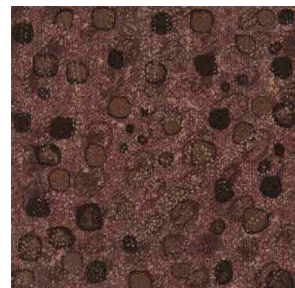
CAV62-5
SPINIFEX

BUSH SEED

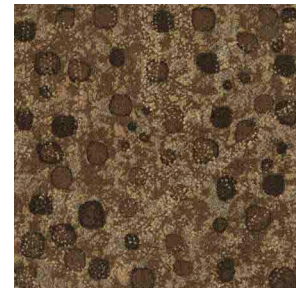
MULTI TILE REPEAT: 50CM X 50CM | 6 TILE PATTERN | 1 TILE SHOWN



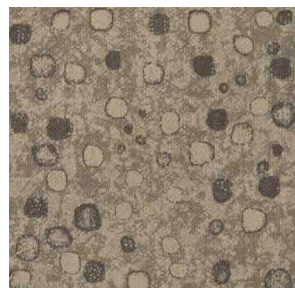
BSE174-4
POWDERED ROCK



BSE70-82
LILLY PILLY



BSE176-96
WATTLE



BSE212-207
PAPER BARK



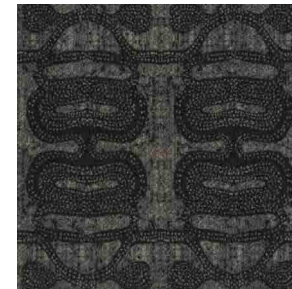
BSE33-10
RED EARTH



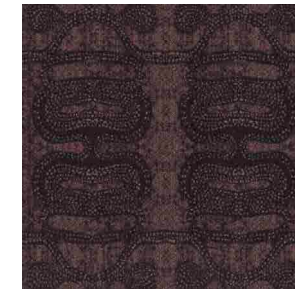
BSE62-5
SPINIFEX

SANDHILLS

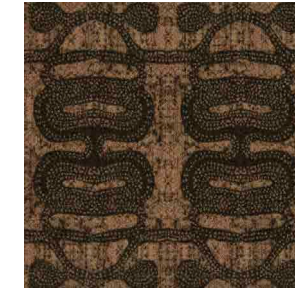
SINGLE TILE REPEAT: 50CM X 50CM | 1 TILE PATTERN | 1 TILE SHOWN



SAH174-4
POWDERED ROCK



SAH70-82
LILLY PILLY



SAH176-96
WATTLE



SAH212-207
PAPER BARK



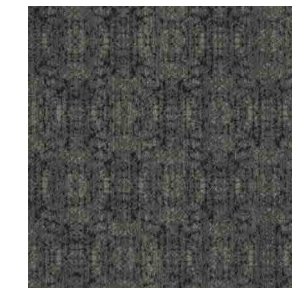
SAH33-10
RED EARTH



SAH62-5
SPINIFEX

SAFARI

SINGLE TILE REPEAT: 50CM X 50CM | 1 TILE PATTERN | 1 TILE SHOWN



SAF174-4
POWDERED ROCK



SAF70-82
LILLY PILLY



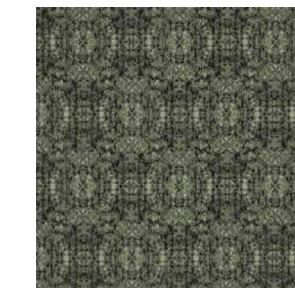
SAF176-96
WATTLE



SAF212-207
PAPER BARK



SAF33-10
RED EARTH



SAF62-5
SPINIFEX

RAINFOREST

MULTI PLANK REPEAT: 1M X 4M
16 PLANK PATTERN REPEAT | 1 PLANK SHOWN



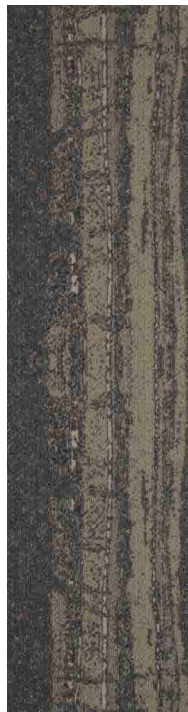
RNF174-4
POWDERED ROCK



RNF70-82
LILLY PILLY



RNF176-96
WATTLE



RNF212-207
PAPER BARK



RNF33-10
RED EARTH



RNF62-5
SPINIFEX



PASSAGE

MULTI PLANK REPEAT: 1M X 1M
4 PLANK PATTERN REPEAT | 1 PLANK SHOWN



PAS174-4
POWDERED ROCK



PAS70-82
LILLY PILLY



PAS176-96
WATTLE



PAS212-207
PAPER BARK



PAS33-10
RED EARTH



PAS62-5
SPINIFEX





do you

in
today, it's about
not what you
vision of success a

SANDHILLS

Sandhills | Safari | Passage | Cavern | Rainforest | Bush Seed

SPECIFICATION



When you choose M/PACT™ products, you can be sure your choice is carbon neutral. M/PACT™ carbon neutral products offset the raw materials and manufacturing carbon footprint* by using 3rd party Verified Carbon Standard Credits that support renewable energy and carbon reduction technologies to help fight climate change.

*as calculated and verified through a ISO14025/ISO14040 compliant LCA and published in third party EPD.

Standard Backing

Cushion Backing

WellBAC® Comfort (PVC FREE) (Non-Reactive Cushion Backing)

Acoustic Value

Noise Reduction Coefficient - NRC ≥ 0.25

(Exceeds standard acoustic requirements of the Carpet Institute)

Impact Sound Pressure Level - Ln,w ≤ 47dB (Well below the BCA limit of 62dB)

Concrete Slab Moisture Mitigation

Site-Related Solutions (SRS). Milliken Cushion backed tile + Non-Reactive Standard adhesive means installation 60 days after a new concrete pour, fully warranted no moisture testing required. Refer millikenfloors.com.au

Construction	Tufted, Textured Loop	Nominal Total Thickness	8.4mm
Tile Size	50cmx50cm, 25cmx1r	Nominal Total Weight	90.3 oz/yd ² (3,062 g/m ²)
Yarn Type	Milliken Certified 100%	Nominal Pile Thickness	2.8mm
Stain Resist Soil Release	StainSmart®	Flammability (Radiant Panel Test)	CHF/CRF = 6.3kW/m ² , Smoke value = 136%.min
Antimicrobial	AlphaSan® Protection	Lightfastness (AATCC 16E)	≥ 4.0 at 80 Hours
Dye Method	PrintWorks™	Static Electricity	≤ 3.5KV
Gauge	1/10	(AATCC-134) 20% R.H., 70°F	
Stitches Per Inch	14.4	Indoor Air Quality	≤ 0.5mg/m ³ (GLP0793)
Tufts	144/in ² (2,230/100cr)	CRI Green Label Plus™	
Recyclable	100%	VOC	Pass (ISO 10580:2010)
		ACCS Grading	CMD 2*, REHD1 5*, Suitable for stairs
		Environmental	ECS Grading - Level 4 (Certificate No. 20145) Declare - 3rd Party Verified RED LIST FREE Cradle to Cradle - Silver Carbon Neutral

Recommended Installation Method(s)

Sandhills, Cavern, Bush Seed: Monolithic
Passage, Rainforest: Ashlar (Vertical) | Herringbone

Recommended Area of Use Warranties

Sandhills Rug: Monolithic
Commercial Extra Heavy Duty
15-year Wear Warranty
15-year Dimensional Stability Warranty
15-year Anti-Static Warranty
15-year Castor Chair Wear Warranty



Alliance
Founding
Member



Declare.

Milliken

Australia:
Toll Free: 1800 668 372

New Zealand:
Toll Free: 0800 668 372

www.millikenfloors.com.au
(Australia & New Zealand)

This WellBAC® cushion-back carpet tile product is covered by one or more patents, published applications and/or patents pending. Specifications are subject to normal manufacturing tolerances and may be changed without prior notice. Copies of actual test results are available upon request.