The image features three wooden chairs with woven seats, arranged on a floor with a complex geometric pattern. The pattern consists of various shades of grey, yellow, and white, forming abstract shapes and lines. The chairs are positioned in a triangular arrangement, with one at the top left, one at the top right, and one at the bottom center. A dark grey horizontal bar is overlaid on the right side of the image, containing the text 'LUMENOLOGY' and the 'Milliken' logo.

LUMENOLOGY

Milliken


LUMENOLOGY

We believe spaces can be bright, welcoming environments with the simple introduction of colour, texture and pattern to the flooring design. The Lumenology collection brings light and energy into all spaces with its playful patterns and diverse colour palette.


Reflective in Iridescent (LRF6-126) and Umbra (LRF6) | Ashlar (Vertical) Installation



REFLECTIVE



LIGHT WASH



LIGHT STITCH

BRIGHT IMPRESSIONS CREATING MINDFUL SPACES

With anchoring neutrals, harmonising textures, and inspiring colour, Lumenology LVT allows you to reimagine how spaces are defined. Create endless expressions of colour coordination with our Reflective, Light Wash, and Light Stitch pattern options.

DESIGNED TO COORDINATE

The Lumenology Collection offers a wide spectrum of pre-built colour sets. Each colourway presents its own unique opportunity for coordinating colour and texture.

Introducing the grey palette, exuding a sense of calm and a fresh and contemporary look.



LIGHT WASH
LLW209 FLASH



LIGHT WASH
LLW257 LUSTERING



LIGHT STITCH
LLS257 TRANSLUCENT



LIGHT WASH
LLW118 SHADE



LIGHT STITCH
LLS144 REVEAL



LIGHT STITCH
LLS13 DIM



REFLECTIVE
LRF217-205 CLEAR



LIGHT STITCH
LLS118 ASPECT



REFLECTIVE
LRF209-144 SHINE



REFLECTIVE
LRF6-154 UMBRA

Grey





Light Stitch in Translucent (LLS257), Reveal (LLS144), Dim (LLS13) and Reflective in Umbra (LRF6-154) | Herringbone Installation

EXPLORE COORDINATE MOOD BOARDS

Grey



LIGHT STITCH
LLS257 TRANSLUCENT

REFLECTIVE
LRF217-205 CLEAR



LIGHT STITCH
LLS257 TRANSLUCENT

LIGHT WASH
LLW257 LUSTERING



LIGHT STITCH
LLS144 REVEAL

REFLECTIVE
LRF209-144 SHINE



LIGHT WASH
LLW209 FLASH

REFLECTIVE
LRF209-144 SHINE



LIGHT WASH
LLW118 SHADE

REFLECTIVE
LRF6-154 UMBRA



REFLECTIVE
LRF217-205 CLEAR

REFLECTIVE
LRF209-144 SHINE

REFLECTIVE
LRF6-154 UMBRA



LIGHT STITCH
LLS144 REVEAL

LIGHT STITCH
LLS13 DIM

REFLECTIVE
LRF6-154 UMBRA



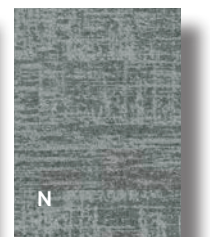
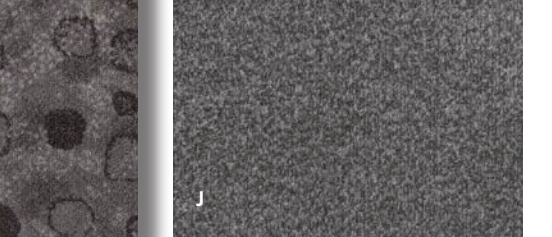
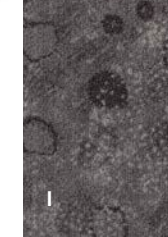
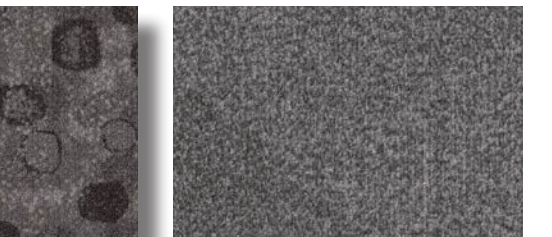
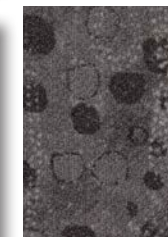
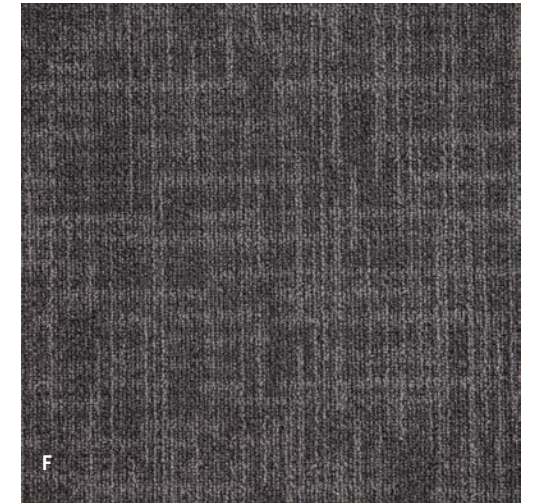
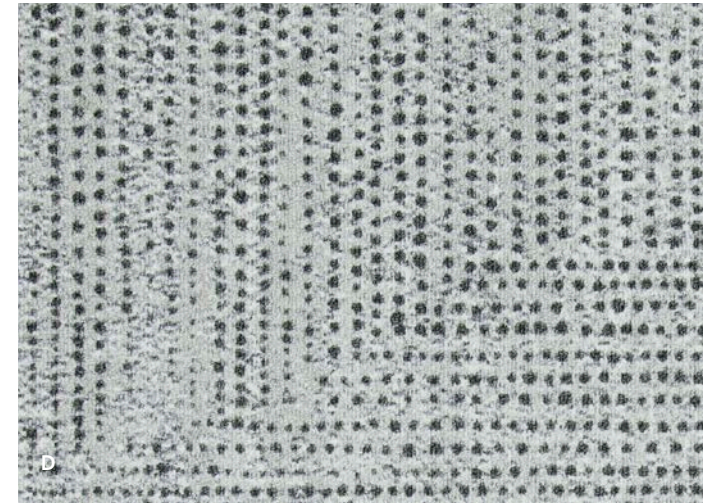
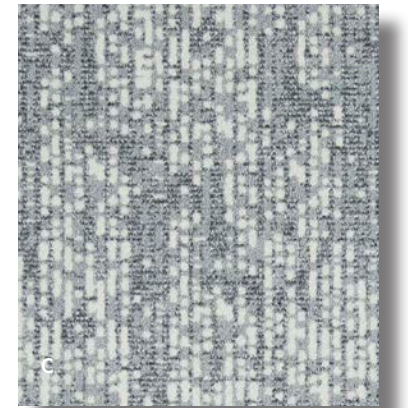
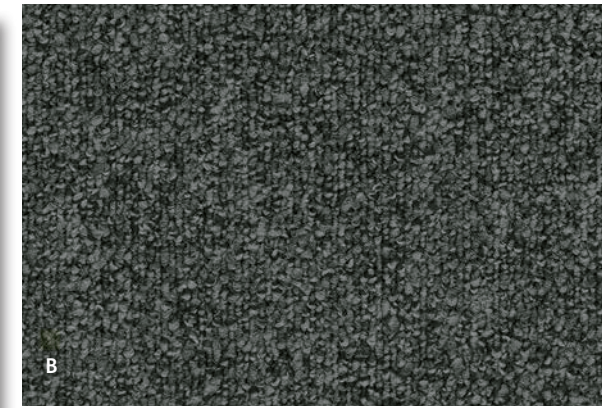
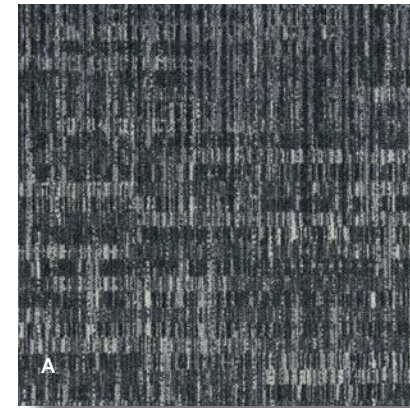
LIGHT STITCH
LLS118 ASPECT

LIGHT STITCH
LLS13 DIM

LIGHT STITCH
LLS144 REVEAL

Right page:

- A. Exceed | Action
ACT13 Smokey Black
- B. Karona 3 | Eclipse
ECL27-152 Frost Bite
- C. Water Yuludarla | Guluuna
GUL145-27 Ash
- D. Water Yuludarla | Yildaan
YIL145-27 Ash
- E. Nordic Stories | Isograd
IGD13-119 Esker
- F. Distinct Forms | Construction
COS79-152 Symmetry Grey
- G. Lightbox
LBX248-48-153 Aqua/Ink Neutral
- H. Exceed | Buzz
BUZ6 Ash Grey
- I. Sandhills | Bush Seed
BSE174-4 Powdered Rock
- J. Beyond Chroma | Chroma
CMA173 Mink
- K. Beyond Chroma | Chroma
CMA118 Charcoal
- L. Sandhills | Rainforest
RNF212-207 Paper Bark
- M. Arctic Survey | Shackleton
SHK108-13 Avalanche
- N. Major Frequency: One | Distortion
DTN209-118 Tremor
- O. Colour Compositions
CCM180 Cobble



DESIGNED TO **COORDINATE**

The Lumenology Collection offers a wide spectrum of pre-built colour sets. Each colourway presents its own unique opportunity for coordinating colour and texture.

Introducing the yellow palette, capturing joy and happiness, energising an interior space in an uplifting and welcoming way.



LIGHT WASH
LLW209-189 LUCENT



LIGHT STITCH
LLS135 SUNUP



LIGHT WASH
LLW231 BOLT



LIGHT STITCH
LLS190 BLAZE



LIGHT STITCH
LLS231 RAY



REFLECTIVE
LRF13-12 SHAFT

Yellow



Left: Light Wash in Lucent (LLW209-189) and Reflective in Shaft (LRF13-12) | Herringbone Installation
Right: Light Wash in Bolt | LLW231 | Ashlar (Vertical) Installation

EXPLORE COORDINATE MOOD BOARDS

Yellow



LIGHT WASH
LLS257 TRANSLUCENT

REFLECTIVE
LRF217-205 CLEAR



LIGHT WASH
LLW209-189 LUCENT

LIGHT WASH
LLW231 BOLT



LIGHT STITCH
LLS135 SUNUP

LIGHT STITCH
LLS257 TRANSLUCENT



REFLECTIVE
LRF13-12 SHAFT

LIGHT WASH
LLW231 BOLT



LIGHT WASH
LLW231 BOLT

LIGHT WASH
LLW209-189 LUCENT



REFLECTIVE
LRF217-205 CLEAR

REFLECTIVE
LRF209-144 SHINE

REFLECTIVE
LRF13-12 SHAFT



LIGHT WASH
LLW209 FLASH

LIGHT WASH
LLW209-189 LUCENT

LIGHT STITCH
LLS135 SUNUP



LIGHT WASH
LLW231 BOLT

LIGHT STITCH
LLS135 SUNUP

LIGHT STITCH
LLS190 BLAZE

- Right page:
- A. Amplifier | Beats
BTS154-180 Pitch
 - B. Velvet | Velvet Stripe
CV33-98 Tangerine
 - C. Colour Compositions
CCM154-33 Abrasion Hydrolysis
 - D. Arctic Survey | Isotherm
IST111-134 Midnight Sun
 - E. Water Yuludarla | Guunu
GUU33-59 Ochre
 - F. Distinct Forms | Construction
COS79-152 Symmetry Grey
 - G. Live Circuit | Current
CUR134-138 Charge with Bolt
 - H. Colour Compositions
CCM33 Hydrolysis
 - I. Beyond Chroma | Chroma
CMA165 Smoke
 - J. Ripple
RIP13-144 Pebble
 - K. Lightbox
LBX144-128-5 Rust/Orange Tint
 - L. Patina Vibes
PAT33-118-108 Rust Timber
 - M. Circular Relationships | Dunes
CRD180-13-215 Albatross



DESIGNED TO **COORDINATE**

The Lumenology Collection offers a wide spectrum of pre-built colour sets. Each colourway presents its own unique opportunity for coordinating colour and texture.

Introducing the red palette, expressing warmth and raising energy levels, bringing depth and contrast within an interior environment.



LIGHT WASH
LLW209-168 DAZZLING



LIGHT STITCH
LLS168 WILDFIRE



LIGHT WASH
LLW168 FLAME



LIGHT STITCH
LLS60 DEGREE



LIGHT STITCH
LLS261 PHASE



REFLECTIVE
LRF6-168 TORCH

Red



Light Wash in Dazzling (LLW209-168) and Flame (LLW168) and Reflective in Torch (LRF6-168) and Umbra (LRF6-154) | Herringbone Installation



Left to Right: Light Stitch in Dim (LLS13) and Phase (LLS261) | Ashlar (Vertical) Installation

EXPLORE COORDINATE MOOD BOARDS

Red



LIGHT WASH
LLW209-168 DAZZLING

LIGHT STITCH
LLS261 PHASE



LIGHT STITCH
LLS168 WILDFIRE

REFLECTIVE
LRF6-168 TORCH



REFLECTIVE
LRF217-205 CLEAR

LIGHT STITCH
LLS60 DEGREE



LIGHT STITCH
LLS144 REVEAL

LIGHT WASH
LLW168 FLAME



LIGHT WASH
LLW209 FLASH

LIGHT WASH
LLW209-168 DAZZLING



LIGHT STITCH
LLS144 REVEAL

REFLECTIVE
LRF6-154 UMBRA

REFLECTIVE
LRF6-168 TORCH



LIGHT STITCH
LLS261 PHASE

LIGHT STITCH
LLS168 WILDFIRE

LIGHT STITCH
LLS60 DEGREE



LIGHT WASH
LLW209-168 DAZZLING

REFLECTIVE
LRF209-144 SHINE

REFLECTIVE
LRF6-168 TORCH

Right page:

A. Topography 2.0 | Navigator
NAV13-153 Grid

B. Sandhills | Sandhills
SAH70-82 Lilly Pilly

C. Major Frequency: One | Distortion
DTN209-118 Tremor

D. Clerkenwell | Ely Place
ELP180-79-174 Unjust Judge

E. Artistic Liberties | Outspoken Tradition
OSI174-137 Opinionated

F. Comfortable Concrete | Urban Poetry
UPY154-180-151 Powder Violet

G. Colour Connect | Linx
LNX104 Pink Almond

H. Beyond Chroma | Chroma
CMA102 Auburn

I. Topography 2.0 | Regions
REG153-118 Landform

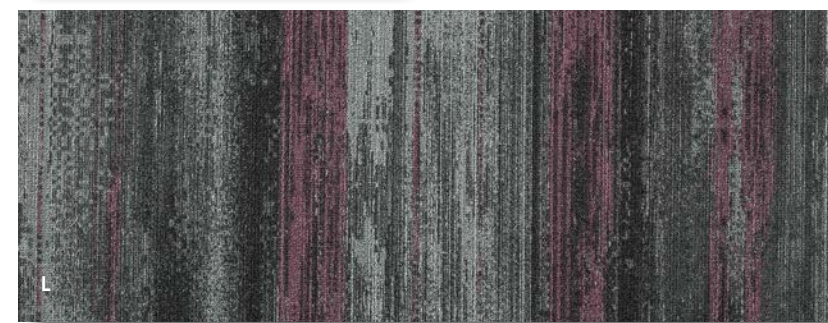
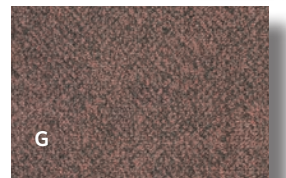
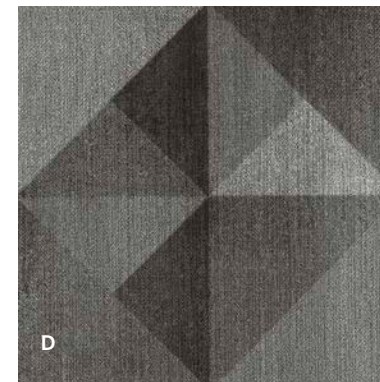
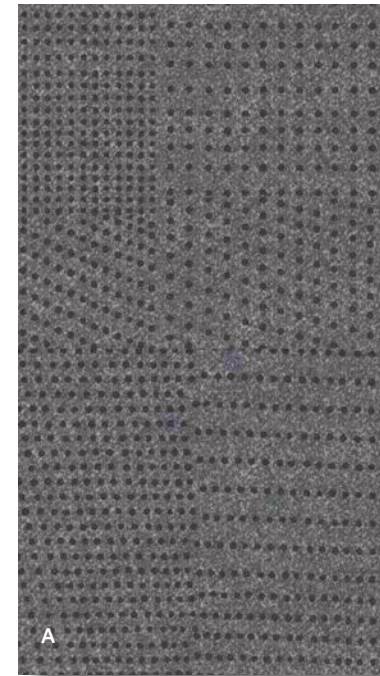
J. Nordic Stories | Hidden Plains
HDP6-108 Aeolian

K. Colour Compositions
CCM104 Quartzite

L. Colour Compositions
CCM120-104 Compression Quartzite

M. Circular Relationships | Loop Track
CRL138-133-215 Urchin

N. Velvet | Crushed Velvet
CV6-154 Matt Silver



DESIGNED TO COORDINATE

The Lumenology Collection offers a wide spectrum of pre-built colour sets. Each colourway presents its own unique opportunity for coordinating colour and texture.

Introducing the versatile blue palette that can be paired with various hues to create serene and harmonious spaces to contrasting combinations influencing perception of space and ambience.



LIGHT WASH
LLW209-126 LIGHT



LIGHT STITCH
LLS199 LAMBDA



LIGHT WASH
LLW126 FLICKER



LIGHT STITCH
LLS182 HERTZ



LIGHT STITCH
LLS159 SHEEN



REFLECTIVE
LRF6-126 IRIDESCENT

Blue



Left: Light Wash in Flicker | LLW126 | Ashlar (Vertical) Installation
Right: Reflective in Iridescent (LRF6-126) and Umbra (LRF6-154), and Light Wash in Flicker (LLW126) | Herringbone Installation

EXPLORE COORDINATE MOOD BOARDS

Blue



LIGHT STITCH
LLS257 TRANSLUCENT



REFLECTIVE
LRF6-126 IRIDESCENT



REFLECTIVE
LRF6-126 IRIDESCENT



REFLECTIVE
LRF6-154 UMBRA



LIGHT WASH
LLW209 FLASH



LIGHT WASH
LLW209-126 LIGHT



LIGHT WASH
LLW209-126 LIGHT



LIGHT WASH
LLW126 FLICKER



REFLECTIVE
LRF217-205 CLEAR



LIGHT STITCH
LLS159 SHEEN



LIGHT WASH
LLW118 SHADE



LIGHT WASH
LLW126 FLICKER



REFLECTIVE
LRF6-126 IRIDESCENT



LIGHT STITCH
LLS159 SHEEN



LIGHT STITCH
LLS199 LAMBDA



LIGHT STITCH
LLS182 HERTZ



REFLECTIVE
LRF6-126 IRIDESCENT



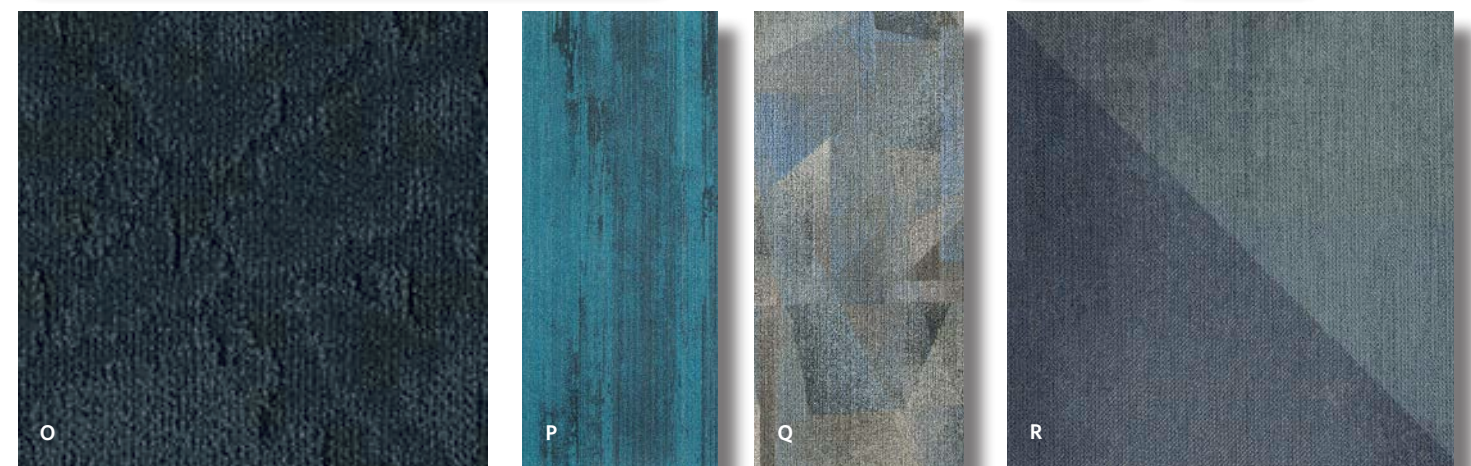
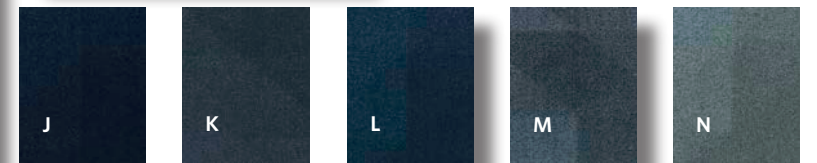
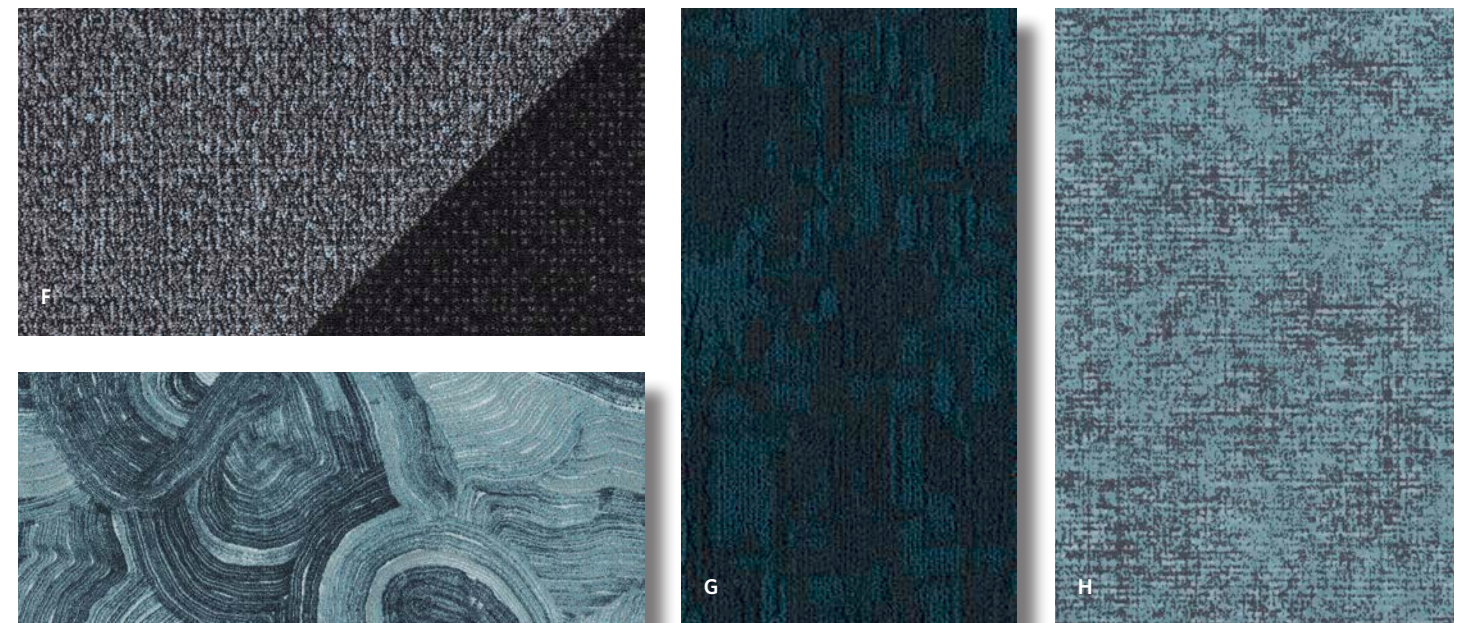
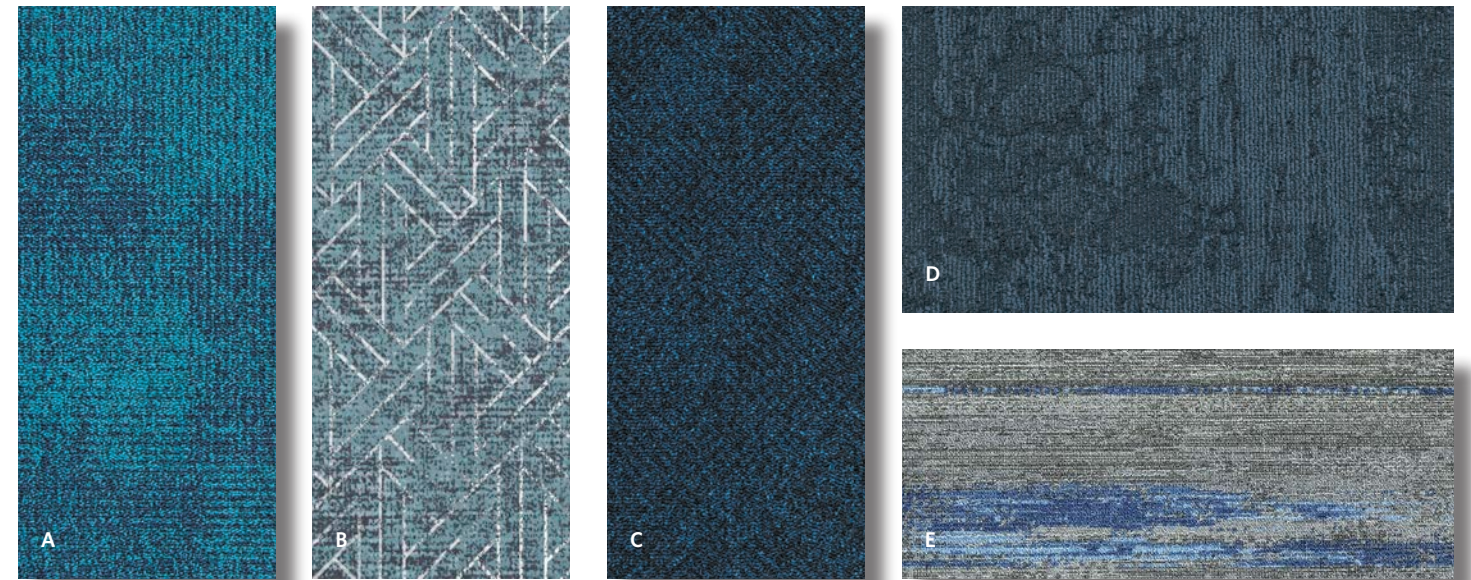
LIGHT WASH
LLW126 FLICKER



LIGHT STITCH
LLS182 HERTZ

Right page:

- A. Colour Connect | Skor SKO140-126 Tropic Blue
- B. City Nights | Geometric CNG159-182 Steel
- C. Colour Connect | Linx LNX126 Scuba Blue
- D. Arctic Survey | Isotherm IST52-126 Glacial
- E. Colour Compositions CCM153-19 Weathering Delta
- F. Danxia | Summit SUM154-119-159 Zircon
- G. Arctic Survey | Expedition EXP229-107 Sea Ice
- H. City Nights | City Nights CNI159-182 Steel
- I. Circular Relationships | Dunes CRD140-19-215 Blue Horizon
- J. Beyond Chroma | Chroma CMA228 Antarctic
- K. Beyond Chroma | Chroma CMA73 Biro Blue
- L. Beyond Chroma | Chroma CMA123 Outer Reef
- M. Beyond Chroma | Chroma CMA157 Sea Blue
- N. Beyond Chroma | Chroma CMA172 Duck Egg
- O. Arctic Survey | Shackleton SHK52-107 Polar Night
- P. Colour Compositions CCM125 Calcite
- Q. Lightbox LBX48-13-73 Aqua/Ink Bright
- R. Clerkenwell | Three Corners THC158-157-73 London Spy



DESIGNED TO COORDINATE

The Lumenology Collection offers a wide spectrum of pre-built colour sets. Each colourway presents its own unique opportunity for coordinating colour and texture.

Introducing the green palette evoking a sense of balance, vibrancy and connection to nature. It effectively brings elements of the outdoors inside, fostering a biophilic environment.



LIGHT WASH
LLW209-203 OPAQUE



LIGHT WASH
LLW203 VISION



LIGHT STITCH
LLS203 GREENLIGHT



LIGHT STITCH
LLS240 DAYBREAK



LIGHT STITCH
LLS275 VIEW



LIGHT STITCH
LLS201 SIGHT



REFLECTIVE
LRF6-203 VISTA

Green





Light Wash in Flash (LLW209), Opaque (LLW209-203) and Vision (LLW203), and Reflective in Vista (LRF6-203) | Herringbone Installation

EXPLORE COORDINATE MOOD BOARDS

Green



LIGHT STITCH
LLS257 TRANSLUCENT

REFLECTIVE
LRF6-203 VISTA



LIGHT WASH
LLW209-203 OPAQUE

LIGHT WASH
LLW203 VISION



LIGHT WASH
LLW209 FLASH

LIGHT WASH
LLW203 VISION



REFLECTIVE
LRF209-144 SHINE

REFLECTIVE
LRF6-203 VISTA



LIGHT WASH
LLW209-203 OPAQUE

REFLECTIVE
LRF6-203 VISTA



LIGHT STITCH
LLS144 REVEAL

LIGHT STITCH
LLS240 DAYBREAK

LIGHT STITCH
LLS275 VIEW



LIGHT WASH
LLW209-203 OPAQUE

LIGHT STITCH
LLS275 VIEW

LIGHT STITCH
LLS201 SIGHT



LIGHT WASH
LLW209-203 OPAQUE

LIGHT WASH
LLW203 VISION

REFLECTIVE
LRF6-203 VISTA

Right page:

A. Clerkenwell | Triangular Path
TGP118-103-141 Former Glory

B. Momentum | Mythology
MYT75 Delusion

C. Lightbox
LBX240-111-153 Melba/Sorbet Bright

D. Circular Relationships | Tussock
CRT138-133-215 Urchin

E. Lightbox
LBX103-153-141 Citrus/Green Bright

F. Lightbox
LBX14-45-28 Smoke/Olive Bright

G. Ripple
RIP13-180 Motion

H. Whale Song | Beluga
BEL28-133 Kelp Forest

I. Colour Compositions
CCM106 Meander

J. Beyond Chroma | Chroma
CMA240 Gumleaf

K. Colour Compositions
CCM180-103 Cobble Extrude

L. Whale Song | Humpback
HUM103-45 Moss

M. Beyond Chroma | Chroma
CMA141 Mamba Green

N. Clerkenwell | Circle Top View
CTV174-75-62 Gin Craze

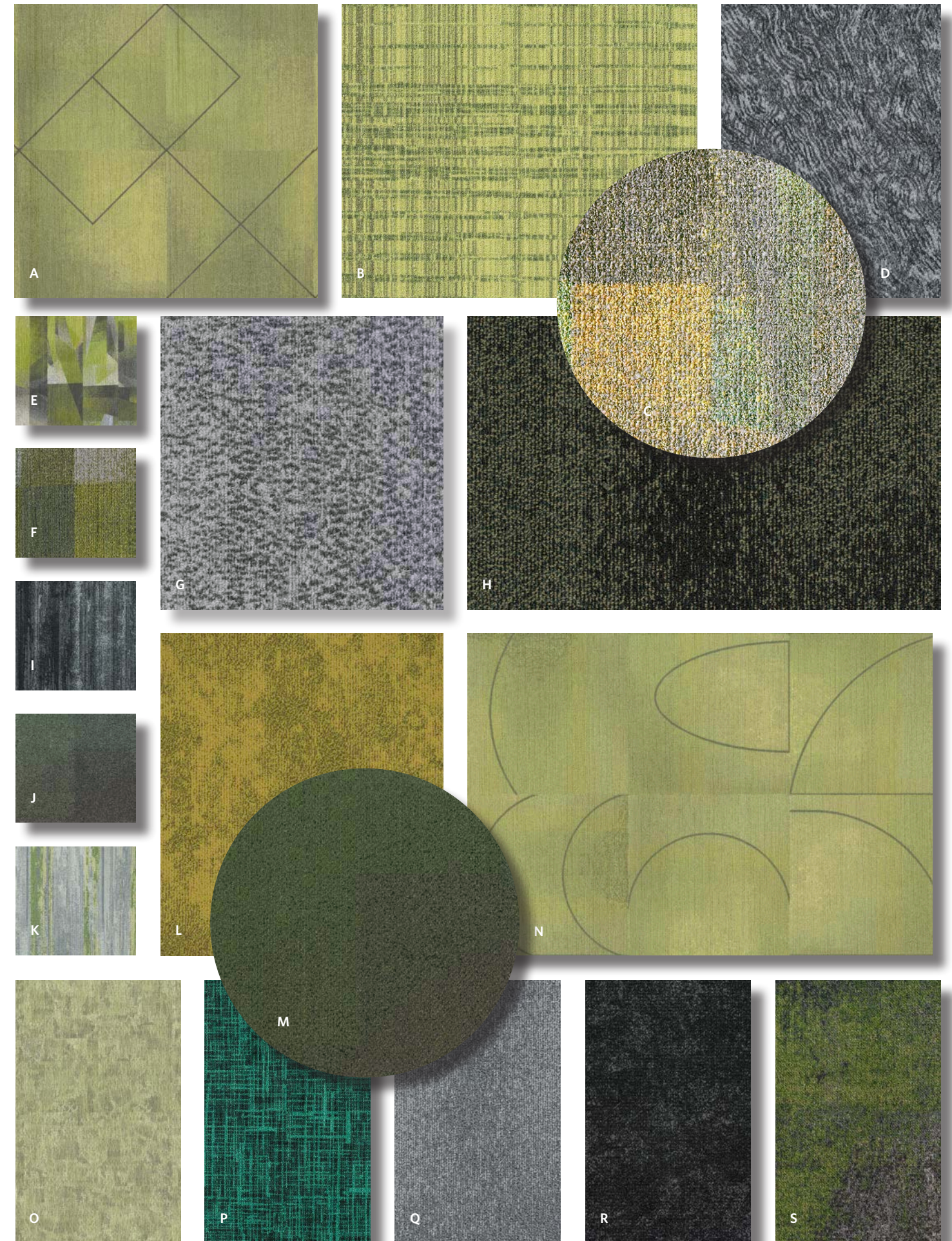
O. Poise
POI78-62 Insight

P. Momentum | Figment
FIG74 Fiction

Q. Whale Song | Beluga
BEL152-106 Breaker

R. Circular Relationships | Fossil Point
CRF154-133-215 Oyster

S. Comfortable Concrete | Urban Drama
UDR133-13-202 Slate Parrot





DIVERSITY OF SPACE

Perfectly designed for any commercial space—from workplace to education and beyond—explore endless variations with a flexibility that can go anywhere your imagination takes you.



LRF13-12
Reflective in Shaft



LLW231
Light Wash in Bolt



LLS135
Light Stitch in Sunup



Upper Left Corridor: Light Wash in Flash | LLW209 | Ashlar (Vertical) Installation
Lounge: Light Wash in Lucent (LLW209-189) and Bolt (LLW231) | Ashlar (Vertical) Installation



Left to Right: Reflective in Shine (LRF209-144), Light Stitch in Translucent (LLS257) and Reflective in Vista (LRF6-203) | Ashlar (Vertical) Installation



Field: Light Wash in Shade | LLW118 | Ashlar (Vertical) Installation
Inset: Reflective in Umbra | LRF6-154 | Ashlar (Vertical) Installation



Light Stitch in Daybreak (LLS240), Light Wash in Opaque (LLW209-203) and Reflective in Clear (LRF217-205) | Herringbone Installation

LUMENOLOGY LVT

COLOURWAY



LIGHT WASH
LLW209 FLASH



LIGHT STITCH
LLS257 TRANSLUCENT



LIGHT STITCH
LLS144 REVEAL



REFLECTIVE
LRF217-205 CLEAR



REFLECTIVE
LRF209-144 SHINE



LIGHT WASH
LLW257 LUSTERING



LIGHT WASH
LLW118 SHADE



LIGHT STITCH
LLS13 DIM



LIGHT STITCH
LLS118 ASPECT



REFLECTIVE
LRF6-154 UMBRA



LIGHT WASH
LLW209-189 LUCENT



LIGHT WASH
LLW231 BOLT



LIGHT STITCH
LLS231 RAY



LIGHT STITCH
LLS135 SUNUP



LIGHT STITCH
LLS190 BLAZE



REFLECTIVE
LRF13-12 SHAFT



LIGHT WASH
LLW209-168 DAZZLING



LIGHT WASH
LLW168 FLAME



LIGHT STITCH
LLS261 PHASE



LIGHT STITCH
LLS168 WILDFIRE



LIGHT STITCH
LLS60 DEGREE



REFLECTIVE
LRF6-168 TORCH



LIGHT WASH
LLW209-126 LIGHT



LIGHT WASH
LLW126 FLICKER



LIGHT STITCH
LLS159 SHEEN



LIGHT STITCH
LLS199 LAMBDA



LIGHT STITCH
LLS182 HERTZ



REFLECTIVE
LRF6-126 IRIDESCENT



LIGHT WASH
LLW209-203 OPAQUE



LIGHT WASH
LLW203 VISION



LIGHT STITCH
LLS203 GREENLIGHT



LIGHT STITCH
LLS240 DAYBREAK



LIGHT STITCH
LLS275 VIEW



LIGHT STITCH
LLS201 SIGHT



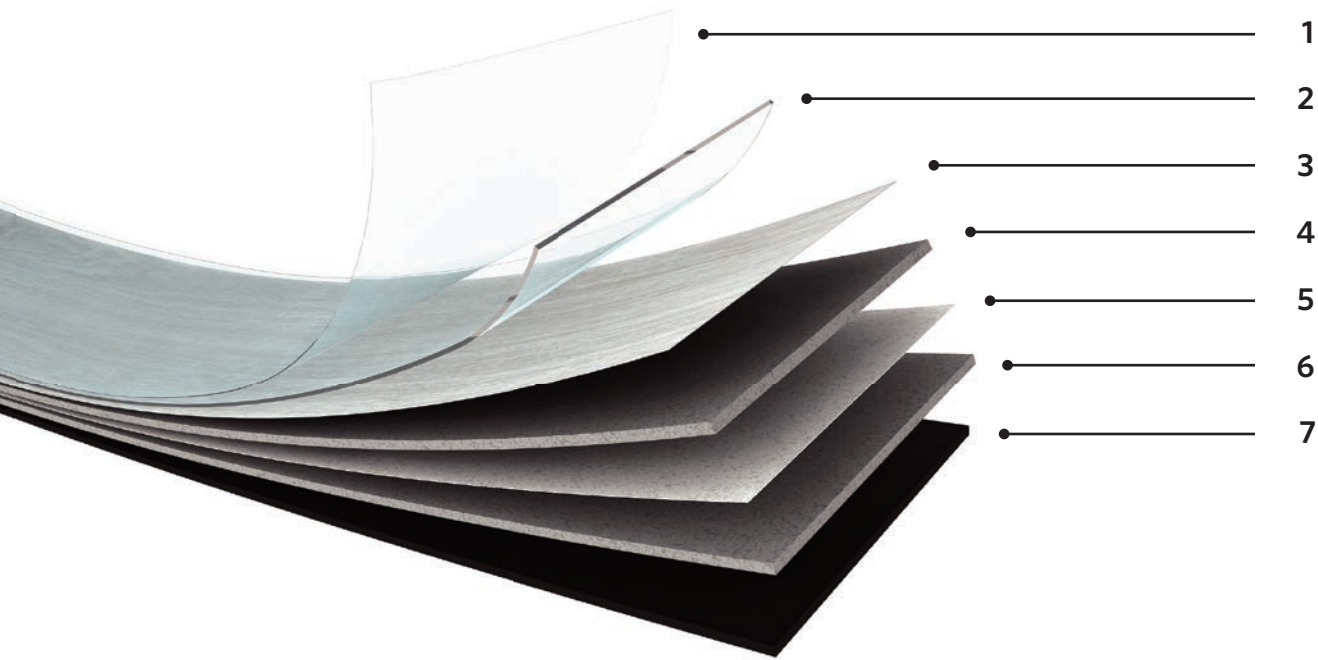
REFLECTIVE
LRF6-203 VISTA



— STYLE WITH **PERFORMANCE**

Built for longevity, Lumenology comes standard with ProGuard MAX™ best-in-class integrated surface technology. While ensuring excellent product performance, Lumenology features superior sound reduction over standard LVT platforms.

FLEXFORM™ LVT CONSTRUCTION



OVERALL
THICKNESS
5mm

WEAR LAYER
THICKNESS
0.55 mm

1. **PROGUARD MAX™ REINFORCED POLYURETHANE COATING**
Integrated surface technology provides best in class scratch & stain resistance, eliminates the need for additional finishes or harsh chemical treatments.
2. **0.55MM TRANSPARENT WEAR LAYER**
Heavy commercial grade 0.55mm transparent wear layer protects the print visuals and ensures product performs in heavy foot traffic.
3. **DESIGN PHOTOGRAPHIC FILM**
State of the art printing technology providing authentic visuals and designs.
4. **HIGH DENSITY CORE**
Ensures excellent durability, stability and long term performance.
5. **GLASS FIBER LAYER**
Supports dimensional stability.
6. **HIGH DENSITY CORE**
Ensures excellent durability, stability and long term performance.
7. **VINYL BACKING LAYER**
Engineered balance layer provides stability and durability of the product.

FLEXFORM™ LVT that works Easier and Smarter



SUSTAINABILITY

In keeping with Milliken's long-standing culture of sustainability, our Luxury Vinyl Tile products are 100% Ortho-Phthalate free. They do not contain problematic post-consumer recycled material. Further, Milliken's Luxury Vinyl Tiles are certified to the most stringent global environmental standards. For further information, visit: millikenfloors.com/sustainability



WARRANTY

Milliken Luxury Vinyl Tile products are backed by a 22 year Limited Commercial warranty, ensuring quality and giving peace of mind.



MODULARITY

Collection is available in plank size of 250 x 1000mm and coordinates with our carpet tiles. Easy transit from LVT to Carpet tile and make your space more creative and inspiring.

It takes humans to protect humanity.

Make changes to end climate change.
Design a better future.

M/PACT™
CARBON NEUTRAL PROGRAM

CLIMATE CHANGE IS ONE OF THE GREATEST THREATS FACING HUMANITY, AND WE ARE ALL RESPONSIBLE.

That's why Milliken Floor Covering launched the **M/PACT™** carbon neutral program. Today, our carpet, LVT and entrance flooring tiles are carbon neutral everywhere in the world.

M/PACT carbon neutral products offset the raw materials and manufacturing carbon footprint* by using 3rd party Verified Carbon Standard Credits that support renewable energy and carbon reduction technologies to help fight climate change. When you choose M/PACT products, you can be sure your choice is carbon neutral.



SCAN TO LEARN MORE ABOUT OUR CARBON NEUTRAL PROGRAM

M/PACT™

M/PACT™

CARBON NEUTRAL PROGRAM

Investment

Today we invest through renewable energy credits, verified carbon offsets, and installing solar power at our Sydney manufacturing facility. We also continue to invest in more efficient manufacturing technologies and in local supply chains.

Materials

We believe material health is essential to enable circularity. The use of materials that don't contain harmful chemicals provides a critical pathway to end-of-life product recycling. Our carpet, LVT and entrance flooring tiles are recyclable.

Dematerialisation

We continue to support the advancement of a circular economy - one that uses less new raw materials and creates less waste. For example, we have created a portfolio of carpet tiles that use less raw material, reducing embodied carbon. We will continue to challenge ourselves and our supply chains to extend innovation in new technologies for dematerialisation.

Manufacturing

We leverage our global manufacturing and local supply chains to minimise carbon emissions. More efficient manufacturing and distribution not only reduces our global carbon footprint, it also has a direct positive impact on the communities we call home.

Wellness

Climate change directly impacts human health and wellness. Pollution. Natural disasters. Droughts. As a founding member of the Well Living Lab and a Well Portfolio Member, we aspire to design products that enhance well-being and quality of life of indoor spaces.

We will continue to do more to lower our carbon footprint.

The M/PACT™ program is long-term, because the fight to stop climate change will be a long one. As a global manufacturing company, we set 2025 goals that align with the United Nations Sustainable Development Goals. We push ourselves to meet our targets on Planet, Product, and People, including a 25% reduction in indexed greenhouse emissions by 2025. These 2025 goals are a benchmark for us to achieve more, faster. We encourage you to specify our carbon neutral products for all of your projects to ensure the climate change journey continues.

Together, we can make a positive **M/PACT™** on the world for generations.

* As calculated and verified scope A1-3 GWP through a ISO14025/ISO14040 compliant LCA and published in third party EPDs.

Milliken



LUMENOLOGY LVT

LIGHT STITCH | LIGHT WASH | REFLECTIVE

5.0MM SPECIFICATION

M/PACT™
CARBON NEUTRAL PROGRAM

When you choose M/PACT™ products, you can be sure your choice is carbon neutral. M/PACT™ carbon neutral products offset the raw materials and manufacturing carbon footprint* by using 3rd party Verified Carbon Standard Credits that support renewable energy and carbon reduction technologies to help fight climate change.

*as calculated and verified through a ISO14025/ISO14040 compliant LCA and published in third party EPD.

Construction	High Performance FLEXFORM™ LVT	Critical Radiant Flux (AS ISO 9239-1)	8.3 kW/m ²
		Smoke Rate (AS ISO 9239-1)	303%.min
Finish	ProGuard MAX™ Reinforced Polyurethane Coating	Use Classification (ISO 10582)	Class 33 Heavy Duty Commercial
Wear Layer Thickness	0.55mm	Slip Resistance Classification	P3 & R10
Tile Size	250mm x 1000mm	Heat Stability of Colour Change (ASTM F1514)	PASS
Overall Thickness	5mm	Light Stability (ASTM F1515)	PASS
Edge Profile	Micro Bevel	Static Coefficient of Friction (ASTM D2047)	PASS
Recyclable	100%	Determination of Dimensional Stability & Curling after Exposure to Heat (ISO 23999)	≤0.25%; Curl ≤2mm
Pieces Per Box	8 pieces	Resistance to Chemicals (ASTM F925)	PASS
Weight Per Box	19.5kg	Residual Indentation (ISO 24343-1)	≤0.1mm
Quantity Per Box	2m ²	Static Load Limit (ASTM F970)	PASS
Environmental	Declare Carbon Neutral GreenRate by Global GreenTag Best Practice PVC by Global GreenTag Environmental Product Declaration (EPD)	Castor Chair Resistance (ISO 4918)	PASS
		Flexibility (ISO 24344)	PASS
		Colour Fastness to Light (ISO 105-B02)	

Recommended Installation Method(s) Ashlar (Vertical) | Herringbone, Ashlar (Random)

Recommended Area of Use Commercial | Residential

Warranties 22-Year Limited Commercial Wear Warranty



Declare.



Alliance
Founding
Member



Milliken

Reflective in Iridescent (LRF6-126) and
Light Stitch in Lambda (LLS199)
Ashlar (Vertical) Installation

Australia:
Toll Free: 1800 668 372

New Zealand:
Toll Free: 0800 668 372

www.millikenfloors.com.au
(Australia & New Zealand)

Milliken Hybrid Flooring System is highly durable resilient flooring engineered with the highest quality raw materials to provide unsurpassed performance and enduring aesthetics.

Milliken Hybrid Flooring System is 100% ortho-phthalate-free.

Milliken Hybrid Flooring System is manufactured at facilities that are ISO 9001 and ISO 14001 compliant.

© 2023 Milliken & Company | Design © Milliken & Company