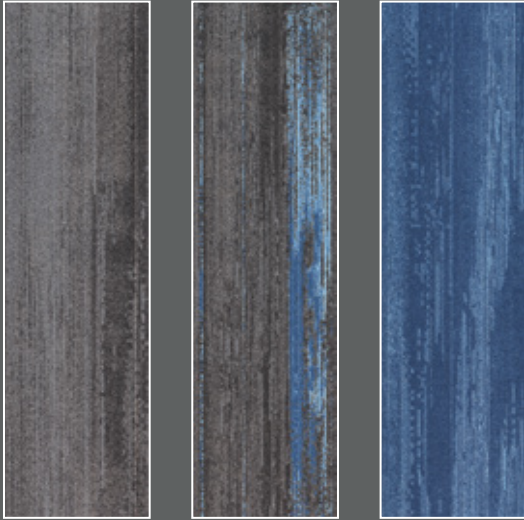


COLOUR COMPOSITIONS



Milliken<sup>™</sup>  
Ontera<sup>™</sup>



## INSPIRED. INSPIRING.

Harmonious and balanced or challenging and unexpected, an exploration of colour and form has begun.

Balancing a relationship of scale, shape, rhythm and pattern, a natural intuition is unlocked and expressed by each individual composition.



**COLOUR COMPOSITIONS**



Abrasion CCM154, Abrasion Hydrolysis CCM154-33 and Hydrolysis CCM33 combination | Herringbone Installation



Abrasion CCM154 and Abrasion Hydrolysis CCM154-33 combination | Herringbone Installation



Abrasion CCM154 | Herringbone Installation



**COLOUR COMPOSITIONS**



Weathering CCM153, Weathering Delta CCM153-19 and Delta CCM19 combination | Ashlar (Vertical) Installation



Weathering CCM153 and Cobble CCM180 combination | Ashlar (Vertical) Installation



Weathering CCM153, Weathering Delta CCM153-19 and Cobble CCM180 combination | Ashlar (Vertical) Installation

COLOUR COMPOSITIONS



Crystalline CCM105 | Herringbone Installation



Micro CCM152, Micro Crystalline CCM152-105 and Crystalline CCM105 combination | Ashlar (Vertical) Installation



# COLOURWAY

## Micro—Crystalline



CCM152 Micro  
CCM152-105 Micro Crystalline  
CCM105 Crystalline

## Tension—Viscosity



CCM48 Tension  
CCM48-128 Tension Viscosity  
CCM128 Viscosity

## Granite—Crust



CCM5 Granite  
CCM5-172 Granite Crust  
CCM172 Crust

## Intrusion—Calcite



CCM6 Intrusion  
CCM6-125 Intrusion Calcite  
CCM125 Calcite

## Erosion—Glacier



CCM13 Erosion  
CCM13-157 Erosion Glacier  
CCM157 Glacier

## Uplift—Garnet



CCM79 Uplift  
CCM79-109 Uplift Garnet  
CCM109 Garnet

## Abrasion—Hydrolysis



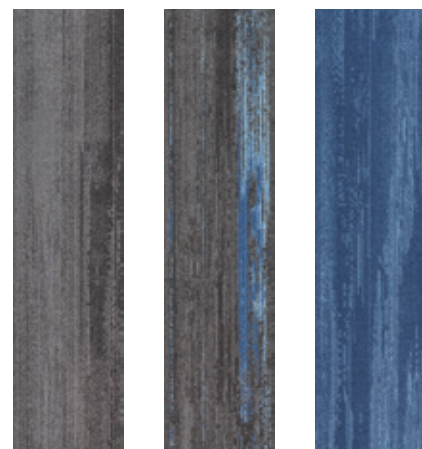
CCM154 Abrasion  
CCM154-33 Abrasion Hydrolysis  
CCM33 Hydrolysis

## Syncline—Eruption



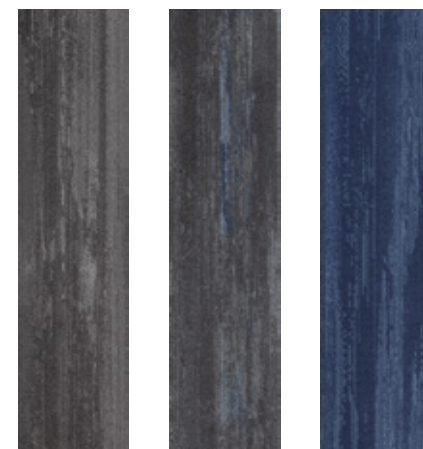
CCM171 Syncline  
CCM171-169 Syncline Eruption  
CCM169 Eruption

## Weathering—Delta



CCM153 Weathering  
CCM153-19 Weathering Delta  
CCM19 Delta

## Sabkha—Marble



CCM174 Sabkha  
CCM174-73 Sabkha Marble  
CCM73 Marble

## Compression—Quartzite



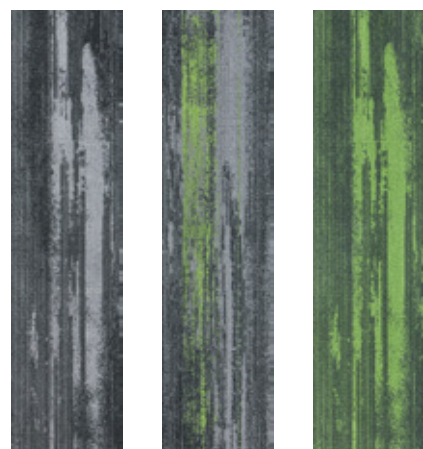
CCM120 Compression  
CCM120-104 Compression Quartzite  
CCM104 Quartzite

## Alkali—Salvation



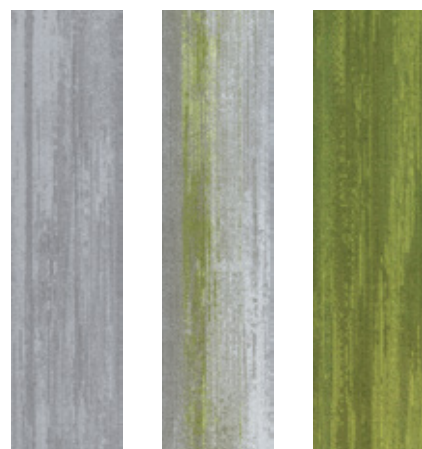
CCM94 Alkali  
CCM94-151 Alkali Salvation  
CCM151 Salvation

## Meander—Estuary



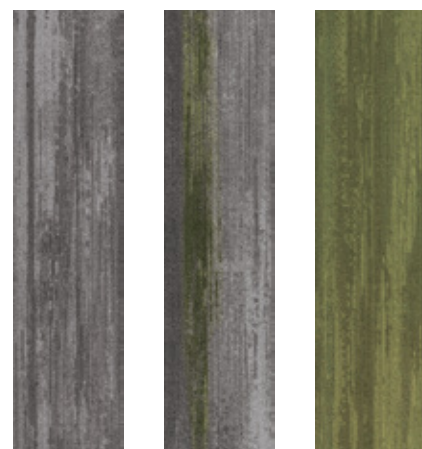
CCM106 Meander  
CCM106-141 Meander Estuary  
CCM141 Estuary

## Cobble—Extrude



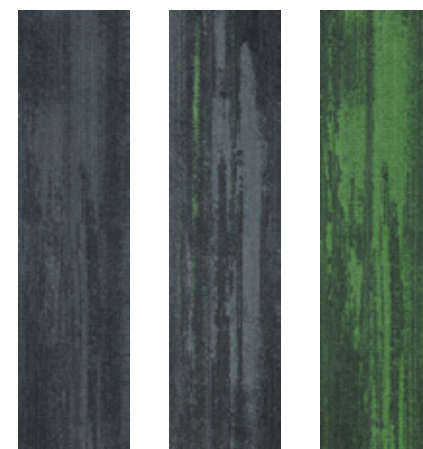
CCM180 Cobble  
CCM180-103 Cobble Extrude  
CCM103 Extrude

## Traction—Mudstone



CCM108 Traction  
CCM108-62 Traction Mudstone  
CCM62 Mudstone

## Pyroxene—Chlorite



CCM118 Pyroxene  
CCM118-162 Pyroxene Chlorite  
CCM162 Chlorite



# COLOUR COMPOSITIONS

## SPECIFICATION

### Construction

Tufted, Textured Loop

### Tile Size

25cm x 1m

### Yarn Type

Milliken Certified Wear-On®  
Nylon Type 6,6

### Stain Repel | Stain Resist | Soil Release

StainSmart®

### Antimicrobial

AlphaSan® AF Built-In Protection

### Dye Method

Millitron® Dye Injection

### Tufts

117.6/in<sup>2</sup> (1,821/100 cm<sup>2</sup>)

### Gauge

1/12

### Stitches Per Inch

9.9

### Standard Backing

WellBAC™ Comfort (PVC-Free)  
(non-reactive cushion backing)

### Recyclable

100%

### Nominal Total Thickness

7.4 mm

### Nominal Total Weight

89 oz/yd<sup>2</sup> (3,024g/m<sup>2</sup>)

### Pile Thickness

3.5mm (Nominal)

### Flammability (Radiant Panel Test)

CRF = 6.1kW/m<sup>2</sup> ; Smoke = 262%.mins

### VOC

Pass (ISO 10580:2010)

### ACCS Grading

Commercial Extra Heavy Duty and Stairs  
(CEHD(S) 4\*  
Residential Extra Heavy Duty & Stairs  
REHD2(S)6\*

### ECS Grading

Level 4 (Certificate No. 18002)

### Environmental

Declare - 3<sup>rd</sup> Party Verified RED LIST FREE

### Acoustic Rating

NRC ≥ 0.25 (exceeds standard acoustic requirements of the Carpet Institute)  
Ln,w ≤ 47dB (Well below the BCA limit of 62dB)

### Recommended Maintenance

Refer to the Milliken-Ontera Care & Maintenance guide Millicare® Care Plan available in some regions.

### Exclusive: Site-Related Solutions (SRS)

Milliken-Ontera Cushion backed tile + Non-Reactive Standard adhesive means install 60 days after new concrete pour, fully warranted no testing required, refer millikenontera.com.au

### Applicable Warranties

15-Year Wear Warranty  
15-Year Dimensional Stability Warranty  
15-Anti-Static Warranty  
15-Year Castor Chair Wear Warranty

### Installation Method(s)



Ashlar (Vertical)



Herringbone



Alliance  
Founding  
Member



Declare.



### Australia

Toll Free: 1800 668 372

### New Zealand

Toll Free: 0800 668 372

This WellBAC™ cushion-back tile product is covered by one or more patents, published applications and | or patents pending. Specification are subject to normal manufacturing tolerances and may be subject to change without prior notice. Copies of actual test results are available upon request.



Growing greener for over 100 years.  
Visit [milliken.com](http://milliken.com) for more information.