

# ARCTIC SURVEY

Expedition / Isotherm / Shackleton



Expedition



Isotherm



Shackleton



PRICE

Milliken™





## INSPIRED.

Ice is ever changing. Layers form over centuries from the seasons' ebb and flow. Exploring this frigid environment requires the heart of an explorer and its constant yearning for discovery. The Arctic offers a place of solitude and a counterbalance to an idea of natural beauty.



Shackleton in Glacial, vertical ashlar plank installation



Get more at [millikenfloors.com](http://millikenfloors.com)







Expedition in Glacial, vertical ashlar plank installation





Isotherm in Glacial, vertical ashlar plank installation





Isotherm in Avalanche with Eero LVT in EER108-215-209, vertical ashlar plank installation





(left to right) Expedition, Shackleton, and Isotherm in Avalanche



## INSPIRING.

The Arctic Survey collection offers a series of bold textures inspired by the movement, structures, and evolving forms of ice in the Arctic. Three patterns vary in movement and scale, formed by varying depths of an all loop, solution dyed construction. The result is a new and elegant visual landscape for the floor.

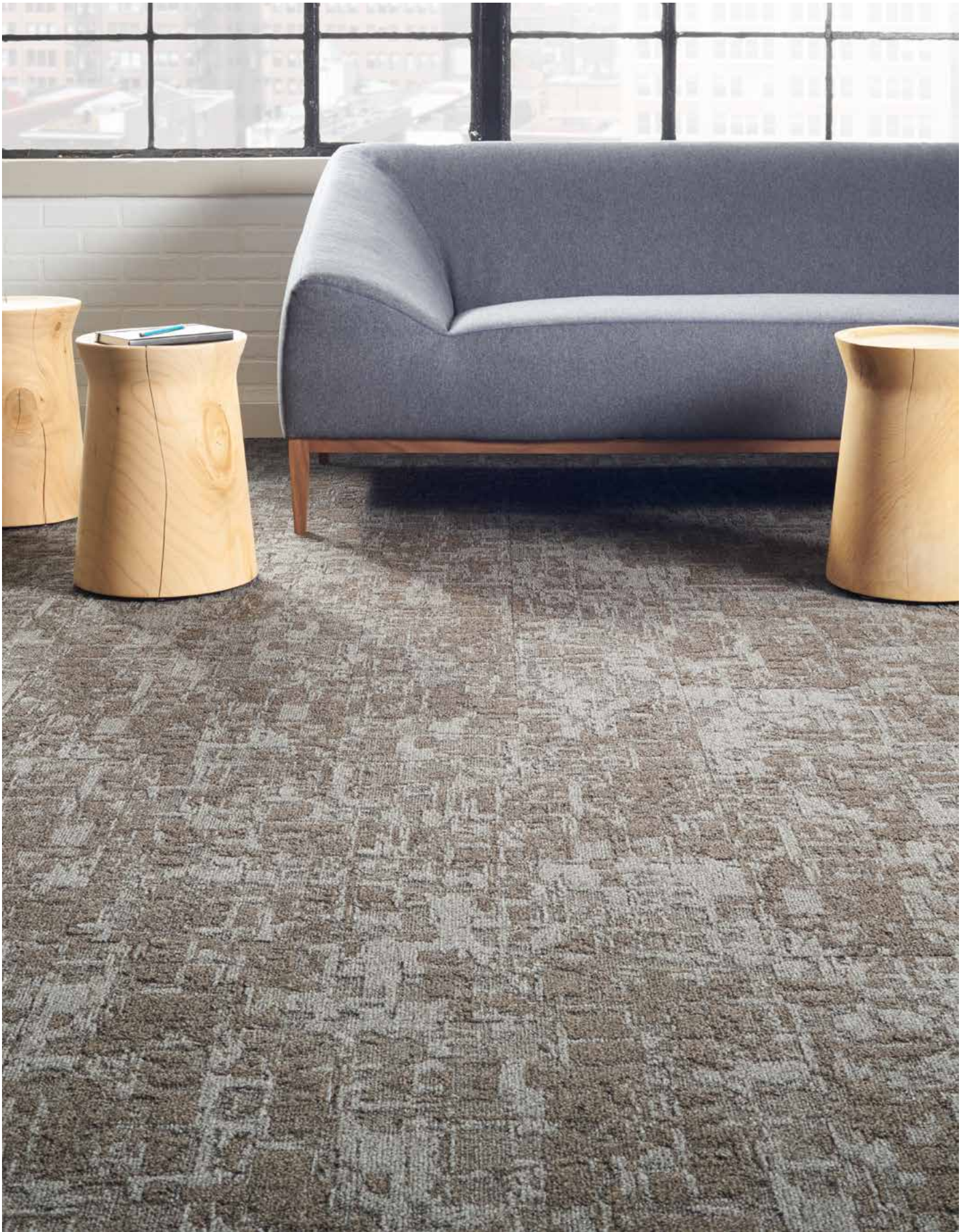
*(alternating bands) Shackleton and Isotherm in Black Ice, vertical ashlar plank installation*



Get more at [millikenfloors.com](http://millikenfloors.com)







Expedition in Permafrost, vertical ashlar plank installation

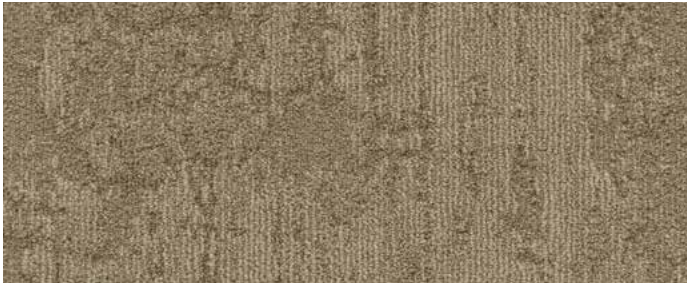




Shackleton in Sedges with Heritage Wood LVT in HER208, vertical ashlar plank installation



Colorline Shown in **Isotherm**



IST15-121 **MIGRATE** (Expedition EXP15-121, Shackleton SHK15-121)



IST48-122 **SLEET** (Expedition EXP48-122, Shackleton SHK48-122)



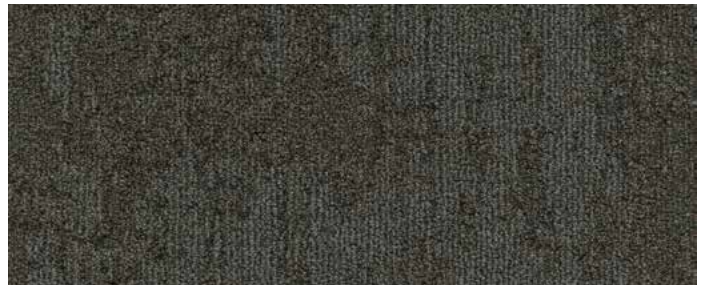
IST124-94 **HIBERNATE** (Expedition EXP124-94, Shackleton SHK124-94)



IST122-120 **THAW** (Expedition EXP122-120, Shackleton SHK122-120)



IST93-178 **TUNDRA** (Expedition EXP93-178, Shackleton SHK93-178)



IST67-59 **PERMAFROST** (Expedition EXP67-59, Shackleton SHK67-59)



IST204-171 **FROSTBITE** (Expedition EXP204-171, Shackleton SHK204-171)



IST108-122 **ICE CAP** (Expedition EXP108-122, Shackleton SHK108-122)

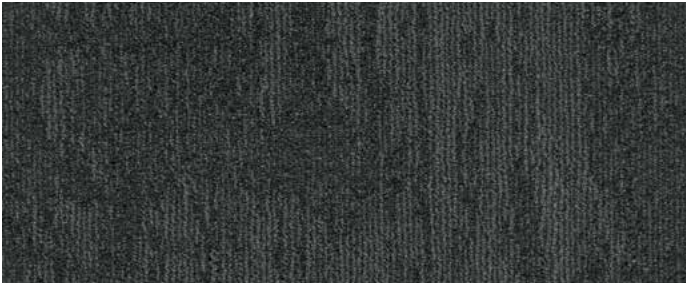


IST108-13 **AVALANCHE** (Expedition EXP108-13, Shackleton SHK108-13)



IST171-25 **GREAT MELT** (Expedition EXP171-25, Shackleton SHK171-25)





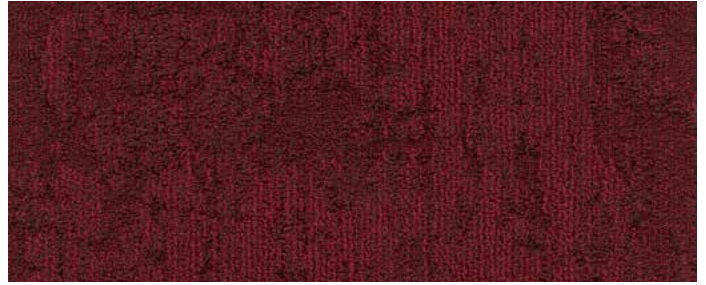
IST174-119 SUB ZERO (Expedition EXP174-119, Shackleton SHK174-119)



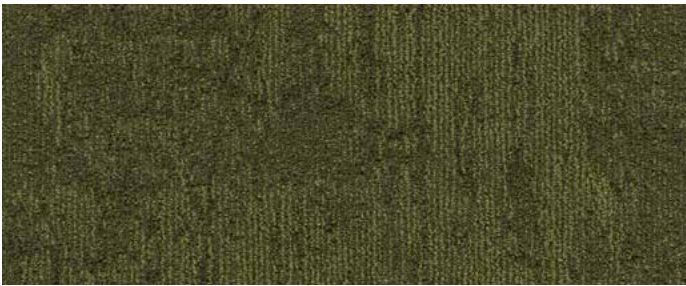
IST119-27 BLACK ICE (Expedition EXP119-27, Shackleton SHK119-27)



IST111-134 MIDNIGHT SUN (Expedition EXP111-134, Shackleton SHK111-134)



IST109-60 FIRESIDE (Expedition EXP109-60, Shackleton SHK109-60)



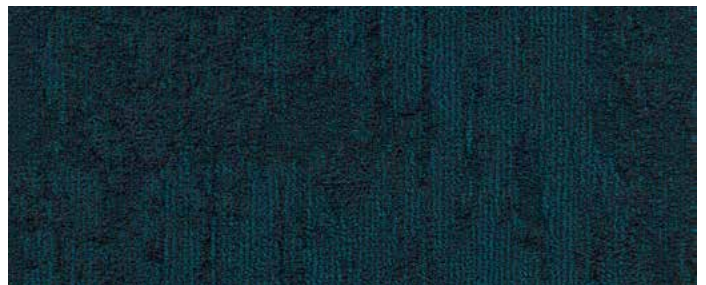
IST45-28 SEDGES (Expedition EXP45-28, Shackleton SHK45-28)



IST203-230 EVERGREEN (Expedition EXP203-230, Shackleton SHK203-230)



IST52-107 POLAR NIGHT (Expedition EXP52-107, Shackleton SHK52-107)



IST229-107 SEA ICE (Expedition EXP229-107, Shackleton SHK229-107)



IST52-126 GLACIAL (Expedition EXP52-126, Shackleton SHK52-126)

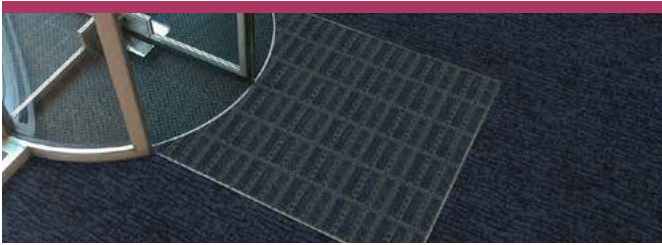


# Complete Flooring Solutions



Milliken Floor Covering offers products and expertise in all areas of your commercial spaces, including high-performance entryway systems, broadloom & modular carpet, luxury vinyl tile, and milliCare®. Simplify your flooring needs with a trusted partner that will let you enjoy creating a great space without having to worry about everything else.

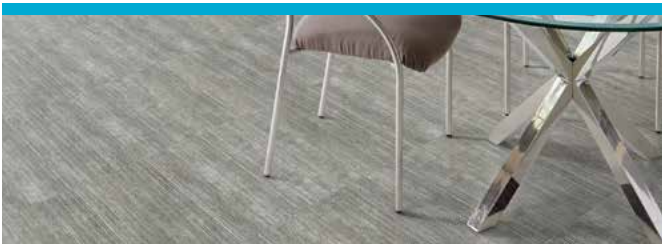




## Entry Systems

The OBEX® brand of products offers highly effective, comprehensive modular entry solutions designed as a three-zone barrier system to prevent dirt and moisture from entering the building.

Available in coordinated colors and patterns, OBEX® entry products are engineered to increase the functionality of a building's entrance without forsaking elements of design or aesthetic. Simple and easy to work with, OBEX® offers entry systems that can be recessed or surface-mounted as well as exterior and interior applications.



## Luxury Vinyl Tile

From natural looks of wood and stone to more modern textures and abstracts, Milliken's collection of Luxury Vinyl Tile flooring creates new options for a commercial or hospitality interior. Our simple-to-search Color Reference system provides easy coordination of the LVT options to modular and broadloom carpets. From carpet tile to broadloom to planks to LVT, Milliken provides durable and elegant options for your project.



## Broadloom & Modular Carpet

Milliken's broadloom and carpet tile incorporate the latest innovations in tufting and dyeing technology, achieving unique looks and excellent performance. With our Color Reference system, coordinating multiple products across a single project is a snap; whether it's carpet, LVT, or entry systems. All carpet tile products have cushion backing for an extended lifespan, as well as ergonomic and environmental benefits. Broadloom carpet also has cushion-back options, and all are standard with StainSmart®, a proprietary treatment applied to Milliken carpets to repel and protect against stains and enhance soil release.



## milliCare®

We care for the environment with products and a method that improve Indoor Air Quality and reduce water consumption and your carbon footprint. We care about you professionally by saving you time through customized service plans for your entire space provided for by our franchise network. You work healthier and live healthier, and the planet is a better place because of it. We can bring that same quality of care and service to you wherever you are. milliCare takes caring for your flooring and textiles off your to-do list, which means that you get to skip right to the part where you get to lean back, put your hands behind your head, and be a hero for keeping a beautifully cleaned space.



# ARCTIC SURVEY

## Expedition / Isotherm / Shackleton

Images in this brochure are approximate for color and pattern scale. Please use actual carpet samples to make your final selections.

Have you seen our other collections? Visit us online today.



Archipelago



Lineation



Surface Study



Whale Song



### Construction

Tufted, Multi-Level Loop

### Tile Size

25 cm x 1 m (9.85" x 39.4")

### Yarn Type

Universal® Fibers Solution-Dyed  
Nylon Type 6,6

### Stain Repel & Resist / Soil Release

StainSmart®

### Tufted Face Weight

Expedition: 26 oz/yd<sup>2</sup> (882 g/m<sup>2</sup>)

Isotherm, Shackleton:

30 oz/yd<sup>2</sup> (1,017 g/m<sup>2</sup>)

### Finished Pile Height

Expedition: 0.19" (4.83 mm)

Isotherm: 0.21" (5.33 mm)

Shackleton: 0.22" (5.59 mm)

### Finished Pile Thickness

Expedition: 0.14" (3.56 mm)

Isotherm: 0.15" (3.81 mm)

Shackleton: 0.16" (4.06 mm)

### Average Density

Expedition: 6,030

Isotherm: 5,781

Shackleton: 5,512

### Standard Backing

PVC-Free Underscore™ ES Cushion

Underscore™ is available with TractionBack®

### Texture Appearance Retention Rating (TARR)

Severe

### Recommended Installation Method



PLANKS

### TractionBack®

Simplify your modular installation with Milliken's patented TractionBack®, an innovative backing system that is faster, more cost efficient, and environmentally superior to wet adhesives and peel-and-stick carpet tile.



This cushion-back carpet tile product is covered by one or more patents, published applications and/or patents pending. Specifications are subject to normal manufacturing tolerances and may be changed without prior notice.

### Growing greener for over 100 years.

This product has a UL® Environment 3<sup>rd</sup> party verified Environmental Product Declaration (EPD). A copy of the EPD is available online at [milliken地毯.com/epd](http://milliken地毯.com/epd) and [productguide.ulenvironment.com](http://productguide.ulenvironment.com).

Customer Concierge 800.824.2246 | [millikenfloors.com](http://millikenfloors.com)  
© 2016 Milliken & Company | Design © Milliken & Company | Made in the USA

Cover image: *Nature and landscapes of Greenland*, by Denis Burdin. © 2016 Shutterstock

2710026886  
CP 0616